



# Forest Resources Division Central Office

July 6, 2015

**Bill O'Neill**  
Chief/State Forester  
State Bureau Administrator 18

**Kimberley Korbecki**  
Executive Secretary 11

**Debbie Begalle**  
Assistant Chief  
State Div Admin 17

**Dennis Nezich**  
Field Coordinator  
State Admin Mgr 15

**Program Services**  
**Lou Ann Fedewa**  
Section Manager  
State Admin Mgr 15

**Kathy McGonagle**  
Secretary 9

**Kim St.Onge**  
Dept Analyst 12

**Deborah Stolecki**  
Dept Analyst 12

**Employee Services**  
**Cheryl Farhat**  
Dept Mgr 14

**Beth Clute**  
Promotional Agent 11

**Fran Ryan**  
Dept Analyst 12

**Kelly Snyder**  
General Office Asst 8

**Accounting/Federal Grants/  
Equipment and Facilities**  
**Jennifer Houle**  
Account Manager 14

**Sheli Davis**  
Account Tech 10

**Sharon Conley**  
Dept Analyst 12

**Lisa Parker**  
Accounting Specialist 13

**Resource Assessment**  
**David Forstat**  
Section Manager  
State Admin Mgr 15

**Kathy McGonagle**  
Secretary 9

**Sherm Hollander**  
Resource Spec 13

**Lisa Dygert**  
Res. Spec 13

**Jeff Schmidt**  
Res. Analyst 12

**Peter Gamberg**  
Res. Analyst 11

**Henry Reed**  
Drafting Tech 11

**Adrien Nicolas**  
Drafting Tech 11

**Roscommon OSC**  
**Matt Tonello**  
Res. Analyst 12

**Forest Resources  
GIS Support Unit**  
**Brian Maki**  
Nat Res Mgr 14

**Megan LeMarbe**  
Res. Analyst 12

**Nicholas Dohm**  
Res. Analyst 12

**Kim Kennedy**  
Res. Analyst 12

**Michael Rubley**  
Res. Analyst 11

**Nathan Poley**  
Res. Analyst 9

**Resource Protection &  
Cooperative Programs**  
**Paul Kollmeyer**  
Section Manager  
State Admin Mgr 15

**Kelly Robbins**  
Secretary 9

**Forest Health, Stewardship  
& Urban Forestry**  
**Ron Murray**  
Nat Res Mgr 14

**Kevin Sayers**  
Forest Mgt Spec 13

**Mike Smalligan**  
Forest Mgt Spec 13

**Brighton Tree  
Improvement Center**  
**Roger Mech**  
Forest Mgt Spec 13

**Gaylord OSC**  
**Scott Lint**  
Forest Tech 11

**Marquette OSC**  
**Bob Heyd**  
Forest Mgt Spc 13

**Private Lands and  
Commercial Forestry**  
**Shirley Businski**  
Dept Specialist 13

**Rose Lake FO**  
**Mike Hanley**  
Forester 12

**Grawn Field Office**  
**Ada Takacs**  
Dept Spec 13

**Roscommon**  
**Bill Green**  
Aviation Mgr 13

**Kevin Jacobs**  
Aircraft Pilot 12

**Newberry OSC**  
**Dean Minett**  
Aircraft Pilot 12

**Escanaba OSC**  
**Gordon Zuehlke**  
Aircraft Pilot 12

**Baraga OSC**  
**Neil Harri**  
Aircraft Pilot 12

**Resource Protection**  
**Don Johnson**  
Forest Mgt Spec 13

**Jack Schultz**  
Heavy Equip Mech 11

**Danny Laux**  
Forest Mgt Spec 13

**Forest Fire Experiment  
Station - Roscommon**  
**Daniel Munn**  
Engineer Mgr Lic. 14

**Lynne Carter-Reiger**  
Secretary 9

**Mike Pickler**  
Heavy Equip Mech 10

**Kevin Jaskowski**  
Engineering Spc 13

**Todd Keckstein**  
Machinist 10

**Don Pillow**  
Drafting Tech 11

**Gerald LeRay**  
Welder 10

**Forest Planning and  
Operations**  
*David Price, Acting*  
Section Manager  
State Admin Mgr 15

**Margaret Spagnuolo**  
Secretary 9

**Forest Operations**  
**Donovan Asselin**  
Forester 11

**Doug Heym**  
Forest Mgt Spec 13

**David Neumann**  
Forest Mgt Spec 13

**Matt Fry**  
Forest Land Use Spec  
Resource Spec 13

*Vacant*  
*Forest Mgt Spec 13*

**Forest Planning &  
Inventory**  
**David Price**  
Nat Res Mgr 14

**Amy Clark Eagle**  
Resource Spec 13

**Scott Jones**  
Resource Spec 13

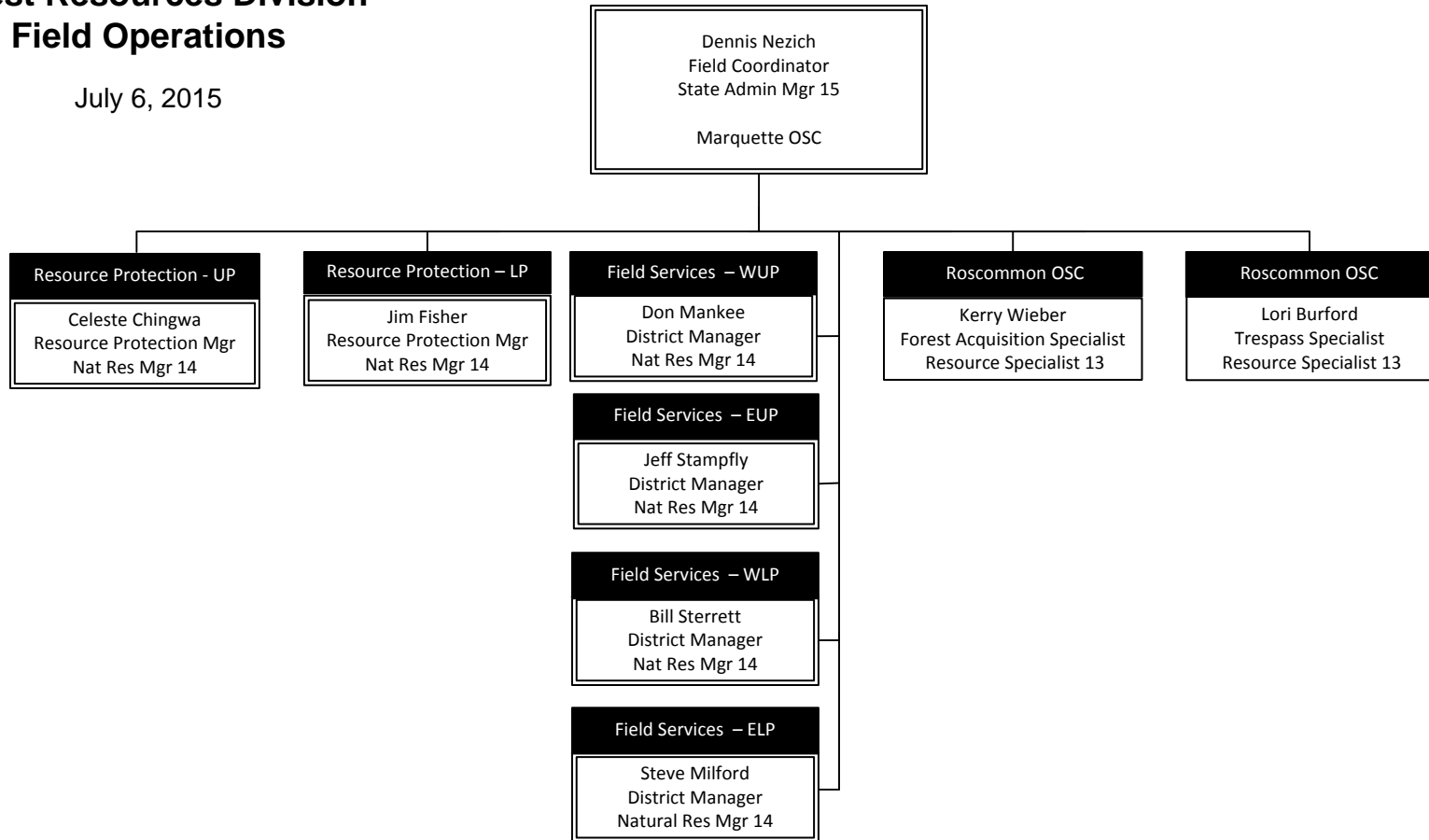
**Gaylord OSC**  
**Jason Stephens**  
Forest Mgt Spc 13

**Newberry OSC**  
**Brenda Owen**  
Forester 12



# Forest Resources Division Field Operations

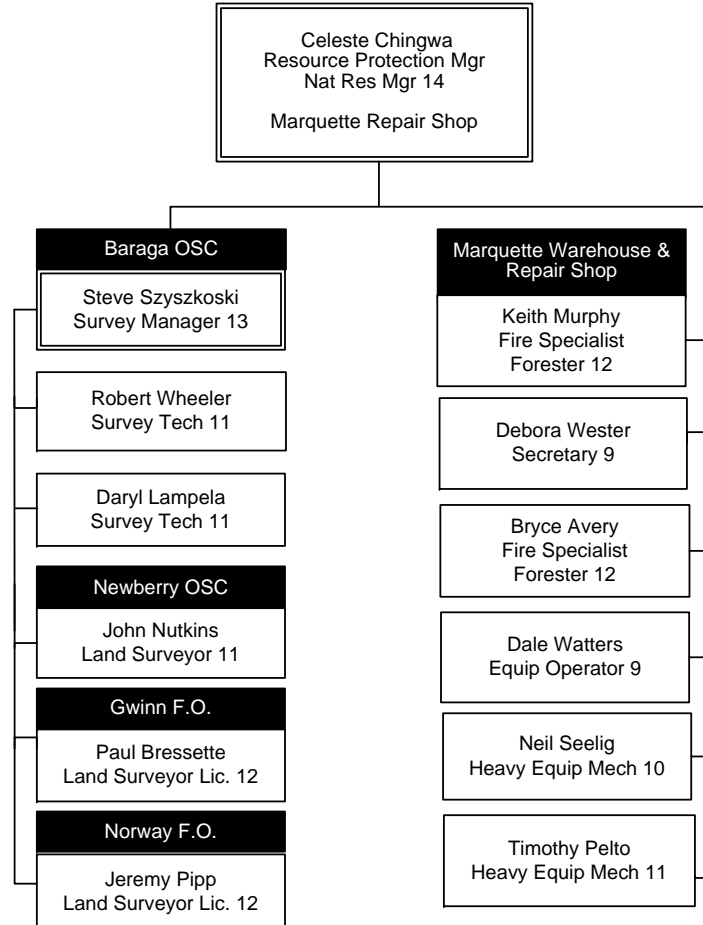
July 6, 2015





# Forest Resources Division Resource Protection Upper Peninsula

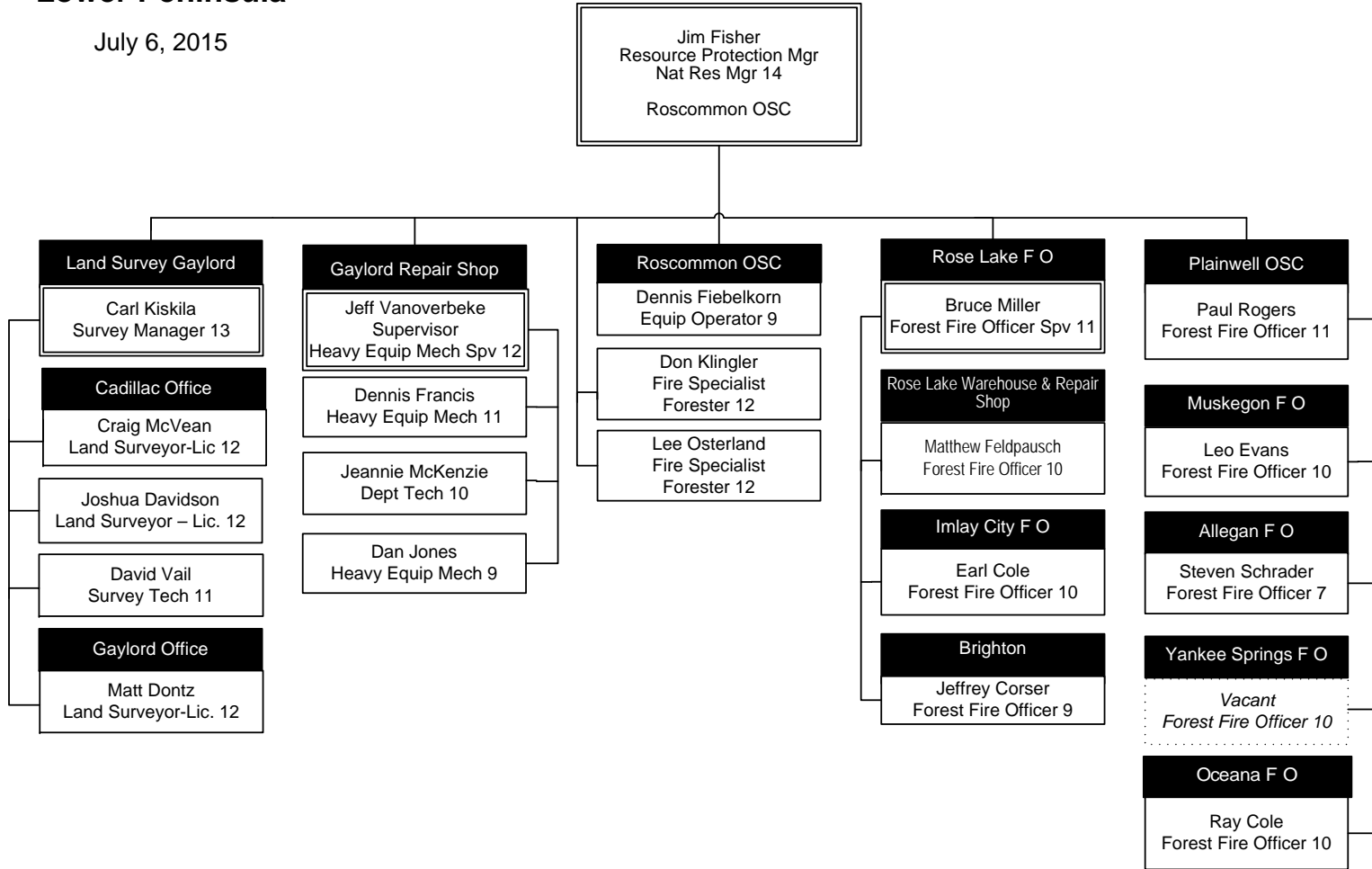
July 6, 2015





# Forest Resources Division Resource Protection Lower Peninsula

July 6, 2015





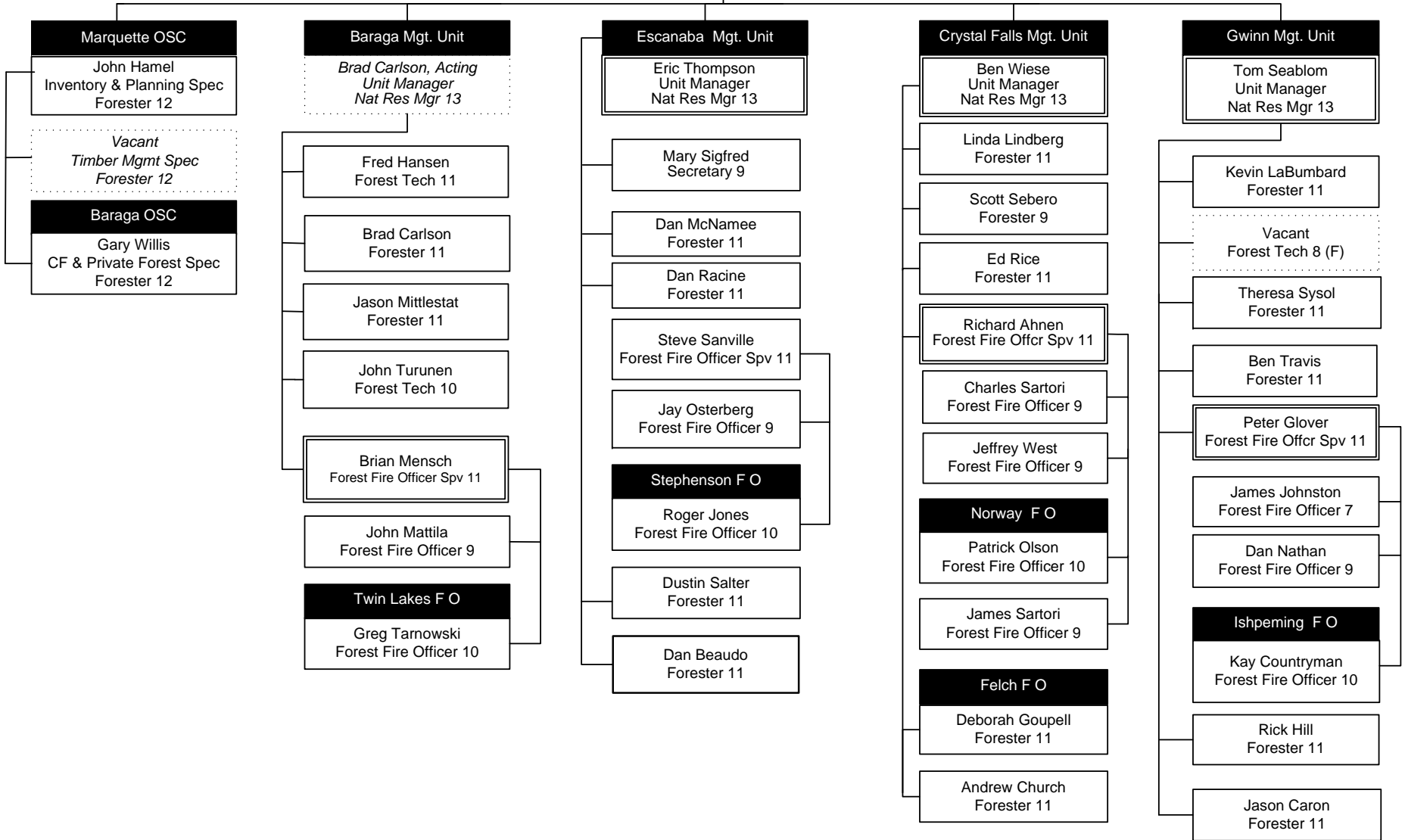
# Forest Resources Division

## Field Services

### Western Upper Peninsula

July 6, 2015

Don Mankee  
WUP District Manager  
Nat Res Mgr 14  
  
Marquette OSC

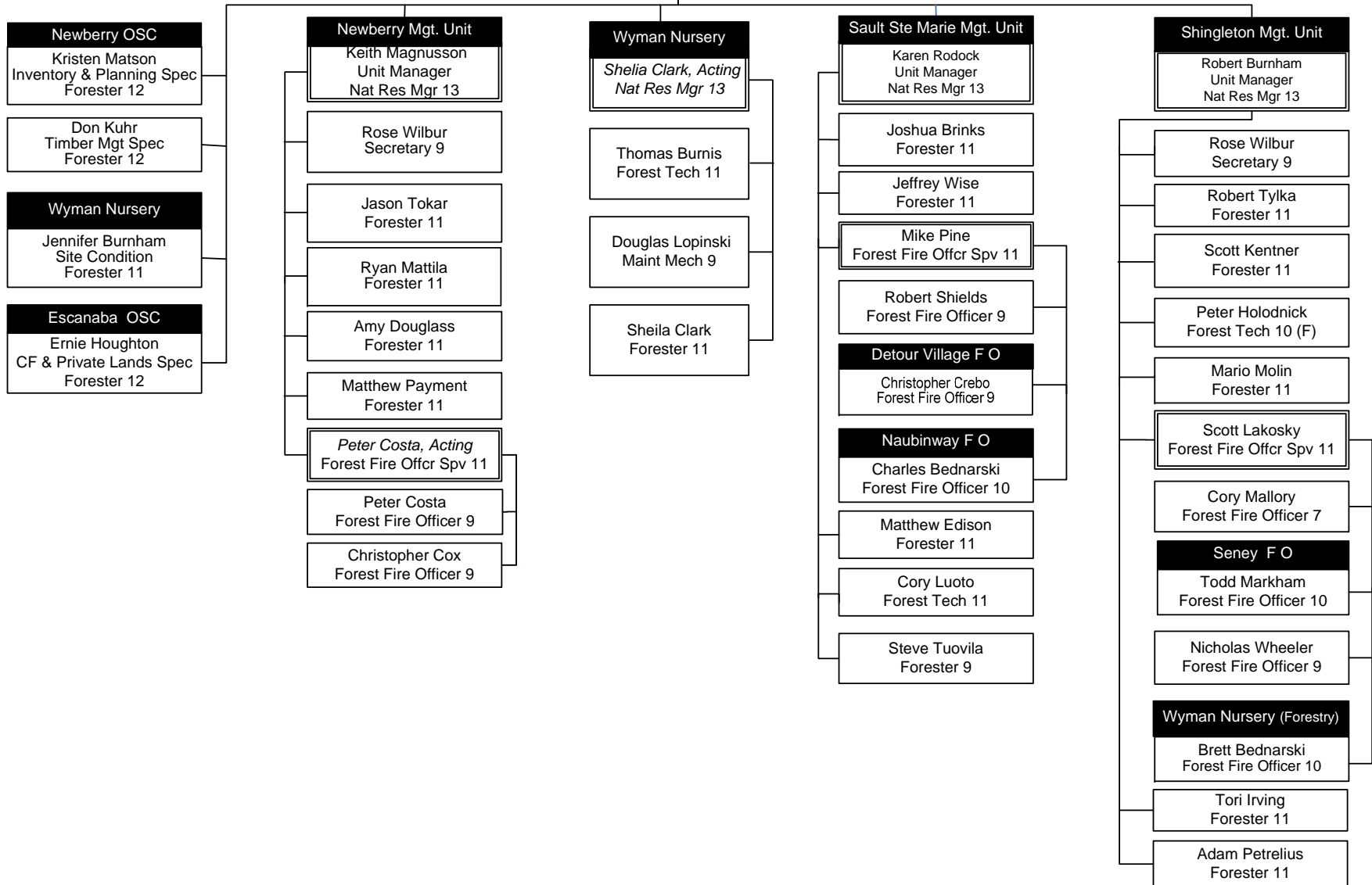




# Forest Resources Division Field Services Eastern Upper Peninsula

July 6, 2015

Jeff Stampfly  
EUP District Manager  
Nat Res Mgr 14  
  
Newberry OSC

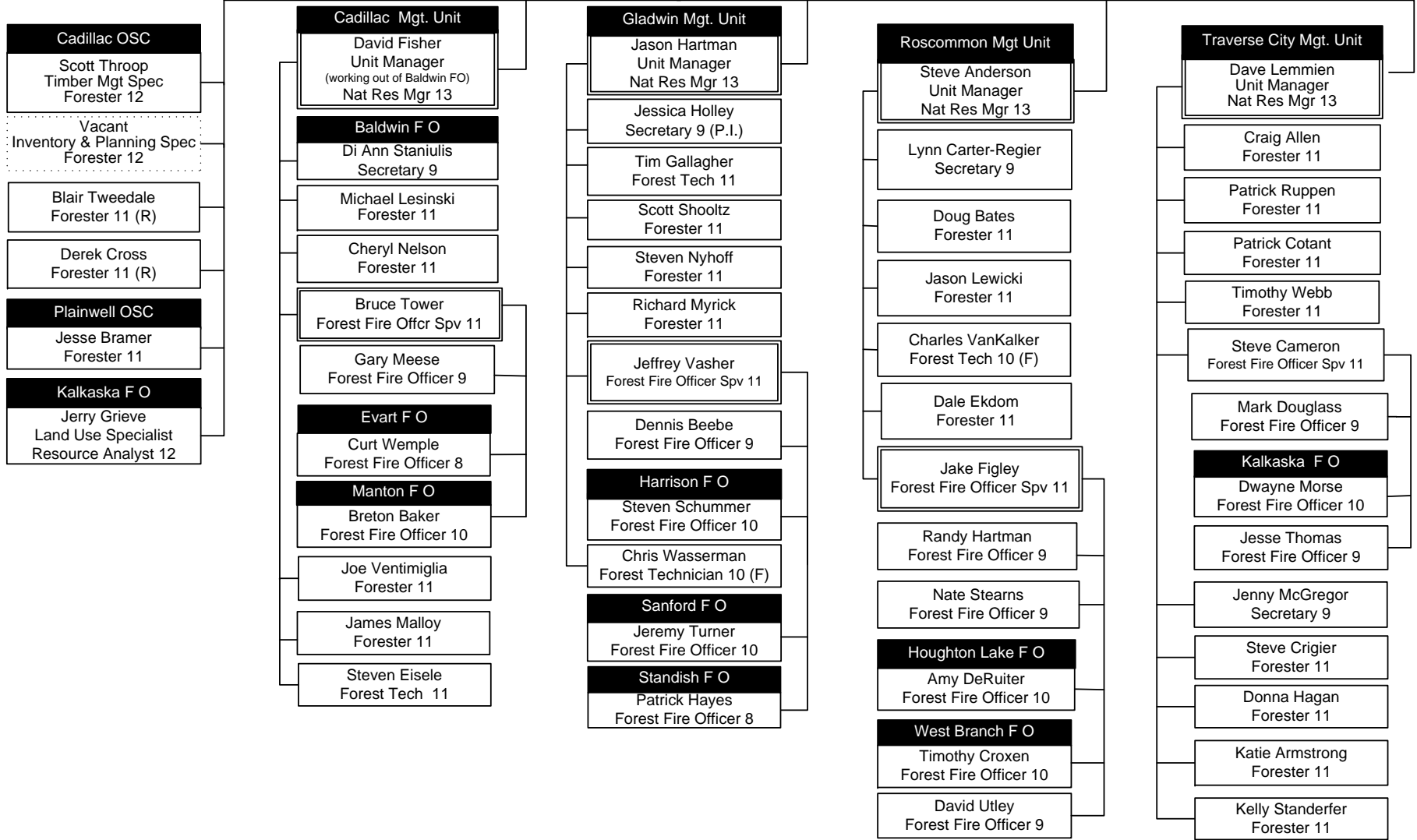




# Forest Resources Division Field Services Western Lower Peninsula

July 6, 2015

Bill Sterrett  
WLP District Supervisor  
Nat Res Mgr 14  
Cadillac OSC





# Forest Resources Division Field Services Eastern Lower Peninsula

July 6, 2015

Steve Milford  
ELP District Manager  
Natural Resources Mgr 14  
Gaylord OSC

