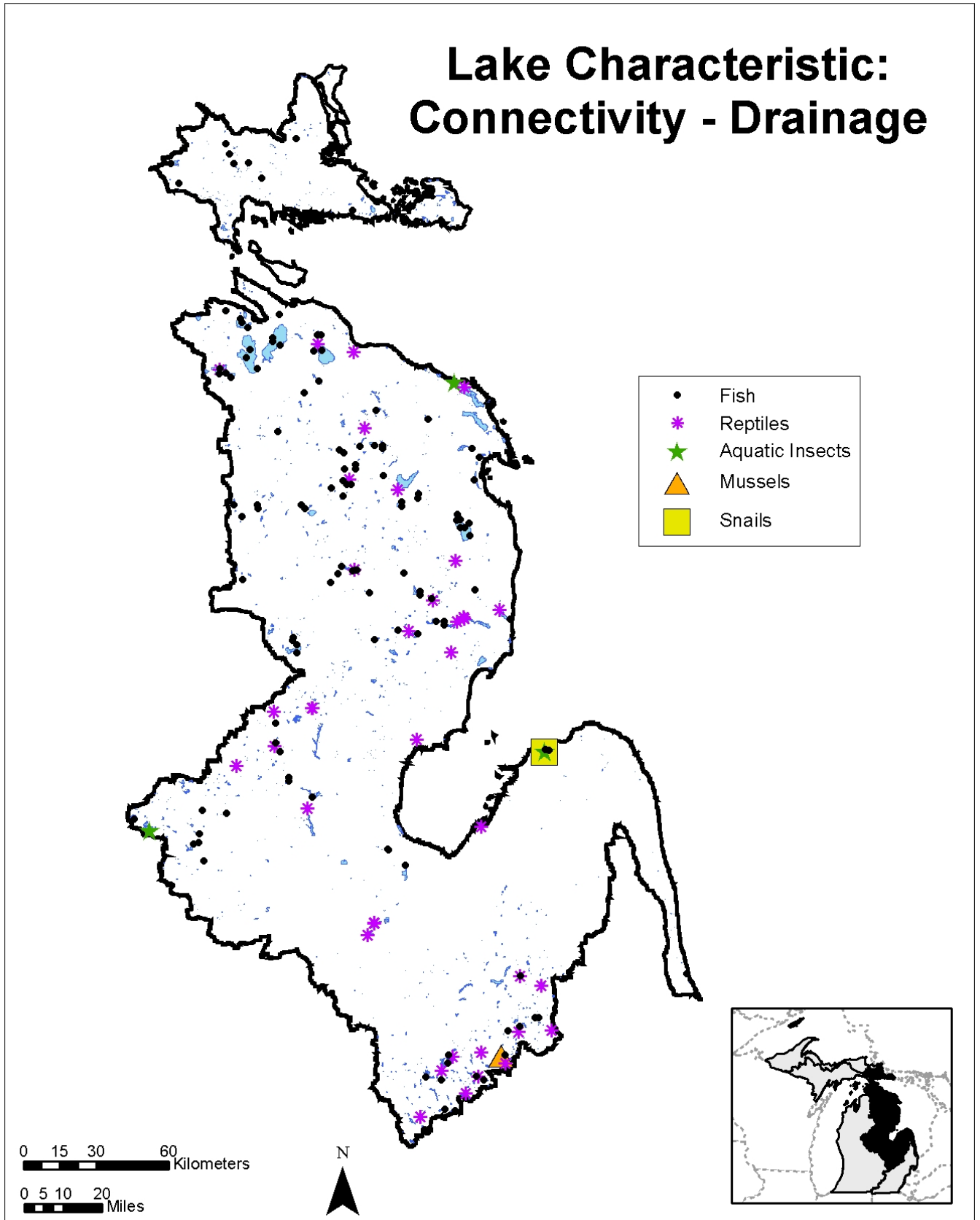


Lake Characteristic: Connectivity - Drainage



Lake Characteristic: Connectivity – Drainage

Description

Drainage lakes have permanent or temporary stream connections, which allow for the movement of aquatic species. These lakes are more likely to have high buffering capacity (and so higher alkalinity) relative to seepage lakes.

General Condition of Feature

No data available.

Associated Species of Greatest Conservation Need

In the literature examined for species habitat information, drainage lakes were not mentioned.

Associated Threats

- No data available

Conservation Actions Needed (Threats addressed)

- No data available

Research and Survey Needs

- Determine additional monitoring needs
- Determine number and condition of lakes with drainage in the basin
- Determine SGCN use of drainage lakes
- Determine threats to this landscape feature

Monitoring

- Dam construction
- Dredging and channelization
- Land use changes