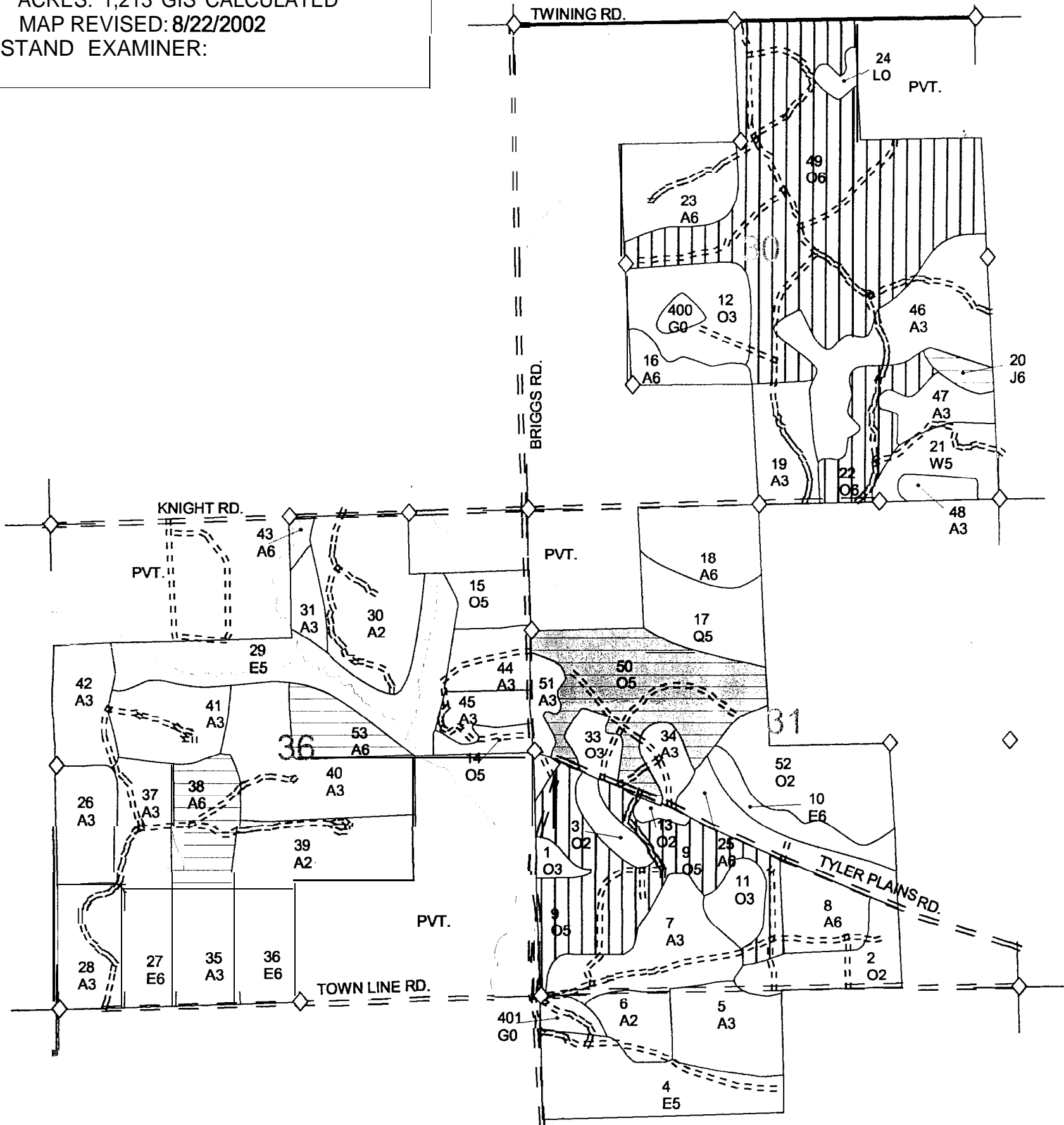


COMPARTMENT 133
 T19N, R5E, SEC. 6
 T20N, R4E, SEC. 36
 T20N, R5E, SEC. 30, 31
 COUNTY: ARENAC
 UNIT: GLADWIN
 FOREST: AU SABLE
 YOE: 2004
 ACRES: 1,213 GIS CALCULATED
 MAP REVISED: 8/22/2002
 STAND EXAMINER:



LEGEND

- ◊ RLS CORNER
- ◊ MIRIS CORNER
- PAVED ROADS
- - - GRAVEL & GOOD DIRT ROADS
- · - · - POOR DIRT ROADS
- ~ RIVERS
- · - · - INTERMITTENT STREAMS
- ▭ STAND BOUNDARY
- ▭ FINAL HARVEST
- ▭ THINNING
- ▭ BURNING



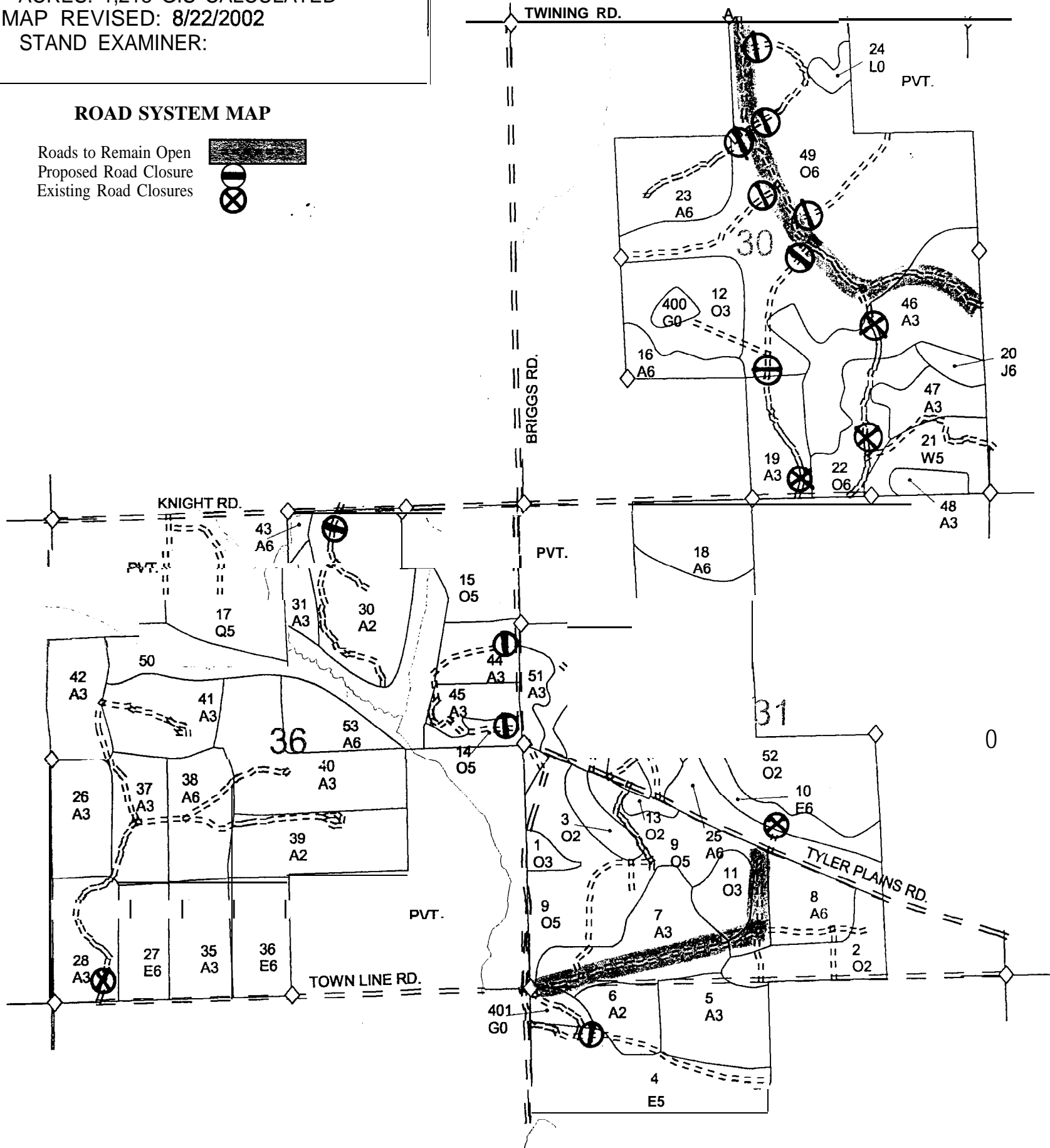
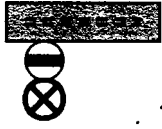
6



COMPARTMENT 133
 T19N, R5E, SEC. 6
 T20N, R4E, SEC. 36
 T20N, R5E, SEC. 30, 31
 COUNTY: ARENAC
 UNIT: GLADWIN
 FOREST: AU SABLE
 YOE: 2004
 ACRES: 1,213 GIS CALCULATED
 MAP REVISED: 8/22/2002
 STAND EXAMINER:

ROAD SYSTEM MAP

Roads to Remain Open
 Proposed Road Closure
 Existing Road Closures



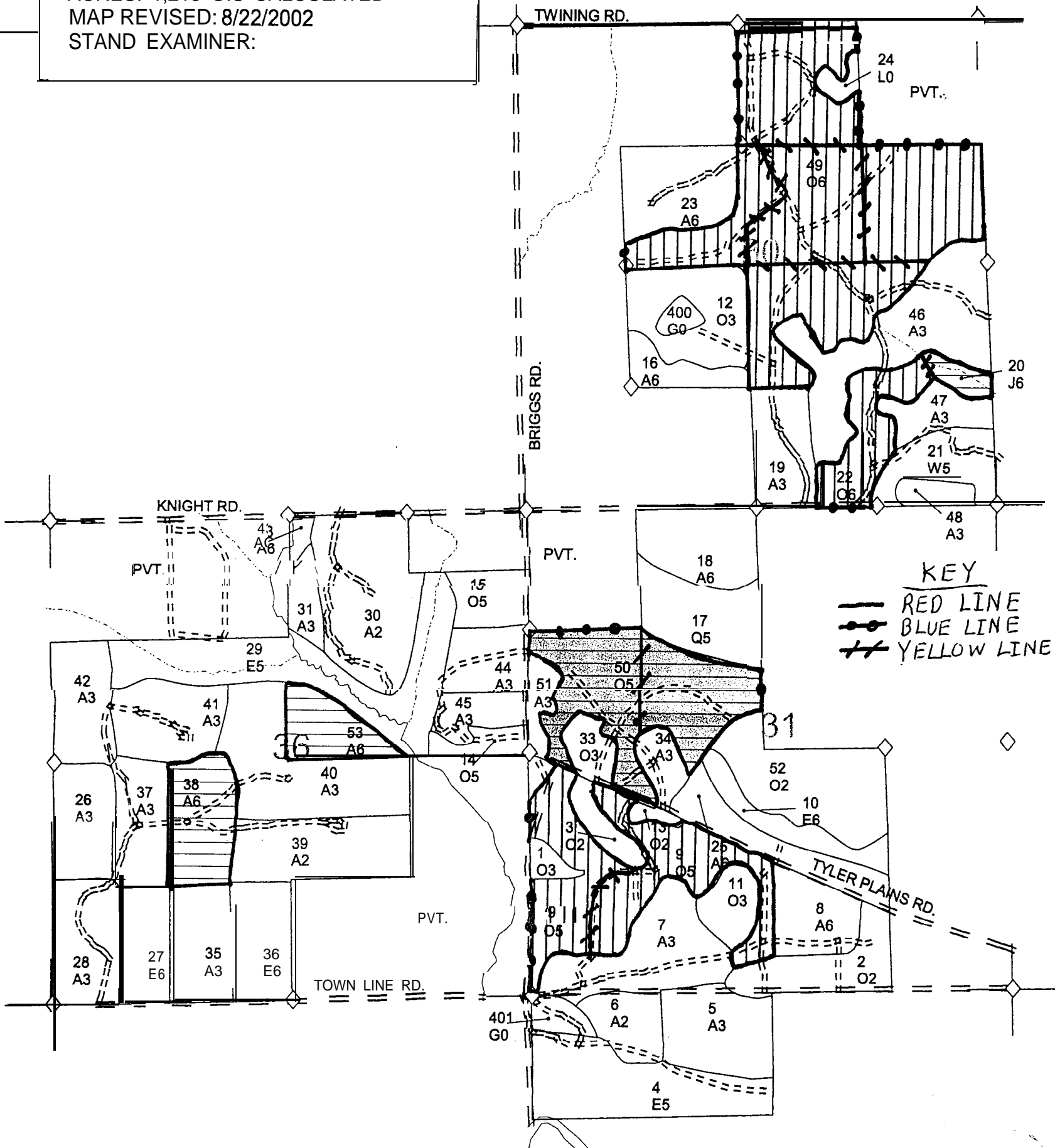
LEGEND

- ◇ RLS CORNER
- ▲ MIRIS CORNER
- ▬ PAVED ROADS
- ▨ GRAVEL & GOOD DIRT ROADS
- ▧ POOR DIRT ROADS
- ▩ RIVERS
- ▭ INTERMITTENT STREAMS
- STAND BOUNDARY



COMPARTMENT 133
 T19N, R5E, SEC. 6
 T20N, R4E, SEC. 36
 T20N, R5E, SEC. 30, 31
 COUNTY: ARENAC
 UNIT: GLADWIN
 FOREST: AU SABLE
 YOE: 2004
 ACRES: 1,213 GIS CALCULATED
 MAP REVISED: 8/22/2002
 STAND EXAMINER:

Final Version



KEY
 — RED LINE
 —●— BLUE LINE
 —+— YELLOW LINE

LEGEND

- ◇ RLS CORNER
- ▲ MIRISCORNER
- ▬ PAVED ROADS
- ▨ GRAVEL & GOOD DIRT ROADS
- ▧ POOR DIRT ROADS
- ▩ RIVERS
- ▭ INTERMITTENT STREAMS
- ▭ STAND BOUNDARY
- ▭ FINAL HARVEST
- ▭ THINNING
- ▭ BURNING

