

DNR

TIMBER SALE MAP

This information provided under authority of Part 525, Act 451 of 1994, as amended.

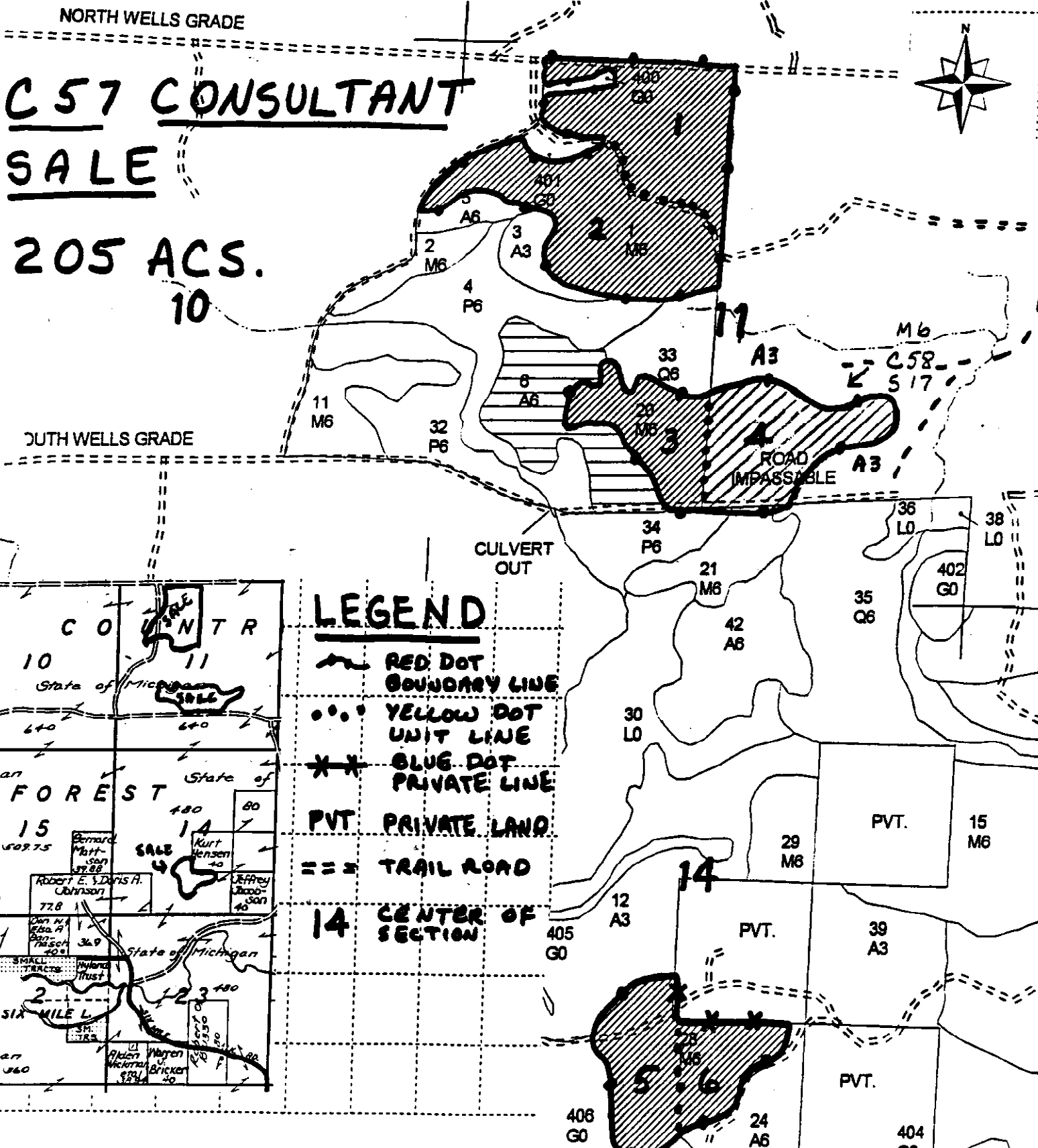
Sale No. 055 Year 03 Date 01

State Forest and Forest Management Unit: **CFMU - DICKINSON CO.** Mapped By: **WILCOX** Date: **08-21-02**

Township **42N** Range **29W** Section(s) **10 11** Subdivision **SENE NW1/4, SW1/4 & SE1/4**

Cover Type **14** **E1/2 SW & SWSE** Scale: 1 inch = **1/4 MILE**

- | | | | | | |
|-------------------|--------------------|----------------------|------------------|--------------------------|-----------------------|
| .. = Aspen | H = Hemlock | P = Lowland Poplar | V = Bog or Marsh | 1 = Non Stocked | 7 = Saw Timber Poor |
| B = Paper Birch | J = Jack Pine | Q = Mixed Swamp Cnfr | W = White Pine | 2 = Seeding Sapling Poor | 8 = Saw Timber Medium |
| C = Cedar | L = Lowland Brush | R = Red Pine | X = Non Stocked | 3 = Seeding Sapling Well | 9 = Saw Timber Well |
| E = Swamp Hdwoods | M = Mpl, Beh. Brch | S = Black Spruce | Z = Water | 4 = Pole Timber Poor | |
| F = Spruce Fir | N = Marsh | T = Tamarack | | 5 = Pole Timber Medium | |
| G = Grass | O = Oak | U = Upland Brush | | 6 = Pole Timber Well | |



C57 CONSULTANT
SALE
205 ACS.
10

- LEGEND**
- RED DOT
 - BOUNDARY LINE
 - YELLOW DOT
 - UNIT LINE
 - BLUE DOT
 - PRIVATE LINE
 - PVT** PRIVATE LAND
 - TRAIL ROAD
 - 14** CENTER OF SECTION

