

CF C37 DRY LK SNAKE

STATE OF MICHIGAN
DEPARTMENT OF NATURAL RESOURCES
TIMBER SALE MAP

SALE NO. 10102103101
YEAR 10
SALE TYPE 01

STATE FOREST AND FOREST AREA

C.C.S.F. CRYSTAL FALLS MGT. UNIT

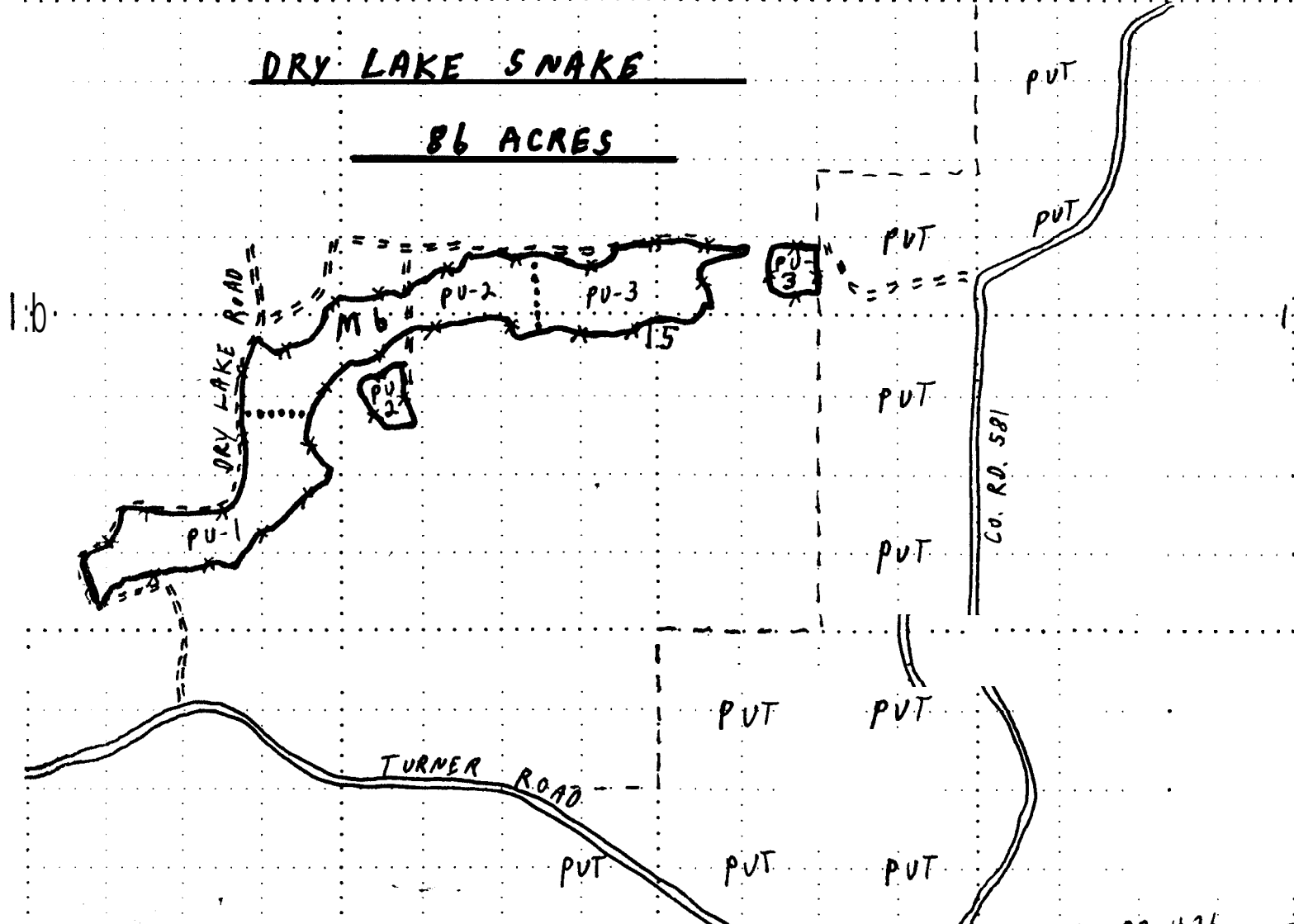
MAPPED BY TERRY CRYDERMAN

DATE 10-22-02

T 43N R 28W Section(s) 15 SW/NE, SE/NW, SW/NW, NE/SW, NW/SW.
COVER TYPE

Scale: 1 inch = 1/4 mile
DENSITY

A - Aspen	H - Hemlock	P - Lowland Poplar	V - Bog or Marsh	1 - Non Stocked	7 - Saw Timber Poor
B - Paper Birch	J - Jack Pine	Q - Mx Swamp Cnpr	W - White Pine	2 - Seedling Sapling Poor	8 - Saw Timber Medium
C - Cedar	L - Lowland Brush	R - Red Pine	X - Non Stocked	3 - Seedling Sapling Well	9 - Saw Timber Well
E - Swamp Hdwds	M - Mpl. Bch, Brch	S - Black Spruce	Z - Water	4 - Pole Timber Poor	
F - Spruce Fir	N - Marsh	T - Tamarack		5 - Pole Timber Medium	
G - Grass	O - Oak	U - Upland Brush		6 - Pole Timber Well	



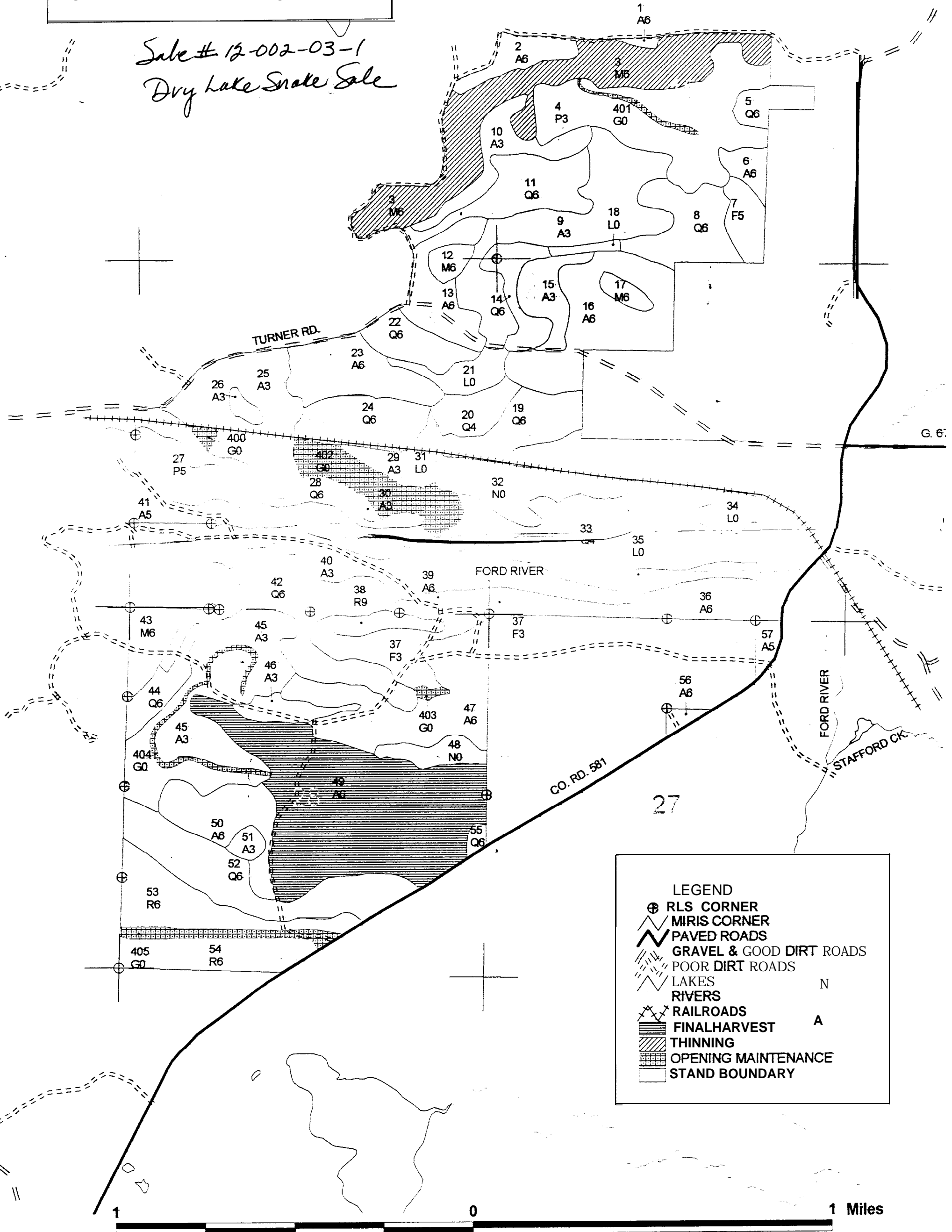
- 21
- LEGEND
- == Good DIRT ROAD
 - POOR DIRT ROAD
 - * * * * * TIMBER SALE BOUNDARY - RED
 - UNIT BOUNDARY - YELLOW
 - PU PAYMENT UNIT

NO WAY LAKE ROAD
COUNTY ROAD 581

RALPH

COMPARTMENT 37
 T43N, R28W, SEC. 15,16,21,22,27,28
 COUNTY: DICKINSON
 UNIT CRYSTAL FALLS
 FOREST: COPPER COUNTRY
 YOE: 2003
 ACRES: 1,814 GIS CALCULATED
 MAP REVISED: 3/21/2002
 STAND EXAMINER: TERRY CRYDERMAN

*Sale # 12-002-03-1
 Dry Lake State Sale*



LEGEND

- ⊕ RLS CORNER
- ⊕ MIRIS CORNER
- ▬ PAVED ROADS
- ▬ GRAVEL & GOOD DIRT ROADS
- ▬ POOR DIRT ROADS
- ▬ LAKES
- ▬ RIVERS
- ▬ RAILROADS
- ▬ FINAL HARVEST
- ▬ THINNING
- ▬ OPENING MAINTENANCE
- ▬ STAND BOUNDARY

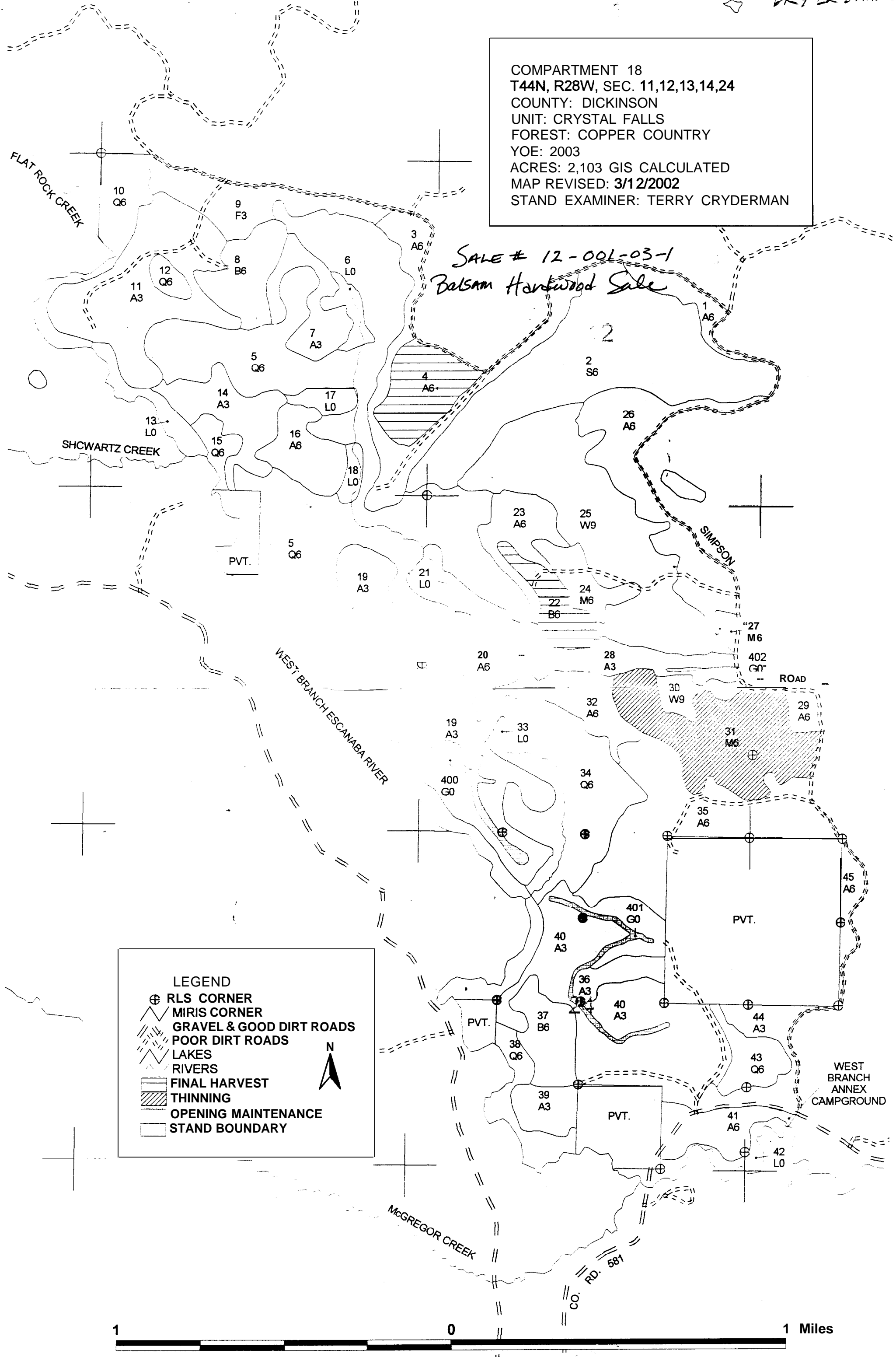
N
A



CP 637
DRY LK SNAKE

COMPARTMENT 18
T44N, R28W, SEC. 11,12,13,14,24
COUNTY: DICKINSON
UNIT: CRYSTAL FALLS
FOREST: COPPER COUNTRY
YOE: 2003
ACRES: 2,103 GIS CALCULATED
MAP REVISED: 3/12/2002
STAND EXAMINER: TERRY CRYDERMAN

*SALE # 12-001-03-1
Balsam Hardwood Sale*



LEGEND

- ⊕ RLS CORNER
- ⊕ MIRIS CORNER
- ▨ GRAVEL & GOOD DIRT ROADS
- ▧ POOR DIRT ROADS
- LAKES
- RIVERS
- ▨ FINAL HARVEST
- ▨ THINNING
- ▨ OPENING MAINTENANCE
- ▭ STAND BOUNDARY

N

