

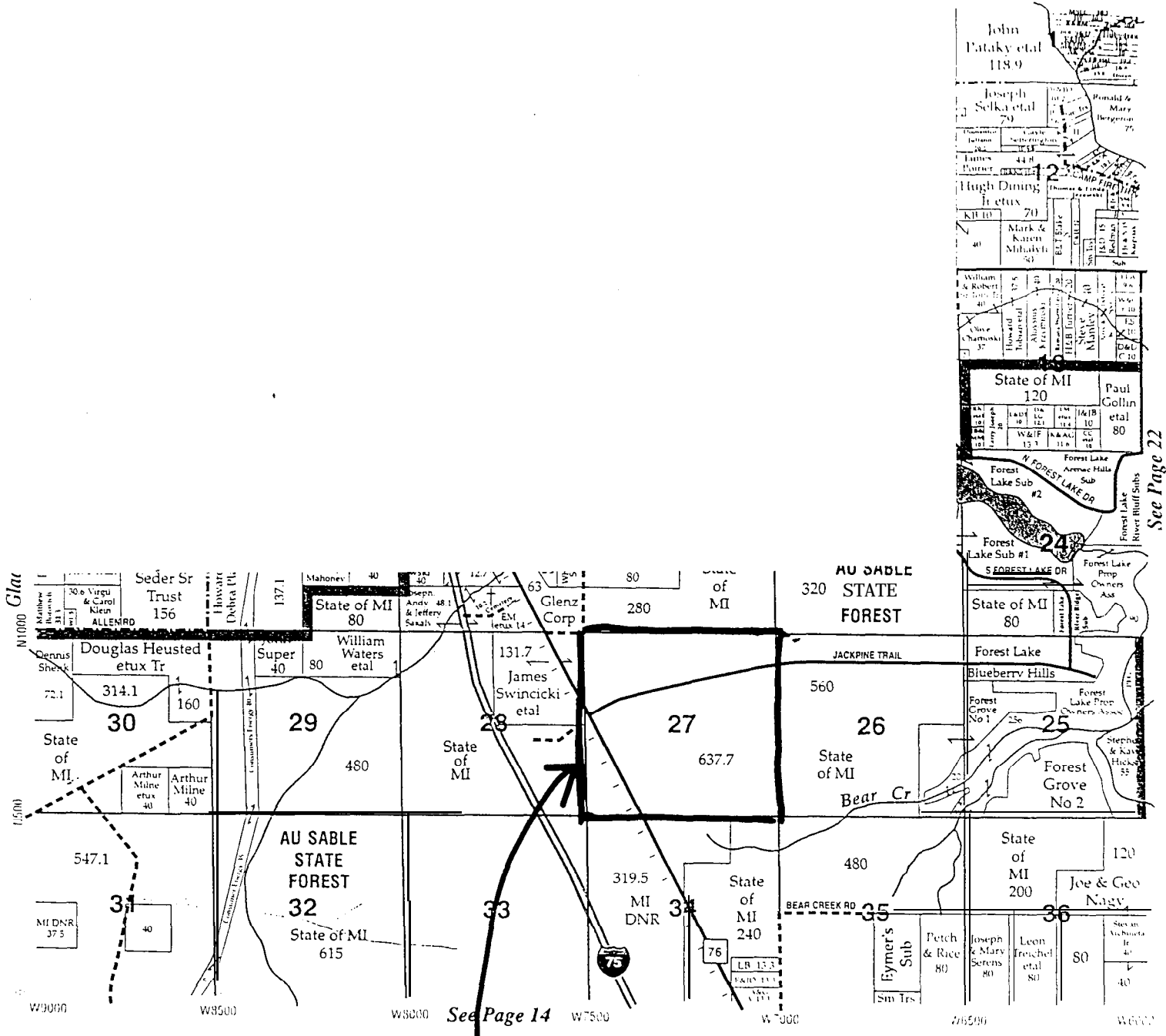
GLA Cont: 124-2

Moffatt



T. 20N. - R. 3E.

topographic, Inc. St. Cloud, MN 56301



See Page 22

See Page 14

JPT RED PINE SALE AREA

MARY ROCKWELL
Associate Broker

Residence:
517-836-2347

517-345-2662

C.A. HANES REALTY

1953 S. M-33 • WEST BRANCH MI 48661

May & Associates, Inc.

SURVEYORS

John P. May, P.S.
2209 S. M-76, Suite A
West Branch, Michigan 48661

Tele: (517) 345-1 600 Fax: (517) 345-i 100

COMPARTMENT 124
T20N, R3E, SEC. 26, 27, 28
COUNTY: ARENAC
UNIT: GLADWIN
FOREST: AU SABLE
YOE: 2003
ACRES: 1,283 GIS CALCULATED
MAP REVISED: 2/13/2003
STAND EXAMINER: BILL HORTON

LEGEND

- MIRIS CORNER
- PAVED ROADS
- == GRAVEL & GOOD DIRT ROAD
- - - POOR DIRT ROAD
- LAKE
- RIVERS
- - - INTERMITTENT STREAMS
- ++++ RAILROADS
- STAND BOUNDARY
- ▨ FINAL HARVEST
- ▩ THINNING
- ▧ DELAYED REMOVAL
- ▦ PLANTING
- ▥ DIRECT SEEDING

SALE AREA:

