



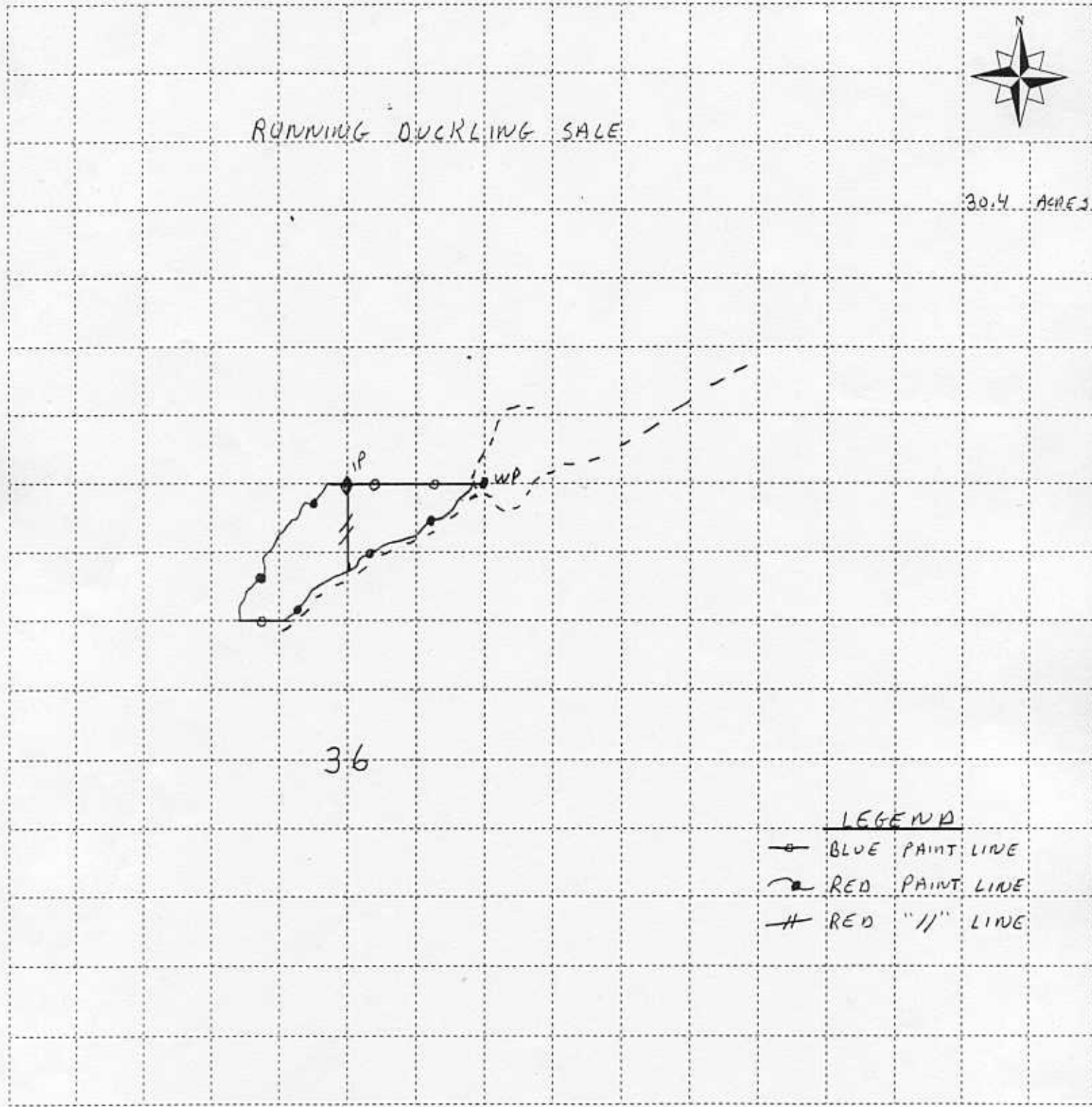
Michigan Department of Natural Resources - Forest Management Division
TIMBER SALE MAP

Sale No. 017	Year 03	Sale Type 01
-----------------	------------	-----------------

This information provided under authority of Part 525, Act 451 of 1994, as amended.

State Forest and Forest Management Unit: Gwinn Management Unit - Gwinn		Mapped By: K. LaBunbard		Date: 08-14-02
Township 42N	Range 26W	Section(s) 36	Subdivision NE $\frac{1}{4}$ NW $\frac{1}{4}$, NW $\frac{1}{4}$ NE $\frac{1}{4}$	Scale: 1 inch = 1/4

Cover Type				Density	
A = Aspen	H = Hemlock	P = Lowland Poplar	V = Bog or Marsh	1 = Non Stocked	7 = Saw Timber Poor
B = Paper Birch	J = Jack Pine	Q = Mixed Swamp Cnfr	W = White Pine	2 = Seedling Sapling Poor	8 = Saw Timber Medium
C = Cedar	L = Lowland Brush	R = Red Pine	X = Non Stocked	3 = Seedling Sapling Well	9 = Saw Timber Well
E = Swamp Hdwoods	M = Mpl, Bch, Brch	S = Black Spruce	Z = Water	4 = Pole Timber Poor	
F = Spruce Fir	N = Marsh	T = Tamarack		5 = Pole Timber Medium	
G = Grass	O = Oak	U = Upland Brush		6 = Pole Timber Well	



LEGEND
 ○ BLUE PAINT LINE
 ● RED PAINT LINE
 # RED "11" LINE