



TIMBER SALE MAP

This information provided by authority of Part 525, 1994 PA 451, as amended.

Sale Number 73-001-25	Date 05/06/2026	
Scale 1:15,840	Page 2	Of 4

Forest Management Unit Gladwin Mgt Unit	County Midland	Mapped By: Scott Shooltz
		Cruised By: Scott Shooltz

Township 15N / 16N	Range 01W	Section(s) and Subdivision(s) <small>Sec. 27 NENE,E1/2SW; Sec. 31 SE; Sec. 32 E1/2SE; Sec. 33 E1/2NE,W1/2SW,E1/2SE; Sec. 34 SWNW,SW,NESE,SWSE; Sec. 6 NWNE;</small>
------------------------------	---------------------	---

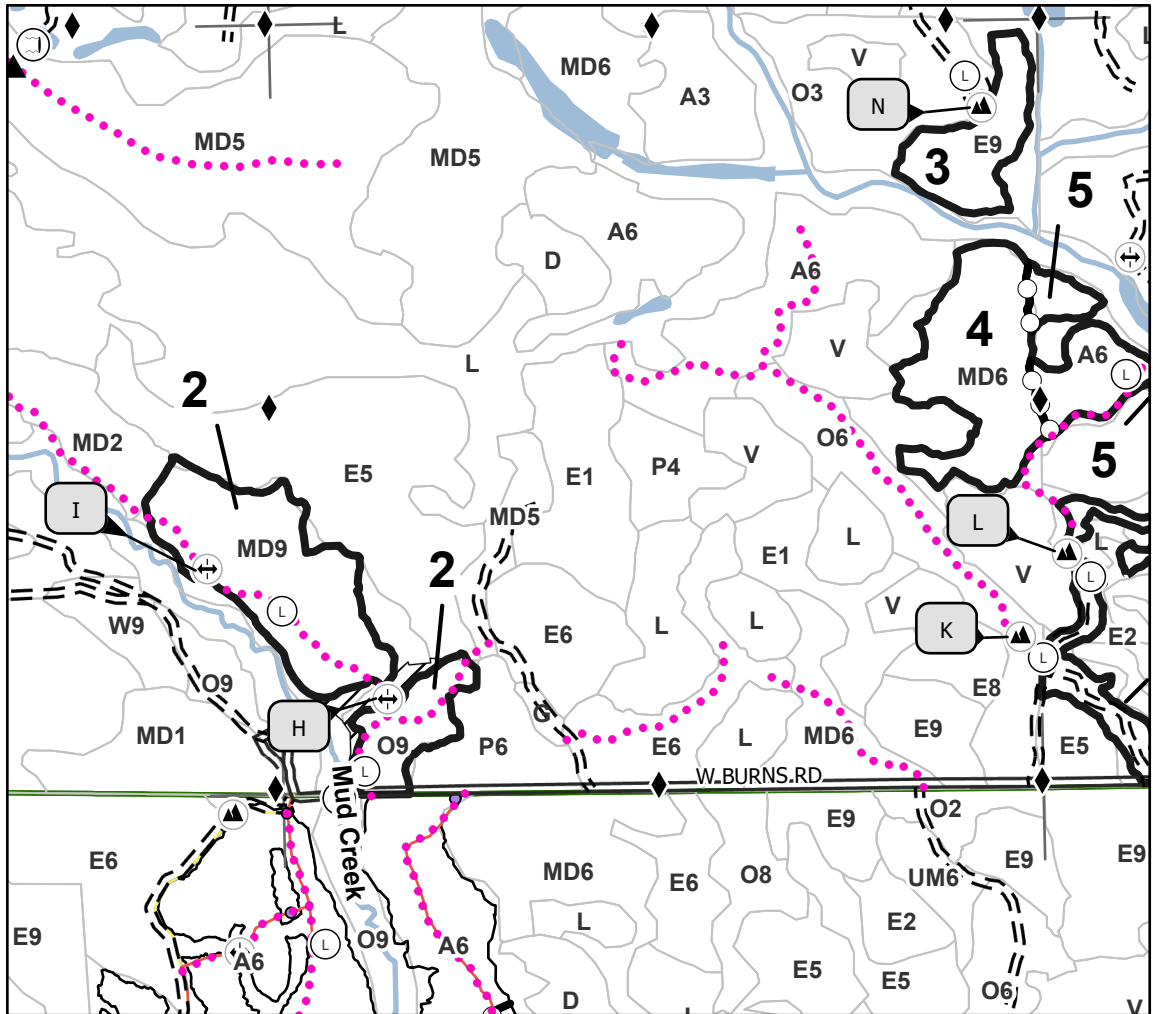
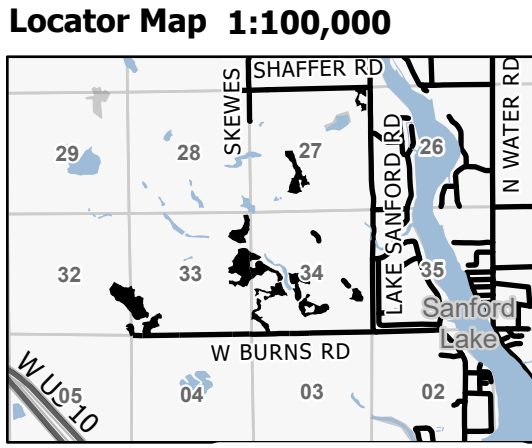
Cover Type			
A = Aspen	J = Jack Pine	O = Oak	U = Upland Brush
B = Paper Birch	K = Rock	P = Lowland Poplar	UM = Upland Mix Forest
C = Cedar	L = Lowland Brush	Q = Mixed Swamp Conifer	V = Bog or Marsh
D = Treed Bog	LM = Lowland Mix Forest	R = Red Pine	W = White Pine
E = Swamp Hardwoods	M = Maple, Beech, Birch	S = Black Spruce	X = Non Stocked
F = Spruce/Fir	MC = Mixed Conifer	T = Tamarack	Y = Sand
G = Grass	MD = Mixed Deciduous	Z = Water	
H = Hemlock	N = Marsh		

Density	
0 = Non Stocked	5 = Pole Timber Medium
1 = Seedling Sapling Poor	6 = Pole Timber Well
2 = Seedling Sapling Medium	7 = Saw Timber Poor
3 = Seedling Sapling Well	8 = Saw Timber Medium
4 = Pole Timber Poor	9 = Saw Timber Well

Payment Unit Number	Acres	Payment Unit Number	Acres
1	29.1	5	32.3
2	39.7	6	31.1
3	12.5	7	17.7
4	25	8	5.9

Quad Creek Exit

193.3 Acres



Legend

- Against State (Red)
- Payment Unit (Yellow)
- Retention Areas
- Nearby Timber Sale
- Stand
- State Forests
- Primary Forest Road
- Forest Access Route
- Administrative Access Only
- Lakes and Rivers
- Survey Grade Corner
- Berm
- Berm Construction
- Culvert Install
- Existing Culvert
- Landing Location

Use QR Code to open Map in App

