



TIMBER SALE MAP

This information provided by authority of Part 525, 1994 PA 451, as amended.

Sale Number 32-022-26	Date 05/08/2026
Scale 1:16,820	Page 1
	Of 1

Forest Management Unit Gwinn Mgt Unit	County Marquette	Mapped By: Baker Cruised By: Fischer, Gould, Siler, Yeo
-------------------------------------------------	----------------------------	------------------------------------------------------------

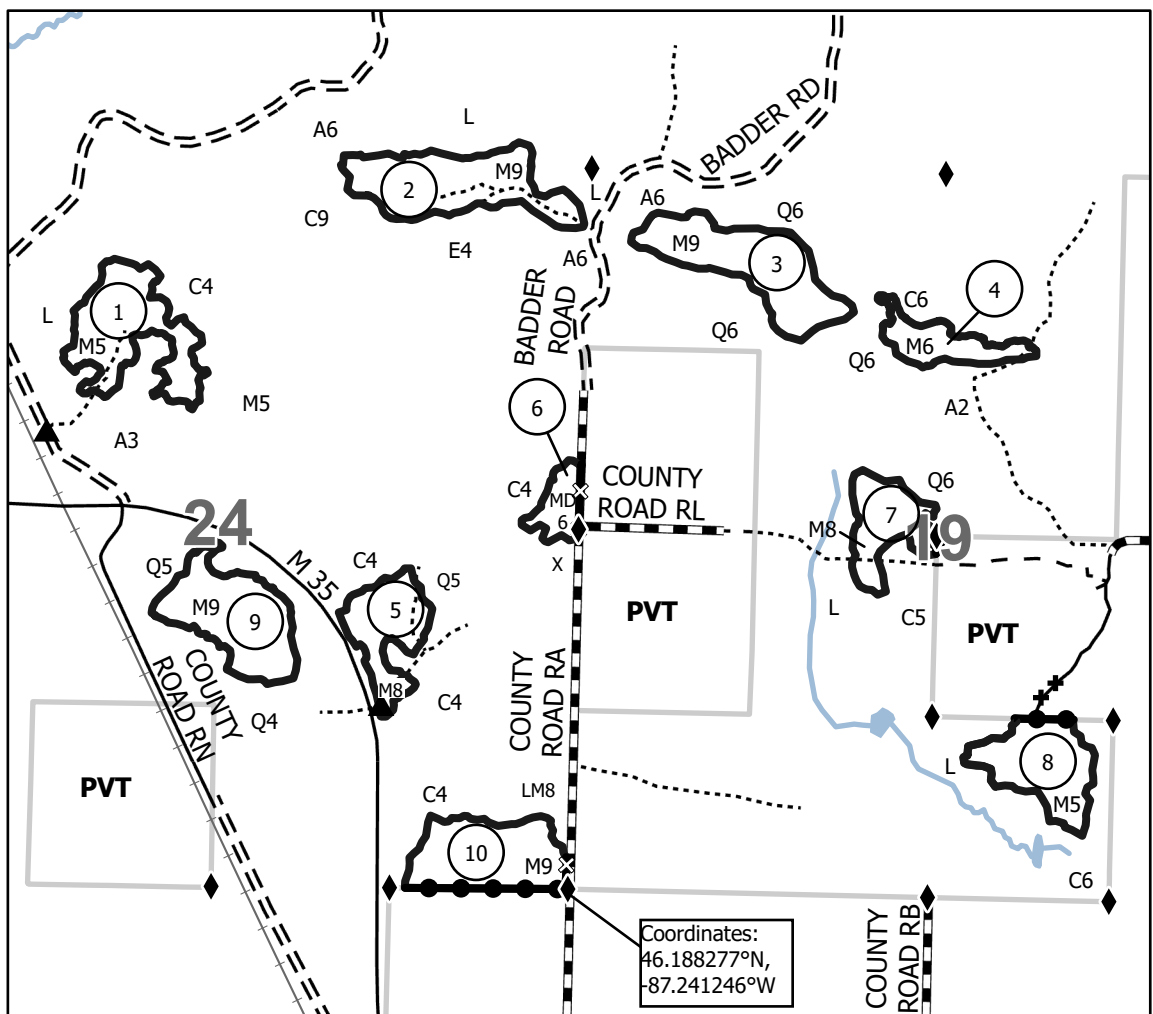
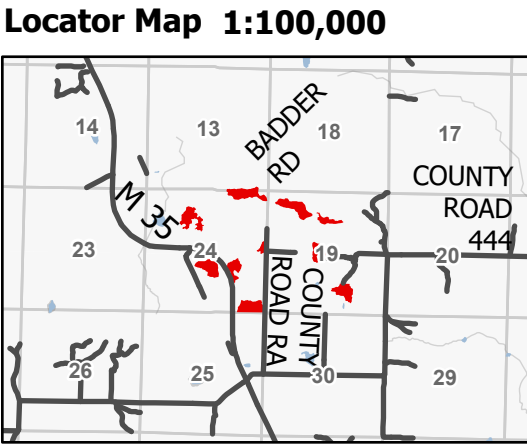
Township 44N	Range 23W / 24W	Section(s) and E1/2NW,N1/2NE,SENE,NESW,SE; Subdivision(s) Sec. 13 S1/2SE; Sec. 19 N1/2NW,SENW,W1/2NE,NESW,SWSE; Sec. 24
------------------------	---------------------------	----------------------------------------------------------------------------------------------------------------------------

Cover Type			
A = Aspen	J = Jack Pine	O = Oak	U = Upland Brush
B = Paper Birch	K = Rock	P = Lowland Poplar	UM = Upland Mix Forest
C = Cedar	L = Lowland Brush	Q = Mixed Swamp Conifer	V = Bog or Marsh
D = Treed Bog	LM = Lowland Mix Forest	R = Red Pine	W = White Pine
E = Swamp Hardwoods	M = Maple, Beech, Birch	S = Black Spruce	X = Non Stocked
F = Spruce/Fir	MC = Mixed Conifer	T = Tamarack	Y = Sand
G = Grass	MD = Mixed Deciduous	Z = Water	
H = Hemlock	N = Marsh		

Density	
0 = Non Stocked	5 = Pole Timber Medium
1 = Seedling Sapling Poor	6 = Pole Timber Well
2 = Seedling Sapling Medium	7 = Saw Timber Poor
3 = Seedling Sapling Well	8 = Saw Timber Medium
4 = Pole Timber Poor	9 = Saw Timber Well

Payment Unit Number	Acres	Payment Unit Number	Acres
1	13	6	3.4
2	14.1	7	7.3
3	14.2	8	10.3
4	5.4	9	12.9
5	8.2	10	12.1

**GUMBO
MUDDER
MAPLE**
Compartment 32027
100.9 Acres



Legend

- Payment Unit
- Lakes and Rivers
- Against State (Red)
- Stand Boundary (Unpainted)
- Private Line (Blue)
- Streams
- State Boundary
- Forest Access Route
- Administrative Access Only
- Paved Road
- Government Gravel/Dirt
- Private Gravel/Dirt
- Railroads
- Survey Corners
- Berm
- Wet Crossing Device Recommended

Coordinates:
46.188277°N,
-87.241246°W

Use QR Code to open Map in App

