



**DEPARTMENT OF NATURAL RESOURCES
STATE OF MICHIGAN**

TIMBER SALE PROSPECTUS #7028

SCHEDULED SALE DATE AND TIME: 4:00 p.m. (local time) on April 14, 2022.

LOCATION: TRAVERSE CITY MGMT UNIT, 2122 M 37 SOUTH, TRAVERSE CITY, MI 49685.

PROSPECTUS NOTE: Effective immediately: all bid openings for the Traverse City Management (Kalkaska Field Office and Traverse City Field Office) will be held at the Traverse City Field Office regardless of sale location within the unit. All payments will now be handled through the Traverse City Field Office. The Kalkaska Field Office will no longer accept payments or hard paper copies of timber sale bids. Payments for all contracts, use permits, bonds, etc. should be sent to the Traverse City Field Office.

The bidder is advised to inspect the sale area and review the location, estimated volumes, operating costs and contract terms of proposed sales. Please be aware that some landowners may request 60 days or more notice for access across their land.

All In Red Pine (61-001-22) / T28N, R14W, SEC. 36, SE.

Leelanau County, Advertised Price \$24,004.20, 56.5 Acres, Red Pine, Jack Pine.

SALE NOTE: All units of volume listed for this sale were estimated using the Inventory Manager computer program and the new Michigan taper model.

A recreation site such as a trail, pathway, or campground is within the sale area or the vicinity. Certain restrictions/specifications may be applicable including time restrictions.

PRD Pine (61-008-22) / T26N, R11W, SEC. 28, SENW.

Grand Traverse County, Advertised Price \$5,293.40, 7.4 Acres, Red Pine.

SALE NOTE: All units of volume listed for this sale were estimated using the Inventory Manager computer program and the new Michigan taper model.

Plowman Pine (61-011-22) / T28N, R14W, SEC. 35, S1/2NW,SENE,N1/2SW,SE.

T28N, R14W, SEC. 36, SWNW.

Leelanau County, Advertised Price \$117,063.85, 173.8 Acres, Red Pine, Jack Pine.

SALE NOTE: All units of volume listed for this sale were estimated using the Inventory Manager computer program and the new Michigan taper model.

A recreation site such as a trail, pathway, or campground is within the sale area or the vicinity. Certain restrictions/specifications may be applicable including time restrictions.

Eleventh Hour Harvest (61-072-21) / T25N, R14W, SEC. 20, NENE.

T25N, R14W, SEC. 21, N1/2NW,NWNE.

Benzie County, Advertised Price \$25,836.90, 26.5 Acres, Hardwood, Sugar Maple.

SALE NOTE: All units of volume listed for this sale were estimated using the Inventory Manager computer program and the new Michigan taper model.

Advanced Sugar maple saplings and poles exists in Payment Unit 1 and the goal is to protect these trees from logging activity damage as much as possible.

A recreation site such as a trail, pathway, or campground is within the sale area or the vicinity. Certain restrictions/specifications may be applicable including time restrictions.

BID INSTRUCTIONS (VER. 07/02/2018):

1. Scheduled Bid Location, Date, and Time (2/11)

Bids must be received by the Unit Manager, TRAVERSE CITY OFFICE, 2122 M 37 South, Traverse City, MI 49685, no later than 4:00 p.m. (local time) on April 14, 2022. For further information concerning this sale, contact David Lemmien at 231-922-6040.

2. Bidder's Qualifications (5/16)

Purchaser shall obtain workers compensation insurance to cover claims under Michigan's Worker's Disability Compensation Act of 1969 or similar employee benefit act of any other state applicable to an employee. If all or part of a timber sale was prepared by a private contractor, the contractor and that contractor's company are not permitted to bid on the timber sale contract. Bids will not be accepted from individuals or companies appearing on the DNR/FRD No-Bid List. This list contains the names of purchasers who previously failed to execute a contract within 21-days or who have a history of poor performance.

3. Preparation of Sealed Bids (5/16)

Bid Forms may be completed online thru Michigan DNR Timber Sale Online Bidding (OLB) at www.michigan.gov/timberbidding or by completing the hardcopy Bid Form found in the Timber Sale Prospectus. Hardcopy Bid Forms shall be manually signed in ink. Registration in OLB is considered your 'signature' for all bids submitted thru that system. Bid prices must be entered for each species and product in the Bid Price column for all material subject to bidding and all fill-in blanks must be completed. If erasures or other changes appear on the hardcopy Bid Form, each erasure or change must be initialed by the person signing the bid.

4. Submission of Sealed Bids (5/16)

Bid forms may be obtained from the Unit Manager or thru OLB. Bids may be submitted hardcopy or thru OLB. All hardcopy bids must be submitted on the bid form and in an envelope clearly identified as described in this section. NOTE: Only one bid form per bid envelope. Sealed bids must be submitted to the Unit office designated in the prospectus and must be submitted at or prior to the time established in the prospectus. The envelope should show on the outside (a) the sale name or number and (b) the date and time of bid opening, as shown in the prospectus. Bids received after the time specified in the sale prospectus are late bids and will be rejected.

It is possible for a bidder to submit multiple bids on a single sale. For example, a bid may be submitted hardcopy and a bid may be submitted thru OLB. Or, two bidders from the same company could both submit bids on the same sale. If this were to happen, the State would accept all bids received and award the contract accordingly. All bidding and contractual requirements would apply to all bids received.

5. Public Opening of Sealed Bids (7/16)

If conditions permit, the sealed bids will be publicly opened and posted at the time and place set in the prospectus.

If a bidder, present at a bid opening, has submitted bids on more than one sale, that bidder may withdraw their unopened bid envelopes or announce the withdrawal of their online bid after being declared the successful bidder on one sale.

6. Award of Contract (1/11)

Award of the contract will be made to the Bidder whose bid, conforming to the prospectus, is most advantageous to the State of Michigan on the basis of total value at rates bid for the estimated quantities. The State reserves the right to reject any bid or waive any minor irregularity in bids received. A written award mailed (or otherwise furnished) to the successful Bidder shall be deemed to result in a binding contract without further action by either party.

7. Down Payment (1/11)

The Bidder to whom award is made must make a down payment within 21 days of the sale award. The amount of the down payment will be calculated as shown in the Bond and Payment Schedule of this prospectus. Only cash may be used to meet this requirement.

8. Performance Security (1/11)

As guarantee of faithful performance, a cash bond, certificate of deposit, surety bond or irrevocable letter of credit (LOC) is required within 21 days of the sale award. The amount of the performance security is shown in the Bond and

Payment Schedule of this prospectus. If an LOC or surety is used, the coverage must extend for at least 6 months beyond the contract expiration.

9. Timber Sale Contract (7/18)

Additional conditions and requirements common to all timber sales are listed on the timber sale contract (R4031) and are available on line at www.michigan.gov/timber. Contact the Unit Manager for additional information or a sample contract. Within 21 days of the date of the award letter, the bidder must sign the contract and provide the required down payment, performance security, and verification of worker's disability compensation. The down payment and performance security shall be in accordance with the provisions of the timber sale contract, in the sums stated in this prospectus. If these actions are not taken, then the Bidder, the Bidder's corporation, and the corporation's principals may not be permitted to bid on State timber sales for a period of 3 months after the first offense, 6 months after the second offense, and 1 year after the third offense. An offense will only be counted against the Bidder for 5 years. In addition, the Bidder certifies that if awarded this contract, the Bidder will complete the timber sale contract in accordance with its terms and any modifications thereof including requirements to purchase, cut, and remove the included timber by the expiration date.

Payment Unit values in the State Forest Timber Sale Contract are calculated based on the advertised value of the Payment Unit as a percentage of the total advertised value of the contract. The advertised value of each Payment Unit is given in the Description of Timber by Payment Unit table on the Timber Sale Information page. For example, if the value of Payment Unit 1 is advertised as \$1,500 and the total Timber Sale value is advertised as \$10,000, the contract price for Payment Unit 1 will be 15% of the total bid price ($\$1,500/\$10,000 * 100$).

10. Disclaimer of Estimates and Bidder's Warranty of Inspection (7/16)

Before submitting this bid, the Bidder is advised and cautioned to inspect the sale area, review the requirements of the sale contract, and take other steps as may be reasonably necessary to ascertain the location, estimated volumes, construction estimates, and operating costs of the proposed sale. Failure to do so will not relieve the Bidder from responsibility for completing the contract.

The Bidder warrants that this bid is submitted solely on the basis of the Bidder's examination and inspection of the quality and quantity of the timber offered for sale and the Bidder's opinion of the value thereof and the costs of recovery. No reliance should be placed on the State of Michigan's estimates of timber quality, quantity or costs of recovery. Bidder further acknowledges that the State of Michigan: (i) expressly disclaims any warranty of fitness of timber for any purpose; (ii) offers this timber as is without any warranty of quality (merchantability) or quantity and (iii) expressly disclaims any warranty as to the quantity or quality of timber sold.

11. Certification and Chain-of-Custody (10/14)

Unless otherwise indicated in the contract under section 7 – Other Conditions of the Sale Specific Conditions & Requirements, the area encompassed by this timber sale is certified to the standards of the Forest Stewardship Council (FSC) - Certificate #SCS-FM/COC-00090N and the Sustainable Forestry Initiative (SFI) - Certificate #NSF-SFIS-5Y031-SF5. Forest products from this sale may be delivered to the mill as "FSC 100% and / or SFI certified" as long as the contractor hauling the forest products is chain-of-custody (COC) certified or covered under a COC certificate from the destination mill. The purchaser is responsible for maintaining COC after leaving the sale area.

12. Good Neighbor Authority (GNA) Requirements (7/16)

If the name of this timber sales contains the acronym GNA, it is authorized by the Good Neighbor Authority (GNA) and covered by various agreements between the U.S. Forest Service and the State. The timber sale occurs on federal land and the following conditions apply:

GNA contracts on US Forest Service land will not be awarded to purchasers on the Federal list of excluded parties. The System for Award Management (SAM) will be checked for active excluded parties prior to award of contract. In addition, the Bidder to whom award is made must complete an Assurance Regarding Felony Conviction or Tax Delinquent Status for Corporate Applicants (AD-3031).

13. Good Neighbor Authority (GNA) Requirements, con't (9/16)

Bidder certifies, by signing this bid form, that to the best of Bidder's knowledge that the following representations are accurate and complete.

- a. That the Bidder and its principals are not presently debarred, suspended, proposed for debarment, declared ineligible, or voluntary excluded from timber sales (covered transactions) by any Federal department or agency.
- b. That the Bidder and its principals have not within a 3-year period preceding this bid been convicted of or had a civil judgment rendered against them for commission of fraud or a criminal offense in connection with obtaining , attempting to obtain, or performing a public (Federal, State, or local) transaction or contract under a public transaction; violation of Federal or State antitrust statutes or commission of embezzlement, theft, forgery, bribery, falsification or destruction of records, making false statements, or receiving stolen property.
- c. That the Bidder and its principals are not presently indicted for or otherwise criminally or civilly charged by a governmental entity (Federal, State, or local) with commission of any of the offenses enumerated in paragraph b of this certification.
- d. That the Bidder and its principals have not within a 3-year period preceding this bid had one or more public transactions (Federal, State, or local) terminated for breach or default of a timber or forest product contract.

Bidders that cannot certify this requirement, in whole or in part, shall submit an explanation with their bid.

DAN EICHINGER
Director

TIMBER SALE INFORMATION

All In Red Pine (61-001-22)
T28N, R14W, SEC. 36.
Leelanau County (Advertised Price \$24,004.20)

SALE NOTE: All units of volume listed for this sale were estimated using the Inventory Manager computer program and the new Michigan taper model.

A recreation site such as a trail, pathway, or campground is within the sale area or the vicinity. Certain restrictions/specifications may be applicable including time restrictions.

A timber sale contract for this lump sum, sealed bid timber sale will be awarded to the responsible bidder offering the highest sealed bid price. All units of volume listed below were estimated using the Inventory Manager computer program and the new Michigan taper model. Bids must be at or above the following advertised price for each product and species:

| <u>PRODUCTS & SPECIES</u> | <u>ESTIMATED UNITS*</u> | <u>ADVERTISED PRICE</u> |
|-------------------------------|-------------------------|-------------------------|
| Sawtimber | | |
| Red Pine | 7.7 MBF | \$ 89.00 / MBF |
| Pulpwood | | |
| Austrian Pine | 4 Cords | \$ 9.20 / Cord |
| Jack Pine | 45 Cords | \$ 9.70 / Cord |
| Red Pine | 668 Cords | \$ 34.20 / Cord |

* The total volume is statistically estimated within plus (+) or minus (-) 7.68 percent. There are an estimated 735 cords on this timber sale, plus or minus 56 cords at the 95% confidence level. The estimated units are final and not subject to adjustment. Prospective bidders are urged to examine this timber and to make their own estimates of quantity and quality.

BOND AND PAYMENT SCHEDULE:

1. A bond in the amount of \$1,200.00 to insure faithful performance of the conditions of the contract will be deposited by the successful bidder within 21 days of the sale award.
2. Cutting in any sale or unit without the required advance payment would be considered a trespass.
3. Total payment must be paid in advance or according to the following schedule :
 - (a) Ten percent (10%) of the sale value must be paid within 21 days of the sale award.
 - (b) The 10% down payment will be credited towards the first unit cut.
 - (c) Payment for each of the following units must be made before cutting begins in that unit:

| PAYMENT UNIT NUMBER | PERCENT OF TOTAL SALE VALUE |
|---------------------|-----------------------------|
| 01 | 25.8% |
| 02 | 7.4% |
| 03 | 66.8% |

4. If no cutting takes place, the 10% down payment will not be refunded.
5. Operations on the contract issued will terminate on 06/30/2024.

SALE STATISTICS

Volumes were calculated in cubic feet using the Michigan taper model. Cubic foot volume includes all wood inside bark for the product indicated. For display purposes, cubic feet were converted to cords and MBF using a simple conversion factor, e.g. 79 cubic feet per cord and 185 cubic feet per MBF. The cubic foot volumes are precise; the cords and MBF volumes are not. Cubic foot volume cannot be directly converted to cords or boards with precision.

SALE VOLUMES

The total estimated sale volume may not equal the sum of the species/products due to the nature of statistical calculations associated with double sampling methodology.

| VOLUME | | STATISTICAL RANGE IN CORDS | | |
|------------------|-------------|----------------------------|---------|---------|
| TOTAL CUBIC FEET | TOTAL CORDS | PERCENT ERROR | MINIMUM | MAXIMUM |
| 58,041 | 735 | 7.68% | 678 | 791 |

VDU VOLUMES

A VDU is a Volume Determination Unit. Volumes and their associated statistics are calculated at the VDU level and summarized to the sale level. There is often a one to one relationship between a VDU and a Payment Unit, but not always, depending on the cruise design. Refer to the VDU TO PAYMENT UNIT table.

| VDU | VOLUME | | PERCENT ERROR | RANGE IN CORDS | |
|---------------|------------------|-------------|---------------|----------------|------------|
| | TOTAL CUBIC FEET | TOTAL CORDS | | MINIMUM | MAXIMUM |
| 74 | 14,297 | 181 | 15.59% | 153 | 209 |
| 76 | 39,202 | 496 | 9.36% | 450 | 543 |
| 274 | 4,333 | 55 | 26.29% | 40 | 69 |
| TOTAL: | 57,832 | 732 | | 643 | 821 |

VDU TO PAYMENT UNIT

When a VDU is associated with more than one Payment Unit (PU), the VDU volumes are assigned to the PU based on acres of the VDU within the PU.

| VDU | VDU ACRES | PU | PU ACRES |
|---------------|-------------|----|-------------|
| 74 | 12.3 | 1 | 12.3 |
| 76 | 37.3 | 3 | 37.3 |
| 274 | 6.9 | 2 | 6.9 |
| TOTAL: | 56.5 | | 56.5 |

DESCRIPTION OF TIMBER BY PAYMENT UNIT (PU)

| PU | MARKET GROUP | PRODUCT | QUANTITY | UNIT | ACRES | ADVERTISE PRICE |
|--------|---------------|-----------|----------|-------|-------|-----------------|
| 1 | Red Pine | Pulpwood | 181 | Cords | 12.3 | \$6,190.20 |
| 2 | Austrian Pine | Pulpwood | 4 | Cords | 6.9 | \$1,781.00 |
| | Red Pine | | 51 | Cords | | |
| 3 | Red Pine | Sawtimber | 7.7 | MBF | 37.3 | \$16,033.00 |
| | Jack Pine | Pulpwood | 45 | Cords | | |
| | Red Pine | | 436 | Cords | | |
| TOTAL: | | | 7.7 | MBF | | |
| TOTAL: | | | 717 | Cords | | |

Sale Specific Conditions & Requirements

Sale Name: All In Red Pine

Sale Number: 61-001-22 Seq#: 1

1 - Sale Area

1.2 - Boundaries

1.2.1 - Painted boundaries (9/19)

The sale boundaries are marked and identified by red paint. Exterior sale boundary lines against state are marked with red paint. The painted boundary line trees are not Included Timber and are to be protected.

2 - Timber Specifications

2.1 - Included Timber

2.1.8 - Designated plantation row unit(s) (12/08)

Within Payment Unit(s) 1, 2, and 3, all red pine trees which meet minimum piece specifications in 2.2 Utilization, within designated plantation rows are designated for cutting. Designated plantation rows in Payment Units 1 and 3 begin with the third row in from the outside of the plantation, then continue every third row. Designated rows in Payment Unit 2 begin with the third row in from the outside of the plantation, then continue every fourth row. Because of the variability of row direction, it shall be the responsibility of the Purchaser to maintain the third or fourth row sequence. Avoid cutting any oak trees within Payment Unit 2. Within all Payment Units, cut all jack, Austrian and scotch pine trees which may be removed without damaging residuals. Other tree species may be cut only as necessary to facilitate harvest of designated red pine trees and must be left on site and lopped to within 36 inches of the ground.

2.2 - Utilization

2.2.4 - Skidding length (2/14)

Skidding of unlimbed tops or lengths over 17 feet is not permissible unless approved by the Unit Manager or his/her representative.

4 - Transportation

4.1 - Construction

4.1.6 - Road construction (1/09)

Improvements of existing roads shall be done in such a way as to minimize the environmental and visual impacts. Merchantable trees shall be cut and utilized unless otherwise directed. Non-merchantable trees shall be severed and laid flat on the ground. Slash shall be scattered, and not left in windrows and kept a minimum of 20 feet back from the road edge. Stumps shall be set upright, not left on edge, and be moved at least 30 feet away from the road edge. Disturbed soil shall be feathered into the woods and not left in berms or windrows.

4.1.7 - Road closure (10/11)

The Shore-to-Shore riding/hiking trail runs through the Sale Area on a closed dirt road, as shown on the Timber Sale Map. There are barrier posts installed where the trail meets Plowman Road to the west of the sale and Pettengill Road to the south. This road may be used for sale operations, but all barrier posts must be replaced after sale operations are completed. The road must be bladed and cleared of debris to the satisfaction of the sale administrator.

4.1.12 - No new roads (1/12)

No new roads will be permitted in any Payment Unit. All operations are limited to existing roads. Skid trails only will be allowed.

5 - Operations

5.2 - Conduct of Operations

5.2.1 - Slash

5.2.1.8 - Slash height (12/08)

No slash or tree tops may exceed 36 inches in height.

5.2.3 - Operating Restrictions

5.2.3.1 - Operating restrictions (9/11)

Within Payment Unit(s) 1, 2, and 3, cutting, skidding, and hauling are not permitted during the period of April 1 to October 31. This restriction is to avoid conflict with recreational trail users.

5.2.3.6 - Bark beetle restriction (12/08)

In the event drought creates a high risk of pine bark beetle infestation, pine is not to be cut during the period March 1 through July 1, unless all portions of trees greater than two inches in diameter are removed from the sale area, reduced to chips, or treated to the satisfaction of the Unit Manager or his/her representative, within fifteen days of being severed from the stump. Pine log decks, pulpwood piles and treetops that are piled for chipping in the fall or winter within a 1/4 mile of susceptible sites must be removed before March 15. Residual slash must not be placed in piles or rows and must be spread over the site for quick drying. The Department of Natural Resources will exercise this specification if the risk of damage warrants.

5.2.38 - No decking against live trees (2/04)

Cut products may not be decked against unmarked or designated leave trees.

5.2.40 - Pathway protection (10/10)

The Shore to Shore riding/hiking trail is shown on the Timber Sale Map. Do not cut trees or damage posts with blue pathway markers. Maintain a 20-foot-wide slash, debris, and rut free zone daily, using the pathway as the centerline. Skidding across the trail may only occur in locations approved by the sale administrator.

5.4 - Soil Protection

5.4.3 - Erosion control (12/08)

Skid trails or haul roads may require erosion control structures or berms per direction of the Unit Manager or his/her representative.

6 - Safety and Fire Prevention

6.2 - Signing

6.2.3 - Recreational trail posting (10/20)

The Purchaser is responsible for posting and maintaining caution signs on the Shore to Shore Trail prior to beginning operations. The trail must be posted at appropriate distances from the Sale Area to warn of logging activity and truck traffic at both ends of the trail. Signs must be removed when harvest operations are suspended or completed. The Purchaser will provide these signs.



TIMBER SALE MAP

This information provided by authority of Part 525, 1994 PA 451, as amended.

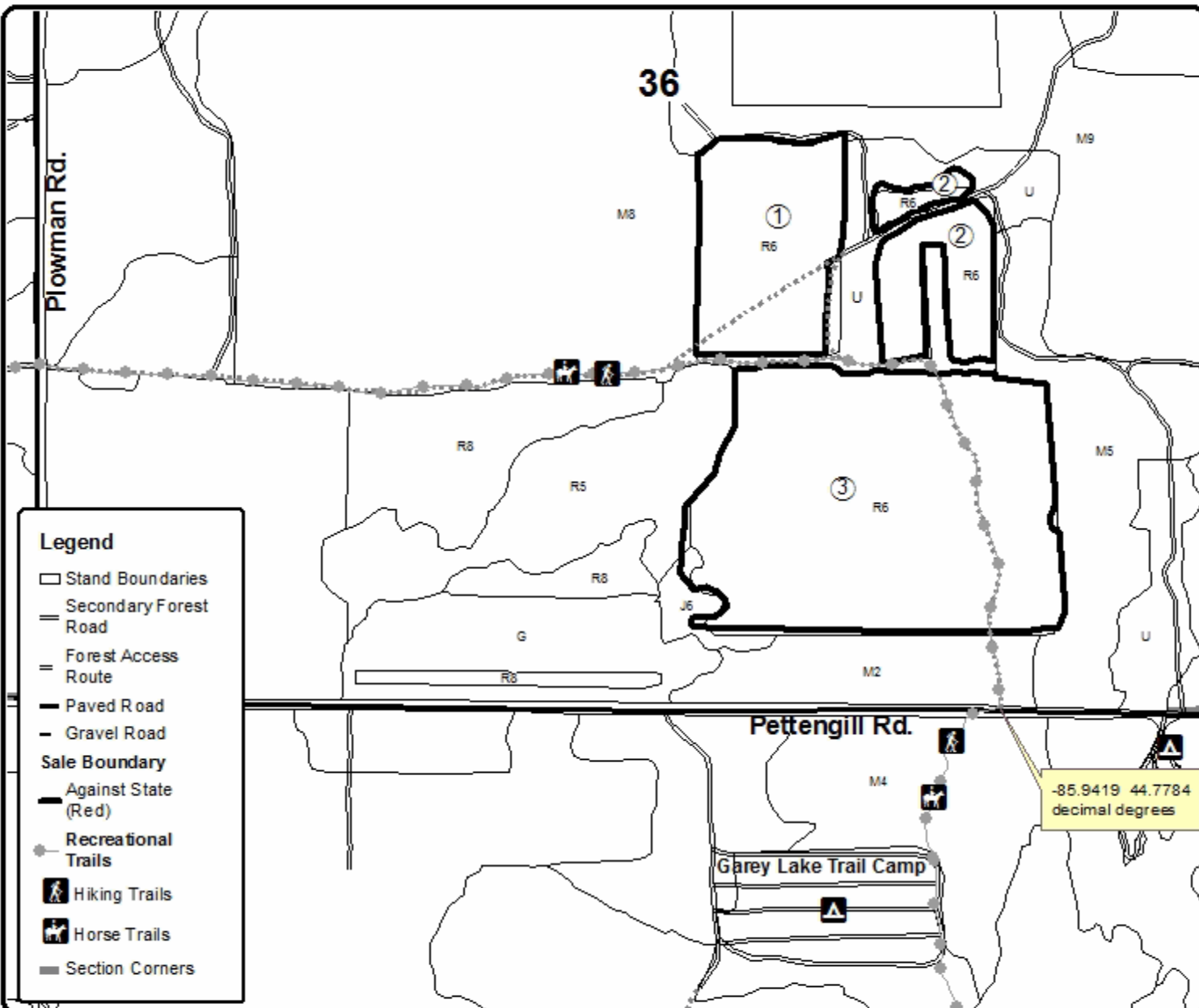
| | |
|-------------|------|
| Sale Number | Year |
| 61-001 | 22 |

| | | | | | |
|---|--------------------|--|--------------------|-----------|---------|
| Forest Management Unit Traverse City | County Leelanau | Mapped By Tim Webb | Date 10/08/2021 | Page 1 | of 1 |
| Township 28N | Range 14W | Section(s) and Subdivision(s) S. 36: SE 1/4 | Scale 1:7,920 | | |

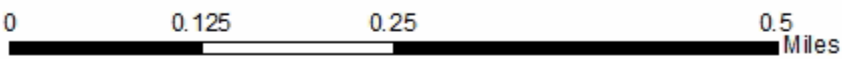
| Cover Type | | | | Density | |
|---------------------|----------------------|-------------------------|-------------------|----------------------------|------------------------|
| A = Aspen | H = Hemlock | N = Marsh | U = Upland Brush | 0 = Non Stocked | 5 = Pole Timber Medium |
| B = Paper Birch | J = Jack Pine | O = Oak | UM = Upland Mixed | 1 = Seeding Sapling Poor | 6 = Pole Timber Well |
| C = Cedar | L = Lowland Brush | P = Lowland Poplar | V = Bog or Marsh | 2 = Seeding Sapling Medium | 7 = Saw Timber Poor |
| D = Treed Bog | LM = Lowland Mixed | Q = Mixed Swamp Conifer | W = White Pine | 3 = Seeding Sapling Well | 8 = Saw Timber Medium |
| E = Swamp Hardwoods | M = Mpl. Ech. Birch | R = Red Pine | X = Non Stocked | 4 = Pole Timber Poor | 9 = Saw Timber Well |
| F = Spruce Fir | MC = Mixed Conifer | S = Black Spruce | Z = Water | | |
| G = Creas | MD = Mixed Deciduous | T = Tamarack | | | |

| PU | Acres |
|----|-------|
| 1 | 12.3 |
| 2 | 6.9 |
| 3 | 37.3 |

All In Red Pine
Compartment 61003
56.5 Acres



| Legend | |
|--------|-----------------------------------|
| | Stand Boundaries |
| | Secondary Forest Road |
| | Forest Access Route |
| | Paved Road |
| | Gravel Road |
| | Sale Boundary Against State (Red) |
| | Recreational Trails |
| | Hiking Trails |
| | Horse Trails |
| | Section Corners |



TIMBER SALE INFORMATION

PRD Pine (61-008-22)

T26N, R11W, SEC. 28.

Grand Traverse County (Advertised Price \$5,293.40)

SALE NOTE: All units of volume listed for this sale were estimated using the Inventory Manager computer program and the new Michigan taper model.

A timber sale contract for this lump sum, sealed bid timber sale will be awarded to the responsible bidder offering the highest sealed bid price. All units of volume listed below were estimated using the Inventory Manager computer program and the new Michigan taper model. Bids must be at or above the following advertised price for each product and species:

| <u>PRODUCTS & SPECIES</u> | <u>ESTIMATED UNITS*</u> | <u>ADVERTISED PRICE</u> |
|-------------------------------|-------------------------|-------------------------|
| Sawtimber | | |
| Red Pine | 7.6 MBF | \$ 89.00 / MBF |
| Pulpwood | | |
| Red Pine | 135 Cords | \$ 34.20 / Cord |

* The total volume is statistically estimated within plus (+) or minus (-) 8.60 percent. There are an estimated 124 cords on this timber sale, plus or minus 11 cords at the 95% confidence level. The estimated units are final and not subject to adjustment. Prospective bidders are urged to examine this timber and to make their own estimates of quantity and quality.

BOND AND PAYMENT SCHEDULE:

1. A bond in the amount of \$265.00 to insure faithful performance of the conditions of the contract will be deposited by the successful bidder within 21 days of the sale award.
2. Cutting in any sale or unit without the required advance payment would be considered a trespass.
3. Total payment must be paid in advance or according to the following schedule :
 - (a) Ten percent (10%) of the sale value must be paid within 21 days of the sale award.
 - (b) The remainder is due before cutting begins.
 - (c) Payment for each of the following units must be made before cutting begins in that unit:

| <u>PAYMENT UNIT NUMBER</u> | <u>PERCENT OF TOTAL SALE VALUE</u> |
|----------------------------|------------------------------------|
| 01 | 100.0% |
4. If no cutting takes place, the 10% down payment will not be refunded.
5. Operations on the contract issued will terminate on 06/30/2024.

SALE STATISTICS

Volumes were calculated in cubic feet using the Michigan taper model. Cubic foot volume includes all wood inside bark for the product indicated. For display purposes, cubic feet were converted to cords and MBF using a simple conversion factor, e.g. 79 cubic feet per cord and 185 cubic feet per MBF. The cubic foot volumes are precise; the cords and MBF volumes are not. Cubic foot volume cannot be directly converted to cords or boards with precision.

SALE VOLUMES

The total estimated sale volume may not equal the sum of the species/products due to the nature of statistical calculations associated with double sampling methodology.

| <u>VOLUME</u> | | <u>STATISTICAL RANGE IN CORDS</u> | | |
|-------------------------|--------------------|-----------------------------------|----------------|----------------|
| <u>TOTAL CUBIC FEET</u> | <u>TOTAL CORDS</u> | <u>PERCENT ERROR</u> | <u>MINIMUM</u> | <u>MAXIMUM</u> |
| 9,790 | 124 | 8.60% | 113 | 135 |

VDU VOLUMES

A VDU is a Volume Determination Unit. Volumes and their associated statistics are calculated at the VDU level and summarized to the sale level. There is often a one to one relationship between a VDU and a Payment Unit, but not always, depending on the cruise design. Refer to the VDU TO PAYMENT UNIT table.

| VDU | VOLUME | | PERCENT ERROR | RANGE IN CORDS | |
|---------------|------------------|-------------|---------------|----------------|------------|
| | TOTAL CUBIC FEET | TOTAL CORDS | | MINIMUM | MAXIMUM |
| 87 | 11,844 | 150 | 8.61% | 137 | 163 |
| TOTAL: | 11,844 | 150 | | 137 | 163 |

VDU TO PAYMENT UNIT

When a VDU is associated with more than one Payment Unit (PU), the VDU volumes are assigned to the PU based on acres of the VDU within the PU.

| VDU | VDU ACRES | PU | PU ACRES |
|---------------|------------|----|------------|
| 87 | 7.4 | 1 | 7.4 |
| TOTAL: | 7.4 | | 7.4 |

DESCRIPTION OF TIMBER BY PAYMENT UNIT (PU)

| PU | MARKET GROUP | PRODUCT | QUANTITY | UNIT | ACRES | ADVERTISE PRICE |
|--------|--------------|-----------|----------|-------|-------|-----------------|
| 1 | Red Pine | Sawtimber | 7.6 | MBF | 7.4 | \$5,293.40 |
| | Red Pine | Pulpwood | 135 | Cords | | |
| TOTAL: | | | 7.6 | MBF | | |
| TOTAL: | | | 135 | Cords | | |

Sale Specific Conditions & Requirements

Sale Name: PRD Pine

Sale Number: 61-008-22 Seq#: 1

1 - Sale Area

1.2 - Boundaries

1.2.1 - Painted boundaries (9/19)

The sale boundary and Payment Unit boundaries are marked and identified by red paint. Exterior sale boundary lines against state are marked with red paint. The painted boundary line trees are not Included Timber and are to be protected unless marked with orange paint.

2 - Timber Specifications

2.1 - Included Timber

2.1.3 - Cut tree marked unit(s) (12/08)

Within Payment Unit(s) 1, all trees are designated for cutting when marked with orange paint above and below stump height, regardless of merchantability.

2.2 - Utilization

2.2.3 - Stump heights (4/07)

Stump heights within the Sale Area shall not exceed 12 inches for trees greater than 10 inches DBH and 4 inches for trees smaller than 10 inches DBH.

2.2.6 - Roundwood operation required (3/21)

The skidding of whole trees or tree segments with limbs attached is prohibited within Payment Unit(s) 1. All products must be produced as roundwood and forwarded to existing roads or landing areas in final product length. Trees must be harvested with in-woods processor (feller bunching harvester will not be allow) to retain existing understory.

3 - Payments

3.4 - Damaged Timber

3.4.1 - Damaged timber (7/16)

General Condition and Requirement 3.4 Damaged Timber, defines liquidated damages for undesignated live merchantable trees which are cut or injured. In addition, extreme care should be taken to avoid damage to tree seedlings and saplings. Within the Sale Area, if more than 10% of the tree seedlings or saplings (1/4" to 4.5" DBH) within a specified portion of the Sale Area are damaged, liquidated damages will be assessed at \$200.00 per acre for all acreage within that specified portion of the Sale Area that was damaged.

No damage is acceptable to undesignated live merchantable trees. Within the Sale Area, if more than 5% of trees (> 4.5" DBH) within a specified area of the sale are damaged, liquidated damages will be assessed for all trees damaged. Rates will be in accordance with General Condition and Requirement 3.4 Damaged Timber.

4 - Transportation

4.1 - Construction

4.1.12 - No new roads (1/12)

No new roads will be permitted in Sale Area. All operations are limited to existing roads. Skid trails only will be allowed.

5 - Operations

5.2 - Conduct of Operations

5.2.1 - Slash

5.2.1.8 - Slash height (12/08)

No slash or tree tops may exceed 24 inches in height.

5.2.3 - Operating Restrictions

5.2.3.14 - heterobasidion root disease (HRD) (3/21)

This plantation is at risk of infection by the root rot fungus, *Heterobasidion irregulare*. To prevent the spread of this disease, cutting operations within Payment Unit(s) 1 are restricted to the period of January 1st through February 28th. Cutting may only occur outside this period with written permission of the Unit Manager or with the application of a preventative pesticide. Consultation with a forest health specialist will determine if cutting can occur prior to January 1 without pesticide application, dependent upon current and forecasted snow cover. Cellu-Treat and RotStop C are currently the only EPA registered products available in the United States for the control of *Heterobasidion*. Both products are a water-soluble powder that must be applied to the stump, in accordance with the product label. Dye must be added to these products to provide visible evidence of adequate coverage. Application of these pesticides requires licensing by the Michigan Department of Agriculture and Rural Development. All applicators are required to: provide to the Sale Administrator notification of application per requirements in 40 CFR 170.120; and document and provide to the Sale Administrator annually, by December 31 and prior to closure of sale, the volume of product used and acres treated.

5.2.29 - Shrub protection (1/20)

Do not cut or damage hawthorn, witch-hazel, or junberry. These woody-shrub plants are highly beneficial to various wildlife species.

5.4 - Soil Protection

5.4.1 - Rutting restriction, general (7/16)

Operations are to cease immediately if equipment and weather conditions result in rutting of roads and/or skid trails which is 12 inches or greater in depth and 50 feet in length. The Unit Manager or his/her representative may restrict hauling and/or skidding if ruts exceed the specified depth. With the Unit Manager or his/her representative's approval, the Purchaser may return to the area when the risk of rutting has decreased.



TIMBER SALE MAP

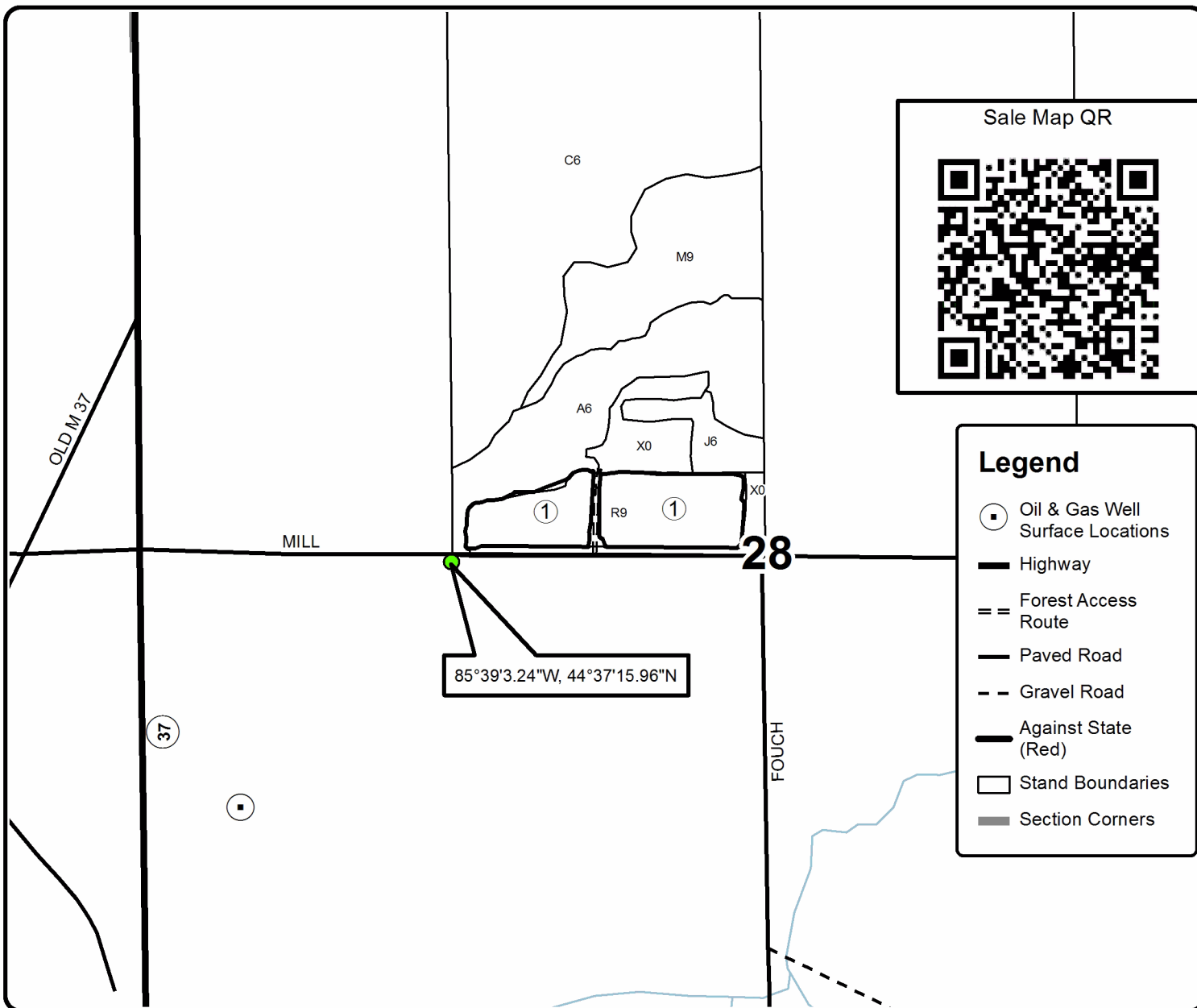
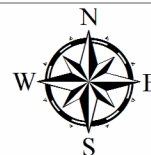
This information provided by authority of Part 525, 1994 PA 451, as amended.

| | | | | | |
|---|--------------------------|--|------------------|-----------|---------|
| Forest Management Unit Traverse City FMU | County Grand Traverse | Mapped By Patrick Cotant | Date 11/16/21 | Page 1 | of 1 |
| Township 26N | Range 11W | Section(s) and Subdivision(s) Section 28 - SENW | Scale 1:7,920 | | |

| Cover Type | | | | Density | |
|-------------------|----------------------|-------------------------|-------------------|-----------------------------|------------------------|
| A = Aspen | H = Hemlock | N = Marsh | U = Upland Brush | 0 = Non Stocked | 5 = Pole Timber Medium |
| B = Paper Birch | J = Jack Pine | O = Oak | UM = Upland Mixed | 1 = Seedling Sapling Poor | 6 = Pole Timber Well |
| C = Cedar | L = Lowland Brush | P = Lowland Poplar | V = Bog or Marsh | 2 = Seedling Sapling Medium | 7 = Saw Timber Poor |
| D = Treed Bog | LM = Lowland Mixed | Q = Mixed Swamp Conifer | W = White Pine | 3 = Seedling Sapling Well | 8 = Saw Timber Medium |
| E = Swamp Hdwoods | M = Mpl, Bch, Brch | R = Red Pine | X = Non Stocked | 4 = Pole Timber Poor | 9 = Saw Timber Well |
| F = Spruce Fir | MC = Mixed Conifer | S = Black Spruce | Z = Water | | |
| G = Grass | MD = Mixed Deciduous | T = Tamarack | | | |

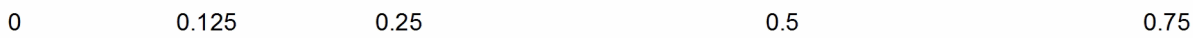
PU Acres
1 7.4

PRD Pine
Compartment 049
7.4 Acres



Legend

- Oil & Gas Well Surface Locations
- Highway
- Forest Access Route
- Paved Road
- Gravel Road
- Against State (Red)
- Stand Boundaries
- Section Corners



TIMBER SALE INFORMATION

Plowman Pine (61-011-22)

T28N, R14W, SEC. 35; T28N, R14W, SEC. 36.
Leelanau County (Advertised Price \$117,063.85)

SALE NOTE: All units of volume listed for this sale were estimated using the Inventory Manager computer program and the new Michigan taper model.

A recreation site such as a trail, pathway, or campground is within the sale area or the vicinity. Certain restrictions/specifications may be applicable including time restrictions.

A timber sale contract for this lump sum, sealed bid timber sale will be awarded to the responsible bidder offering the highest sealed bid price. All units of volume listed below were estimated using the Inventory Manager computer program and the new Michigan taper model. Bids must be at or above the following advertised price for each product and species:

| <u>PRODUCTS & SPECIES</u> | <u>ESTIMATED UNITS*</u> | <u>ADVERTISED PRICE</u> |
|-------------------------------|-------------------------|-------------------------|
| Sawtimber | | |
| Black Cherry | 3.1 MBF | \$ 149.00 / MBF |
| Jack Pine | 9.7 MBF | \$ 18.00 / MBF |
| Red Pine | 235.7 MBF | \$ 89.00 / MBF |
| Sugar Maple | 5.5 MBF | \$ 194.00 / MBF |
| White Pine | 10.3 MBF | \$ 39.00 / MBF |
| Pulpwood | | |
| Jack Pine | 330 Cords | \$ 9.70 / Cord |
| Misc. Species 1 | 311 Cords | \$ 1.10 / Cord |
| Mixed Hardwood | 229 Cords | \$ 14.65 / Cord |
| Quaking Aspen | 19 Cords | \$ 13.20 / Cord |
| Red Pine | 2,520 Cords | \$ 34.20 / Cord |
| White Pine | 46 Cords | \$ 14.10 / Cord |

* The total volume is statistically estimated within plus (+) or minus (-) 3.49 percent. There are an estimated 4,042 cords on this timber sale, plus or minus 141 cords at the 95% confidence level. The estimated units are final and not subject to adjustment. Prospective bidders are urged to examine this timber and to make their own estimates of quantity and quality.

BOND AND PAYMENT SCHEDULE:

1. A bond in the amount of \$5,853.00 to insure faithful performance of the conditions of the contract will be deposited by the successful bidder within 21 days of the sale award.
2. Cutting in any sale or unit without the required advance payment would be considered a trespass.
3. Total payment must be paid in advance or according to the following schedule :
 - (a) Ten percent (10%) of the sale value must be paid within 21 days of the sale award.
 - (b) The 10% down payment will be credited towards the first unit cut.
 - (c) Payment for each of the following units must be made before cutting begins in that unit:

| PAYMENT UNIT NUMBER | PERCENT OF TOTAL SALE VALUE |
|---------------------|-----------------------------|
| 01 | 32.7% |
| 02 | 15.1% |
| 03 | 11.6% |
| 04 | 1.9% |
| 05 | 30.2% |
| 06 | 2.4% |
| 07 | 6.1% |

4. If no cutting takes place, the 10% down payment will not be refunded.
5. Operations on the contract issued will terminate on 06/30/2024.

SALE STATISTICS

Volumes were calculated in cubic feet using the Michigan taper model. Cubic foot volume includes all wood inside bark for the product indicated. For display purposes, cubic feet were converted to cords and MBF using a simple conversion factor, e.g. 79 cubic feet per cord and 185 cubic feet per MBF. The cubic foot volumes are precise; the cords and MBF volumes are not. Cubic foot volume cannot be directly converted to cords or boards with precision.

SALE VOLUMES

The total estimated sale volume may not equal the sum of the species/products due to the nature of statistical calculations associated with double sampling methodology.

| VOLUME | | | STATISTICAL RANGE IN CORDS | |
|------------------|-------------|---------------|----------------------------|---------|
| TOTAL CUBIC FEET | TOTAL CORDS | PERCENT ERROR | MINIMUM | MAXIMUM |
| 319,296 | 4,042 | 3.49% | 3,900 | 4,183 |

VDU VOLUMES

A VDU is a Volume Determination Unit. Volumes and their associated statistics are calculated at the VDU level and summarized to the sale level. There is often a one to one relationship between a VDU and a Payment Unit, but not always, depending on the cruise design. Refer to the VDU TO PAYMENT UNIT table.

| | VOLUME | | | RANGE IN CORDS | |
|---------------|------------------|--------------|---------------|----------------|--------------|
| VDU | TOTAL CUBIC FEET | TOTAL CORDS | PERCENT ERROR | MINIMUM | MAXIMUM |
| 37 | 71,169 | 901 | 6.23% | 845 | 957 |
| 46 | 6,652 | 84 | 24.67% | 63 | 105 |
| 49 | 14,712 | 186 | 13.15% | 162 | 211 |
| 52 | 119,499 | 1,513 | 6.48% | 1,415 | 1,611 |
| 53 | 12,996 | 165 | 17.52% | 136 | 193 |
| 237 | 89,881 | 1,138 | 6.11% | 1,068 | 1,207 |
| TOTAL: | 314,908 | 3,986 | | 3,688 | 4,284 |

VDU TO PAYMENT UNIT

When a VDU is associated with more than one Payment Unit (PU), the VDU volumes are assigned to the PU based on acres of the VDU within the PU.

| VDU | VDU ACRES | PU | PU ACRES |
|---------------|--------------|----|--------------|
| 37 | 67.4 | 2 | 38.2 |
| | | 3 | 29.2 |
| 46 | 4.2 | 4 | 4.2 |
| 49 | 11.6 | 7 | 11.6 |
| 52 | 52.1 | 5 | 52.1 |
| 53 | 14.1 | 6 | 14.1 |
| 237 | 24.4 | 1 | 24.4 |
| TOTAL: | 173.8 | | 173.8 |

DESCRIPTION OF TIMBER BY PAYMENT UNIT (PU)

| PU | MARKET GROUP | PRODUCT | QUANTITY | UNIT | ACRES | ADVERTISE PRICE |
|---------------------|------------------------|------------------|----------|--------------|-------|-----------------|
| 1 | Red Pine | Sawtimber | 34.4 | MBF | 24.4 | \$38,311.55 |
| | Mixed Hardwood | Pulpwood | 67 | Cords | | |
| | <i>Black Cherry</i> | | 67 | <i>Cords</i> | | |
| | Red Pine | | 1,002 | Cords | | |
| 2 | Red Pine | Sawtimber | 11.9 | MBF | 38.2 | \$17,714.50 |
| | Red Pine | Pulpwood | 487 | Cords | | |
| 3 | Red Pine | Sawtimber | 9.1 | MBF | 29.2 | \$13,532.30 |
| | Red Pine | Pulpwood | 372 | Cords | | |
| 4 | Sugar Maple | Sawtimber | 5.5 | MBF | 4.2 | \$2,220.95 |
| | White Pine | | 10.3 | MBF | | |
| | Mixed Hardwood | Pulpwood | 9 | Cords | | |
| | <i>Black Cherry</i> | | 3 | <i>Cords</i> | | |
| | <i>Sugar Maple</i> | | 6 | <i>Cords</i> | | |
| | White Pine | | 44 | Cords | | |
| 5 | Black Cherry | Sawtimber | 3.1 | MBF | 52.1 | \$35,341.65 |
| | Jack Pine | | 9.7 | MBF | | |
| | Red Pine | | 140.3 | MBF | | |
| | Jack Pine | Pulpwood | 292 | Cords | | |
| | Misc. Species 1 | | 311 | Cords | | |
| | <i>Misc. Species 1</i> | <i>Sawtimber</i> | 4.9 | <i>MBF</i> | | |
| | <i>Misc. Species 1</i> | <i>Pulpwood</i> | 301 | <i>Cords</i> | | |
| | Mixed Hardwood | | 79 | Cords | | |
| | <i>Beech</i> | | 6 | <i>Cords</i> | | |
| | <i>Black Cherry</i> | | 13 | <i>Cords</i> | | |
| | <i>Sugar Maple</i> | | 60 | <i>Cords</i> | | |
| | Red Pine | | 523 | Cords | | |
| | 6 | Jack Pine | Pulpwood | 38 | | |
| Mixed Hardwood | | | 74 | Cords | | |
| <i>Black Cherry</i> | | | 43 | <i>Cords</i> | | |
| <i>Sugar Maple</i> | | | 31 | <i>Cords</i> | | |
| Quaking Aspen | | | 19 | Cords | | |
| Red Pine | | | 30 | Cords | | |
| White Pine | | | 2 | Cords | | |
| 7 | Red Pine | Sawtimber | 40.0 | MBF | 11.6 | \$7,185.20 |
| | Red Pine | Pulpwood | 106 | Cords | | |
| TOTAL: | | | 264.3 | MBF | | |
| TOTAL: | | | 3,455 | Cords | | |

Sale Specific Conditions & Requirements

Sale Name: Plowman Pine

Sale Number: 61-011-22 Seq#: 1

1 - Sale Area

1.2 - Boundaries

1.2.1 - Painted boundaries (9/19)

The sale boundary and Payment Unit boundaries are marked and identified by red and yellow paint. Exterior sale boundary lines against state land are marked with red paint. Interior Payment Unit boundaries are marked with yellow paint. Retention patches are marked with double red paint marks (Payment Unit 6 only); no harvesting activities may occur within these areas. The painted boundary line trees are not Included Timber and are to be protected unless marked with orange paint.

2 - Timber Specifications

2.1 - Included Timber

2.1.1 - Clearcut unit(s) with unmerchantable trees (6/14)

Within Payment Unit(s) 1, 5, and 6, cut all trees that are one (1) inch or more at DBH. In addition, within Payment Unit 5, all standing and fallen jack pine greater than 4 inches in diameter and greater than 4 feet in length must be utilized.

2.1.3 - Cut tree marked unit(s) (12/08)

Within Payment Unit(s) 4 and 7, all trees are designated for cutting when marked with orange paint above and below stump height, regardless of merchantability.

2.1.8 - Designated plantation row unit(s) (12/08)

Within Payment Unit(s) 2 and 3, all pine trees which meet minimum piece specifications in 2.2 Utilization, within designated plantation rows are designated for cutting. Designated plantation rows are every third row. Any other trees which must be cut to facilitate harvest of pine in designated rows must be left on site and lopped to within 3 feet of ground level.

2.1.11 - Description of timber note (2/04)

Note that "Misc. Species 1" is standing and fallen dead jack pine in Payment Unit 5.

2.2 - Utilization

2.2.2 - Chipping required (2/18)

Payment Units 1, 5, and 6 must be chip harvested to facilitate future management operations. The Purchaser has the option to produce sawlogs or pulpwood bolts, but the remaining portion of the trees must be chipped and hauled. This requirement includes all dead jack pine (standing or fallen) in Payment Unit 5 which is greater than 4 inches in diameter and greater than 4 feet in length. The requirement to retain approximately 1/6 to 1/3 of tree tops and limbs less than four inches in diameter is still applicable (G. C. & R. 2.2).

2.2.3 - Stump heights (4/07)

Stump heights within Payment Units 1, 5, and 6 shall not exceed 12 inches for trees greater than 10 inches at DBH and 4 inches for trees smaller than 10 inches at DBH. This is to facilitate future management operations.

2.2.4 - Skidding length (2/14)

Skidding of unlimbed tops or lengths over 17 feet is not permissible within Payment Units 2-4 and 7 unless approved by the Unit Manager or his/her representative.

3 - Payments

3.6 - Payment Unit Cutting Schedule

3.6.3 - Operating schedule (12/08)

Unless changed by written agreement, only 2 Payment Unit(s) may be operated at any one time. All contractual requirements on a Payment Unit shall be completed and accepted by the Unit Manager or his/her representative prior to the opening of an additional Payment Unit.

4 - Transportation

4.1 - Construction

4.1.3 - Slash and earthen piles (8/04)

Piles or windrows of earth along roads and landings that have been widened or constructed shall be leveled. Slash from road maintenance or construction, including stumps, shall be chipped, utilized, or otherwise removed from the sale.

4.1.12 - No new roads (1/12)

No new roads will be permitted in any Payment Unit. All operations are limited to existing roads. Skid trails only will be allowed.

4.2 - Maintenance

4.2.1 - Hauling restriction (12/08)

Hauling and decking is prohibited on the Shore to Shore riding/hiking trail, which is situated on a dirt road just south of the Sale Area, as shown on the Timber Sale Map. The restriction is to avoid conflicts with recreational users and to maintain the character of the trail.

5 - Operations

5.2 - Conduct of Operations

5.2.1 - Slash

5.2.1.8 - Slash height (12/08)

No slash or tree tops may exceed 24 inches in height.

5.2.1.12 - Slash for prescribed burning (1/05)

To facilitate prescribed burning, slash shall be moved at least 20 feet inside the boundary of Payment Unit 6 and at least 20 feet from retention areas.

5.2.3 - Operating Restrictions

5.2.3.3 - Bark slippage restriction (3/09)

Within Payment Unit(s) 4 and 7, unless changed by written agreement, cutting and skidding are not permitted during the period of April 15 to July 15. This restriction is because of bark slippage.

5.2.3.6 - Bark beetle restriction (12/08)

In the event drought creates a high risk of pine bark beetle infestation, pine is not to be cut during the period March 1 through July 1, unless all portions of trees greater than two inches in diameter are removed from the sale area, reduced to chips, or treated to the satisfaction of the Unit Manager or his/her representative, within fifteen days of being severed from the stump. Pine log decks, pulpwood piles and treetops that are piled for chipping in the fall or winter within a 1/4 mile of susceptible sites must be removed before March 15. Residual slash must not be placed in piles or rows and must be spread over the site for quick drying. The Department of Natural Resources will exercise this specification if the risk of damage warrants.

5.2.38 - No decking against live trees (2/04)

Cut products may not be decked against unmarked or designated leave trees.

5.2.40 - Pathway protection (10/10)

The Shore to Shore riding-hiking trail is shown on the Timber Sale Map. Do not cut trees or damage posts with blue pathway markers. Maintain a 20-foot-wide slash, debris, and rut free zone daily, using the pathway as the centerline. Do not run equipment down the pathway.

5.4 - Soil Protection

5.4.3 - Erosion control (12/08)

Skid trails or haul roads may require erosion control structures or berms per direction of the Unit Manager or his/her representative.

5.7 - Protection of Historical Sites

5.7.1 - Historical sites (7/12)

The Purchaser shall not cut live or dead trees or operate equipment within historical sites. Historical sites are within the grassy opening ("G" type) just southeast of the south part of Payment Unit 7. This area is marked with an "H" on the Timber Sale Map. The Purchaser shall protect historical sites from damage by the Purchaser's operations. If Purchaser's operations have cut or damaged historical sites through carelessness, the Purchaser shall pay \$300 as fixed, agreed and liquidated damages for each acre or part thereof cut or damaged.

6 - Safety and Fire Prevention

6.2 - Signing

6.2.3 - Recreational trail posting (10/20)

The Purchaser is responsible for posting and maintaining caution signs on the Shore to Shore Trail prior to beginning operations. The trail must be posted at appropriate distances from the Sale Area to warn of logging activity and truck traffic at both ends of the trail. Signs must be removed when harvest operations are suspended or completed. The Purchaser will provide these signs.

8 - Performance and Settlement

8.3 - Uncompleted or Terminated Contracts

8.3.1 - Completion of contract, chipping (1/16)

In addition to cutting, all chipping must be completed by the contract expiration date. If chipping has not been completed, an extension fee or damages may be charged per General Condition & Requirement 7.2 and 8.3.



| | |
|-------------|------|
| Sale Number | Year |
| 61-011 | 22 |

TIMBER SALE MAP

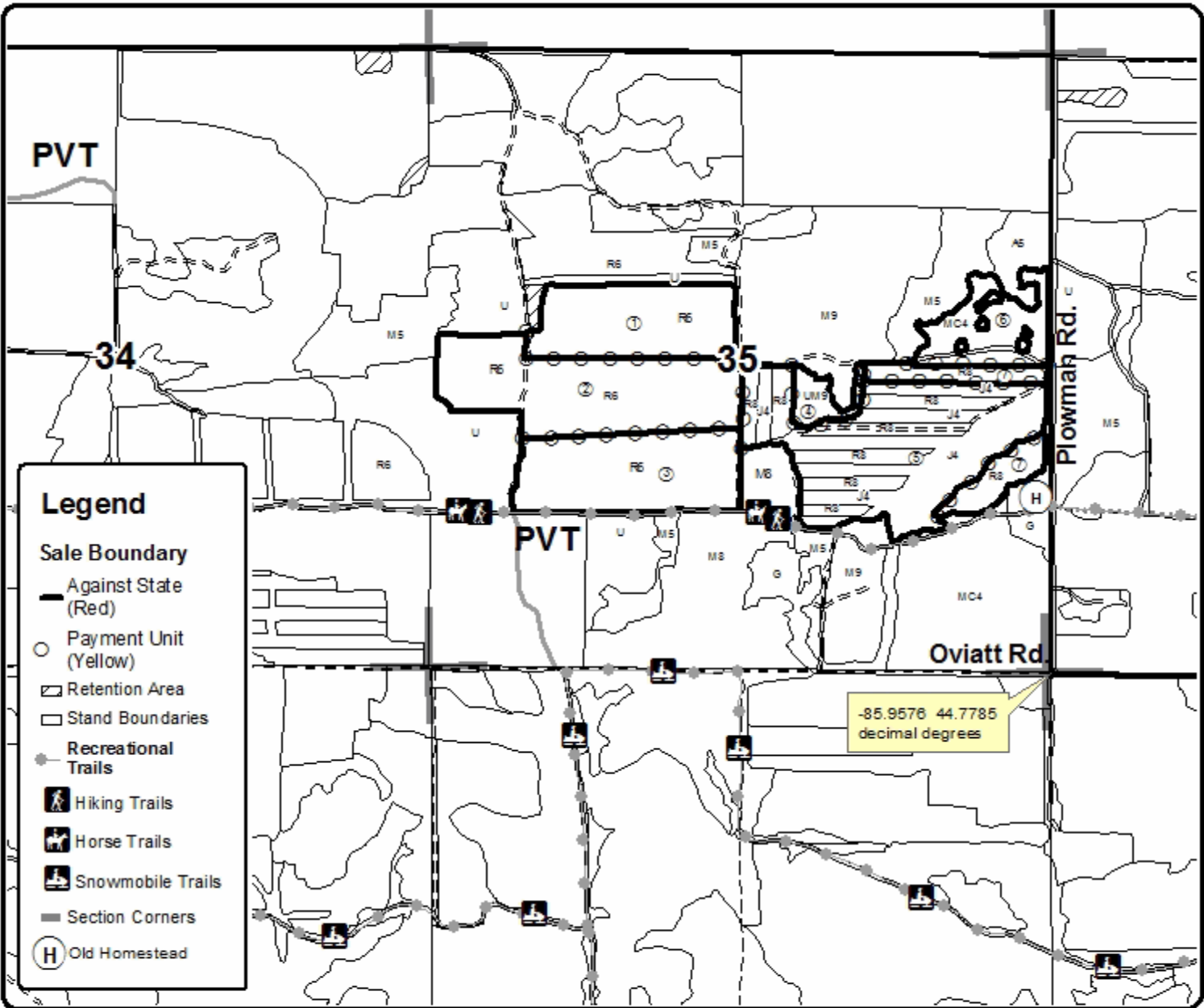
This information provided by authority of Part 525, 1994 PA 451 as amended.

| | | | | | |
|---|--------------------|--|--------------------|-----------|---------|
| Forest Management Unit Traverse City | County Leelanau | Mapped By Tim Webb | Date 12/22/2021 | Page 1 | of 1 |
| Township 28N | Range 14W | Section(s) and Subdivision(s) S. 35: S1/2NW,SENE,N1/2SW,SE; S. 36: SWNW | Scale 1:15,840 | | |

| Cover Type | | | | Density | |
|---------------------|----------------------|-------------------------|-------------------|----------------------------|------------------------|
| A = Aspen | H = Hemlock | N = Marsh | U = Upland Brush | 0 = Non Stocked | 5 = Pole Timber Medium |
| B = Paper Birch | J = Jack Pine | O = Oak | UM = Upland Mixed | 1 = Seeding Sapling Poor | 6 = Pole Timber Well |
| C = Cedar | L = Lowland Brush | P = Lowland Poplar | V = Bog or Marsh | 2 = Seeding Sapling Medium | 7 = Saw Timber Poor |
| D = Treed Bog | LM = Lowland Mixed | Q = Mixed Swamp Conifer | W = White Pine | 3 = Seeding Sapling Well | 8 = Saw Timber Medium |
| E = Swamp Hardwoods | M = Mpl. Ech. Birch | R = Red Pine | X = Non Stocked | 4 = Pole Timber Poor | 9 = Saw Timber Well |
| F = Spruce Fir | MC = Mixed Conifer | S = Black Spruce | Z = Water | | |
| G = Creas | MD = Mixed Deciduous | T = Tamarack | | | |

| PU | Acres | PU | Acres | PU | Acres |
|----|-------|----|-------|----|-------|
| 1 | 24.4 | 4 | 4.2 | 7 | 11.6 |
| 2 | 38.2 | 5 | 52.1 | | |
| 3 | 29.2 | 6 | 14.1 | | |

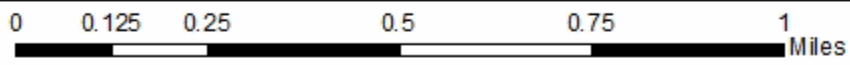
Plowman Pine
Compartment 61003
173.8 Acres



Legend

- Sale Boundary
 - Against State (Red)
- Payment Unit (Yellow)
- Retention Area
- Stand Boundaries
- Recreational Trails
 - Hiking Trails
 - Horse Trails
 - Snowmobile Trails
- Section Corners
- Old Homestead (H)

-85.9576 44.7785
decimal degrees





TIMBER SALE MAP

This information provided by authority of Part 525, 1994 PA 451 as amended.

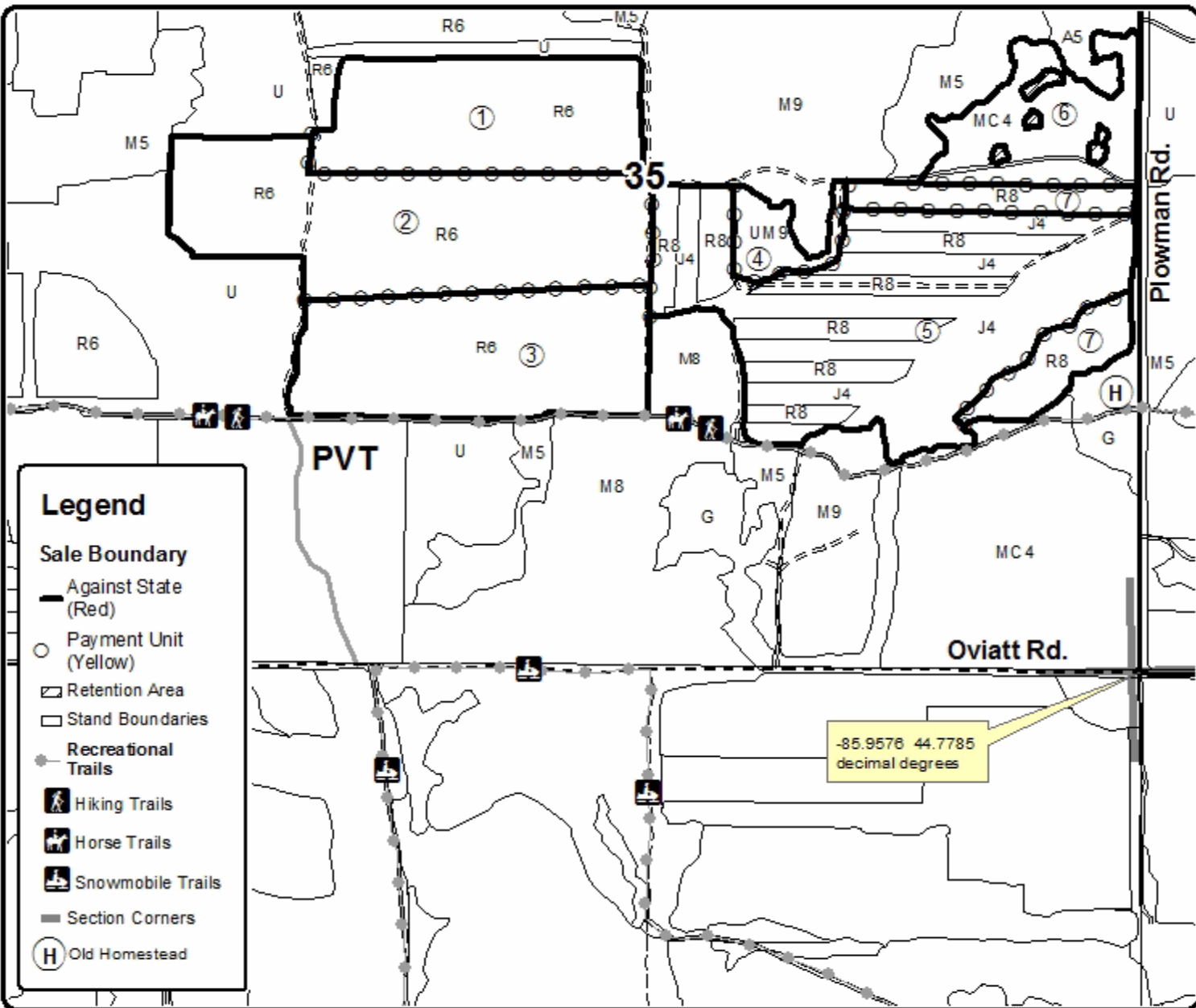
| | |
|-------------|------|
| Sale Number | Year |
| 61-011 | 22 |

| | | | | | |
|---|--------------------|--|--------------------|-----------|---------|
| Forest Management Unit Traverse City | County Leelanau | Mapped By Tim Webb | Date 12/22/2021 | Page 1 | of 1 |
| Township 28N | Range 14W | Section(s) and Subdivision(s) S. 35: S1/2NW,SENE,N1/2SW,SE; S. 36: SWNW | Scale 1:10,000 | | |

| Cover Type | | | | Density | |
|---------------------|----------------------|-------------------------|-------------------|----------------------------|------------------------|
| A = Aspen | H = Hemlock | N = Marsh | U = Upland Brush | 0 = Non Stocked | 5 = Pole Timber Medium |
| B = Paper Birch | J = Jack Pine | O = Oak | UM = Upland Mixed | 1 = Seeding Sapling Poor | 6 = Pole Timber Well |
| C = Cedar | L = Lowland Birch | P = Lowland Poplar | V = Bog or Marsh | 2 = Seeding Sapling Medium | 7 = Saw Timber Poor |
| D = Tread Bog | LM = Lowland Mixed | Q = Mixed Swamp Conifer | W = White Pine | 3 = Seeding Sapling Well | 8 = Saw Timber Medium |
| E = Swamp Hardwoods | M = Mpl. Ech. Birch | R = Red Pine | X = Non Stocked | 4 = Pole Timber Poor | 9 = Saw Timber Well |
| F = Spruce Fir | MC = Mixed Conifer | S = Black Spruce | Z = Water | | |
| G = Cress | MD = Mixed Deciduous | T = Tamarack | | | |

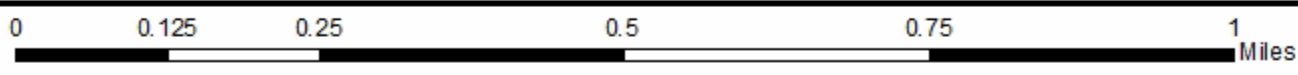
| PU | Acres | PU | Acres | PU | Acres |
|----|-------|----|-------|----|-------|
| 1 | 24.4 | 4 | 4.2 | 7 | 11.6 |
| 2 | 38.2 | 5 | 52.1 | | |
| 3 | 29.2 | 6 | 14.1 | | |

Plowman Pine
Compartment 61003
173.8 Acres



Legend

- Sale Boundary**
 - Against State (Red)
- Payment Unit (Yellow)
- Retention Area
- Stand Boundaries
- Recreational Trails
 - Hiking Trails
 - Horse Trails
 - Snowmobile Trails
- Section Corners
- Old Homestead (H)



TIMBER SALE INFORMATION

Eleventh Hour Harvest (61-072-21)
T25N, R14W, SEC. 20; T25N, R14W, SEC. 21.
Benzie County (Advertised Price \$25,836.90)

SALE NOTE: All units of volume listed for this sale were estimated using the Inventory Manager computer program and the new Michigan taper model.

Advanced Sugar maple saplings and poles exists in Payment Unit 1 and the goal is to protect these trees from logging activity damage as much as possible.

A recreation site such as a trail, pathway, or campground is within the sale area or the vicinity. Certain restrictions/specifications may be applicable including time restrictions.

A timber sale contract for this lump sum, sealed bid timber sale will be awarded to the responsible bidder offering the highest sealed bid price. All units of volume listed below were estimated using the Inventory Manager computer program and the new Michigan taper model. Bids must be at or above the following advertised price for each product and species:

| <u>PRODUCTS & SPECIES</u> | <u>ESTIMATED UNITS*</u> | <u>ADVERTISED PRICE</u> |
|-------------------------------|-------------------------|-------------------------|
| Sawtimber | | |
| B. T. Aspen | 2.0 MBF | \$ 96.00 / MBF |
| Basswood | 3.0 MBF | \$ 84.00 / MBF |
| Black Cherry | 20.6 MBF | \$ 149.00 / MBF |
| Red Maple | 32.0 MBF | \$ 108.00 / MBF |
| Red Pine | 35.5 MBF | \$ 89.00 / MBF |
| Sugar Maple | 46.8 MBF | \$ 194.00 / MBF |
| White Pine | 23.0 MBF | \$ 39.00 / MBF |
| Pulpwood | | |
| B. T. Aspen | 25 Cords | \$ 13.20 / Cord |
| Basswood | 3 Cords | \$ 14.40 / Cord |
| Black Cherry | 30 Cords | \$ 14.65 / Cord |
| Red Maple | 36 Cords | \$ 14.65 / Cord |
| Red Pine | 82 Cords | \$ 34.20 / Cord |
| Sugar Maple | 66 Cords | \$ 14.65 / Cord |
| White Pine | 44 Cords | \$ 14.10 / Cord |

* The total volume is statistically estimated within plus (+) or minus (-) 13.86 percent. There are an estimated 648 cords on this timber sale, plus or minus 90 cords at the 95% confidence level. The estimated units are final and not subject to adjustment. Prospective bidders are urged to examine this timber and to make their own estimates of quantity and quality.

BOND AND PAYMENT SCHEDULE:

1. A bond in the amount of \$1,292.00 to insure faithful performance of the conditions of the contract will be deposited by the successful bidder within 21 days of the sale award.
2. Cutting in any sale or unit without the required advance payment would be considered a trespass.
3. Total payment must be paid in advance or according to the following schedule :
 - (a) Ten percent (10%) of the sale value must be paid within 21 days of the sale award.
 - (b) The 10% down payment will be credited towards the first unit cut.
 - (c) Payment for each of the following units must be made before cutting begins in that unit:

| PAYMENT UNIT NUMBER | PERCENT OF TOTAL SALE VALUE |
|---------------------|-----------------------------|
| 01 | 92.2% |
| 02 | 7.8% |
4. If no cutting takes place, the 10% down payment will not be refunded.
5. Operations on the contract issued will terminate on 06/30/2024.

SALE STATISTICS

Volumes were calculated in cubic feet using the Michigan taper model. Cubic foot volume includes all wood inside bark for the product indicated. For display purposes, cubic feet were converted to cords and MBF using a simple conversion factor, e.g. 79 cubic feet per cord and 185 cubic feet per MBF. The cubic foot volumes are precise; the cords and MBF volumes are not. Cubic foot volume cannot be directly converted to cords or boards with precision.

SALE VOLUMES

The total estimated sale volume may not equal the sum of the species/products due to the nature of statistical calculations associated with double sampling methodology.

| VOLUME | | | STATISTICAL RANGE IN CORDS | |
|------------------|-------------|---------------|----------------------------|---------|
| TOTAL CUBIC FEET | TOTAL CORDS | PERCENT ERROR | MINIMUM | MAXIMUM |
| 51,185 | 648 | 13.86% | 558 | 738 |

VDU VOLUMES

A VDU is a Volume Determination Unit. Volumes and their associated statistics are calculated at the VDU level and summarized to the sale level. There is often a one to one relationship between a VDU and a Payment Unit, but not always, depending on the cruise design. Refer to the VDU TO PAYMENT UNIT table.

| | VOLUME | | | RANGE IN CORDS | |
|---------------|------------------|-------------|---------------|----------------|------------|
| VDU | TOTAL CUBIC FEET | TOTAL CORDS | PERCENT ERROR | MINIMUM | MAXIMUM |
| 118 | 19,968 | 253 | 16.90% | 210 | 295 |
| 121 | 24,117 | 305 | 22.86% | 235 | 375 |
| 125 | 4,211 | 53 | 40.82% | 32 | 75 |
| TOTAL: | 48,297 | 611 | | 477 | 746 |

VDU TO PAYMENT UNIT

When a VDU is associated with more than one Payment Unit (PU), the VDU volumes are assigned to the PU based on acres of the VDU within the PU.

| VDU | VDU ACRES | PU | PU ACRES |
|---------------|-------------|----|-------------|
| 118 | 9.7 | 1 | 9.7 |
| 121 | 12.4 | 1 | 12.4 |
| 125 | 4.4 | 2 | 4.4 |
| TOTAL: | 26.5 | | 26.5 |

DESCRIPTION OF TIMBER BY PAYMENT UNIT (PU)

| PU | MARKET GROUP | PRODUCT | QUANTITY | UNIT | ACRES | ADVERTISE PRICE | | | |
|--------------|--------------|--------------|----------|-----------|-------|-----------------|-------|-----|-----|
| 1 | B. T. Aspen | Sawtimber | 2.0 | MBF | 22.1 | \$23,832.50 | | | |
| | Basswood | | 3.0 | MBF | | | | | |
| | Black Cherry | | 10.9 | MBF | | | | | |
| | Red Maple | | 30.8 | MBF | | | | | |
| | Red Pine | | 35.5 | MBF | | | | | |
| | Sugar Maple | | 46.8 | MBF | | | | | |
| | White Pine | | 23.0 | MBF | | | | | |
| | B. T. Aspen | | Pulpwood | 8 | | | Cords | | |
| | Basswood | 3 | | Cords | | | | | |
| | Black Cherry | 19 | | Cords | | | | | |
| | Red Maple | 34 | | Cords | | | | | |
| | Red Pine | 82 | | Cords | | | | | |
| | Sugar Maple | 65 | | Cords | | | | | |
| | White Pine | 44 | | Cords | | | | | |
| | 2 | Black Cherry | | Sawtimber | | | 9.7 | MBF | 4.4 |
| | | Red Maple | 1.2 | | | | MBF | | |
| B. T. Aspen | | Pulpwood | 17 | Cords | | | | | |
| Black Cherry | | | 11 | Cords | | | | | |
| Red Maple | | | 2 | Cords | | | | | |
| Sugar Maple | | | 1 | Cords | | | | | |
| | | | | | | | | | |
| TOTAL: | | | 162.9 | MBF | | | | | |
| TOTAL: | | | 286 | Cords | | | | | |

Sale Specific Conditions & Requirements

Sale Name: Eleventh Hour Harvest

Sale Number: 61-072-21 Seq#: 1

1 - Sale Area

1.2 - Boundaries

1.2.1 - Painted boundaries (9/19)

The sale boundary and Payment Unit boundaries are marked and identified by red and paint. Exterior sale boundary lines against state are marked with red paint. The painted boundary line trees are not Included Timber and are to be protected.

2 - Timber Specifications

2.1 - Included Timber

2.1.4 - Designated timber unit(s) (6/17)

Within Payment Unit(s) 2, all aspen, red maple, cherry, beech, ironwood trees are designated for cutting regardless of merchantability.

2.1.7 - Leave tree marked unit(s) (6/14)

Within Payment Unit(s) 1, all aspen, red maple, cherry, beech, ironwood, red pine, and jack pine trees, regardless of merchantability are designated for cutting. Also, cut all sugar maple trees that are seven (7) inches or more at DBH. Do not cut any trees marked with green paint above and below stump height.

2.2 - Utilization

2.2.3 - Stump heights (4/07)

Stump heights within the Sale Area shall not exceed 12 inches for trees greater than 10 inches at DBH and 4 inches for trees smaller than 10 inches at DBH.

4 - Transportation

4.1 - Construction

4.1.3 - Slash and earthen piles (8/04)

Piles or windrows of earth along roads and landings that have been widened or constructed shall be leveled. Slash from road maintenance or construction, including stumps, shall be dispersed throughout the sale, chipped, utilized, or otherwise removed from the sale as agreed with the DNR sale administrator.

5 - Operations

5.2 - Conduct of Operations

5.2.1 - Slash

5.2.1.8 - Slash height (12/08)

No slash or tree tops may exceed 24 inches in height.

5.2.3 - Operating Restrictions

5.2.3.3 - Bark slippage restriction (3/09)

Within Payment Unit(s) 1, unless changed by written agreement, cutting and skidding are not permitted during the period of April 15 to July 15. This restriction is because of bark slippage.

5.2.3.6 - Bark beetle restriction (12/08)

In the event drought creates a high risk of pine bark beetle infestation, pine is not to be cut during the period March 1 through July 1, unless all portions of trees greater than two inches in diameter are removed from the sale area, reduced to chips, or treated to the satisfaction of the Unit Manager or his/her representative, within fifteen days of being severed from the stump. Pine log decks, pulpwood piles and treetops that are piled for chipping in the fall or winter within a 1/4 mile of susceptible sites must be removed before March 15. Residual slash must not be placed in piles or rows and must be spread over the site for quick drying. The Department of Natural Resources will exercise this specification if the risk

of damage warrants.

5.2.4 - Dead and Down Creation

5.2.4.4 - Dead and down creation, grouse (6/18)

To encourage grouse and other wildlife, in Payment Unit(s) 1 and 2 leave one, 12" diameter or larger log-length (8 foot minimum) piece on the ground for every 2 acres, preferably a hardwood species such as maple or cherry. These trees will be evenly scattered throughout the Payment Unit, preferably at least two chains from any roads, two-tracks, or trails open to vehicles. This can be an unmerchantable piece or a full tree.

5.2.22 - Operating Caution

5.2.22.1 - Operating caution (6/11)

It is recommended, but not required, that within Payment Unit(s) 2, cutting, skidding, and hauling occur during dry summer or frozen winter conditions. The reason for the recommendation is due to potential lowland wet soil conditions

5.2.38 - No decking against live trees (2/04)

Cut products may not be decked against unmarked or designated leave trees.

5.2.41 - Snowmobile trail protection (9/11)

The Betsie River snowmobile trail is shown on the Timber Sale Map. Do not cut or damage posts with orange trail markers or traffic control signs. If the trail is used, it must be maintained and restored to a condition equal to or better than before the sale. If the trail is used for hauling, it must be graded to the satisfaction of the Unit Manager or his/her representative prior to December 1. If the trail road is to be used for hauling during the snowmobile season, then a snow-covered base must be left on the trail. Maintain a 20-foot-wide slash, debris, and rut free zone daily using the snowmobile trail as the centerline. No decking of forest products will be permitted along the snowmobile trail. All stumps within 20 feet of the snowmobile trail must be cut at ground level. In addition, any trees cut within 5 feet of the trail must have the stumps removed and be disposed of according to the direction of the Unit Manager or his/her representative.

5.4 - Soil Protection

5.4.1 - Rutting restriction, general (7/16)

Operations are to cease immediately if equipment and weather conditions result in rutting of roads and/or skid trails which is 12 inches or greater in depth and 50 feet in length. The Unit Manager or his/her representative may restrict hauling and/or skidding if ruts exceed the specified depth. With the Unit Manager or his/her representative's approval, the Purchaser may return to the area when the risk of rutting has decreased.

6 - Safety and Fire Prevention

6.2 - Signing

6.2.2 - Snowmobile trail posting (10/20)

The Purchaser is responsible for posting and maintaining caution signs on Betsie River Snowmobile Trail prior to beginning operations during the snowmobile season (approximately December 1 to March 31). The trail must be posted at appropriate distances from the Sale Area to warn of logging activity and truck traffic. Signs must be removed when harvest operations are suspended or completed. The Purchaser will provide these signs.



| | |
|-------------|------|
| Sale Number | Year |
| 61 - 072 | 21 |

TIMBER SALE MAP

This information provided by authority of Part 525, 1994 PA 451, as amended.

| | | | | | |
|---|------------------|---|--------------------|-----------|---------|
| Forest Management Unit Traverse City | County Benzie | Mapped By Craig Allen | Date 09/30/2021 | Page 1 | of 1 |
| Township 25N | Range 14W | Section(s) and Subdivision(s) Sec.20; NENE Sec.21; N1/2NW, NWNE | Scale 1:11,880 | | |

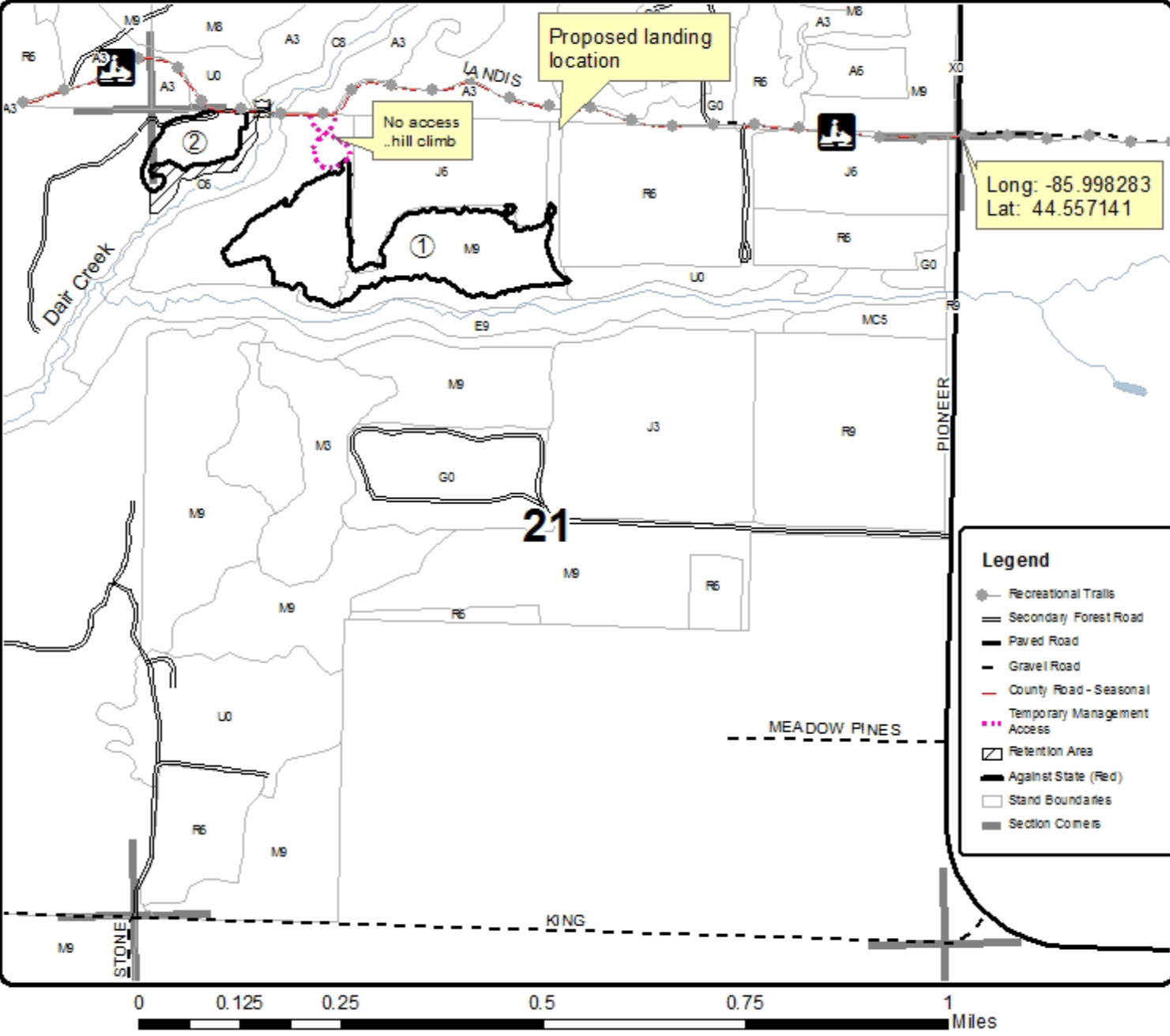
| Cover Type | | | | Density | |
|---------------------|----------------------|-------------------------|-------------------|----------------------------|------------------------|
| A = Aspen | H = Hemlock | N = Marsh | U = Upland Brush | 0 = Non Stocked | 5 = Pole Timber Medium |
| B = Paper Birch | J = Jack Pine | O = Oak | UM = Upland Mixed | 1 = Seeding Sapling Poor | 6 = Pole Timber Well |
| C = Cedar | L = Lowland Brush | P = Lowland Poplar | V = Bog or Marsh | 2 = Seeding Sapling Medium | 7 = Saw Timber Poor |
| D = Treed Bog | LM = Lowland Mixed | Q = Mixed Swamp Conifer | W = White Pine | 3 = Seeding Sapling Well | 8 = Saw Timber Medium |
| E = Swamp Hardwoods | M = Mpl. Ech. Birch | R = Red Pine | X = Non Stocked | 4 = Pole Timber Poor | 9 = Saw Timber Well |
| F = Spruce Fir | MC = Mixed Conifer | S = Black Spruce | Z = Water | | |
| G = Creas | MD = Mixed Deciduous | T = Tamarack | | | |

| PU | Acres |
|----|-------|
| 1 | 22.1 |
| 2 | 4.4 |

Eleventh Hour Harvest

Compartment 28

26.5 Acres





TIMBER SALE MAP

This information provided by authority of Part 525, 1994 PA 451 as amended.

| | |
|-------------|------|
| Sale Number | Year |
| 61 - 072 | 21 |

| | | | | | |
|---|------------------|---|--------------------|-----------|---------|
| Forest Management Unit Traverse City | County Benzie | Mapped By Craig Allen | Date 09/30/2021 | Page 1 | of 1 |
| Township 25N | Range 14W | Section(s) and Subdivision(s) Sec.20; NENE Sec.21; N1/2NW, NWNE | Scale 1:15,840 | | |

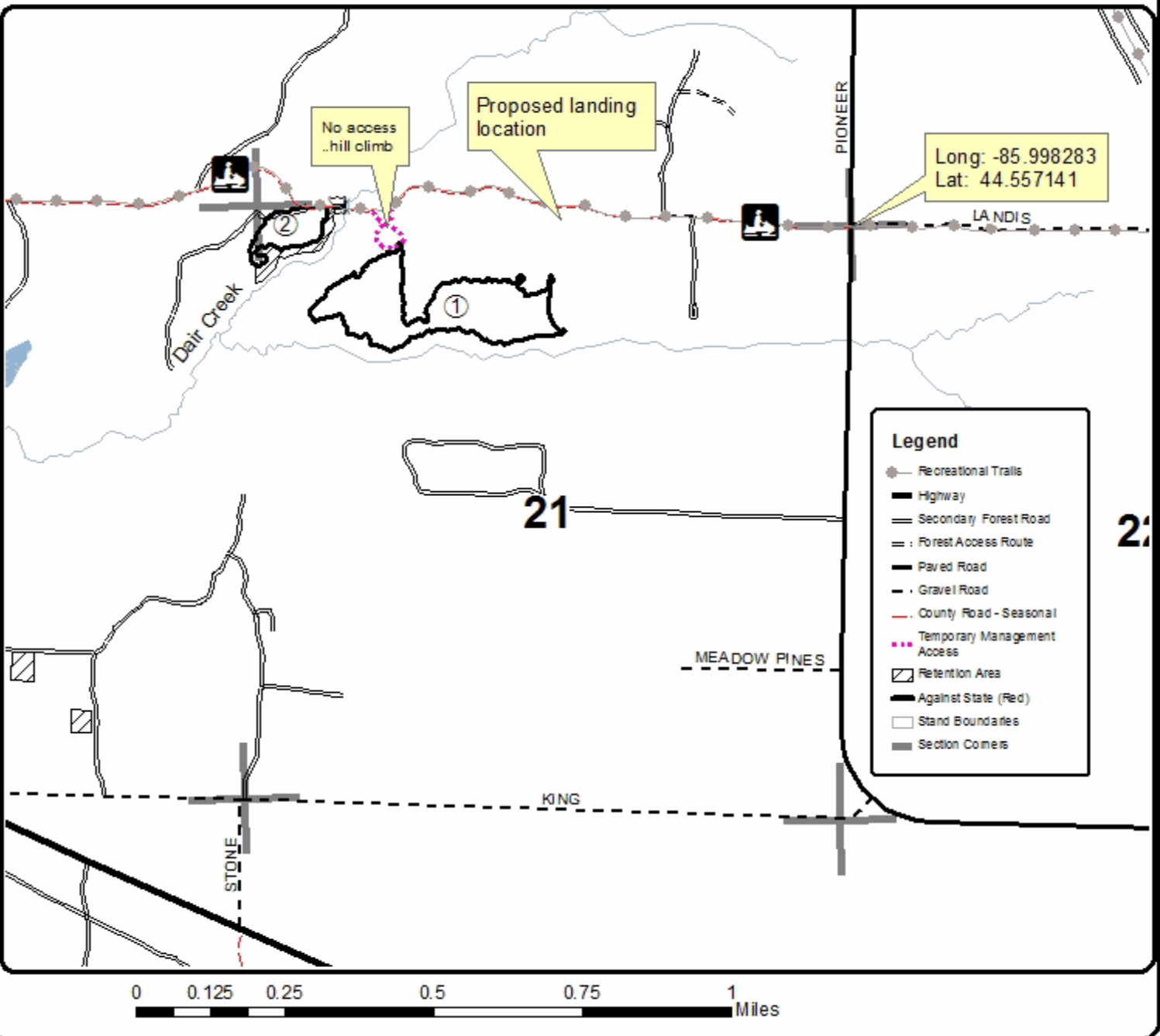
| Cover Type | | | | Density | |
|---------------------|----------------------|-------------------------|-------------------|----------------------------|------------------------|
| A = Aspen | H = Hemlock | N = Marsh | U = Upland Brush | 0 = Non Stocked | 5 = Pole Timber Medium |
| B = Paper Birch | J = Jack Pine | O = Oak | UM = Upland Mixed | 1 = Seeding Sapling Poor | 6 = Pole Timber Well |
| C = Cedar | L = Lowland Brush | P = Lowland Poplar | V = Bog or Marsh | 2 = Seeding Sapling Medium | 7 = Saw Timber Poor |
| D = Tread Bog | LM = Lowland Mixed | Q = Mixed Swamp Conifer | W = White Pine | 3 = Seeding Sapling Well | 8 = Saw Timber Medium |
| E = Swamp Hardwoods | M = Mpl. Ech. Birch | R = Red Pine | X = Non Stocked | 4 = Pole Timber Poor | 9 = Saw Timber Well |
| F = Spruce Fir | MC = Mixed Conifer | S = Black Spruce | Z = Water | | |
| G = Cress | MD = Mixed Deciduous | T = Tamarack | | | |

| PU | Acres |
|----|-------|
| 1 | 22.1 |
| 2 | 4.4 |

Eleventh Hour Harvest

Compartment 28

26.5 Acres



Eleventh Hour Harvest (61-072-21)
T25N, R14W, SEC. 20; T25N, R14W, SEC. 21; Benzie COUNTY

In response to the notice of sale to be held 4:00 p.m. (local time) on April 14, 2022, I am hereby submitting my sealed bid (firm offer) for the following forest products to be cut. Bids for individual species must be at or above the advertised price. All non-responsive bid forms may be rejected.

| <u>PRODUCTS & SPECIES</u> | <u>ESTIMATED VOLUME*</u> | <u>ADVERTISED PRICE</u> | <u>BID PRICE/UNIT</u> |
|-------------------------------|--------------------------|-------------------------|-----------------------|
| Sawtimber | | | |
| B. T. Aspen | 2.0 MBF | \$ 96.00/MBF | \$ _____ |
| Basswood | 3.0 MBF | \$ 84.00/MBF | \$ _____ |
| Black Cherry | 20.6 MBF | \$ 149.00/MBF | \$ _____ |
| Red Maple | 32.0 MBF | \$ 108.00/MBF | \$ _____ |
| Red Pine | 35.5 MBF | \$ 89.00/MBF | \$ _____ |
| Sugar Maple | 46.8 MBF | \$ 194.00/MBF | \$ _____ |
| White Pine | 23.0 MBF | \$ 39.00/MBF | \$ _____ |
| Pulpwood | | | |
| B. T. Aspen | 25 Cords | \$ 13.20/Cord | \$ _____ |
| Basswood | 3 Cords | \$ 14.40/Cord | \$ _____ |
| Black Cherry | 30 Cords | \$ 14.65/Cord | \$ _____ |
| Red Maple | 36 Cords | \$ 14.65/Cord | \$ _____ |
| Red Pine | 82 Cords | \$ 34.20/Cord | \$ _____ |
| Sugar Maple | 66 Cords | \$ 14.65/Cord | \$ _____ |
| White Pine | 44 Cords | \$ 14.10/Cord | \$ _____ |

*The volumes are statistically estimated within plus (+) or minus (-) 13.86 percent at 95% confidence level. These estimated volumes are final and not subject to adjustment. Prospective bidders are urged to examine this timber and to make their own estimates of quantity and quality.

I understand that any or all bids may be rejected. All bids must be signed and all bid items must be bid or the bid form may be rejected. I also understand that consideration and awarding a contract will be based upon my past performance and ability to complete the contract based upon equipment and staffing subject to my control.

FEDERAL ID: _____ or SOCIAL SECURITY NUMBER: _____

Company or individual bidding: _____

Company representative's name: _____

Address: _____

City: _____ State: _____ Zip: _____

IF AVAILABLE, PLEASE PLACE THE PERSONALIZED LABEL FROM YOUR PROSPECTUS IN THE ABOVE BOX.

Individual or company representative's signature: _____ Date: _____

Phone number : _____ Email (optional): _____

THE WINNING BIDDER MUST COMPLETE THE VERIFICATION OF WORKER'S DISABILITY COMPENSATION ACT COMPLIANCE (ON REVERSE SIDE IF DOUBLE SIDED) WITHIN 21 DAYS OF SALE AWARD DATE



| | |
|----------------------------------|--|
| FOR DEPARTMENT USE ONLY | |
| Sale Number (XX - XXX - XX - XX) | |
| Forest Management Unit: | |

TIMBER SALE VERIFICATION OF WORKER'S DISABILITY COMPENSATION ACT COMPLIANCE

As required by Act 317, P.A. 1969 (Worker's Compensation) and
Part 5 of Act 451 of 1994, as amended.

VERIFICATION OF WORKER'S DISABILITY COMPENSATION ACT COMPLIANCE

- This verification must be completed and submitted within 21 days of contract award and prior to the issuance of the timber sale contract.
- In addition, if boxes 2B or 2C are checked, then Notice of Exclusion or Certificate of Insurance must be submitted within twenty-one (21) days of the contract award and prior to the issuance of the timber sale contract.
- All information must be typed or printed except for written signatures.

Please Check Appropriate Categories:

1. My business is organized as (you **must** check one of the boxes below):
 - A. Sole Proprietorship (individual)
 - B. Partnership
 - C. Corporation
2. You **must** check one of the boxes below:
 - A. I certify my business is a sole proprietorship and it has no employees but the sole proprietor. I am not subject to the Worker's Compensation Laws.
 - B. I certify my business has satisfied its obligation to the Worker's Compensation Act through the use of an approved Notice of Exclusion (BWC-337, Rev. 5/96). I will provide a copy of the Notice of Exclusion within 21 days of the contract award. (For questions or a copy of the BWC-337, please call the Worker's Compensation Bureau at 517-322-1195).
 - C. I certify my business has a Worker's Compensation Policy. I will provide an original Certificate of Insurance within twenty-one (21) days of the contract award.
3. If you have checked item 2(A) or 2(B), you **must** indicate the number of **both** full-time and part-time employees, other than yourself, including family members and active partners (if none, you must enter "0").

_____ Full-time Employees

_____ Part-time Employees

| | | | |
|------------------|-------|-------------------------------------|--|
| Name of Business | | Federal ID (or) Social Security No. | |
| Address | | Telephone () | |
| City | State | ZIP | |

I hereby certify that the above information is true and correct. I agree to notify the Michigan DNR of any changes that occur in factors affecting my coverage during any of my present and future operations.

Signature of Owner or Authorized Representative

Title

Date

Please complete the "SEALED BID" information on the next page

All In Red Pine (61-001-22)
T28N, R14W, SEC. 36; Leelanau COUNTY

In response to the notice of sale to be held 4:00 p.m. (local time) on April 14, 2022, I am hereby submitting my sealed bid (firm offer) for the following forest products to be cut. Bids for individual species must be at or above the advertised price. All non-responsive bid forms may be rejected.

| <u>PRODUCTS & SPECIES</u> | <u>ESTIMATED VOLUME*</u> | <u>ADVERTISED PRICE</u> | <u>BID PRICE/UNIT</u> |
|-------------------------------|--------------------------|-------------------------|-----------------------|
| Sawtimber | | | |
| Red Pine | 7.7 MBF | \$ 89.00/MBF | \$ _____ |
| Pulpwood | | | |
| Austrian Pine | 4 Cords | \$ 9.20/Cord | \$ _____ |
| Jack Pine | 45 Cords | \$ 9.70/Cord | \$ _____ |
| Red Pine | 668 Cords | \$ 34.20/Cord | \$ _____ |

*The volumes are statistically estimated within plus (+) or minus (-) 7.68 percent at 95% confidence level. These estimated volumes are final and not subject to adjustment. Prospective bidders are urged to examine this timber and to make their own estimates of quantity and quality.

I understand that any or all bids may be rejected. All bids must be signed and all bid items must be bid or the bid form may be rejected. I also understand that consideration and awarding a contract will be based upon my past performance and ability to complete the contract based upon equipment and staffing subject to my control.

FEDERAL ID: _____ - _____ or SOCIAL SECURITY NUMBER: _____ - _____ - _____

Company or individual bidding: _____

Company representative's name: _____

Address: _____

City: _____ State: _____ Zip: _____

IF AVAILABLE, PLEASE PLACE THE PERSONALIZED LABEL FROM YOUR PROSPECTUS IN THE ABOVE BOX.

Individual or company representative's signature: _____ Date: _____

Phone number : _____ Email (optional): _____

THE WINNING BIDDER MUST COMPLETE THE VERIFICATION OF WORKER'S DISABILITY COMPENSATION ACT COMPLIANCE (ON REVERSE SIDE IF DOUBLE SIDED) WITHIN 21 DAYS OF SALE AWARD DATE



| | |
|----------------------------------|--|
| FOR DEPARTMENT USE ONLY | |
| Sale Number (XX - XXX - XX - XX) | |
| Forest Management Unit: | |

TIMBER SALE VERIFICATION OF WORKER'S DISABILITY COMPENSATION ACT COMPLIANCE

As required by Act 317, P.A. 1969 (Worker's Compensation) and
Part 5 of Act 451 of 1994, as amended.

VERIFICATION OF WORKER'S DISABILITY COMPENSATION ACT COMPLIANCE

- This verification must be completed and submitted within 21 days of contract award and prior to the issuance of the timber sale contract.
- In addition, if boxes 2B or 2C are checked, then Notice of Exclusion or Certificate of Insurance must be submitted within twenty-one (21) days of the contract award and prior to the issuance of the timber sale contract.
- All information must be typed or printed except for written signatures.

Please Check Appropriate Categories:

1. My business is organized as (you **must** check one of the boxes below):
 - A. Sole Proprietorship (individual)
 - B. Partnership
 - C. Corporation
2. You **must** check one of the boxes below:
 - A. I certify my business is a sole proprietorship and it has no employees but the sole proprietor. I am not subject to the Worker's Compensation Laws.
 - B. I certify my business has satisfied its obligation to the Worker's Compensation Act through the use of an approved Notice of Exclusion (BWC-337, Rev. 5/96). I will provide a copy of the Notice of Exclusion within 21 days of the contract award. (For questions or a copy of the BWC-337, please call the Worker's Compensation Bureau at 517-322-1195).
 - C. I certify my business has a Worker's Compensation Policy. I will provide an original Certificate of Insurance within twenty-one (21) days of the contract award.
3. If you have checked item 2(A) or 2(B), you **must** indicate the number of **both** full-time and part-time employees, other than yourself, including family members and active partners (if none, you must enter "0").

_____ Full-time Employees

_____ Part-time Employees

| | | | |
|------------------|-------|-------------------------------------|--|
| Name of Business | | Federal ID (or) Social Security No. | |
| Address | | Telephone () | |
| City | State | ZIP | |

I hereby certify that the above information is true and correct. I agree to notify the Michigan DNR of any changes that occur in factors affecting my coverage during any of my present and future operations.

Signature of Owner or Authorized Representative

Title

Date

Please complete the "SEALED BID" information on the next page

PRD Pine (61-008-22)
T26N, R11W, SEC. 28; Grand Traverse COUNTY

In response to the notice of sale to be held 4:00 p.m. (local time) on April 14, 2022, I am hereby submitting my sealed bid (firm offer) for the following forest products to be cut. Bids for individual species must be at or above the advertised price. All non-responsive bid forms may be rejected.

| <u>PRODUCTS & SPECIES</u> | <u>ESTIMATED VOLUME*</u> | <u>ADVERTISED PRICE</u> | <u>BID PRICE/UNIT</u> |
|-------------------------------|--------------------------|-------------------------|-----------------------|
| Sawtimber | | | |
| Red Pine | 7.6 MBF | \$ 89.00/MBF | \$ _____ |
| Pulpwood | | | |
| Red Pine | 135 Cords | \$ 34.20/Cord | \$ _____ |

*The volumes are statistically estimated within plus (+) or minus (-) 8.60 percent at 95% confidence level. These estimated volumes are final and not subject to adjustment. Prospective bidders are urged to examine this timber and to make their own estimates of quantity and quality.

I understand that any or all bids may be rejected. All bids must be signed and all bid items must be bid or the bid form may be rejected. I also understand that consideration and awarding a contract will be based upon my past performance and ability to complete the contract based upon equipment and staffing subject to my control.

FEDERAL ID: ____ - ____ - ____ or SOCIAL SECURITY NUMBER: ____ - ____ - ____

Company or individual bidding: _____

Company representative's name: _____

Address: _____

City: _____ State: _____ Zip: _____

IF AVAILABLE, PLEASE PLACE THE PERSONALIZED LABEL FROM YOUR PROSPECTUS IN THE ABOVE BOX.

Individual or company representative's signature: _____ Date: _____

Phone number : _____ Email (optional): _____

THE WINNING BIDDER MUST COMPLETE THE VERIFICATION OF WORKER'S DISABILITY COMPENSATION ACT COMPLIANCE (ON REVERSE SIDE IF DOUBLE SIDED) WITHIN 21 DAYS OF SALE AWARD DATE



| FOR DEPARTMENT USE ONLY | |
|----------------------------------|--|
| Sale Number (XX - XXX - XX - XX) | |
| Forest Management Unit: | |

TIMBER SALE VERIFICATION OF WORKER'S DISABILITY COMPENSATION ACT COMPLIANCE

As required by Act 317, P.A. 1969 (Worker's Compensation) and
Part 5 of Act 451 of 1994, as amended.

VERIFICATION OF WORKER'S DISABILITY COMPENSATION ACT COMPLIANCE

- This verification must be completed and submitted within 21 days of contract award and prior to the issuance of the timber sale contract.
- In addition, if boxes 2B or 2C are checked, then Notice of Exclusion or Certificate of Insurance must be submitted within twenty-one (21) days of the contract award and prior to the issuance of the timber sale contract.
- All information must be typed or printed except for written signatures.

Please Check Appropriate Categories:

1. My business is organized as (you **must** check one of the boxes below):
 - A. Sole Proprietorship (individual)
 - B. Partnership
 - C. Corporation
2. You **must** check one of the boxes below:
 - A. I certify my business is a sole proprietorship and it has no employees but the sole proprietor. I am not subject to the Worker's Compensation Laws.
 - B. I certify my business has satisfied its obligation to the Worker's Compensation Act through the use of an approved Notice of Exclusion (BWC-337, Rev. 5/96). I will provide a copy of the Notice of Exclusion within 21 days of the contract award. (For questions or a copy of the BWC-337, please call the Worker's Compensation Bureau at 517-322-1195).
 - C. I certify my business has a Worker's Compensation Policy. I will provide an original Certificate of Insurance within twenty-one (21) days of the contract award.
3. If you have checked item 2(A) or 2(B), you **must** indicate the number of **both** full-time and part-time employees, other than yourself, including family members and active partners (if none, you must enter "0").

_____ Full-time Employees

_____ Part-time Employees

| | | | |
|------------------|-------|-------------------------------------|--|
| Name of Business | | Federal ID (or) Social Security No. | |
| Address | | Telephone () | |
| City | State | ZIP | |

I hereby certify that the above information is true and correct. I agree to notify the Michigan DNR of any changes that occur in factors affecting my coverage during any of my present and future operations.

Signature of Owner or Authorized Representative

Title

Date

Please complete the "SEALED BID" information on the next page

Plowman Pine (61-011-22)
T28N, R14W, SEC. 35; T28N, R14W, SEC. 36; Leelanau COUNTY

In response to the notice of sale to be held 4:00 p.m. (local time) on April 14, 2022, I am hereby submitting my sealed bid (firm offer) for the following forest products to be cut. Bids for individual species must be at or above the advertised price. All non-responsive bid forms may be rejected.

| <u>PRODUCTS & SPECIES</u> | <u>ESTIMATED VOLUME*</u> | <u>ADVERTISED PRICE</u> | <u>BID PRICE/UNIT</u> |
|-------------------------------|--------------------------|-------------------------|-----------------------|
| Sawtimber | | | |
| Black Cherry | 3.1 MBF | \$ 149.00/MBF | \$ _____ |
| Jack Pine | 9.7 MBF | \$ 18.00/MBF | \$ _____ |
| Red Pine | 235.7 MBF | \$ 89.00/MBF | \$ _____ |
| Sugar Maple | 5.5 MBF | \$ 194.00/MBF | \$ _____ |
| White Pine | 10.3 MBF | \$ 39.00/MBF | \$ _____ |
| Pulpwood | | | |
| Jack Pine | 330 Cords | \$ 9.70/Cord | \$ _____ |
| Misc. Species 1 | 311 Cords | \$ 1.10/Cord | \$ _____ |
| Mixed Hardwood | 229 Cords | \$ 14.65/Cord | \$ _____ |
| Quaking Aspen | 19 Cords | \$ 13.20/Cord | \$ _____ |
| Red Pine | 2,520 Cords | \$ 34.20/Cord | \$ _____ |
| White Pine | 46 Cords | \$ 14.10/Cord | \$ _____ |

*The volumes are statistically estimated within plus (+) or minus (-) 3.49 percent at 95% confidence level. These estimated volumes are final and not subject to adjustment. Prospective bidders are urged to examine this timber and to make their own estimates of quantity and quality.

I understand that any or all bids may be rejected. All bids must be signed and all bid items must be bid or the bid form may be rejected. I also understand that consideration and awarding a contract will be based upon my past performance and ability to complete the contract based upon equipment and staffing subject to my control.

FEDERAL ID: _____ or SOCIAL SECURITY NUMBER: _____

Company or individual bidding: _____

Company representative's name: _____

Address: _____

City: _____ State: _____ Zip: _____

IF AVAILABLE, PLEASE PLACE THE PERSONALIZED LABEL FROM YOUR PROSPECTUS IN THE ABOVE BOX.

Individual or company representative's signature: _____ Date: _____

Phone number : _____ Email (optional): _____

THE WINNING BIDDER MUST COMPLETE THE VERIFICATION OF WORKER'S DISABILITY COMPENSATION ACT COMPLIANCE (ON REVERSE SIDE IF DOUBLE SIDED) WITHIN 21 DAYS OF SALE AWARD DATE



| FOR DEPARTMENT USE ONLY | |
|----------------------------------|--|
| Sale Number (XX - XXX - XX - XX) | |
| Forest Management Unit: | |

TIMBER SALE VERIFICATION OF WORKER'S DISABILITY COMPENSATION ACT COMPLIANCE

*As required by Act 317, P.A. 1969 (Worker's Compensation) and
Part 5 of Act 451 of 1994, as amended.*

VERIFICATION OF WORKER'S DISABILITY COMPENSATION ACT COMPLIANCE

- This verification must be completed and submitted within 21 days of contract award and prior to the issuance of the timber sale contract.
- In addition, if boxes 2B or 2C are checked, then Notice of Exclusion or Certificate of Insurance must be submitted within twenty-one (21) days of the contract award and prior to the issuance of the timber sale contract.
- All information must be typed or printed except for written signatures.

Please Check Appropriate Categories:

1. My business is organized as (you **must** check one of the boxes below):
 - A. Sole Proprietorship (individual)
 - B. Partnership
 - C. Corporation

2. You **must** check one of the boxes below:
 - A. I certify my business is a sole proprietorship and it has no employees but the sole proprietor. I am not subject to the Worker's Compensation Laws.
 - B. I certify my business has satisfied its obligation to the Worker's Compensation Act through the use of an approved Notice of Exclusion (BWC-337, Rev. 5/96). I will provide a copy of the Notice of Exclusion within 21 days of the contract award. (For questions or a copy of the BWC-337, please call the Worker's Compensation Bureau at 517-322-1195).
 - C. I certify my business has a Worker's Compensation Policy. I will provide an original Certificate of Insurance within twenty-one (21) days of the contract award.

3. If you have checked item 2(A) or 2(B), you **must** indicate the number of **both** full-time and part-time employees, other than yourself, including family members and active partners (if none, you must enter "0").

_____ Full-time Employees

_____ Part-time Employees

| | | | |
|------------------|-------|-------------------------------------|--|
| Name of Business | | Federal ID (or) Social Security No. | |
| Address | | Telephone () | |
| City | State | ZIP | |

I hereby certify that the above information is true and correct. I agree to notify the Michigan DNR of any changes that occur in factors affecting my coverage during any of my present and future operations.

Signature of Owner or Authorized Representative

Title

Date

Please complete the "SEALED BID" information on the next page