



**DEPARTMENT OF NATURAL RESOURCES  
STATE OF MICHIGAN  
TIMBER SALE PROSPECTUS #7817**

SCHEDULED SALE DATE AND TIME: 3:00 p.m. (local time) on May 27, 2026.

LOCATION: **BALDWIN OFFICE, 2468 W 24TH STREET, BALDWIN, MI 49304.**

PROSPECTUS NOTE: The bidder is advised to inspect the sale area and review the location, estimated volumes, operating costs and contract terms of proposed sales. Please be aware that some landowners may request 60 days or more notice for access across their land.

Notice is hereby given that bids will be received by the Unit Manager, CADILLAC MANAGEMENT UNIT, for certain timber on the following described lands:

Deadhead Pine Mix (63-007-25) / T24N, R10W, SEC. 29, SWSW.

T24N, R10W, SEC. 30, SENW,S1/2NE,NESW,N1/2SE,SESE.

T24N, R10W, SEC. 32, NW.

Wexford County, Advertised Price \$142,704.40, 126.3 Acres, Red Pine, Red Oak.

Two Headed Racer (63-012-25) / T24N, R10W, SEC. 21, S1/2SW,SWSE.

T24N, R10W, SEC. 28, NW,N1/2NE,SWNE,E1/2SW,W1/2SE.

Wexford County, Advertised Price \$84,540.05, 141.1 Acres, Aspen, Spruce/Fir/Tamarack.

SALE NOTE: Access may be through private land.

Bowl Choker Mix (63-053-25) / T21N, R05W, SEC. 26, NW,N1/2SW.

T21N, R05W, SEC. 27, NE,S1/2SW,NESE,S1/2SE.

T21N, R05W, SEC. 28, SE.

Missaukee County, Advertised Price \$309,132.90, 242.6 Acres, Hardwood, Red Oak.

SALE NOTE: The Sale Area has received damage from windthrow in Payment Unit 7 and oak decline and/or oak wilt in all Payment Units.

A recreation site such as a trail, pathway, or campground is within the sale area or the vicinity. Certain restrictions/specifications may be applicable including time restrictions.

## BID INSTRUCTIONS (VER. 10/10/2022):

### 1. Scheduled Bid Location, Date, and Time (2/11)

Bids must be received by the Unit Manager, BALDWIN OFFICE, 2468 W 24th Street, Baldwin, MI 49304, no later than 3:00 p.m. (local time) on May 27, 2026. For further information concerning this sale, contact David Fisher at 231-878-0494 extension .

### 2. Bidder's Qualifications (10/22)

If all or part of a timber sale was prepared by a private contractor, the contractor and that contractor's company are not permitted to bid on the timber sale. A person must be 18 years of age or older to purchase timber. Permanent employees of the Department of Natural Resources or members of their immediate household may not bid. Former employees, in the permanent or seasonal class, may not bid until 3 months after the last day of active duty. Bids will not be accepted from individuals or companies appearing on the DNR/FRD No-Bid List. This list contains the names of purchasers who previously failed to execute a contract within 21-days or who have a history of poor performance.

### 3. Preparation of Sealed Bids (5/16)

Bid Forms may be completed online thru Michigan DNR Timber Sale Online Bidding (OLB) at [www.michigan.gov/timberbidding](http://www.michigan.gov/timberbidding) or by completing the hardcopy Bid Form found in the Timber Sale Prospectus . Hardcopy Bid Forms shall be manually signed in ink. Registration in OLB is considered your 'signature' for all bids submitted thru that system. Bid prices must be entered for each species and product in the Bid Price column for all material subject to bidding and all fill-in blanks must be completed. If erasures or other changes appear on the hardcopy Bid Form, each erasure or change must be initialed by the person signing the bid.

### 4. Submission of Sealed Bids (5/16)

Bid forms may be obtained from the Unit Manager or thru OLB. Bids may be submitted hardcopy or thru OLB. All hardcopy bids must be submitted on the bid form and in an envelope clearly identified as described in this section. NOTE: Only one bid form per bid envelope. Sealed bids must be submitted to the Unit office designated in the prospectus and must be submitted at or prior to the time established in the prospectus. The envelope should show on the outside (a) the sale name or number and (b) the date and time of bid opening, as shown in the prospectus. Bids received after the time specified in the sale prospectus are late bids and will be rejected.

It is possible for a bidder to submit multiple bids on a single sale. For example, a bid may be submitted hardcopy and a bid may be submitted thru OLB. Or, two bidders from the same company could both submit bids on the same sale. If this were to happen, the State would accept all bids received and award the contract accordingly. All bidding and contractual requirements would apply to all bids received.

### 5. Public Opening of Sealed Bids (7/16)

If conditions permit, the sealed bids will be publicly opened and posted at the time and place set in the prospectus.

If a bidder, present at a bid opening, has submitted bids on more than one sale, that bidder may withdraw their unopened bid envelopes or announce the withdrawal of their online bid after being declared the successful bidder on one sale.

### 6. Award of Contract (1/11)

Award of the contract will be made to the Bidder whose bid, conforming to the prospectus, is most advantageous to the State of Michigan on the basis of total value at rates bid for the estimated quantities. The State reserves the right to reject any bid or waive any minor irregularity in bids received. A written award mailed (or otherwise furnished) to the successful Bidder shall be deemed to result in a binding contract without further action by either party.

### 7. Down Payment (1/11)

The Bidder to whom award is made must make a down payment within 21 days of the sale award. The amount of the down payment will be calculated as shown in the Bond and Payment Schedule of this prospectus. Only cash may be used to meet this requirement.

### 8. Performance Security (1/11)

As guarantee of faithful performance, a cash bond, certificate of deposit, surety bond or irrevocable letter of credit (LOC) is required within 21 days of the sale award. The amount of the performance security is shown in the Bond and

Payment Schedule of this prospectus. If an LOC or surety is used, the coverage must extend for at least 6 months beyond the contract expiration.

#### 9. Worker's Compensation (10/22)

Purchaser shall obtain worker's compensation insurance to cover claims under Michigan's Worker's Disability Compensation Act of 1969 or similar employee benefit act of any other state applicable to an employee. Verification of Worker's Disability Compensation Act Compliance must be completed and submitted within 21 days of contract award and prior to the issuance of the timber sale contract. In addition, if applicable, Notice of Exclusion or Certificate of Insurance must also be submitted.

#### 10. Timber Sale Contract (10/22)

Additional conditions and requirements common to all timber sales are listed on the timber sale contract (R4031) and are available on line at [www.michigan.gov/timber](http://www.michigan.gov/timber). Contact the Unit Manager for additional information or a sample contract. Within 21 days of the date of the award letter, the bidder must sign the contract and provide the required down payment, performance security, and verification of worker's disability compensation. The down payment and performance security shall be in accordance with the provisions of the timber sale contract, in the sums stated in this prospectus. If these actions are not taken, then the Bidder, the Bidder's corporation, and the corporation's principals may not be permitted to bid on State timber sales for a period of 3 months after the first offense, 6 months after the second offense, and 1 year after the third offense. An offense will only be counted against the Bidder for 5 years. In addition, the Bidder certifies that if awarded this contract, the Bidder will complete the timber sale contract in accordance with its terms and any modifications thereof including requirements to purchase, cut, and remove the included timber by the expiration date.

Payment Unit values in the State Forest Timber Sale Contract are calculated based on the advertised value of the Payment Unit as a percentage of the total advertised value of the contract. The advertised value of each Payment Unit is given in the Description of Timber by Payment Unit table on the Timber Sale Information page. For example, if the value of Payment Unit 1 is advertised as \$1,500 and the total Timber Sale value is advertised as \$10,000, the contract price for Payment Unit 1 will be 15% of the total bid price ( $\$1,500/\$10,000 * 100$ ).

#### 11. Disclaimer of Estimates and Bidder's Warranty of Inspection (10/22)

Before submitting this bid, the Bidder is advised and cautioned to inspect the sale area, review the requirements of the sale contract, and take other steps as may be reasonably necessary to ascertain the location, estimated volumes, construction estimates, and operating costs of the proposed sale. Failure to do so will not relieve the Bidder from responsibility for completing the contract.

The Bidder warrants that this bid is submitted solely on the basis of the Bidder's examination and inspection of the quality and quantity of the timber offered for sale and the Bidder's opinion of the value thereof and the costs of recovery. No reliance should be placed on the State of Michigan's estimates of timber quality, quantity or costs of recovery. Bidder further acknowledges that the State of Michigan: (i) expressly disclaims any warranty of fitness of timber for any purpose; (ii) offers this timber as is without any warranty of quality (merchantability) or quantity and (iii) expressly disclaims any warranty as to the quantity or quality of timber sold.

#### 12. Certification and Chain-of-Custody (10/22)

Unless otherwise indicated in the contract under section 7 – Other Conditions of the Sale Specific Conditions & Requirements, the area encompassed by this timber sale is certified to the standards of the Forest Stewardship Council (FSC) - Certificate #SCS-FM/COC-00090N and the Sustainable Forestry Initiative (SFI) - Certificate #NSF-SFIS-5Y031-SF5. Forest products from this sale may be delivered to the mill as "FSC 100% and / or SFI certified" as long as the contractor hauling the forest products is chain-of-custody (COC) certified or covered under a COC certificate from the destination mill. The purchaser is responsible for maintaining COC after leaving the sale area.

#### 13. Good Neighbor Authority (GNA) Requirements (10/22)

If the name of this timber sales contains the acronym GNA, it is authorized by the Good Neighbor Authority (GNA) and covered by various agreements between the U.S. Forest Service and the State. The timber sale occurs on federal land and the following conditions apply:

GNA contracts on US Forest Service land will not be awarded to purchasers on the Federal list of excluded parties. The System for Award Management (SAM) will be checked for active excluded parties prior to award of contract. In

addition, the Bidder to whom award is made must complete an Assurance Regarding Felony Conviction or Tax Delinquent Status for Corporate Applicants (AD-3031).

14. Good Neighbor Authority (GNA) Requirements, con't (10/22)

Bidder certifies, by signing this bid form, that to the best of Bidder's knowledge that the following representations are accurate and complete.

- a. That the Bidder and its principals are not presently debarred, suspended, proposed for debarment, declared ineligible, or voluntary excluded from timber sales (covered transactions) by any Federal department or agency.
- b. That the Bidder and its principals have not within a 3-year period preceding this bid been convicted of or had a civil judgment rendered against them for commission of fraud or a criminal offense in connection with obtaining , attempting to obtain, or performing a public (Federal, State, or local) transaction or contract under a public transaction; violation of Federal or State antitrust statutes or commission of embezzlement, theft, forgery, bribery, falsification or destruction of records, making false statements, or receiving stolen property.
- c. That the Bidder and its principals are not presently indicted for or otherwise criminally or civilly charged by a governmental entity (Federal, State, or local) with commission of any of the offenses enumerated in paragraph b of this certification.
- d. That the Bidder and its principals have not within a 3-year period preceding this bid had one or more public transactions (Federal, State, or local) terminated for breach or default of a timber or forest product contract.

Bidders that cannot certify this requirement, in whole or in part, shall submit an explanation with their bid.

Scott Bowen  
Director

## TIMBER SALE INFORMATION

Deadhead Pine Mix (63-007-25)  
T24N, R10W, SEC. 29; T24N, R10W, SEC. 30; T24N, R10W, SEC. 32.  
Wexford County (Advertised Price \$142,704.40)

A timber sale contract for this lump sum, sealed bid timber sale will be awarded to the responsible bidder offering the highest sealed bid price. All units of volume listed below were estimated using the Inventory Manager computer program and the new Michigan taper model. Bids must be at or above the following advertised price for each product and species:

<u>PRODUCTS &amp; SPECIES</u>	<u>ESTIMATED UNITS*</u>	<u>ADVERTISED PRICE</u>
<b>Sawtimber</b>		
B. T. Aspen	41.0 MBF	\$ 119.00 / MBF
Red Maple	13.4 MBF	\$ 140.00 / MBF
Red Oak	305.4 MBF	\$ 174.00 / MBF
Red Pine	337.6 MBF	\$ 117.00 / MBF
White Pine	97.1 MBF	\$ 47.00 / MBF
<b>Pulpwood</b>		
Mixed Aspen	54 Cords	\$ 18.60 / Cord
Mixed Hardwood	154 Cords	\$ 14.40 / Cord
Red Oak	277 Cords	\$ 27.70 / Cord
Red Pine	412 Cords	\$ 46.40 / Cord
White Pine	488 Cords	\$ 17.90 / Cord

\* The total volume is statistically estimated within plus (+) or minus (-) 14.13 percent. There are an estimated 3,248 cords on this timber sale, plus or minus 459 cords at the 95% confidence level. The estimated units are final and not subject to adjustment. Prospective bidders are urged to examine this timber and to make their own estimates of quantity and quality.

### **BOND AND PAYMENT SCHEDULE:**

1. A bond in the amount of \$7,135.00 to insure faithful performance of the conditions of the contract will be deposited by the successful bidder within 21 days of the sale award.
2. Cutting in any sale or unit without the required advance payment would be considered a trespass.
3. Total payment must be paid in advance or according to the following schedule :
  - (a) Ten percent (10%) of the sale value must be paid within 21 days of the sale award.
  - (b) The 10% down payment will be credited towards the first unit cut.
  - (c) Payment for each of the following units must be made before cutting begins in that unit:

PAYMENT UNIT NUMBER	PERCENT OF TOTAL SALE VALUE
01	6.4%
02	41.1%
03	52.5%
4. If no cutting takes place, the 10% down payment will not be refunded.
5. Operations on the contract issued will terminate on 12/31/2029.

### **SALE STATISTICS**

Volumes were calculated in cubic feet using the Michigan taper model. Cubic foot volume includes all wood inside bark for the product indicated. For display purposes, cubic feet were converted to cords and MBF using a simple conversion factor, e.g. 79 cubic feet per cord and 185 cubic feet per MBF. The cubic foot volumes are precise; the cords and MBF volumes are not. Cubic foot volume cannot be directly converted to cords or boards with precision.

### **SALE VOLUMES**

The total estimated sale volume may not equal the sum of the species/products due to the nature of statistical calculations associated with double sampling methodology.

VOLUME		STATISTICAL RANGE IN CORDS		
TOTAL CUBIC FEET	TOTAL CORDS	PERCENT ERROR	MINIMUM	MAXIMUM
256,608	3,248	14.13%	2,789	3,707

**VDU VOLUMES**

A VDU is a Volume Determination Unit. Volumes and their associated statistics are calculated at the VDU level and summarized to the sale level. There is often a one to one relationship between a VDU and a Payment Unit, but not always, depending on the cruise design. Refer to the VDU TO PAYMENT UNIT table.

VDU	VOLUME		PERCENT ERROR	RANGE IN CORDS	
	TOTAL CUBIC FEET	TOTAL CORDS		MINIMUM	MAXIMUM
17	33,550	425	27.66%	307	542
23	98,390	1,245	20.69%	988	1,503
48	124,668	1,578	23.30%	1,210	1,946
<b>TOTAL:</b>	<b>256,608</b>	<b>3,248</b>		<b>2,505</b>	<b>3,991</b>

**VDU TO PAYMENT UNIT**

When a VDU is associated with more than one Payment Unit (PU), the VDU volumes are assigned to the PU based on acres of the VDU within the PU.

VDU	VDU ACRES	PU	PU ACRES
<b>TOTAL:</b>			

**DESCRIPTION OF TIMBER BY PAYMENT UNIT (PU)**

PU	MARKET GROUP	PRODUCT	QUANTITY	UNIT	ACRES	ADVERTISE PRICE
1	Red Pine	Sawtimber	13.6	MBF	26.7	\$9,135.80
	White Pine		22.0	MBF		
	Mixed Aspen	Pulpwood	11	Cords		
	<i>Quaking Aspen</i>		11	<i>Cords</i>		
	Red Pine		14	Cords		
	White Pine		316	Cords		
2	Red Maple	Sawtimber	3.0	MBF	46.8	\$58,687.70
	Red Oak		114.2	MBF		
	Red Pine		190.1	MBF		
	White Pine		56.5	MBF		
	Mixed Hardwood	Pulpwood	9	Cords		
	<i>Red Maple</i>		9	<i>Cords</i>		
	Red Oak		90	Cords		
	Red Pine		197	Cords		
	White Pine		97	Cords		
3	B. T. Aspen	Sawtimber	41.0	MBF	52.8	\$74,880.90
	Red Maple		10.4	MBF		
	Red Oak		191.2	MBF		
	Red Pine		133.9	MBF		
	White Pine		18.6	MBF		
	Mixed Aspen	Pulpwood	43	Cords		
	<i>B. T. Aspen</i>		43	<i>Cords</i>		
	Mixed Hardwood		145	Cords		
	<i>Paper Birch</i>		95	<i>Cords</i>		
	<i>Red Maple</i>		50	<i>Cords</i>		
	Red Oak		187	Cords		
	Red Pine		201	Cords		
	White Pine		75	Cords		
TOTAL:			794.5	MBF		
TOTAL:			1,385	Cords		

# Sale Specific Conditions & Requirements

**Sale Name: Deadhead Pine Mix**

**Sale Number: 63-007-25 Seq#: 1**

## 1 - Sale Area

### 1.2 - Boundaries

#### 1.2.1 - Painted Boundaries (9/19)

The sale boundary and Payment Unit boundaries are marked and identified by blue, red and yellow paint. Exterior sale boundary lines against private property are marked with blue paint. Exterior sale boundary lines against state are marked with red paint. Interior Payment Unit boundaries are marked with yellow paint. Retention patches are marked with red paint; no harvesting activities may occur within these areas. The painted boundary line trees are not Included Timber and are to be protected unless marked with orange paint. Yellow painted trees designating an interior Payment Unit boundary are only to be cut when all surrounding Payment Units have been paid.

## 2 - Timber Specifications

### 2.1 - Included Timber

#### 2.1.1 - Clearcut Unit(s) with Unmerchantable Trees (6/14)

Within Payment Unit(s) 2 and 3, cut all trees that are two (2) inches or more at DBH, except DO NOT CUT hemlock, cedar, and white pine 24 inches or more at DBH.

Special protection trees identified in accordance with condition 3.4.2, within clearcutting unit boundaries, are not Included Timber and are to be protected.

#### 2.1.3 - Cut Tree Marked Unit(s) (12/08)

Within Payment Unit(s) 1, all trees are designated for cutting when marked with orange paint above and below stump height, regardless of merchantability.

### 2.2 - Utilization

#### 2.2.3 - Stump Heights (12/24)

Stump heights within Sale Area shall not exceed Six (6) inches for all trees. This is in order to facilitate planting operations. A written waiver of this requirement may be obtained if wet summer weather makes winter logging necessary.

## 3 - Payments

### 3.3 - Pre-measured Sales

#### 3.3.4 - Dividing Payment Units (7/14)

Payment Unit(s) 2 and 3, may be divided at the request of the Purchaser and upon approval of the Unit Manager. Dividing Payment Units is a contract modification which requires a Timber Sale Contract Amendment. There will be only one division per Payment Unit.

### 3.4 - Damaged Timber

#### 3.4.2 - Special Protection Trees (1/25)

The Purchaser shall not cut live or dead special protection trees within cutting units or clearings. Special protection trees are Hemlock, Cedar, and White Pine 24 inches or more at DBH. If Purchaser's operations have cut or damaged special protection trees through carelessness, the Purchaser shall pay \$200 as fixed, agreed and liquidated damages for each special protection tree cut or damaged. Such payment does not constitute ownership of the undesignated timber.

## 4 - Transportation

### 4.1 - Construction

#### 4.1.3 - Slash and Earthen Piles (8/04)

Piles or windrows of earth along roads and landings that have been widened or constructed shall be leveled. Slash from road maintenance or construction, including stumps, shall be dispersed throughout the sale.

#### 4.1.12 - No New Roads (1/12)

No new roads will be permitted in any Payment Unit. All operations are limited to existing roads. Only Skid trails will be allowed.

### 4.2 - Maintenance

#### 4.2.1 - Hauling Restriction (12/08)

Hauling may be restricted on forest roads by the Unit Manager or his/her representative. The restriction may occur during spring breakup or wet weather conditions.

#### 4.2.4 - Grading (10/16)

For completion of the sale, state forest roads must be graded. In general, this will require a road grader or bulldozer to shape up the roads after forest products have been hauled off site. This includes cleaning of drainage areas, grading, crowning and filling with gravel, if necessary. The grading equipment to be used must be approved by the Unit Manager or his/her representative.

#### 4.2.5 - Two Wheel Drive Condition (2/04)

All existing trail roads on and adjacent to the Sale Area must be passable by two-wheel drive traffic for the duration of the sale.

## 5 - Operations

### 5.1 - Notification

#### 5.1.1 - Pre-sale Conference (10/25)

A pre-sale conference on site between the Purchaser and Sale Administrator is required prior to beginning any operations a Payment Unit to determine landing and road locations. The Unit Manager or his/her representative must be contacted at least 10 days in advance to schedule the conference.

#### 5.1.4 - Post-Sale Conference (10/16)

A post-sale conference on site between the Purchaser and sale administrator is required 5 days prior to the completion of active logging operations to determine clean-up and repair of landings, road edges, and the fulfillment of other contract specifications.

### 5.2 - Conduct of Operations

#### 5.2.1 - Slash

##### 5.2.1.8 - Slash Height (12/08)

No slash or tree tops may exceed 12 inches in height.

##### 5.2.1.11 - Slash for Reforestation (3/21)

To facilitate reforestation, Payment Unit(s) 2 and 3 shall be left with slash evenly distributed. Bunched tops within the cutting area shall be broken up and scattered. Stumps shall be cut low to the ground. Processing sites shall not be left with a compacted layer of slash; tops from these sites shall be hauled back into the cut area and scattered.

#### 5.2.2 - Hazard Trees/Snags

##### 5.2.2.1 - Den Trees (10/16)

Obvious hollow and/or den trees shall be protected and left standing unless they are a safety hazard.

#### 5.2.3 - Operating Restrictions

##### 5.2.3.5 - Oak Wilt Restriction (1/18)

Within Payment Unit(s) 2 and 3, unless changed by written agreement, cutting, skidding, hauling within the sale and brushing of access roads to the sale are not permitted during the period of April 15 to July 15. Operations may be allowed if specific steps are taken to prevent damaging uncut oak during the high-risk period. Those steps may include completing all road brushing before April 15 and clearing a tree-length buffer along uncut oak cover before April 15. This is necessary to reduce the spread of oak wilt. For more information, contact the Unit Manager or his/her representative.

##### 5.2.32 - Decking/Landing Restoration (9/13)

All decking and landing areas must have the surface area restored to a condition equal to or better than before. This is to

ensure the proper regeneration of the stand. Wood debris, chips and "cookies" from trimmings must be removed or scattered away from landing and loading areas and may not be windrowed on the edge.

#### 5.4 - Soil Protection

##### 5.4.1 - Rutting Restriction, General (7/16)

Operations are to cease immediately if equipment and weather conditions result in rutting of roads and/or skid trails which are 12 inches or greater in depth and 50 feet in length. The Unit Manager or his/her representative may restrict hauling and/or skidding if ruts exceed the specified depth. With the Unit Manager or his/her representative's approval, the Purchaser may return to the area when the risk of rutting has decreased.

#### 5.8 - Protection of Endangered Species

##### 5.8.5 - Protection of Raptor Nests (3/13)

All trees with raptor nests will be protected if found during harvesting operations. Notification will be made to the Unit Manager or his/her representative who will notify the Wildlife Biologist so an onsite evaluation and recommendation can be made, if necessary.

### 6 - Safety and Fire Prevention

#### 6.2 - Signing

##### 6.2.1 - Road Posting (10/20)

The Purchaser is responsible for posting and maintaining caution signs on roads prior to beginning operations. The road must be posted approximately 350 feet from the Sale Area to warn of logging activity and truck traffic. Signs must be removed when harvest operations are suspended or completed. The Purchaser will provide these signs.



### TIMBER SALE MAP

This information provided by authority of Part 525, 1994 PA 451, as amended.

Sale Number  
**63-007-25**

Date  
**09/05/2025**

Forest Management Unit Cadillac Mgt Unit	County Wexford	Mapped By: Adamczyk	Scale 1:15,840	Page 1	Of 1
		Cruised By: River Valley Forestry			

Township 24N	Range 10W	Section(s) and Subdivision(s) Sec. 29 SWSW; Sec. 30 SENW,S1/2NE,NESW,N1/2SE,SESE; Sec. 32 NW;
-----------------	--------------	---

Cover Type			
A = Aspen	J = Jack Pine	O = Oak	U = Upland Brush
B = Paper Birch	K = Rock	P = Lowland Poplar	UM = Upland Mix Forest
C = Cedar	L = Lowland Brush	Q = Mixed Swamp Conifer	V = Bog or Marsh
D = Treed Bog	LM = Lowland Mix Forest	R = Red Pine	W = White Pine
E = Swamp Hardwoods	M = Maple, Beech, Birch	S = Black Spruce	X = Non Stocked
F = Spruce/Fir	MC = Mixed Conifer	T = Tamarack	Y = Sand
G = Grass	MD = Mixed Deciduous	Z = Water	
H = Hemlock	N = Marsh		

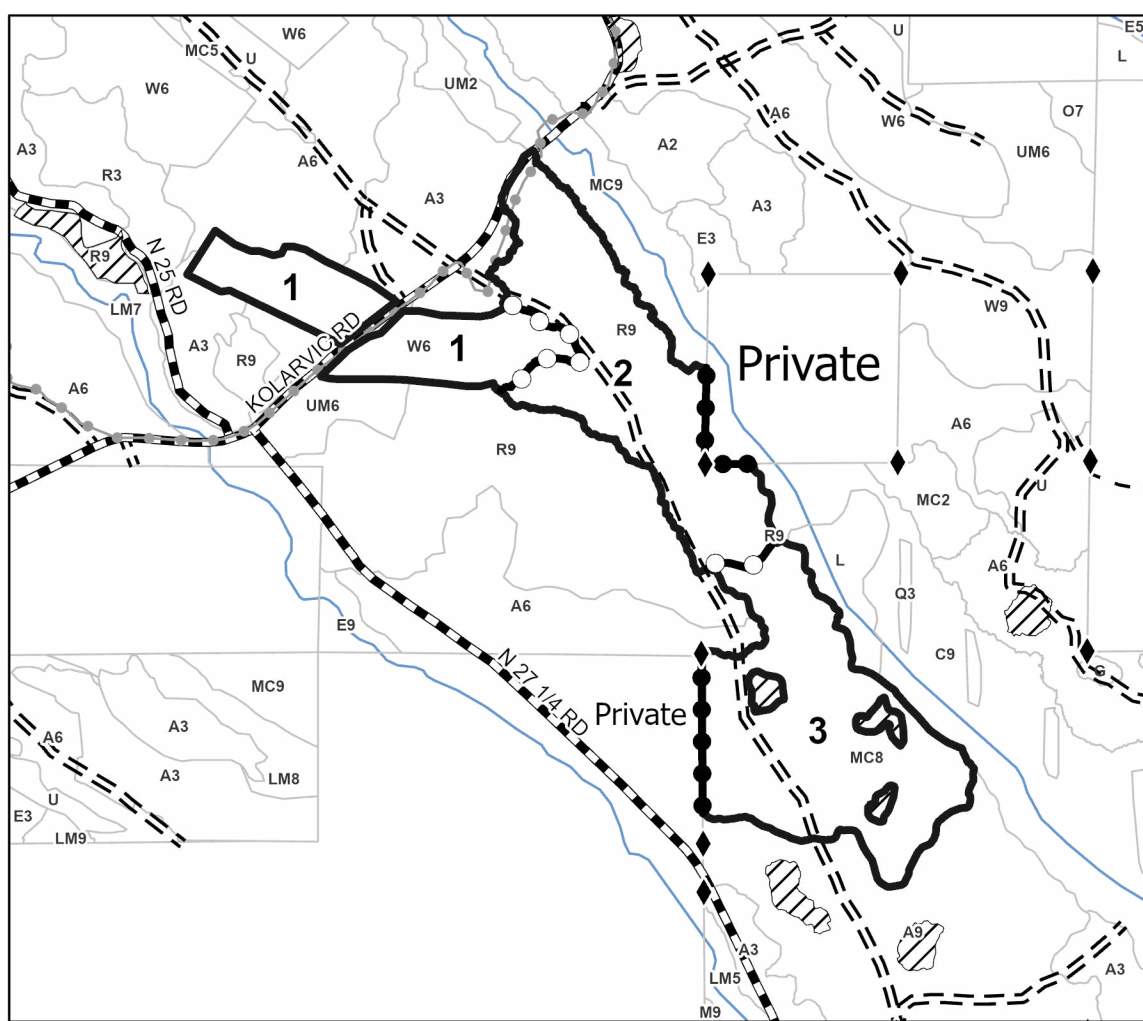
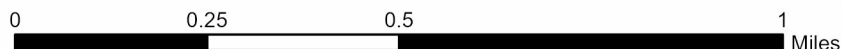
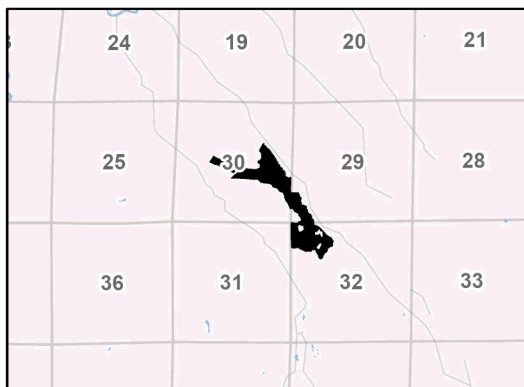
Density	
0 = Non Stocked	5 = Pole Timber Medium
1 = Seedling Sapling Poor	6 = Pole Timber Well
2 = Seedling Sapling Medium	7 = Saw Timber Poor
3 = Seedling Sapling Well	8 = Saw Timber Medium
4 = Pole Timber Poor	9 = Saw Timber Well

Payment Unit Number	Acres
1	26.8
2	46.8
3	52.8

## Deadhead Pine Mix

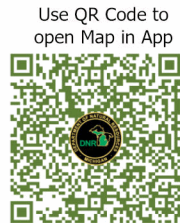
**126.4 Acres**

### Locator Map 1:100,000



### Legend

- Payment Unit
- Private Line (Blue)
- Payment Unit (Yellow)
- Recreational Trails
- Forest Access Route
- Government Gravel/Dirt
- Private Gravel/Dirt
- Survey Grade Corner



## TIMBER SALE INFORMATION

Two Headed Racer (63-012-25)  
T24N, R10W, SEC. 21; T24N, R10W, SEC. 28.  
Wexford County (Advertised Price \$84,540.05)

SALE NOTE: Access may be through private land.

A timber sale contract for this lump sum, sealed bid timber sale will be awarded to the responsible bidder offering the highest sealed bid price. All units of volume listed below were estimated using the Inventory Manager computer program and the new Michigan taper model. Bids must be at or above the following advertised price for each product and species:

<u>PRODUCTS &amp; SPECIES</u>	<u>ESTIMATED UNITS*</u>	<u>ADVERTISED PRICE</u>
Sawtimber		
Mixed Aspen	119.5 MBF	\$ 119.00 / MBF
Red Maple	68.9 MBF	\$ 140.00 / MBF
White Pine	140.1 MBF	\$ 47.00 / MBF
Pulpwood		
Balsam Fir	426 Cords	\$ 33.80 / Cord
Black Cherry	58 Cords	\$ 14.40 / Cord
Jack Pine	13 Cords	\$ 12.80 / Cord
Mixed Aspen	1,181 Cords	\$ 18.60 / Cord
Mixed Spruce	763 Cords	\$ 9.15 / Cord
Red Maple	276 Cords	\$ 14.40 / Cord
Red Pine	61 Cords	\$ 46.40 / Cord
White Pine	164 Cords	\$ 17.90 / Cord

\* The total volume is statistically estimated within plus (+) or minus (-) 13.12 percent. There are an estimated 3,733 cords on this timber sale, plus or minus 490 cords at the 95% confidence level. The estimated units are final and not subject to adjustment. Prospective bidders are urged to examine this timber and to make their own estimates of quantity and quality.

### BOND AND PAYMENT SCHEDULE:

1. A bond in the amount of \$8,454.00 to insure faithful performance of the conditions of the contract will be deposited by the successful bidder within 21 days of the sale award.
2. Cutting in any sale or unit without the required advance payment would be considered a trespass.
3. Total payment must be paid in advance or according to the following schedule :
  - (a) Ten percent (10%) of the sale value must be paid within 21 days of the sale award.
  - (b) The 10% down payment will be credited towards the first unit cut.
  - (c) Payment for each of the following units must be made before cutting begins in that unit:
 

PAYMENT UNIT NUMBER	PERCENT OF TOTAL SALE VALUE
01	11.3%
02	41.7%
03	11.4%
04	26.5%
05	9.1%
4. If no cutting takes place, the 10% down payment will not be refunded.
5. Operations on the contract issued will terminate on 12/31/2029.

### SALE STATISTICS

Volumes were calculated in cubic feet using the Michigan taper model. Cubic foot volume includes all wood inside bark for the product indicated. For display purposes, cubic feet were converted to cords and MBF using a simple conversion factor, e.g. 79 cubic feet per cord and 185 cubic feet per MBF. The cubic foot volumes are precise; the cords and MBF volumes are not. Cubic foot volume cannot be directly converted to cords or boards with precision.

### SALE VOLUMES

The total estimated sale volume may not equal the sum of the species/products due to the nature of statistical calculations associated with double sampling methodology.

VOLUME		PERCENT ERROR	STATISTICAL RANGE IN CORDS	
TOTAL CUBIC FEET	TOTAL CORDS		MINIMUM	MAXIMUM
294,926	3,733	13.12%	3,243	4,223

**VDU VOLUMES**

A VDU is a Volume Determination Unit. Volumes and their associated statistics are calculated at the VDU level and summarized to the sale level. There is often a one to one relationship between a VDU and a Payment Unit, but not always, depending on the cruise design. Refer to the VDU TO PAYMENT UNIT table.

VDU	VOLUME		PERCENT ERROR	RANGE IN CORDS	
	TOTAL CUBIC FEET	TOTAL CORDS		MINIMUM	MAXIMUM
65	960	12	114.90%	0	26
72	88,957	1,126	24.24%	853	1,399
73	537	7	137.22%	0	16
75	13,370	169	43.73%	95	243
81	18,989	240	38.39%	148	333
89	78,699	996	29.56%	702	1,291
130	30,479	386	34.00%	255	517
131	20,606	261	49.15%	133	389
134	42,329	536	38.31%	331	741
<b>TOTAL:</b>	<b>294,926</b>	<b>3,733</b>		<b>2,516</b>	<b>4,955</b>

**VDU TO PAYMENT UNIT**

When a VDU is associated with more than one Payment Unit (PU), the VDU volumes are assigned to the PU based on acres of the VDU within the PU.

VDU	VDU ACRES	PU	PU ACRES
<b>TOTAL:</b>			

**DESCRIPTION OF TIMBER BY PAYMENT UNIT (PU)**

PU	MARKET GROUP	PRODUCT	QUANTITY	UNIT	ACRES	ADVERTISE PRICE
1	Mixed Aspen	Sawtimber	9.2	MBF	14.2	\$9,569.40
	<i>Quaking Aspen</i>		9.2	<i>MBF</i>		
	Red Maple		12.4	MBF		
	White Pine		62.0	MBF		
	Balsam Fir	Pulpwood	16	Cords		
	<i>Balsam Fir</i>		16	<i>Cords</i>		
	Black Cherry		4	Cords		
	<i>Black Cherry</i>		4	<i>Cords</i>		
	Mixed Aspen		103	Cords		
	<i>Quaking Aspen</i>		103	<i>Cords</i>		
	Red Maple		12	Cords		
	Red Pine		6	Cords		
	<i>Red Pine</i>	Sawtimber	2.2	<i>MBF</i>		
	<i>Red Pine</i>	Pulpwood	2	<i>Cords</i>		
White Pine		48	Cords			
2	Mixed Aspen	Sawtimber	62.7	MBF	74.4	\$35,222.50
	<i>B. T. Aspen</i>		41.4	<i>MBF</i>		
	<i>Quaking Aspen</i>		21.3	<i>MBF</i>		
	Red Maple		20.2	MBF		
	White Pine		12.0	MBF		
	Balsam Fir	Pulpwood	192	Cords		
	<i>Balsam Fir</i>	Sawtimber	2.7	<i>MBF</i>		
	<i>Balsam Fir</i>	Pulpwood	187	<i>Cords</i>		
	Black Cherry		31	Cords		
	<i>Black Cherry</i>	Sawtimber	3.1	<i>MBF</i>		
	<i>Black Cherry</i>	Pulpwood	25	<i>Cords</i>		
	Mixed Aspen		811	Cords		
	<i>B. T. Aspen</i>		407	<i>Cords</i>		
	<i>Quaking Aspen</i>		404	<i>Cords</i>		
	Mixed Spruce		6	Cords		
	<i>Black Spruce</i>	Sawtimber	1.0	<i>MBF</i>		
	<i>Black Spruce</i>	Pulpwood	4	<i>Cords</i>		
	Red Maple		76	Cords		
White Pine		67	Cords			
3	Mixed Aspen	Sawtimber	8.0	MBF	15.1	\$9,665.05
	<i>B. T. Aspen</i>		8.0	<i>MBF</i>		
	Red Maple		11.1	MBF		
	Mixed Aspen	Pulpwood	96	Cords		
	<i>B. T. Aspen</i>		44	<i>Cords</i>		
	<i>Quaking Aspen</i>		52	<i>Cords</i>		
	Mixed Spruce		507	Cords		
	<i>White Spruce</i>	Sawtimber	20.9	<i>MBF</i>		
	<i>White Spruce</i>	Pulpwood	465	<i>Cords</i>		
Red Maple		51	Cords			
4	Mixed Aspen	Sawtimber	20.8	MBF	32.8	\$22,417.50
	<i>Quaking Aspen</i>		20.8	<i>MBF</i>		
	Red Maple		6.7	MBF		
	White Pine		66.1	MBF		
	Balsam Fir	Pulpwood	197	Cords		
	<i>Balsam Fir</i>	Sawtimber	12.8	<i>MBF</i>		
	<i>Balsam Fir</i>	Pulpwood	171	<i>Cords</i>		
	Black Cherry		18	Cords		
	<i>Black Cherry</i>	Sawtimber	1.6	<i>MBF</i>		
	<i>Black Cherry</i>	Pulpwood	15	<i>Cords</i>		
	Jack Pine		13	Cords		
	Mixed Aspen		115	Cords		

**DESCRIPTION OF TIMBER BY PAYMENT UNIT (PU), CON'T**

PU	MARKET GROUP	PRODUCT	QUANTITY	UNIT	ACRES	ADVERTISE PRICE
4 con't	<i>Quaking Aspen</i>	<i>Pulpwood</i>	115	<i>Cords</i>		
	Mixed Spruce		250	Cords		
	<i>Black Spruce</i>	<i>Sawtimber</i>	17.7	<i>MBF</i>		
	<i>Black Spruce</i>	<i>Pulpwood</i>	215	<i>Cords</i>		
	Red Maple		69	Cords		
	Red Pine		55	Cords		
	<i>Red Pine</i>	<i>Sawtimber</i>	7.3	<i>MBF</i>		
	<i>Red Pine</i>	<i>Pulpwood</i>	40	<i>Cords</i>		
	White Pine		47	Cords		
5	Mixed Aspen	Sawtimber	18.8	MBF	4.6	\$7,665.60
	<i>Quaking Aspen</i>		18.8	<i>MBF</i>		
	Red Maple		18.5	MBF		
	Balsam Fir	Pulpwood	21	Cords		
	<i>Balsam Fir</i>		21	<i>Cords</i>		
	Black Cherry		5	Cords		
	<i>Black Cherry</i>		5	<i>Cords</i>		
	Mixed Aspen		56	Cords		
	<i>Quaking Aspen</i>		56	<i>Cords</i>		
	Red Maple		68	Cords		
	White Pine		2	Cords		
TOTAL:			328.5	MBF		
TOTAL:			2,942	Cords		

## Sale Specific Conditions & Requirements

**Sale Name: Two Headed Racer**

**Sale Number: 63-012-25 Seq#: 1**

### 1 - Sale Area

#### 1.2 - Boundaries

##### 1.2.1 - Painted Boundaries (9/19)

The sale boundary and Payment Unit boundaries are marked and identified by blue, red and yellow paint. Exterior sale boundary lines against private property are marked with blue paint. Exterior sale boundary lines against state are marked with red paint. Interior Payment Unit boundaries are marked with yellow paint. Retention patches are marked with red paint; no harvesting activities may occur within these areas. The painted boundary line trees are not Included Timber and are to be protected. Yellow painted trees designating an interior Payment Unit boundary are only to be cut when all surrounding Payment Units have been paid.

### 2 - Timber Specifications

#### 2.1 - Included Timber

##### 2.1.1 - Clearcut Unit(s) with Unmerchantable Trees (6/14)

Within Payment Unit(s) 1, 2, and 3, cut all species trees that are two (2) inches or more at DBH, except oak, cedar, hemlock, paper birch, white pine 4.5 inches or less, and green marked trees.

Also, within Payment Units 2 and 3, do not cut red pine or white pine 18 inches or greater.

Within Payment Unit(s) 4, cut all trees that are two (2) inches or more at DBH, except do not cut cedar and hemlock.

Also, within Payment unit 4, do not cut green marked trees or white pine 20 inches and greater.

##### 2.1.2 - Clearcut Unit(s) w/o Unmerchantable Trees (8/11)

Within Payment Unit(s) 5, cut all species trees which meet minimum piece specifications in 2.2 Utilization, except cedar and Hemlock.

### 4 - Transportation

#### 4.1 - Construction

##### 4.1.2 - Stream Crossings, Specific (3/11)

The crossing of Apple Creek will require the installation of a portable bridge constructed of timber mats. The timber mat bridge installation will be performed in accordance with the specifications on the appropriate permits which shall be provided by the DNR. The installation and removal of the portable bridge will be the responsibility of the contract holder. Once the sale is purchased the contract holder and timber sale administrator will coordinate the timing of timber mat pick up and bridge installation requirements to provide access to the sale. Once the bridge is installed, it will be left in place for a reasonable span of time for all harvesting operations to be completed.

##### 4.1.3 - Slash and Earthen Piles (8/04)

Piles or windrows of earth along roads and landings that have been widened or constructed shall be leveled. Slash from road maintenance or construction, including stumps, shall be dispersed throughout the sale.

##### 4.1.6 - Road Construction (4/24)

Construction of new roads or improvements of existing roads shall be done in such a way as to minimize the environmental and visual impacts. Merchantable trees shall be cut and utilized unless otherwise directed. Non-merchantable trees shall be severed and laid flat on the ground. Slash shall be scattered, not left in windrows, and kept a minimum of 10 feet back from the road edge. Stumps shall be set upright, not left on edge, and be moved at least 10 feet away from the road edge. Disturbed soil shall be feathered into the woods and not left in berms or windrows.

##### 4.1.7 - Road Closure (10/11)

All new roads built into the sale must be blocked to vehicle traffic within 30 days of completion of hauling. Overgrown roads that are reopened shall be considered new roads. In general, this will require constructing a four (4') foot high berm of stumps and logs covered with earth. Stumps and brush must be placed along the remainder of the trail. Berms must also be placed at intervals of not over 50 feet and at all junctions. These roads must be rendered impassable to cars and trucks. Temporary

berms may be required if no sale activity occurs for 30 or more consecutive days. Contact the Sale Administrator for specific details of design and placement.

#### 4.2 - Maintenance

##### 4.2.1 - Hauling Restriction (12/08)

Hauling may be restricted on forest roads and constructed roads by the Unit Manager or his/her representative. The restriction may occur during spring breakup or may occur during wet weather conditions.

##### 4.2.4 - Grading (10/16)

For completion of the sale, state forest roads must be graded. In general, this will require a road grader or bulldozer to shape up the roads after forest products have been hauled off site. This includes cleaning of drainage areas, grading, crowning and filling with gravel, if necessary. The grading equipment to be used must be approved by the Unit Manager or his/her representative.

##### 4.2.5 - Two Wheel Drive Condition (2/04)

All existing trail roads on and adjacent to the Sale Area must be passable by two-wheel drive traffic for the duration of the sale.

#### 4.4 - Access

##### 4.4.1 - Private property access (3/11)

Permission for access across private land is the responsibility of the Purchaser. If access through private land is utilized a copy of the written permission from the private landowner must be given to the Unit Manager prior to the beginning of operations.

### 5 - Operations

#### 5.1 - Notification

##### 5.1.1 - Pre-sale Conference (10/25)

A pre-sale conference on site between the Purchaser and Sale Administrator is required prior to beginning any operations a Payment Unit to determine landing and road locations. The Unit Manager or his/her representative must be contacted at least 10 days in advance to schedule the conference.

##### 5.1.4 - Post-Sale Conference (10/16)

A post-sale conference on site between the Purchaser and sale administrator is required 5 days prior to the completion of active logging operations to determine clean-up and repair of landings, road edges, and the fulfillment of other contract specifications.

#### 5.2 - Conduct of Operations

##### 5.2.1 - Slash

###### 5.2.1.8 - Slash Height (12/08)

No slash or tree tops may exceed 24 inches in height.

###### 5.2.1.10 - No Slash in Openings (5/10)

No brush or logging debris is to be left in the maintained wildlife opening which is indicated by G on the Timber Sale Map. Any damage to the opening shall be repaired according to specifications of the Unit Manager or his/her representative.

##### 5.2.2 - Hazard Trees/Snags

###### 5.2.2.1 - Den Trees (10/16)

Obvious hollow and/or den trees shall be protected and left standing unless they are a safety hazard.

##### 5.2.3 - Operating Restrictions

###### 5.2.3.1 - Operating Restrictions (9/11)

Within Payment Unit(s) 1, 2, and 3: skidding and hauling may only occur during dry summer or frozen winter conditions. This restriction is necessary to prevent rutting and protect wet areas and sensitive soils. These restrictions may be waived if access to the payment units is through private.

#### 5.2.3.4 - Oak Wilt Restriction, No Exceptions (1/18)

Within Payment Unit(s) 1, 2, and 3, cutting, skidding, hauling within the sale and brushing of access roads to the sale are not permitted during the period of April 15 to July 15. No exceptions will be granted. This is necessary to reduce the spread of oak wilt.

#### 5.2.3.5 - Oak Wilt Restriction (1/18)

Within Payment Unit 4 unless changed by written agreement, cutting, skidding, hauling within the sale and brushing of access roads to the sale are not permitted during the period of April 15 to July 15. Operations may be allowed if specific steps are taken to prevent damaging uncut oak during the high-risk period. Those steps may include completing all road brushing before April 15 and clearing a tree-length buffer along uncut oak cover before April 15. This is necessary to reduce the spread of oak wilt. For more information, contact the Unit Manager or his/her representative.

### 5.2.4 - Dead and Down Creation

#### 5.2.4.4 - Dead and Down Creation, Grouse (6/18)

To encourage grouse and other wildlife, in Payment Unit(s) 2 and 3, leave one, 12" diameter or larger log-length (8 foot minimum) piece on the ground for every two (2) acres and at least four (4) large brush piles per acre. These will be evenly scattered throughout the Payment Unit.

#### 5.2.17 - Timber Mats and Interlocking Composite Mats (5/23)

A road between Payment Units 2 and 4 may require extra protection such as that afforded by timber mats, interlocking composite mats, or another approved system. Approximately 500 feet of road or trail will need extra protection at locations shown on the Timber Sale Map. If available, mats may be borrowed from the DNR. A Timber Sale Contract Amendment will be used to document the Purchaser's use of the DNR's mats. Contact the Sale Administrator regarding availability and pick-up. Timber mats are available from various field offices. Composite mats are only available from the Grayling field office and the Marquette ICC. The Purchaser is responsible for picking up and hauling the mats to and from the site. The composite mats will require DNR staff onsite for installation and removal. Contact the Sale Administrator to schedule at least 30 days before desired install/removal date. All mats must be cleaned prior to drop off. This may include, but is not limited to, power washing and brushing to remove mud and debris. A charge of \$700.00 per timber mat and \$2,000.00 per composite mat will be assessed for all damaged or non-returned mats. Damage for the crane/timber mats is defined as three or more broken cants. Damage for the composite mats is defined as cracked or broken mats.

#### 5.2.29 - Shrub Protection (1/20)

Do not cut or damage hawthorn, witch-hazel, dogwood or juneberry. These woody-shrub plants are highly beneficial to various wildlife species.

#### 5.2.32 - Decking/Landing Restoration (9/13)

All decking and landing areas must have the surface area restored to a condition equal to or better than before. This is to ensure the proper regeneration of the stand. Wood debris, chips and "cookies" from trimmings must be removed or scattered away from landing and loading areas and may not be windrowed on the edge. Also, the landing must be seeded with 50 pounds of clover, rye, and wheat per instruction from the administrator.

#### 5.2.38 - No Decking Against Live Trees (2/04)

Cut products may not be decked against unmarked or designated leave trees.

### 5.3 - Stream Protection

#### 5.3.1 - Operating Near Stream (1/25)

No tracked or wheeled vehicles shall be operated within 100 feet of Apple Creek, except at an approved crossing.

### 5.4 - Soil Protection

#### 5.4.1 - Rutting Restriction, General (7/16)

Operations are to cease immediately if equipment and weather conditions result in rutting of roads and/or skid trails which are 12 inches or greater in depth and 50 feet in length. The Unit Manager or his/her representative may restrict hauling and/or skidding if ruts exceed the specified depth. With the Unit Manager or his/her representative's approval, the Purchaser may return to the area when the risk of rutting has decreased.

## 6 - Safety and Fire Prevention

## 6.2 - Signing

### 6.2.1 - Road Posting (10/20)

The Purchaser is responsible for posting and maintaining caution signs on Kolarvic Rd prior to beginning operations. The road must be posted at appropriate distances from the Sale Area to warn of logging activity and truck traffic. Signs must be removed when harvest operations are suspended or completed. The Purchaser will provide these signs.



### TIMBER SALE MAP

This information provided by authority of Part 525, 1994 PA 451, as amended.

Sale Number  
**63-012-25**

Date  
**09/03/2025**

Forest Management Unit	County	Mapped By: Adamczyk
Cadillac Mgt Unit	Wexford	Cruised By: Manton Office

Scale	Page	Of
1:15,840	1	1

Township	Range	Section(s) and Subdivision(s)
24N	10W	Sec. 21 S1/2SW,SWSE; Sec. 28 NW,N1/2NE,SWNE,E1/2SW,W1/2SE;

Cover Type			
A = Aspen	J = Jack Pine	O = Oak	U = Upland Brush
B = Paper Birch	K = Rock	P = Lowland Poplar	UM = Upland Mix Forest
C = Cedar	L = Lowland Brush	Q = Mixed Swamp Conifer	V = Bog or Marsh
D = Treed Bog	LM = Lowland Mix Forest	R = Red Pine	W = White Pine
E = Swamp Hardwoods	M = Maple, Beech, Birch	S = Black Spruce	X = Non Stocked
F = Spruce/Fir	MC = Mixed Conifer	T = Tamarack	Y = Sand
G = Grass	MD = Mixed Deciduous	Z = Water	
H = Hemlock	N = Marsh		

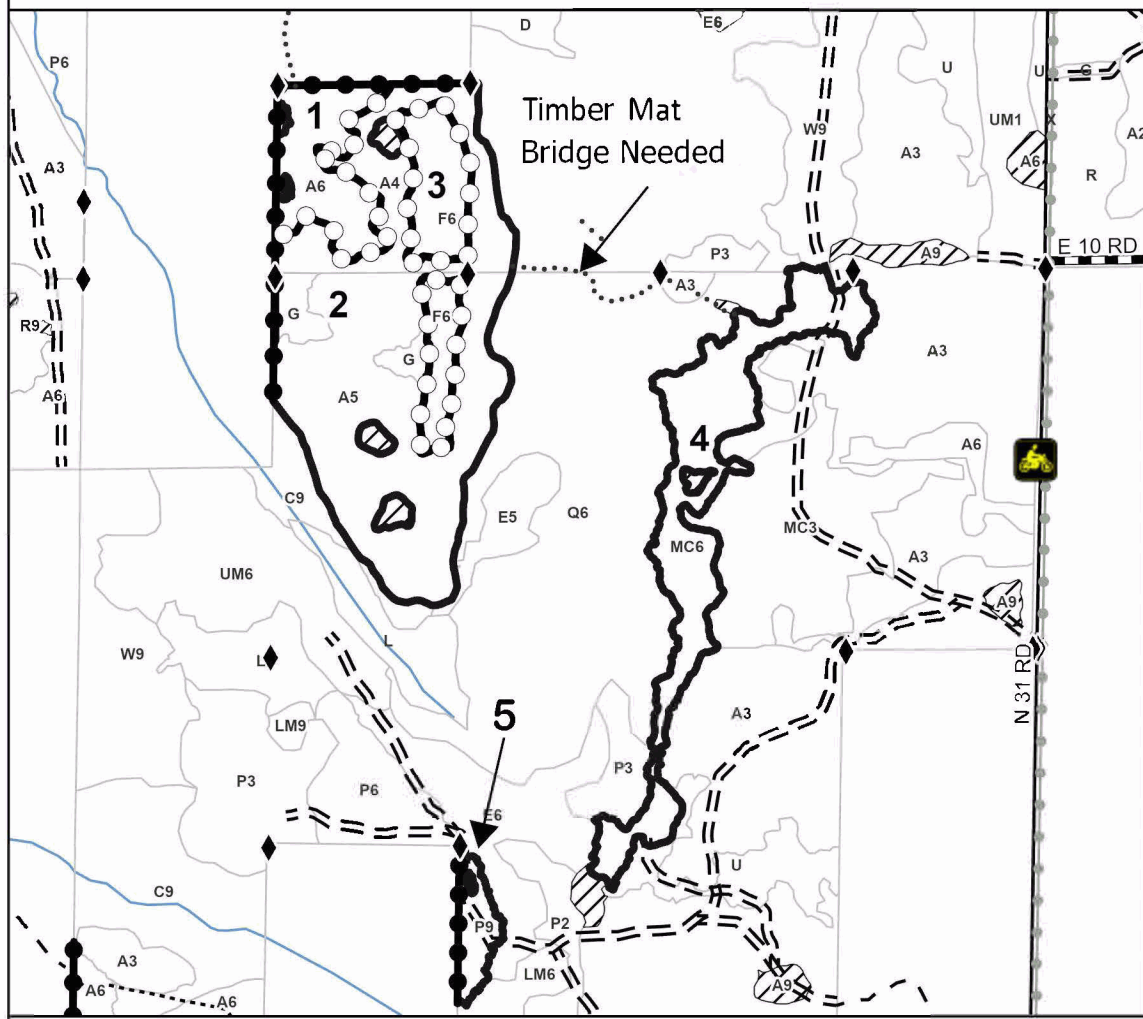
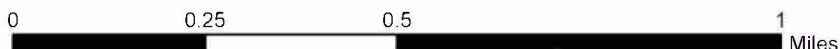
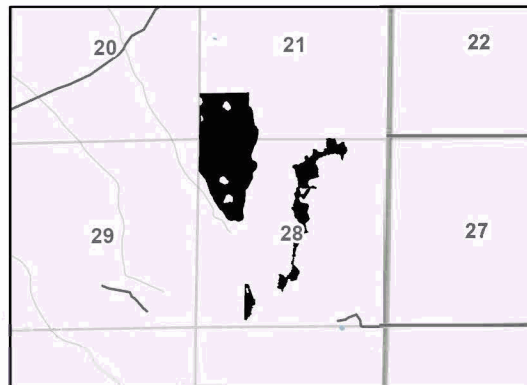
Density	
0 = Non Stocked	5 = Pole Timber Medium
1 = Seedling Sapling Poor	6 = Pole Timber Well
2 = Seedling Sapling Medium	7 = Saw Timber Poor
3 = Seedling Sapling Well	8 = Saw Timber Medium
4 = Pole Timber Poor	9 = Saw Timber Well

Payment Unit Number	Acres
1	14.2
2	74.4
3	15.1
4	32.8
5	4.6

## Two Headed Racer

**141.1 Acres**

### Locator Map 1:64,000



### Legend

- Payment Unit
- Private Line (Blue)
- Payment Unit (Yellow)
- Administrative Access
- Retention Areas
- Forest Access Route
- Administrative Access Only
- Paved Road
- Government Gravel/Dirt
- Private Gravel/Dirt
- Survey Grade Corner

Use QR Code to open Map in App





## TIMBER SALE INFORMATION

### Bowl Choker Mix (63-053-25)

T21N, R05W, SEC. 26; T21N, R05W, SEC. 27; T21N, R05W, SEC. 28.  
Missaukee County (Advertised Price \$309,132.90)

SALE NOTE: The Sale Area has received damage from windthrow in Payment Unit 7 and oak decline and/or oak wilt in all Payment Units.

A recreation site such as a trail, pathway, or campground is within the sale area or the vicinity. Certain restrictions/specifications may be applicable including time restrictions.

A timber sale contract for this lump sum, sealed bid timber sale will be awarded to the responsible bidder offering the highest sealed bid price. All units of volume listed below were estimated using the Inventory Manager computer program and the new Michigan taper model. Bids must be at or above the following advertised price for each product and species:

<u>PRODUCTS &amp; SPECIES</u>	<u>ESTIMATED UNITS*</u>	<u>ADVERTISED PRICE</u>
<b>Sawtimber</b>		
Black Cherry	10.8 MBF	\$ 128.00 / MBF
Mixed Aspen	286.7 MBF	\$ 119.00 / MBF
Red Maple	224.3 MBF	\$ 140.00 / MBF
Red Oak	921.7 MBF	\$ 174.00 / MBF
Red Pine	50.1 MBF	\$ 117.00 / MBF
White Oak	63.9 MBF	\$ 110.00 / MBF
White Pine	134.4 MBF	\$ 47.00 / MBF
<b>Pulpwood</b>		
Balsam Fir	16 Cords	\$ 33.80 / Cord
Black Cherry	47 Cords	\$ 14.40 / Cord
Jack Pine	80 Cords	\$ 12.80 / Cord
Mixed Aspen	648 Cords	\$ 18.60 / Cord
Mixed Oak	1,075 Cords	\$ 27.70 / Cord
Red Maple	1,023 Cords	\$ 14.40 / Cord
Red Pine	52 Cords	\$ 46.40 / Cord
White Pine	80 Cords	\$ 17.90 / Cord

\* The total volume is statistically estimated within plus (+) or minus (-) 9.50 percent. There are an estimated 6,984 cords on this timber sale, plus or minus 664 cords at the 95% confidence level. The estimated units are final and not subject to adjustment. Prospective bidders are urged to examine this timber and to make their own estimates of quantity and quality.

### **BOND AND PAYMENT SCHEDULE:**

1. A bond in the amount of \$15,457.00 to insure faithful performance of the conditions of the contract will be deposited by the successful bidder within 21 days of the sale award.
2. Cutting in any sale or unit without the required advance payment would be considered a trespass.
3. Total payment must be paid in advance or according to the following schedule :
  - (a) Ten percent (10%) of the sale value must be paid within 21 days of the sale award.
  - (b) The 10% down payment will be credited towards the first unit cut.
  - (c) Payment for each of the following units must be made before cutting begins in that unit:

PAYMENT UNIT NUMBER	PERCENT OF TOTAL SALE VALUE
01	4.3%
02	5.6%
03	1.5%
04	18.4%
05	22.4%
06	13.7%
07	2.0%
08	11.3%
09	5.4%
10	15.4%

4. If no cutting takes place, the 10% down payment will not be refunded.
5. Operations on the contract issued will terminate on 12/31/2029.

### **SALE STATISTICS**

Volumes were calculated in cubic feet using the Michigan taper model. Cubic foot volume includes all wood inside bark for the product indicated. For display purposes, cubic feet were converted to cords and MBF using a simple conversion factor, e.g. 79 cubic feet per cord and 185 cubic feet per MBF. The cubic foot volumes are precise; the cords and MBF volumes are not. Cubic foot volume cannot be directly converted to cords or boards with precision.

### SALE VOLUMES

The total estimated sale volume may not equal the sum of the species/products due to the nature of statistical calculations associated with double sampling methodology.

VOLUME			STATISTICAL RANGE IN CORDS	
TOTAL CUBIC FEET	TOTAL CORDS	PERCENT ERROR	MINIMUM	MAXIMUM
551,737	6,984	9.50%	6,320	7,648

### VDU VOLUMES

A VDU is a Volume Determination Unit. Volumes and their associated statistics are calculated at the VDU level and summarized to the sale level. There is often a one to one relationship between a VDU and a Payment Unit, but not always, depending on the cruise design. Refer to the VDU TO PAYMENT UNIT table.

VDU	VOLUME		PERCENT ERROR	RANGE IN CORDS	
	TOTAL CUBIC FEET	TOTAL CORDS		MINIMUM	MAXIMUM
35	30,550	387	42.59%	222	551
39	47,956	607	39.59%	367	847
42	9,580	121	71.58%	34	208
44	172,209	2,180	15.15%	1,850	2,510
45	130,742	1,655	24.46%	1,250	2,060
53	19,409	246	55.37%	110	382
55	59,328	751	24.11%	570	932
58	32,063	406	27.64%	294	518
60	49,899	632	27.29%	459	804
<b>TOTAL:</b>	<b>551,737</b>	<b>6,984</b>		<b>5,155</b>	<b>8,813</b>

### VDU TO PAYMENT UNIT

When a VDU is associated with more than one Payment Unit (PU), the VDU volumes are assigned to the PU based on acres of the VDU within the PU.

VDU	VDU ACRES	PU	PU ACRES
<b>TOTAL:</b>			

**DESCRIPTION OF TIMBER BY PAYMENT UNIT (PU)**

PU	MARKET GROUP	PRODUCT	QUANTITY	UNIT	ACRES	ADVERTISE PRICE	
1	Mixed Aspen	Sawtimber	2.9	MBF	7.2	\$13,324.50	
	<i>Quaking Aspen</i>		2.9	<i>MBF</i>			
	Red Maple		1.6	MBF			
	Red Oak		33.6	MBF			
	Red Pine		9.2	MBF			
	White Pine		91.2	MBF			
	Black Cherry		Pulpwood	3			Cords
	Mixed Aspen			3			Cords
	<i>Quaking Aspen</i>			3			<i>Cords</i>
	Mixed Oak			21			Cords
	<i>Red Oak</i>			21			<i>Cords</i>
	Red Maple			5			Cords
	Red Pine			9			Cords
	White Pine			21			Cords
2	Black Cherry	Sawtimber	2.8	MBF	15.6	\$17,378.90	
	Mixed Aspen		68.7	MBF			
	<i>Quaking Aspen</i>		68.7	<i>MBF</i>			
	Red Maple		2.8	MBF			
	White Oak		2.7	MBF			
	White Pine		21.4	MBF			
	Balsam Fir		Pulpwood	16			Cords
	Black Cherry			16			Cords
	Mixed Aspen			295			Cords
	<i>Quaking Aspen</i>			295			<i>Cords</i>
	Mixed Oak			9			Cords
	<i>Red Oak</i>			6			<i>Cords</i>
	<i>White Oak</i>			3			<i>Cords</i>
	Red Maple			26			Cords
White Pine	15	Cords					
3	Black Cherry	Sawtimber	2.8	MBF	6.3	\$4,561.90	
	Red Maple		6.5	MBF			
	Red Oak		12.6	MBF			
	Black Cherry		Pulpwood	4			Cords
	Mixed Oak			7			Cords
	<i>Red Oak</i>			7			<i>Cords</i>
	Red Maple			59			Cords
4	Black Cherry	Sawtimber	2.8	MBF	28.6	\$56,844.40	
	Mixed Aspen		17.5	MBF			
	<i>B. T. Aspen</i>		17.5	<i>MBF</i>			
	Red Maple		92.1	MBF			
	Red Oak		168.9	MBF			
	White Oak		29.4	MBF			
	White Pine		2.4	MBF			
	Black Cherry		Pulpwood	5			Cords
	Mixed Aspen			32			Cords
	<i>B. T. Aspen</i>			32			<i>Cords</i>
	Mixed Oak			157			Cords
	<i>Red Oak</i>			118			<i>Cords</i>
	<i>White Oak</i>			39			<i>Cords</i>
	Red Maple			256			Cords
White Pine	4	Cords					
5	Mixed Aspen	Sawtimber	160.7	MBF	26.8	\$69,398.40	
	<i>B. T. Aspen</i>		160.7	<i>MBF</i>			
	Red Maple		33.7	MBF			
	Red Oak		137.8	MBF			
	Red Pine		40.9	MBF			

**DESCRIPTION OF TIMBER BY PAYMENT UNIT (PU), CON'T**

PU	MARKET GROUP	PRODUCT	QUANTITY	UNIT	ACRES	ADVERTISE PRICE
5 con't	White Oak	Sawtimber	2.0	MBF		
	Mixed Aspen	Pulpwood	269	Cords		
	<i>B. T. Aspen</i>		269	<i>Cords</i>		
	Mixed Oak		223	Cords		
	<i>Red Oak</i>		215	<i>Cords</i>		
	<i>White Oak</i>		8	<i>Cords</i>		
	Red Maple		237	Cords		
	Red Pine		40	Cords		
	White Pine		7	Cords		
6	Red Oak		Sawtimber	201.2	MBF	29.6
	White Oak	Pulpwood	5.2	MBF		
	Mixed Aspen		3	Cords		
	<i>B. T. Aspen</i>		3	<i>Cords</i>		
	Mixed Oak		213	Cords		
	<i>Red Oak</i>		210	<i>Cords</i>		
	<i>White Oak</i>		3	<i>Cords</i>		
	Red Maple		48	Cords		
	Red Pine		3	Cords		
7	Mixed Aspen		Sawtimber	20.4	MBF	22.4
	<i>B. T. Aspen</i>	Pulpwood	20.4	<i>MBF</i>		
	Red Maple		4.6	MBF		
	Red Oak		1.3	MBF		
	Jack Pine		80	Cords		
	Mixed Aspen		15	Cords		
	<i>B. T. Aspen</i>		15	<i>Cords</i>		
	Mixed Oak		15	Cords		
	<i>Red Oak</i>		8	<i>Cords</i>		
	<i>White Oak</i>		7	<i>Cords</i>		
	Red Maple		73	Cords		
White Pine	2		Cords			
8	Mixed Aspen	Sawtimber	1.9	MBF	25.7	\$34,958.70
	<i>B. T. Aspen</i>	Pulpwood	1.9	<i>MBF</i>		
	Red Maple		2.9	MBF		
	Red Oak		165.0	MBF		
	Mixed Aspen		3	Cords		
	<i>B. T. Aspen</i>		3	<i>Cords</i>		
	Mixed Oak		168	Cords		
	<i>Red Oak</i>		168	<i>Cords</i>		
	Red Maple		63	Cords		
9	Red Maple		Sawtimber	3.1	MBF	56.5
	Red Oak	Pulpwood	60.1	MBF		
	White Pine		17.4	MBF		
	Black Cherry		15	Cords		
	Mixed Aspen		2	Cords		
	<i>B. T. Aspen</i>		2	<i>Cords</i>		
	Mixed Oak		131	Cords		
	<i>Red Oak</i>		131	<i>Cords</i>		
	Red Maple		42	Cords		
White Pine	27		Cords			
10	Black Cherry	Sawtimber	2.4	MBF	23.9	\$47,516.50
	Mixed Aspen	Pulpwood	14.6	MBF		
	<i>B. T. Aspen</i>		14.6	<i>MBF</i>		
	Red Maple		77.0	MBF		
	Red Oak		141.2	MBF		
	White Oak		24.6	MBF		
	White Pine		2.0	MBF		

**DESCRIPTION OF TIMBER BY PAYMENT UNIT (PU), CON'T**

PU	MARKET GROUP	PRODUCT	QUANTITY	UNIT	ACRES	ADVERTISE PRICE
10 con't	Black Cherry	Pulpwood	4	Cords		
	Mixed Aspen		26	Cords		
	<i>B. T. Aspen</i>		26	<i>Cords</i>		
	Mixed Oak		131	Cords		
	<i>Red Oak</i>		99	<i>Cords</i>		
	<i>White Oak</i>		32	<i>Cords</i>		
	Red Maple		214	Cords		
	White Pine		4	Cords		
TOTAL:			1,691.9	MBF		
TOTAL:			3,021	Cords		

## Sale Specific Conditions & Requirements

Sale Name: Bowl Choker Mix

Sale Number: 63-053-25 Seq#: 1

### 1 - Sale Area

#### 1.2 - Boundaries

##### 1.2.1 - Painted Boundaries (9/19)

The sale boundary and Payment Unit boundaries are marked and identified by blue, red and yellow paint. Exterior sale boundary lines against private property are marked with blue paint. Exterior sale boundary lines against state are marked with red paint. Interior Payment Unit boundaries are marked with yellow paint. Retention patches are marked with red paint; no harvesting activities may occur within these areas. The painted boundary line trees are not Included Timber and are to be protected. Yellow painted trees designating an interior Payment Unit boundary are only to be cut when all surrounding Payment Units have been paid.

### 2 - Timber Specifications

#### 2.1 - Included Timber

##### 2.1.1 - Clearcut Unit(s) with Unmerchantable Trees (6/14)

Within Payment Unit(s) 7 and 8, cut all trees that are two (2) inches or more at DBH.

Within payment unit 8, do not cut white oak, white pine and trees with green paint.

##### 2.1.2 - Clearcut Unit(s) w/o Unmerchantable Trees (8/11)

Within Payment Unit(s) 2, 5, and 6, cut all trees which meet minimum piece specifications in 2.2 Utilization except, do not cut trees marked with green paint.

Within Payment Unit 2 do not cut white pine 18 inches or greater at DBH.

Within Payment Unit 5, do not cut red pine 10 inches or less at DBH.

##### 2.1.4 - Designated Timber Unit(s) (6/17)

Within Payment Unit(s) 3, white pine and red oak 12 inches or greater at DBH and all other species 2 inches and greater at DBH are designated for cutting except white oak and trees marked with green paint.

##### 2.1.5 - Overstory Removal Unit(s) (8/11)

Within Payment Unit(s) 1, 4, 9, and 10, all trees which meet minimum piece specifications in 2.2 Utilization, are designated for cutting except trees marked with green paint.

Within Payment Units 1 and 9, do not cut white oak.

### 4 - Transportation

#### 4.1 - Construction

##### 4.1.3 - Slash and Earthen Piles (8/04)

Piles or windrows of earth along roads and landings that have been widened or constructed shall be leveled. Slash from road maintenance or construction, including stumps, shall be dispersed throughout the sale.

##### 4.1.12 - No New Roads (1/12)

No new roads will be permitted in any Payment Unit. All operations are limited to existing roads. Only Skid trails will be allowed.

#### 4.2 - Maintenance

##### 4.2.1 - Hauling Restriction (12/08)

Hauling may be restricted on forest roads by the Unit Manager or his/her representative. The restriction may occur during spring breakup or may occur during wet weather conditions.

#### 4.2.4 - Grading (10/16)

For completion of the sale, state forest roads must be graded. In general, this will require a road grader or bulldozer to shape up the roads after forest products have been hauled off site. This includes cleaning of drainage areas, grading, crowning and filling with gravel, if necessary. The grading equipment to be used must be approved by the Unit Manager or his/her representative.

#### 4.2.5 - Two Wheel Drive Condition (2/04)

All existing trail roads on and adjacent to the Sale Area must be passable by two-wheel drive traffic for the duration of the sale.

### 4.3 - Public Right-of-Way

#### 4.3.2 - County R-O-W (12/06)

The County must be contacted prior to crossing or harvesting in the County Road R-O-W.

## 5 - Operations

### 5.1 - Notification

#### 5.1.1 - Pre-sale Conference (10/25)

A pre-sale conference on site between the Purchaser and Sale Administrator is required prior to beginning any operations a Payment Unit to determine landing and road locations. The Unit Manager or his/her representative must be contacted at least 10 days in advance to schedule the conference.

#### 5.1.4 - Post-Sale Conference (10/16)

A post-sale conference on site between the Purchaser and sale administrator is required 5 days prior to the completion of active logging operations to determine clean-up and repair of landings, road edges, and the fulfillment of other contract specifications.

### 5.2 - Conduct of Operations

#### 5.2.1 - Slash

##### 5.2.1.2 - Slash Removal

###### 5.2.1.2.1 - Slash Removal, Right-of-Way (9/16)

All slash must be removed at least 10 feet from the cleared right-of-way of forest roads.

##### 5.2.1.8 - Slash Height (12/08)

No slash or tree tops may exceed 24 inches in height.

##### 5.2.1.11 - Slash for Reforestation (3/21)

To facilitate reforestation, the Sale Area shall be left with slash evenly distributed. Bunched tops within the cutting area shall be broken up and scattered. Stumps shall be cut low to the ground. Processing sites shall not be left with windrows or compacted layer of slash; tops and slash from these sites shall be hauled back into the cut area and scattered to the point that the ground surface is easily visible.

#### 5.2.2 - Hazard Trees/Snags

##### 5.2.2.1 - Den Trees (10/16)

Obvious hollow and/or den trees shall be protected and left standing unless they are a safety hazard. All standing dead trees must be protected and left standing unless they are a safety hazard.

#### 5.2.3 - Operating Restrictions

##### 5.2.3.5 - Oak Wilt Restriction (1/18)

Within all Payment Units unless changed by written agreement, cutting, skidding, hauling within the sale and brushing of access roads to the sale are not permitted during the period of April 15 to July 15. Operations may be allowed if specific steps are taken to prevent damaging uncut oak during the high-risk period. Those steps may include completing all road brushing before April 15 and clearing a tree-length buffer along uncut oak cover before April 15. This is necessary to reduce the spread of oak wilt. For more information, contact the Unit Manager or his/her representative.

#### 5.2.32 - Decking/Landing Restoration (9/13)

All decking and landing areas must have the surface area restored to a condition equal to or better than before. This is to ensure the proper regeneration of the stand. Wood debris, chips and "cookies" from trimmings must be removed or scattered away from landing and loading areas and may not be windrowed on the edge.

#### 5.2.38 - No Decking Against Live Trees (2/04)

Cut products may not be decked against unmarked or designated leave trees.

#### 5.2.39 - ORV Trail/Route Protection (4/18)

The Leota Trail is an ORV trail or route and is shown on the Timber Sale Map. Do not cut trees or damage posts with yellow ORV markers. All stumps within five (5) feet of the trail must be cut flush with the ground. Maintain a 20-foot-wide slash, debris, and rut free zone daily using the ORV trail or route as the centerline. Do not run equipment down the ORV trail or route. Skidding across the trail or route may only occur in locations approved by the Sale Administrator.

### 5.4 - Soil Protection

#### 5.4.1 - Rutting Restriction, General (7/16)

Operations are to cease immediately if equipment and weather conditions result in rutting of roads and/or skid trails which are 12 inches or greater in depth and 50 feet in length. The Unit Manager or his/her representative may restrict hauling and/or skidding if ruts exceed the specified depth. With the Unit Manager or his/her representative's approval, the Purchaser may return to the area when the risk of rutting has decreased.

#### 5.4.4 - Slope Protection (9/19)

Skid trails and roads on slopes shall be water barred with slash, stumps, and/or clean straw bales native to the area as soon as use is complete to prevent erosion.

### 5.6 - Debris and Waste Material

#### 5.6.4 - Equipment Cleaning (2) (11/24)

For purposes of this provision, "Off-Road Equipment" includes all logging and construction machinery, except for log trucks, chip vans, service vehicles, water trucks, pickup trucks, cars, and similar vehicles. Off-Road Equipment shall be cleaned of plant material and dirt prior to entering the sale area. Plant material includes leaves, stems, roots and seeds. Equipment shall be considered clean when a visual inspection does not disclose seeds, soil, vegetative matter, and other debris that could contain or hold seeds. This is to prevent the spread of invasive plant species.

### 5.8 - Protection of Endangered Species

#### 5.8.5 - Protection of Raptor Nests (3/13)

All trees with raptor nests will be protected if found during harvesting operations. Notification will be made to the Unit Manager or his/her representative who will notify the Wildlife Biologist so an onsite evaluation and recommendation can be made, if necessary.

## 6 - Safety and Fire Prevention

### 6.2 - Signing

#### 6.2.1 - Road Posting (10/20)

The Purchaser is responsible for posting and maintaining caution signs on county and/or forest roads prior to beginning operations. The road must be posted at appropriate distances from the Sale Area to warn of logging activity and truck traffic. Signs must be removed when harvest operations are suspended or completed. The Purchaser will provide these signs.

#### 6.2.3 - Recreational Trail Posting (10/20)

The Purchaser is responsible for posting and maintaining caution signs on the Leota Trail prior to beginning operations. The trail must be posted at appropriate distances from the Sale Area to warn of logging activity and truck traffic at both ends of the trail. Signs must be removed when harvest operations are suspended or completed. The Purchaser will provide these signs.

## 7 - Other Conditions

### 7.5 - Loss

7.5.1 - Deteriorating Timber (7/09)

The Sale Area has received damage from windthrow in Payment Unit 7 and oak decline and/or oak wilt in all Payment Units. The Purchaser should harvest the wood as soon as possible. The Department of Natural Resources is held free of responsibility of any further damage or deterioration due to delay in harvesting.



### TIMBER SALE MAP

This information provided by authority of Part 525, 1994 PA 451, as amended.

Sale Number  
**63-053-25**

Date  
**08/13/2025**

Forest Management Unit  
Cadillac Mgt Unit

County  
Missaukee

Mapped By: **Bonnette**  
Cruised By: **Bonnette**

Scale  
**1:10,000**

Page  
**1** Of  
**2**

Township **21N** Range **05W** Section(s) and Subdivision(s) **Sec. 26 NW,N1/2SW; Sec. 27 NE,S1/2SW,NESE,S1/2SE; Sec. 28 SE;**

#### Cover Type

- |                     |                         |                         |                        |
|---------------------|-------------------------|-------------------------|------------------------|
| A = Aspen           | J = Jack Pine           | O = Oak                 | U = Upland Brush       |
| B = Paper Birch     | K = Rock                | P = Lowland Poplar      | UM = Upland Mix Forest |
| C = Cedar           | L = Lowland Brush       | Q = Mixed Swamp Conifer | V = Bog or Marsh       |
| D = Tread Bog       | LM = Lowland Mix Forest | R = Red Pine            | W = White Pine         |
| E = Swamp Hardwoods | M = Maple, Beech, Birch | S = Black Spruce        | X = Non Stocked        |
| F = Spruce/Fir      | MC = Mixed Conifer      | T = Tamarack            | Y = Sand               |
| G = Grass           | MD = Mixed Deciduous    | Z = Water               |                        |
| H = Hemlock         | N = Marsh               |                         |                        |

#### Density

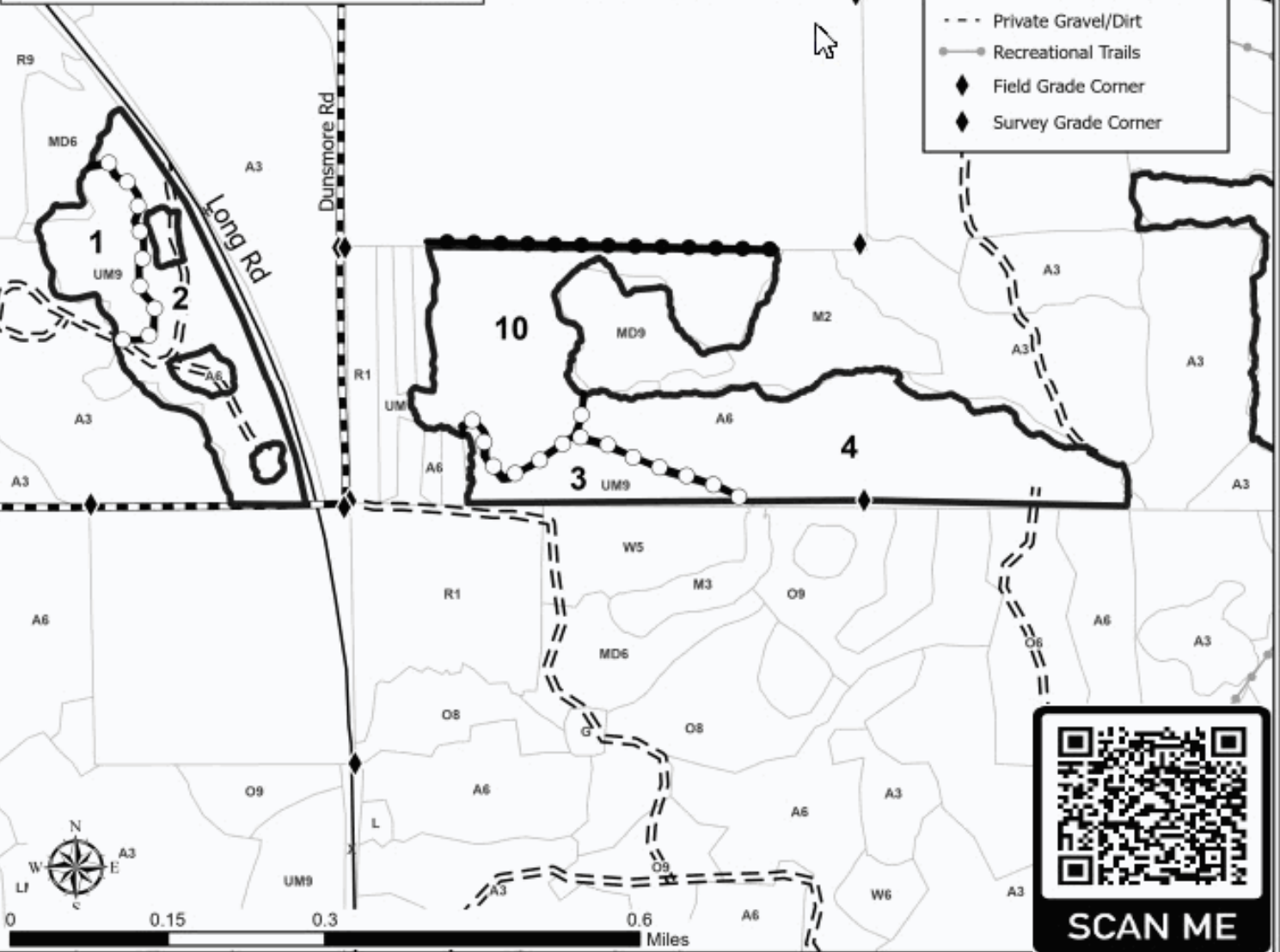
- |                             |                        |
|-----------------------------|------------------------|
| 0 = Non Stocked             | 5 = Pole Timber Medium |
| 1 = Seedling Sapling Poor   | 6 = Pole Timber Well   |
| 2 = Seedling Sapling Medium | 7 = Saw Timber Poor    |
| 3 = Seedling Sapling Well   | 8 = Saw Timber Medium  |
| 4 = Pole Timber Poor        | 9 = Saw Timber Well    |

Payment Unit Number	Acres	Payment Unit Number	Acres
1	7.2	6	29.6
2	15.6	7	22.4
3	6.3	8	25.7
4	28.6	9	56.5
5	26.8	10	23.9

**242.6 Acres**  
**Bowl Choker Mix**

#### Legend

- Sale Boundary - Red Paint
- Private Line (Blue)
- Payment Unit (Yellow)
- Primary Forest Road
- Forest Access Route
- Administrative Access Only
- Paved Road
- Government Gravel/Dirt
- Private Gravel/Dirt
- Recreational Trails
- Field Grade Corner
- Survey Grade Corner





### TIMBER SALE MAP

This information provided by authority of Part 525, 1994 PA 451, as amended.

Sale Number	Date
<b>63-053-25</b>	08/13/2025

Forest Management Unit	County	Mapped By:	Bonnette	Scale	Page	Of
Cadillac Mgt Unit	Missaukee	Cruised By:	Bonnette	1:15,840	2	2

Township	Range	Section(s) and Subdivision(s)
21N	05W	Sec. 26 NW,N1/2SW; Sec. 27 NE,S1/2SW,NESE,S1/2SE; Sec. 28 SE;

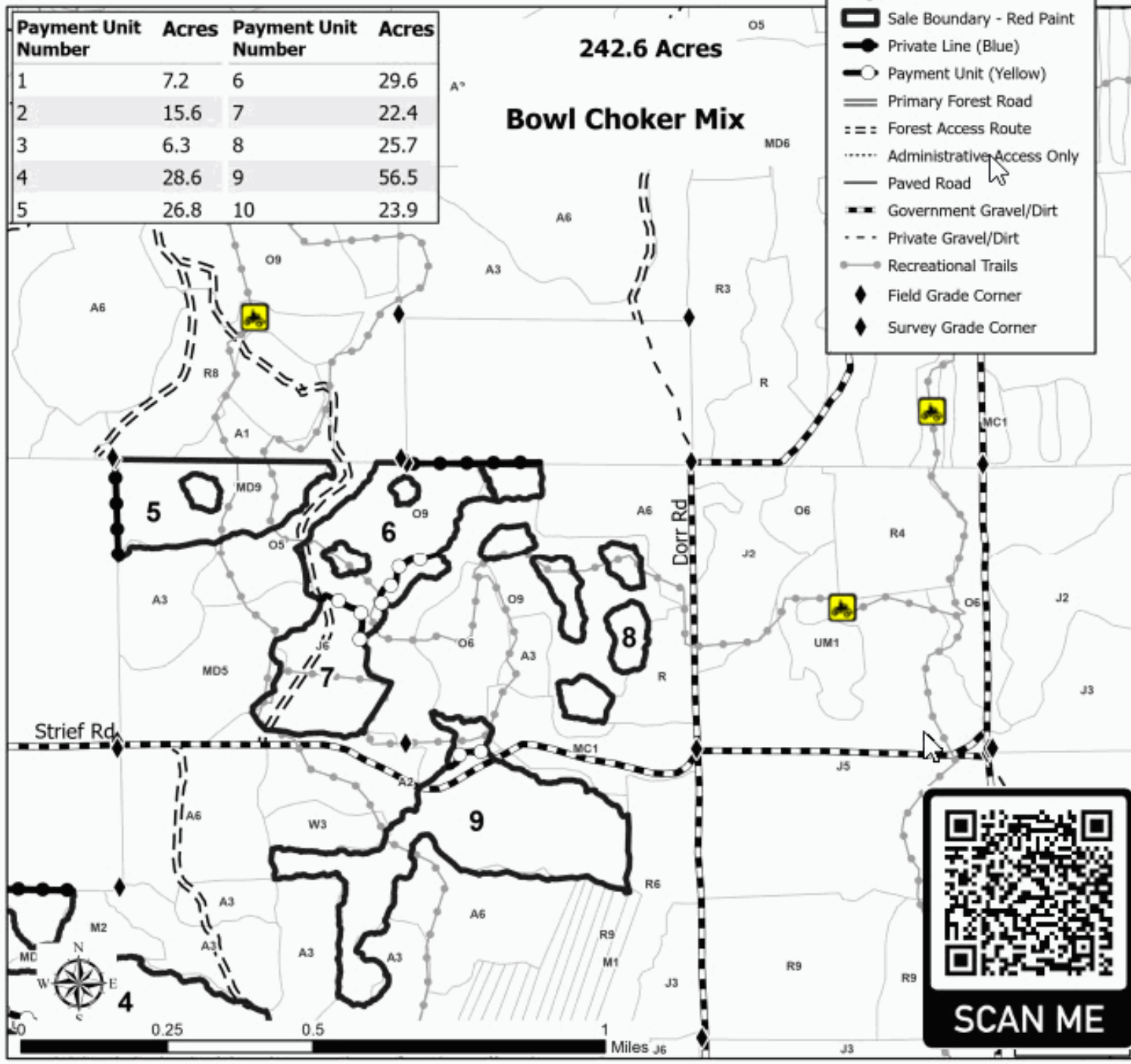
Cover Type			
A = Aspen	J = Jack Pine	O = Oak	U = Upland Brush
B = Paper Birch	K = Rock	P = Lowland Poplar	UM = Upland Mix Forest
C = Cedar	L = Lowland Brush	Q = Mixed Swamp Conifer	V = Bog or Marsh
D = Treed Bog	LM = Lowland Mix Forest	R = Red Pine	W = White Pine
E = Swamp Hardwoods	M = Maple, Beech, Birch	S = Black Spruce	X = Non Stocked
F = Spruce/Fir	MC = Mixed Conifer	T = Tamarack	Y = Sand
G = Grass	MD = Mixed Deciduous	Z = Water	
H = Hemlock	N = Marsh		

Density	
0 = Non Stocked	5 = Pole Timber Medium
1 = Seedling Sapling Poor	6 = Pole Timber Well
2 = Seedling Sapling Medium	7 = Saw Timber Poor
3 = Seedling Sapling Well	8 = Saw Timber Medium
4 = Pole Timber Poor	9 = Saw Timber Well

Payment Unit Number	Acres	Payment Unit Number	Acres
1	7.2	6	29.6
2	15.6	7	22.4
3	6.3	8	25.7
4	28.6	9	56.5
5	26.8	10	23.9

**242.6 Acres**  
**Bowl Choker Mix**

Legend	
	Sale Boundary - Red Paint
	Private Line (Blue)
	Payment Unit (Yellow)
	Primary Forest Road
	Forest Access Route
	Administrative Access Only
	Paved Road
	Government Gravel/Dirt
	Private Gravel/Dirt
	Recreational Trails
	Field Grade Corner
	Survey Grade Corner





Bowl Choker Mix (63-053-25)

T21N, R05W, SEC. 26; T21N, R05W, SEC. 27; T21N, R05W, SEC. 28; Missaukee

In response to the notice of sale to be held 3:00 p.m. (local time) on May 27, 2026, I am hereby submitting my sealed bid ( firm offer) for the following forest products to be cut. Bids for individual species must be at or above the advertised price. All non-responsive bid forms may be rejected.

<u>PRODUCTS &amp; SPECIES</u>	<u>ESTIMATED VOLUME*</u>	<u>ADVERTISED PRICE</u>	<u>BID PRICE/UNIT</u>
<b>Sawtimber</b>			
Black Cherry	10.8 MBF	\$ 128.00/MBF	\$ _____
Mixed Aspen	286.7 MBF	\$ 119.00/MBF	\$ _____
Red Maple	224.3 MBF	\$ 140.00/MBF	\$ _____
Red Oak	921.7 MBF	\$ 174.00/MBF	\$ _____
Red Pine	50.1 MBF	\$ 117.00/MBF	\$ _____
White Oak	63.9 MBF	\$ 110.00/MBF	\$ _____
White Pine	134.4 MBF	\$ 47.00/MBF	\$ _____
<b>Pulpwood</b>			
Balsam Fir	16 Cords	\$ 33.80/Cord	\$ _____
Black Cherry	47 Cords	\$ 14.40/Cord	\$ _____
Jack Pine	80 Cords	\$ 12.80/Cord	\$ _____
Mixed Aspen	648 Cords	\$ 18.60/Cord	\$ _____
Mixed Oak	1,075 Cords	\$ 27.70/Cord	\$ _____
Red Maple	1,023 Cords	\$ 14.40/Cord	\$ _____
Red Pine	52 Cords	\$ 46.40/Cord	\$ _____
White Pine	80 Cords	\$ 17.90/Cord	\$ _____

\*The volumes are statistically estimated within plus (+) or minus (-) 9.50 percent at 95% confidence level. These estimated volumes are final and not subject to adjustment. Prospective bidders are urged to examine this timber and to make their own estimates of quantity and quality.

I understand that any or all bids may be rejected. All bids must be signed and all bid items must be bid or the bid form may be rejected. I also understand that consideration and awarding a contract will be based upon my past performance and ability to complete the contract based upon equipment and staffing subject to my control.

FEDERAL ID: \_\_\_\_ - \_\_\_\_ - \_\_\_\_ or SOCIAL SECURITY NUMBER: \_\_\_\_ - \_\_\_\_ - \_\_\_\_

Company or individual bidding: \_\_\_\_\_

Company representative's name: \_\_\_\_\_

Address: \_\_\_\_\_

City: \_\_\_\_\_ State: \_\_\_\_\_ Zip: \_\_\_\_\_

IF AVAILABLE, PLEASE PLACE THE PERSONALIZED LABEL FROM YOUR PROSPECTUS IN THE ABOVE BOX.

Individual or company representative's signature: \_\_\_\_\_ Date: \_\_\_\_\_

Phone number : \_\_\_\_\_ Email (optional): \_\_\_\_\_

**THE WINNING BIDDER MUST COMPLETE THE VERIFICATION OF WORKER'S DISABILITY COMPENSATION ACT COMPLIANCE (ON REVERSE SIDE IF DOUBLE SIDED) WITHIN 21 DAYS OF SALE AWARD DATE**



# TIMBER SALE VERIFICATION OF WORKER'S DISABILITY COMPENSATION ACT COMPLIANCE

As required by Act 317, P.A. 1969 (Worker's Compensation) and  
Part 5 of Act 451 of 1994, as amended.

FOR DEPARTMENT USE ONLY	
Sale Number (XX - XXX - XX - XX)	
Forest Management Unit:	

## VERIFICATION OF WORKER'S DISABILITY COMPENSATION ACT COMPLIANCE

- This verification must be completed and submitted within 21 days of contract award and prior to the issuance of the timber sale contract.
- In addition, if boxes 2B or 2C are checked, then Notice of Exclusion or Certificate of Insurance must be submitted within twenty-one (21) days of the contract award and prior to the issuance of the timber sale contract.
- All information must be typed or printed except for written signatures.

Please Check Appropriate Categories:

1. My business is organized as (you **must** check one of the boxes below):
  - A.  Sole Proprietorship (individual)
  - B.  Partnership
  - C.  Corporation
2. You **must** check one of the boxes below:
  - A.  I certify my business is a sole proprietorship and it has no employees but the sole proprietor. I am not subject to the Worker's Compensation Laws.
  - B.  I certify my business has satisfied its obligation to the Worker's Compensation Act through the use of an approved Notice of Exclusion (BWC-337, Rev. 5/96). I will provide a copy of the Notice of Exclusion within 21 days of the contract award. (For questions or a copy of the BWC-337, please call the Worker's Compensation Bureau at 517 -322-1195).
  - C.  I certify my business has a Worker's Compensation Policy. I will provide an original Certificate of Insurance within twenty-one (21) days of the contract award.
3. If you have checked item 2(A) or 2(B), you **must** indicate the number of **both** full-time and part-time employees, other than yourself, including family members and active partners (if none, you must enter "0").

\_\_\_\_\_ Full-time Employees

\_\_\_\_\_ Part-time Employees

Name of Business		Federal ID (or) Social Security No.	
Address		Telephone (       )	
City	State	ZIP	

*I hereby certify that the above information is true and correct. I agree to notify the Michigan DNR of any changes that occur in factors affecting my coverage during any of my present and future operations.*

\_\_\_\_\_  
Signature of Owner or Authorized Representative

\_\_\_\_\_  
Title

\_\_\_\_\_  
Date

Please complete the "SEALED BID" information on the next page

Deadhead Pine Mix (63-007-25)

T24N, R10W, SEC. 29; T24N, R10W, SEC. 30; T24N, R10W, SEC. 32; Wexford

In response to the notice of sale to be held 3:00 p.m. (local time) on May 27, 2026, I am hereby submitting my sealed bid ( firm offer) for the following forest products to be cut. Bids for individual species must be at or above the advertised price. All non-responsive bid forms may be rejected.

<u>PRODUCTS &amp; SPECIES</u>	<u>ESTIMATED VOLUME*</u>	<u>ADVERTISED PRICE</u>	<u>BID PRICE/UNIT</u>
<b>Sawtimber</b>			
B. T. Aspen	41.0 MBF	\$ 119.00/MBF	\$ _____
Red Maple	13.4 MBF	\$ 140.00/MBF	\$ _____
Red Oak	305.4 MBF	\$ 174.00/MBF	\$ _____
Red Pine	337.6 MBF	\$ 117.00/MBF	\$ _____
White Pine	97.1 MBF	\$ 47.00/MBF	\$ _____
<b>Pulpwood</b>			
Mixed Aspen	54 Cords	\$ 18.60/Cord	\$ _____
Mixed Hardwood	154 Cords	\$ 14.40/Cord	\$ _____
Red Oak	277 Cords	\$ 27.70/Cord	\$ _____
Red Pine	412 Cords	\$ 46.40/Cord	\$ _____
White Pine	488 Cords	\$ 17.90/Cord	\$ _____

\*The volumes are statistically estimated within plus (+) or minus (-) 14.13 percent at 95% confidence level. These estimated volumes are final and not subject to adjustment. Prospective bidders are urged to examine this timber and to make their own estimates of quantity and quality.

I understand that any or all bids may be rejected. All bids must be signed and all bid items must be bid or the bid form may be rejected. I also understand that consideration and awarding a contract will be based upon my past performance and ability to complete the contract based upon equipment and staffing subject to my control.

FEDERAL ID: \_\_\_\_\_ - \_\_\_\_\_ or SOCIAL SECURITY NUMBER: \_\_\_\_\_ - \_\_\_\_\_ - \_\_\_\_\_

Company or individual bidding: \_\_\_\_\_

Company representative's name: \_\_\_\_\_

Address: \_\_\_\_\_

City: \_\_\_\_\_ State: \_\_\_\_\_ Zip: \_\_\_\_\_

IF AVAILABLE, PLEASE PLACE THE PERSONALIZED LABEL FROM YOUR PROSPECTUS IN THE ABOVE BOX.

Individual or company representative's signature: \_\_\_\_\_ Date: \_\_\_\_\_

Phone number : \_\_\_\_\_ Email (optional): \_\_\_\_\_

**THE WINNING BIDDER MUST COMPLETE THE VERIFICATION OF WORKER'S DISABILITY COMPENSATION ACT COMPLIANCE (ON REVERSE SIDE IF DOUBLE SIDED) WITHIN 21 DAYS OF SALE AWARD DATE**



FOR DEPARTMENT USE ONLY	
Sale Number (XX - XXX - XX - XX)	
Forest Management Unit:	

## TIMBER SALE VERIFICATION OF WORKER'S DISABILITY COMPENSATION ACT COMPLIANCE

As required by Act 317, P.A. 1969 (Worker's Compensation) and  
Part 5 of Act 451 of 1994, as amended.

### VERIFICATION OF WORKER'S DISABILITY COMPENSATION ACT COMPLIANCE

- This verification must be completed and submitted within 21 days of contract award and prior to the issuance of the timber sale contract.
- In addition, if boxes 2B or 2C are checked, then Notice of Exclusion or Certificate of Insurance must be submitted within twenty-one (21) days of the contract award and prior to the issuance of the timber sale contract.
- All information must be typed or printed except for written signatures.

Please Check Appropriate Categories:

1. My business is organized as (you **must** check one of the boxes below):
  - A.  Sole Proprietorship (individual)
  - B.  Partnership
  - C.  Corporation
2. You **must** check one of the boxes below:
  - A.  I certify my business is a sole proprietorship and it has no employees but the sole proprietor. I am not subject to the Worker's Compensation Laws.
  - B.  I certify my business has satisfied its obligation to the Worker's Compensation Act through the use of an approved Notice of Exclusion (BWC-337, Rev. 5/96). I will provide a copy of the Notice of Exclusion within 21 days of the contract award. (For questions or a copy of the BWC-337, please call the Worker's Compensation Bureau at 517 -322-1195).
  - C.  I certify my business has a Worker's Compensation Policy. I will provide an original Certificate of Insurance within twenty-one (21) days of the contract award.
3. If you have checked item 2(A) or 2(B), you **must** indicate the number of **both** full-time and part-time employees, other than yourself, including family members and active partners (if none, you must enter "0").

\_\_\_\_\_ Full-time Employees

\_\_\_\_\_ Part-time Employees

Name of Business		Federal ID (or) Social Security No.	
Address		Telephone (       )	
City	State	ZIP	

*I hereby certify that the above information is true and correct. I agree to notify the Michigan DNR of any changes that occur in factors affecting my coverage during any of my present and future operations.*

\_\_\_\_\_  
Signature of Owner or Authorized Representative

\_\_\_\_\_  
Title

\_\_\_\_\_  
Date

Please complete the "SEALED BID" information on the next page

Two Headed Racer (63-012-25)  
T24N, R10W, SEC. 21; T24N, R10W, SEC. 28; Wexford COUNTY

In response to the notice of sale to be held 3:00 p.m. (local time) on May 27, 2026, I am hereby submitting my sealed bid ( firm offer) for the following forest products to be cut. Bids for individual species must be at or above the advertised price. All non-responsive bid forms may be rejected.

<u>PRODUCTS &amp; SPECIES</u>	<u>ESTIMATED VOLUME*</u>	<u>ADVERTISED PRICE</u>	<u>BID PRICE/UNIT</u>
<b>Sawtimber</b>			
Mixed Aspen	119.5 MBF	\$ 119.00/MBF	\$ _____
Red Maple	68.9 MBF	\$ 140.00/MBF	\$ _____
White Pine	140.1 MBF	\$ 47.00/MBF	\$ _____
<b>Pulpwood</b>			
Balsam Fir	426 Cords	\$ 33.80/Cord	\$ _____
Black Cherry	58 Cords	\$ 14.40/Cord	\$ _____
Jack Pine	13 Cords	\$ 12.80/Cord	\$ _____
Mixed Aspen	1,181 Cords	\$ 18.60/Cord	\$ _____
Mixed Spruce	763 Cords	\$ 9.15/Cord	\$ _____
Red Maple	276 Cords	\$ 14.40/Cord	\$ _____
Red Pine	61 Cords	\$ 46.40/Cord	\$ _____
White Pine	164 Cords	\$ 17.90/Cord	\$ _____

\*The volumes are statistically estimated within plus (+) or minus (-) 13.12 percent at 95% confidence level. These estimated volumes are final and not subject to adjustment. Prospective bidders are urged to examine this timber and to make their own estimates of quantity and quality.

I understand that any or all bids may be rejected. All bids must be signed and all bid items must be bid or the bid form may be rejected. I also understand that consideration and awarding a contract will be based upon my past performance and ability to complete the contract based upon equipment and staffing subject to my control.

FEDERAL ID: \_\_\_\_\_ - \_\_\_\_\_ or SOCIAL SECURITY NUMBER: \_\_\_\_\_ - \_\_\_\_\_ - \_\_\_\_\_

Company or individual bidding: \_\_\_\_\_

Company representative's name: \_\_\_\_\_

Address: \_\_\_\_\_

City: \_\_\_\_\_ State: \_\_\_\_\_ Zip: \_\_\_\_\_

IF AVAILABLE, PLEASE PLACE THE PERSONALIZED LABEL FROM YOUR PROSPECTUS IN THE ABOVE BOX.

Individual or company representative's signature: \_\_\_\_\_ Date: \_\_\_\_\_

Phone number : \_\_\_\_\_ Email (optional): \_\_\_\_\_

**THE WINNING BIDDER MUST COMPLETE THE VERIFICATION OF WORKER'S DISABILITY COMPENSATION ACT COMPLIANCE (ON REVERSE SIDE IF DOUBLE SIDED) WITHIN 21 DAYS OF SALE AWARD DATE**



<b>FOR DEPARTMENT USE ONLY</b>
Sale Number (XX - XXX - XX - XX)
Forest Management Unit:

## TIMBER SALE VERIFICATION OF WORKER'S DISABILITY COMPENSATION ACT COMPLIANCE

*As required by Act 317, P.A. 1969 (Worker's Compensation) and  
Part 5 of Act 451 of 1994, as amended.*

### VERIFICATION OF WORKER'S DISABILITY COMPENSATION ACT COMPLIANCE

- This verification must be completed and submitted within 21 days of contract award and prior to the issuance of the timber sale contract.
- In addition, if boxes 2B or 2C are checked, then Notice of Exclusion or Certificate of Insurance must be submitted within twenty-one (21) days of the contract award and prior to the issuance of the timber sale contract.
- All information must be typed or printed except for written signatures.

Please Check Appropriate Categories:

1. My business is organized as (you **must** check one of the boxes below):
  - A.  Sole Proprietorship (individual)
  - B.  Partnership
  - C.  Corporation
2. You **must** check one of the boxes below:
  - A.  I certify my business is a sole proprietorship and it has no employees but the sole proprietor. I am not subject to the Worker's Compensation Laws.
  - B.  I certify my business has satisfied its obligation to the Worker's Compensation Act through the use of an approved Notice of Exclusion (BWC-337, Rev. 5/96). I will provide a copy of the Notice of Exclusion within 21 days of the contract award. (For questions or a copy of the BWC-337, please call the Worker's Compensation Bureau at 517 -322-1195).
  - C.  I certify my business has a Worker's Compensation Policy. I will provide an original Certificate of Insurance within twenty-one (21) days of the contract award.
3. If you have checked item 2(A) or 2(B), you **must** indicate the number of **both** full-time and part-time employees, other than yourself, including family members and active partners (if none, you must enter "0").

\_\_\_\_\_ Full-time Employees

\_\_\_\_\_ Part-time Employees

Name of Business		Federal ID (or) Social Security No.	
Address		Telephone (       )	
City	State	ZIP	

*I hereby certify that the above information is true and correct. I agree to notify the Michigan DNR of any changes that occur in factors affecting my coverage during any of my present and future operations.*

\_\_\_\_\_  
Signature of Owner or Authorized Representative

\_\_\_\_\_  
Title

\_\_\_\_\_  
Date

**Please complete the "SEALED BID" information on the next page**