

**Supplemental Material for Fisheries Report
49: 2025 Michigan Great Lakes Recreational
Fisheries:
Creel Surveys, Charter Reporting, and
Historical Trends**

This supplemental Excel file provides expanded tables, detailed data, and appendices referenced in the associated journal publication.

Archival information for research purposes.

[LINK TO PUBLICATION PDF](#)

Lake Superior

Port Sampling History Lake Superior

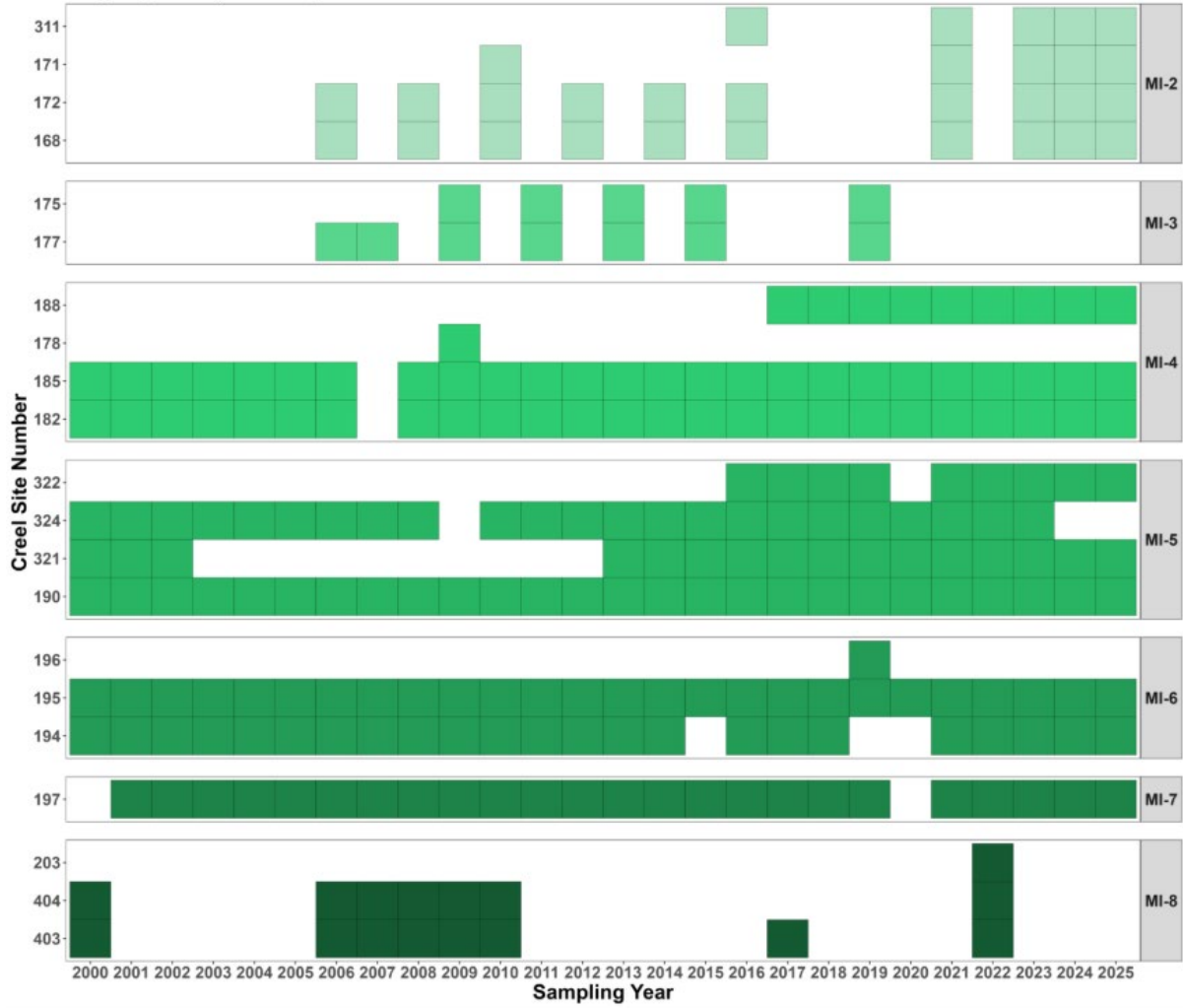
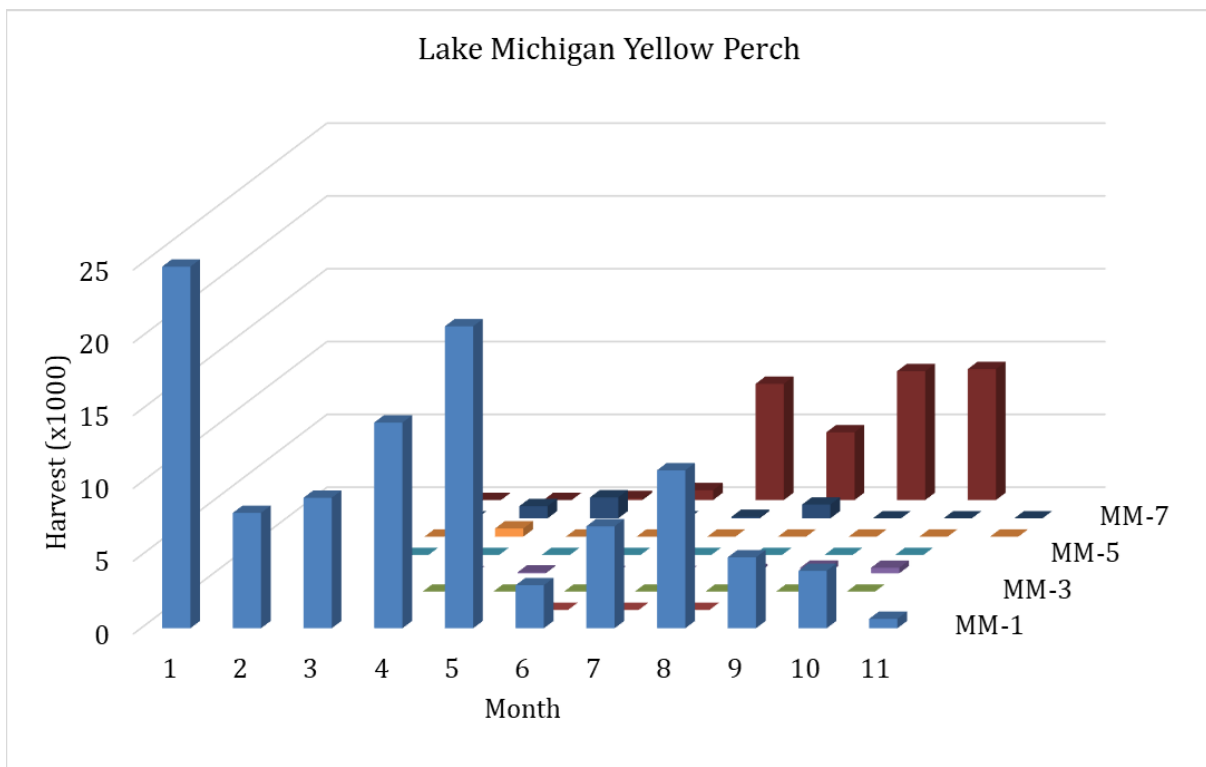
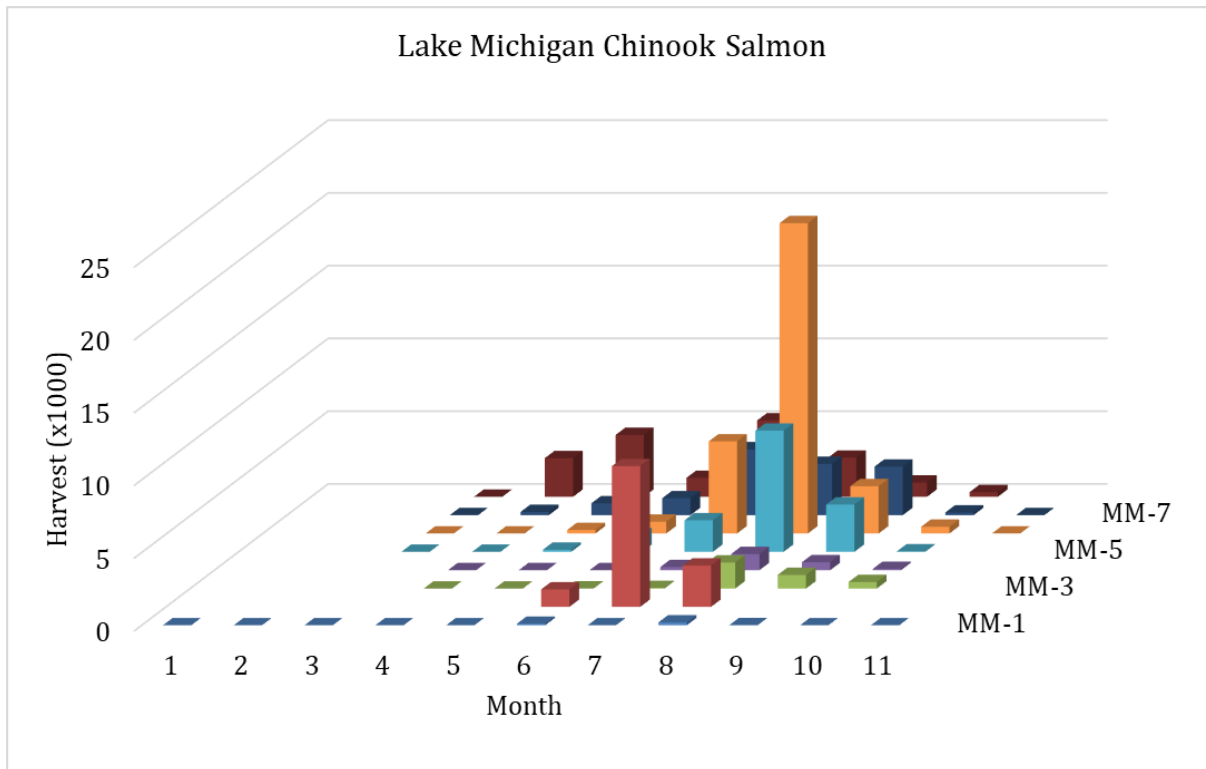


Figure S2. Lake Michigan 2025 harvest by species, month and Great Lake management unit.



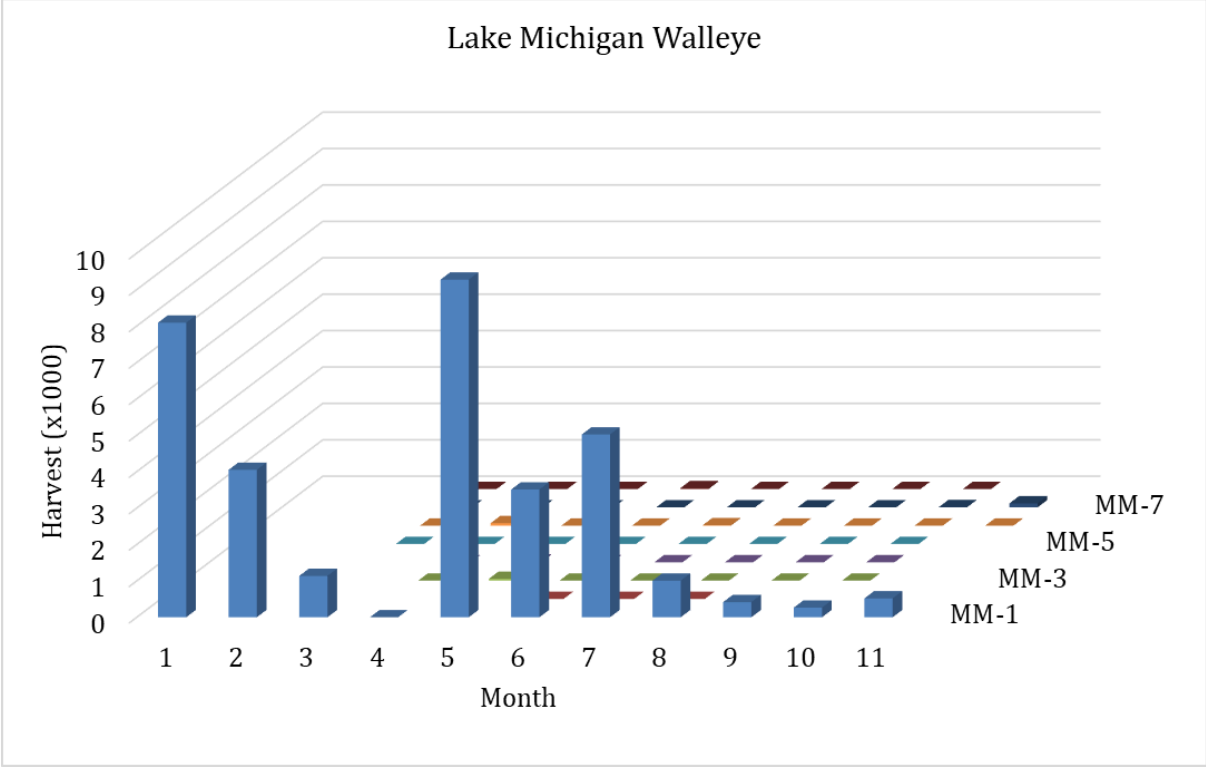
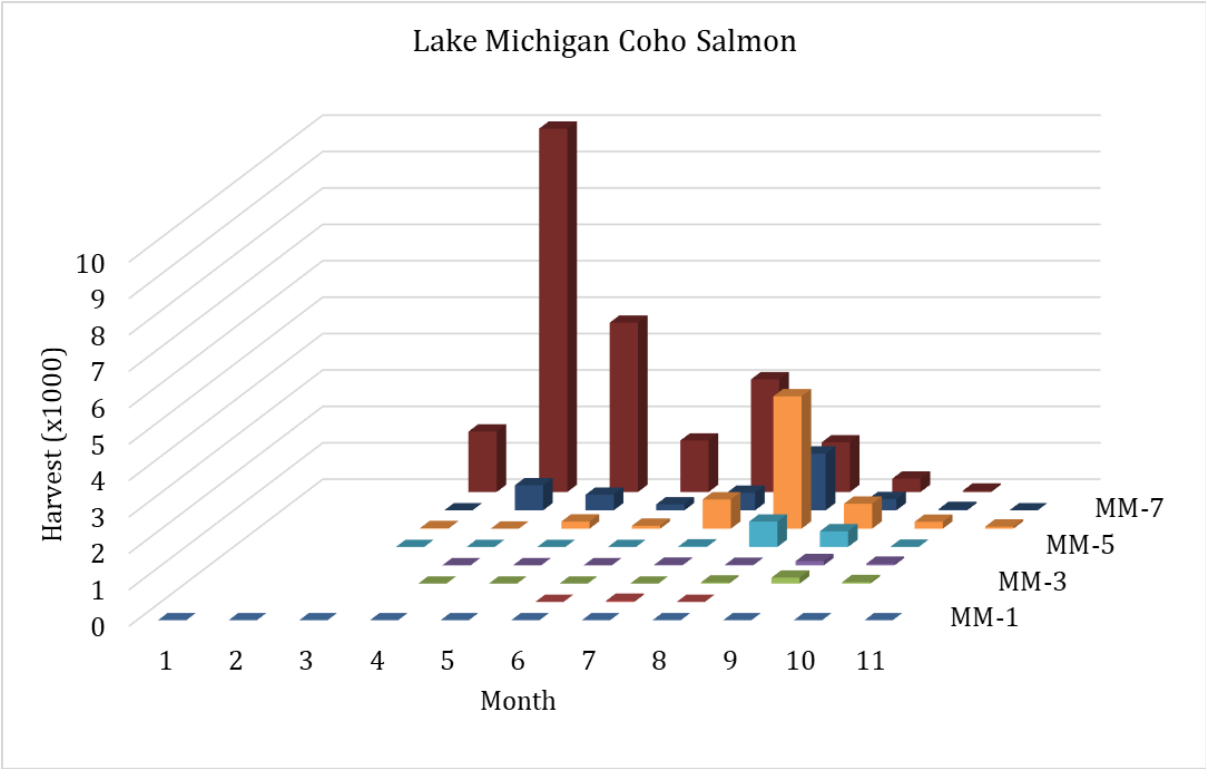


Figure S3. Lake Michigan 2025 release estimates (number of fish). OTH = combined harvest of all other species not shown individually. Species abbreviations can be found in Table A2.

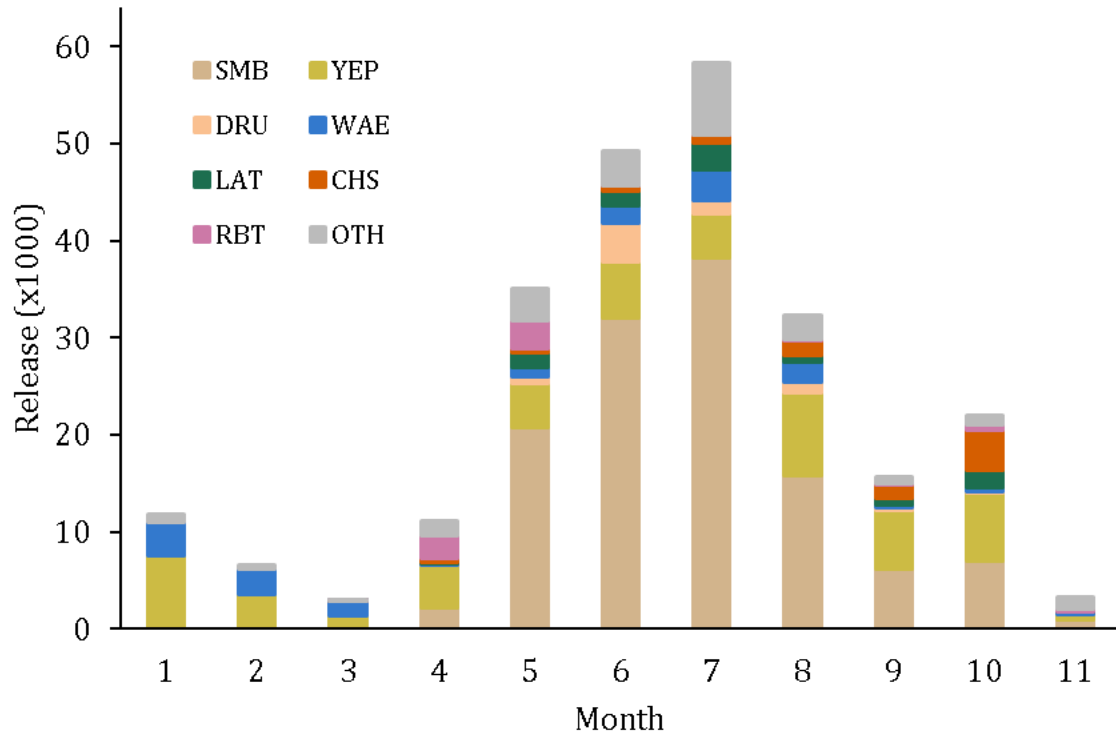


Figure S4. Lake Superior 2025 release estimates (number of fish). OTH = combined harvest of all other species not shown individually. Species abbreviations can be found in Table A2.

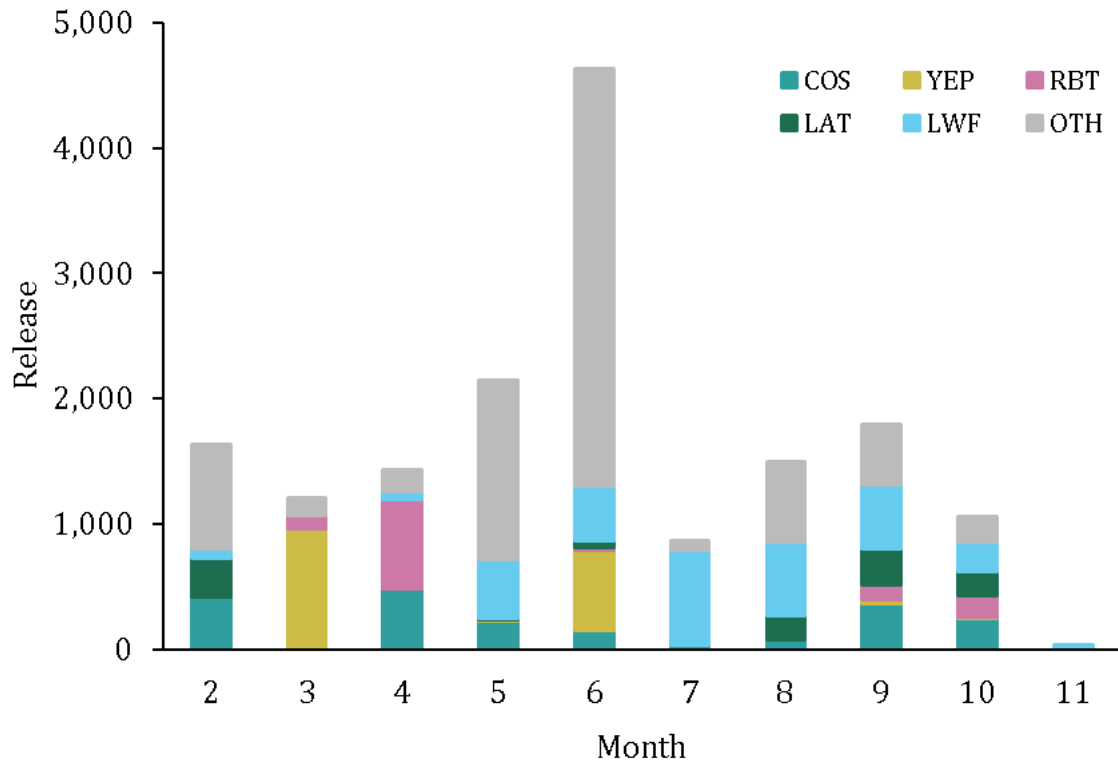


Figure S6. Lake Erie creel survey map showing creel sites. The Northern area is defined as the region containing sites 702 and 703, and the Southern area is defined as the region containing sites 701, 801, and 802.

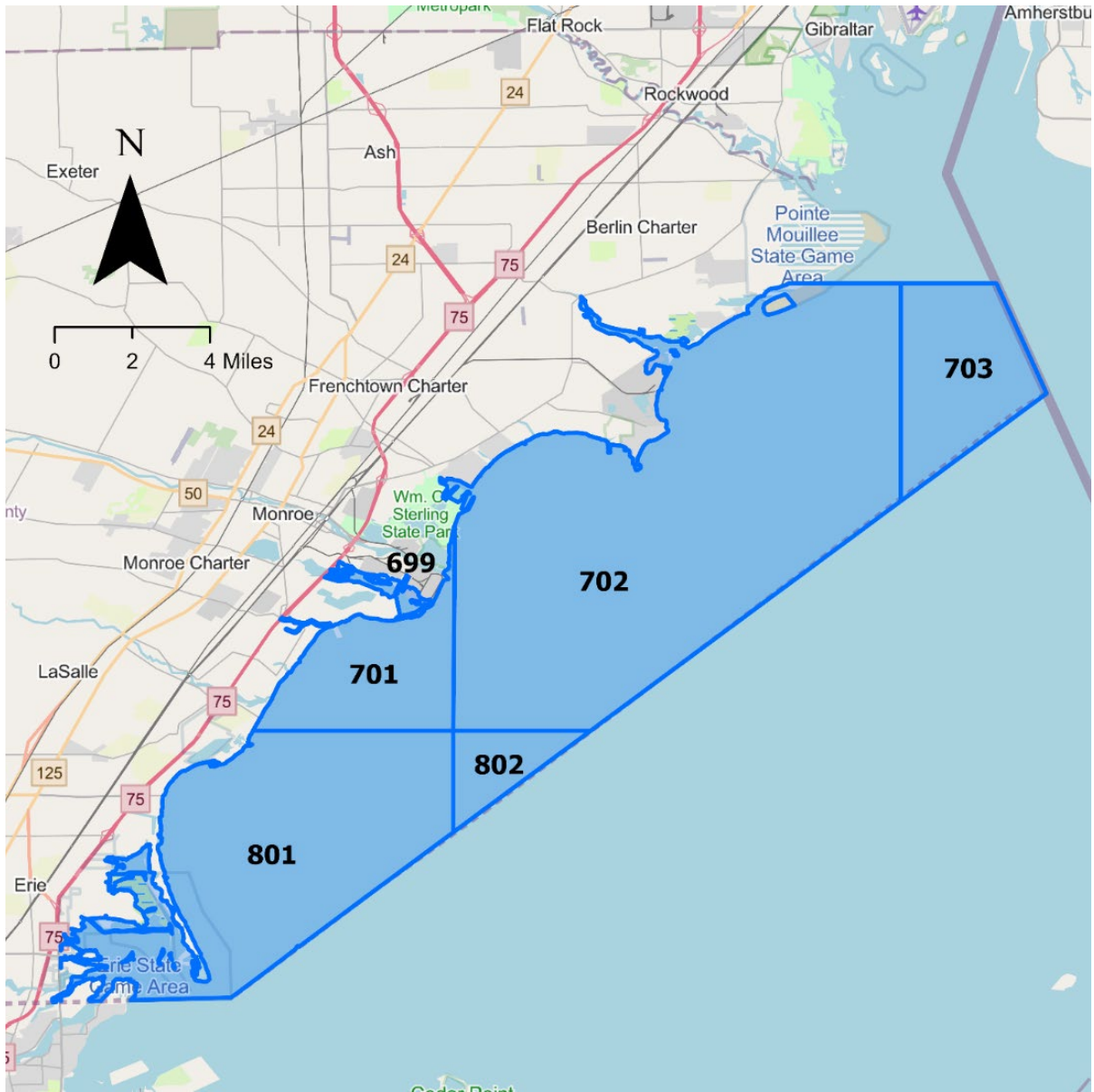


Figure S7. Lake Erie 2025 release estimates (number of fish). OTH = combined harvest of all other species not shown individually. Species abbreviations can be found in Table A2.

