



# TIMBER SALE MAP

This information provided by authority of Part 525, 1994 PA 451, as amended.

Forest Management Unit Atlanta Management Unit		County Montmorency	Mapped By Coy	Date 04/19/2021	Page 2	of 2
Township 30N	Range 02E	Section(s) and Subdivision(s) 28-SWSE 31-N1/2SE		Scale 1:7,920		
<b>Cover Type</b>				<b>Density</b>		
A = Aspen	H = Hemlock	N = Marsh	U = Upland Brush	0 = Non Stocked	5 = Pole Timber Medium	
B = Paper Birch	J = Jack Pine	O = Oak	UM = Upland Mixed	1 = Seedling Sapling Poor	6 = Pole Timber Well	
C = Cedar	L = Lowland Brush	P = Lowland Poplar	V = Bog or Marsh	2 = Seedling Sapling Medium	7 = Saw Timber Poor	
D = Treed Bog	LM = Lowland Mixed	Q = Mixed Swamp Conifer	W = White Pine	3 = Seedling Sapling Well	8 = Saw Timber Medium	
E = Swamp Hdwoods	M = Mpl, Bch, Brch	R = Red Pine	X = Non Stocked	4 = Pole Timber Poor	9 = Saw Timber Well	
F = Spruce Fir	MC = Mixed Conifer	S = Black Spruce	Z = Water			
G = Grass	MD = Mixed Deciduous	T = Tamarack				

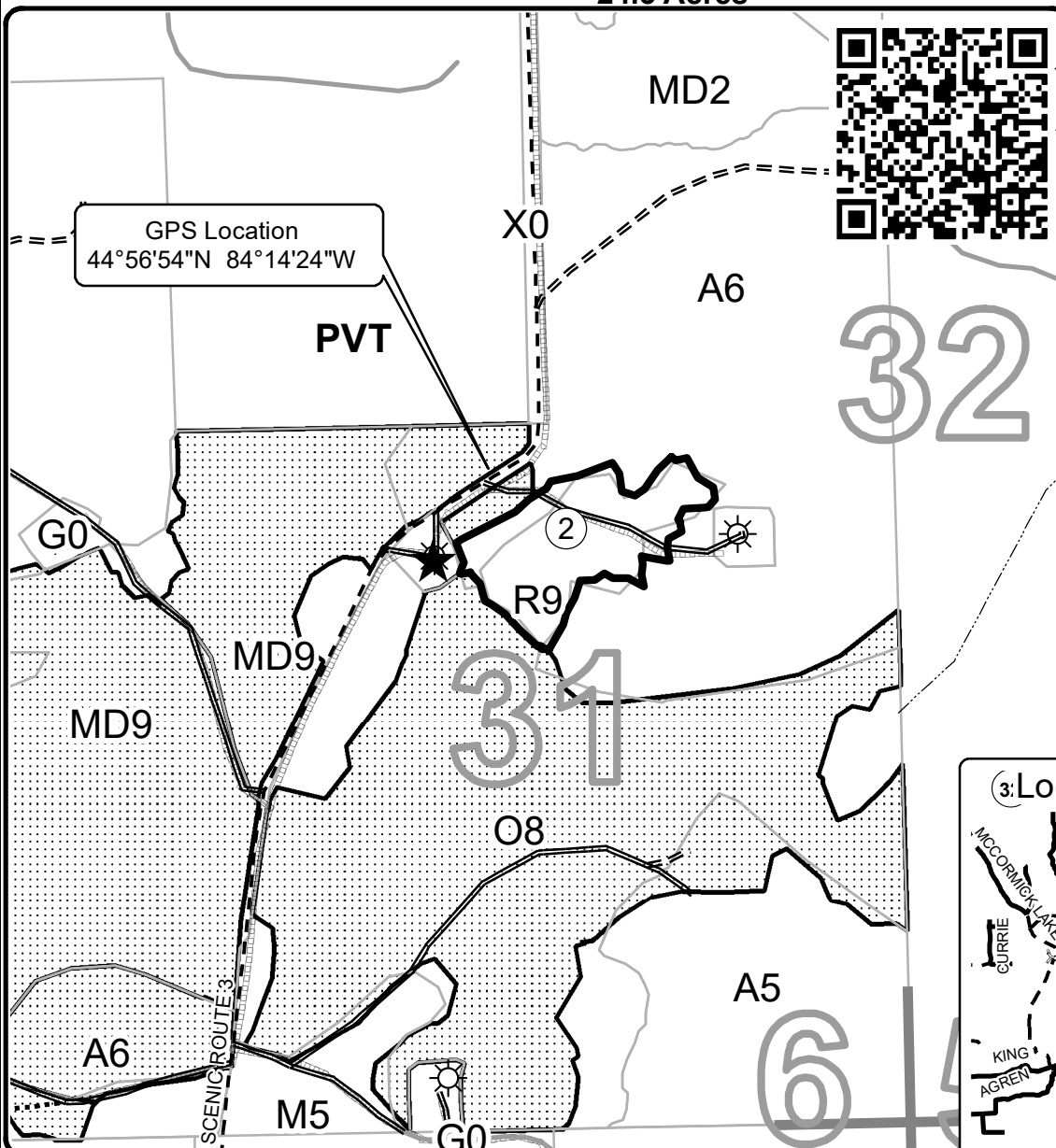
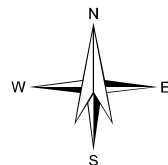
### PU Acres

1	17.0
2	7.3

## 489 and Scenic Route 3 RP

Compartment 23

24.3 Acres



### Legend

- Against State (Red)
- Stand Boundaries
- Nearby Timber Sales
- Landing
- Payment Unit
- Gas Well
- Section Corner
- Secondary Forest Road
- Forest Access Route
- Gravel Road
- Private Road
- Temporary Access
- Pipeline
- Perennial River

### 3: Locator Map<sub>ET</sub> 1:150,000'

