



# TIMBER SALE MAP

This information provided by authority of Part 525, 1994 PA 451, as amended.

Forest Management Unit  
Atlanta Management Unit

County  
Montmorency

Mapped By  
Natzke

Date  
06/05/2021

Page of  
1 1

Township  
29N

Range  
03E

Section(s) and Subdivision(s)  
Sec. 19 SESE; 20 NWSW, S2SW, E2SE; 21 W2SW; 29 SWNW, SWSW; 31 NENE; 32 NWNW

Scale  
1:15,840

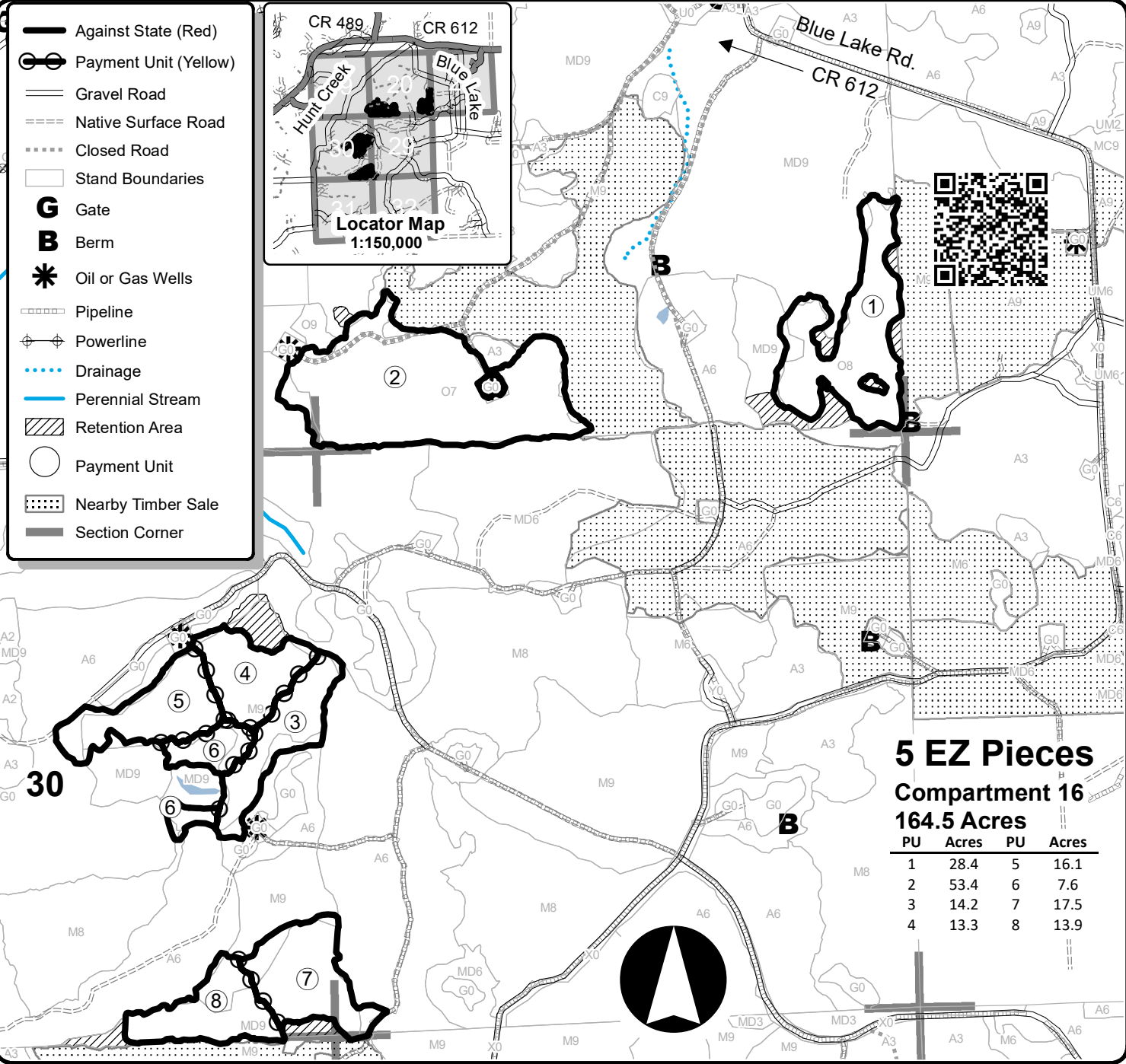
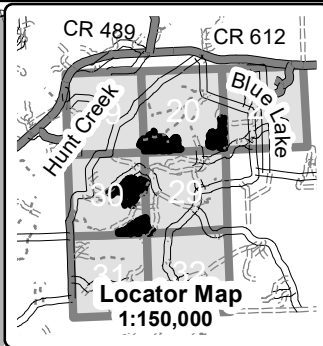
### Cover Type

- A = Aspen
- B = Paper Birch
- C = Cedar
- D = Treed Bog
- E = Swamp Hdwoods
- F = Spruce Fir
- G = Grass
- H = Hemlock
- J = Jack Pine
- L = Lowland Brush
- LM = Lowland Mixed
- M = Mpl, Bch, Brch
- MC = Mixed Conifer
- MD = Mixed Deciduous
- N = Marsh
- O = Oak
- P = Lowland Poplar
- Q = Mixed Swamp Conifer
- R = Red Pine
- S = Black Spruce
- T = Tamarack
- U = Upland Brush
- UM = Upland Mixed
- V = Bog or Marsh
- W = White Pine
- X = Non Stocked
- Z = Water

### Density

- 0 = Non Stocked
- 1 = Seedling Sapling Poor
- 2 = Seedling Sapling Medium
- 3 = Seedling Sapling Well
- 4 = Pole Timber Poor
- 5 = Pole Timber Medium
- 6 = Pole Timber Well
- 7 = Saw Timber Poor
- 8 = Saw Timber Medium
- 9 = Saw Timber Well

- Against State (Red)
- Payment Unit (Yellow)
- Gravel Road
- Native Surface Road
- Closed Road
- Stand Boundaries
- G** Gate
- B** Berm
- Oil or Gas Wells
- Pipeline
- Powerline
- Drainage
- Perennial Stream
- Retention Area
- Payment Unit
- Nearby Timber Sale
- Section Corner



**5 EZ Pieces**  
**Compartment 16**  
**164.5 Acres**

PU	Acres	PU	Acres
1	28.4	5	16.1
2	53.4	6	7.6
3	14.2	7	17.5
4	13.3	8	13.9

