



TIMBER SALE MAP

54-012

23

This information provided by authority of Part 525, 1994 PA 451, as amended.

Forest Management Unit

County

Mapped By Natzke

Date

Page

of

Atlanta

Montmorency

Cruised By Natzke

05/05/2023

1

1

Township
31N

Range
01E

Section(s) and Subdivision(s)
Sec 20, various; Sec 21, various; Sec 22, various; Sec 28, various

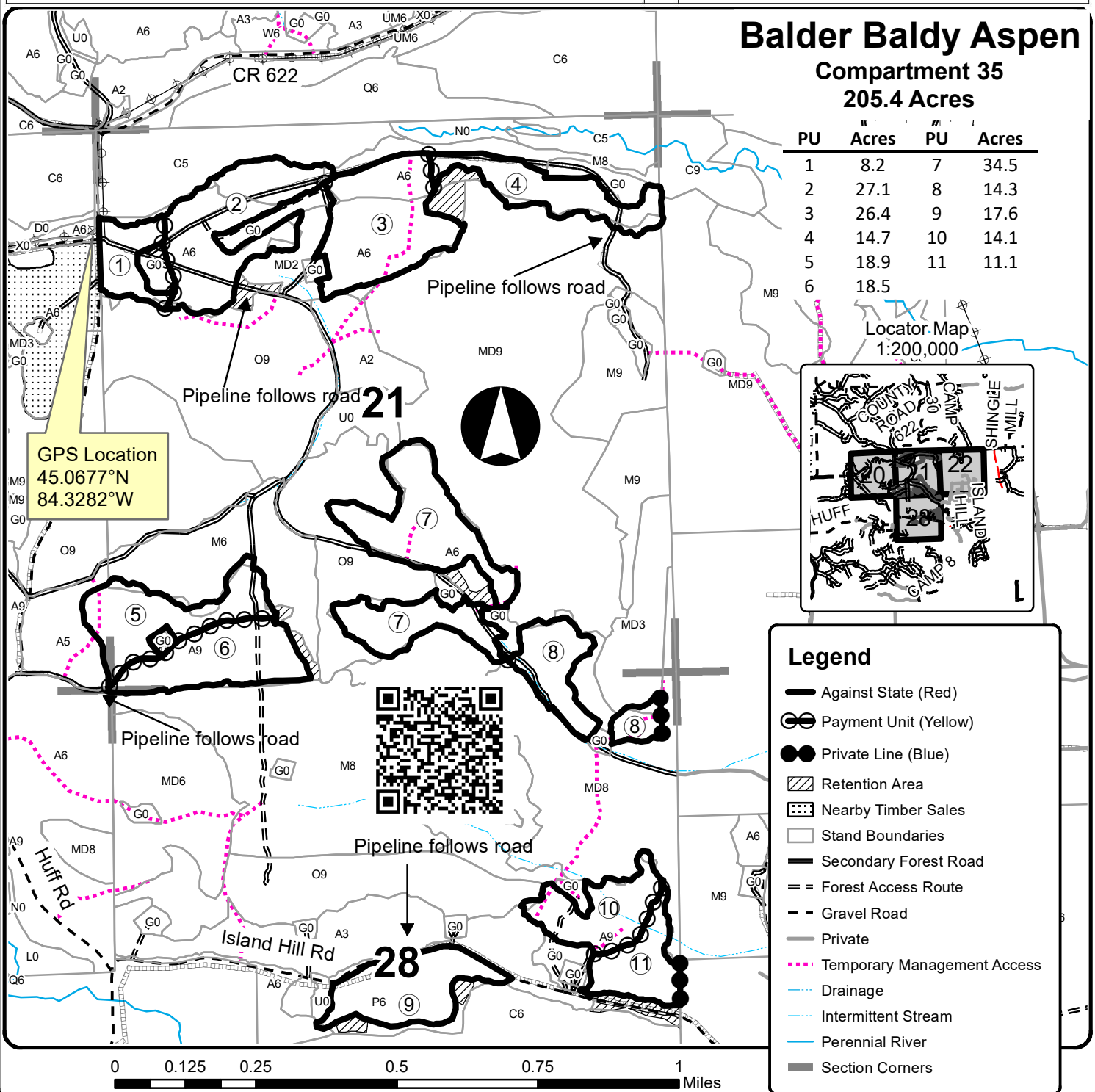
Scale
1:15,840

Cover Type

- A = Aspen
- B = Paper Birch
- C = Cedar
- D = Treed Bog
- E = Swamp Hdwoods
- F = Spruce Fir
- G = Grass
- H = Hemlock
- J = Jack Pine
- L = Lowland Brush
- LM = Lowland Mixed
- M = Mpl, Bch, Brch
- MC = Mixed Conifer
- MD = Mixed Deciduous
- N = Marsh
- O = Oak
- P = Lowland Poplar
- Q = Mixed Swamp Conifer
- R = Red Pine
- S = Black Spruce
- T = Tamarack
- U = Upland Brush
- UM = Upland Mixed
- V = Bog or Marsh
- W = White Pine
- X = Non Stocked
- Z = Water

Density

- 0 = Non Stocked
- 1 = Seedling Sapling Poor
- 2 = Seedling Sapling Medium
- 3 = Seedling Sapling Well
- 4 = Pole Timber Poor
- 5 = Pole Timber Medium
- 6 = Pole Timber Well
- 7 = Saw Timber Poor
- 8 = Saw Timber Medium
- 9 = Saw Timber Well



Balder Baldy Aspen

Compartment 35

205.4 Acres

PU	Acres	PU	Acres
1	8.2	7	34.5
2	27.1	8	14.3
3	26.4	9	17.6
4	14.7	10	14.1
5	18.9	11	11.1
6	18.5		

Locator Map
1:200,000



GPS Location
45.0677°N
84.3282°W



Legend

- Against State (Red)
- Payment Unit (Yellow)
- Private Line (Blue)
- Retention Area
- Nearby Timber Sales
- Stand Boundaries
- Secondary Forest Road
- Forest Access Route
- Gravel Road
- Private
- Temporary Management Access
- Drainage
- Intermittent Stream
- Perennial River
- Section Corners

0 0.125 0.25 0.5 0.75 1 Miles