



# TIMBER SALE MAP

This information provided by authority of Part 525, 1994 PA 451, as amended.

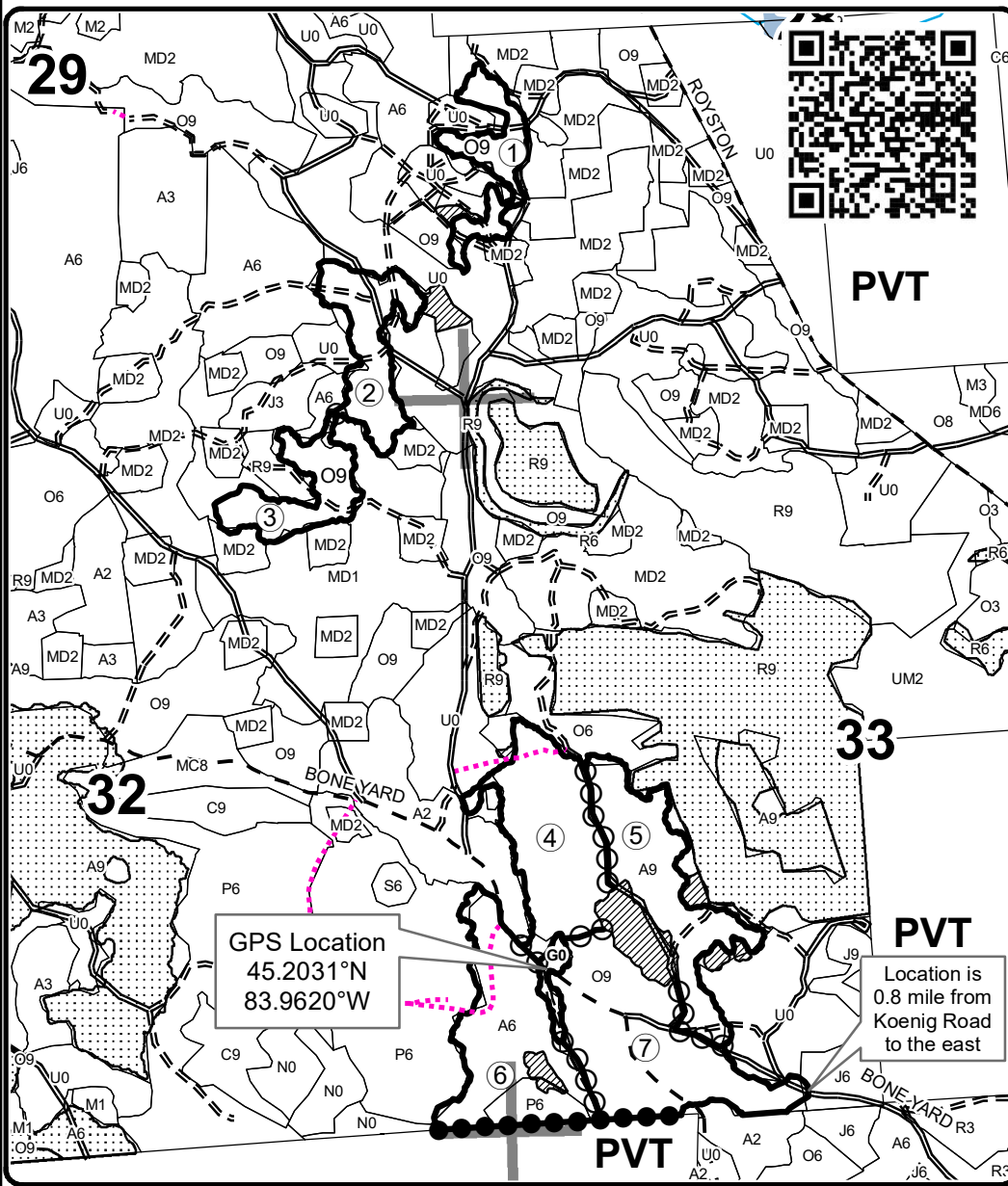
Forest Management Unit <b>Atlanta</b>		County <b>Presque Isle</b>	Mapped By <b>D. Parris</b>	Date <b>09/27/2022</b>	Page <b>1</b>	of <b>1</b>
Township <b>33N</b>	Range <b>04E</b>	Section(s) and Subdivision(s) Sec 28 W1/2SW; Sec 29 E1/2SE, Sec 32 N1/2NE, E1/2SE; Sec 33 SWNW, SW		Scale <b>1:15,840</b>		
Cover Type				Density		
A = Aspen	H = Hemlock	N = Marsh	U = Upland Brush	0 = Non Stocked	5 = Pole Timber Medium	
B = Paper Birch	J = Jack Pine	O = Oak	UM = Upland Mixed	1 = Seedling Sapling Poor	6 = Pole Timber Well	
C = Cedar	L = Lowland Brush	P = Lowland Poplar	V = Bog or Marsh	2 = Seedling Sapling Medium	7 = Saw Timber Poor	
D = Treed Bog	LM = Lowland Mixed	Q = Mixed Swamp Conifer	W = White Pine	3 = Seedling Sapling Well	8 = Saw Timber Medium	
E = Swamp Hdwoods	M = Mpl, Bch, Brch	R = Red Pine	X = Non Stocked	4 = Pole Timber Poor	9 = Saw Timber Well	
F = Spruce Fir	MC = Mixed Conifer	S = Black Spruce	Z = Water			
G = Grass	MD = Mixed Deciduous	T = Tamarack				

PU	Acres	PU	Acres
1	8.1	5	18.5
2	11.3	6	21.9
3	9.3	7	27.0
4	20.5		

## C128 South and Central

### Compartment 128

116.6 Acres



### Legend

- Against State (Red)
- Payment Unit (Yellow)
- Private Line (Blue)
- Retention Area (Red)
- Nearby Timber Sales
- Payment Unit
- Stand Boundaries
- DNR - Secondary Forest Road
- DNR - Forest Access Route
- County - Gravel Road
- Temporary Management Access
- Lakes and Rivers
- Section Corners

### Locator Map

1:200,000

