



TIMBER SALE MAP

This information provided by authority of Part 525, 1994 PA 451, as amended.

Forest Management Unit Atlanta Management Unit		County Montmorency	Mapped By Coy	Date 7/10/2020	Page 1	of 1
Township 32N	Range 03E	Section(s) and Subdivision(s) 24- S2NW, NESW, & NWSE		Scale 1:15,840		
Cover Type				Density		
A = Aspen	H = Hemlock	N = Marsh	U = Upland Brush	0 = Non Stocked	5 = Pole Timber Medium	
B = Paper Birch	J = Jack Pine	O = Oak	UM = Upland Mixed	1 = Seedling Sapling Poor	6 = Pole Timber Well	
C = Cedar	L = Lowland Brush	P = Lowland Poplar	V = Bog or Marsh	2 = Seedling Sapling Medium	7 = Saw Timber Poor	
D = Treed Bog	LM = Lowland Mixed	Q = Mixed Swamp Conifer	W = White Pine	3 = Seedling Sapling Well	8 = Saw Timber Medium	
E = Swamp Hdwoods	M = Mpl, Bch, Brch	R = Red Pine	X = Non Stocked	4 = Pole Timber Poor	9 = Saw Timber Well	
F = Spruce Fir	MC = Mixed Conifer	S = Black Spruce	Z = Water			
G = Grass	MD = Mixed Deciduous	T = Tamarack				

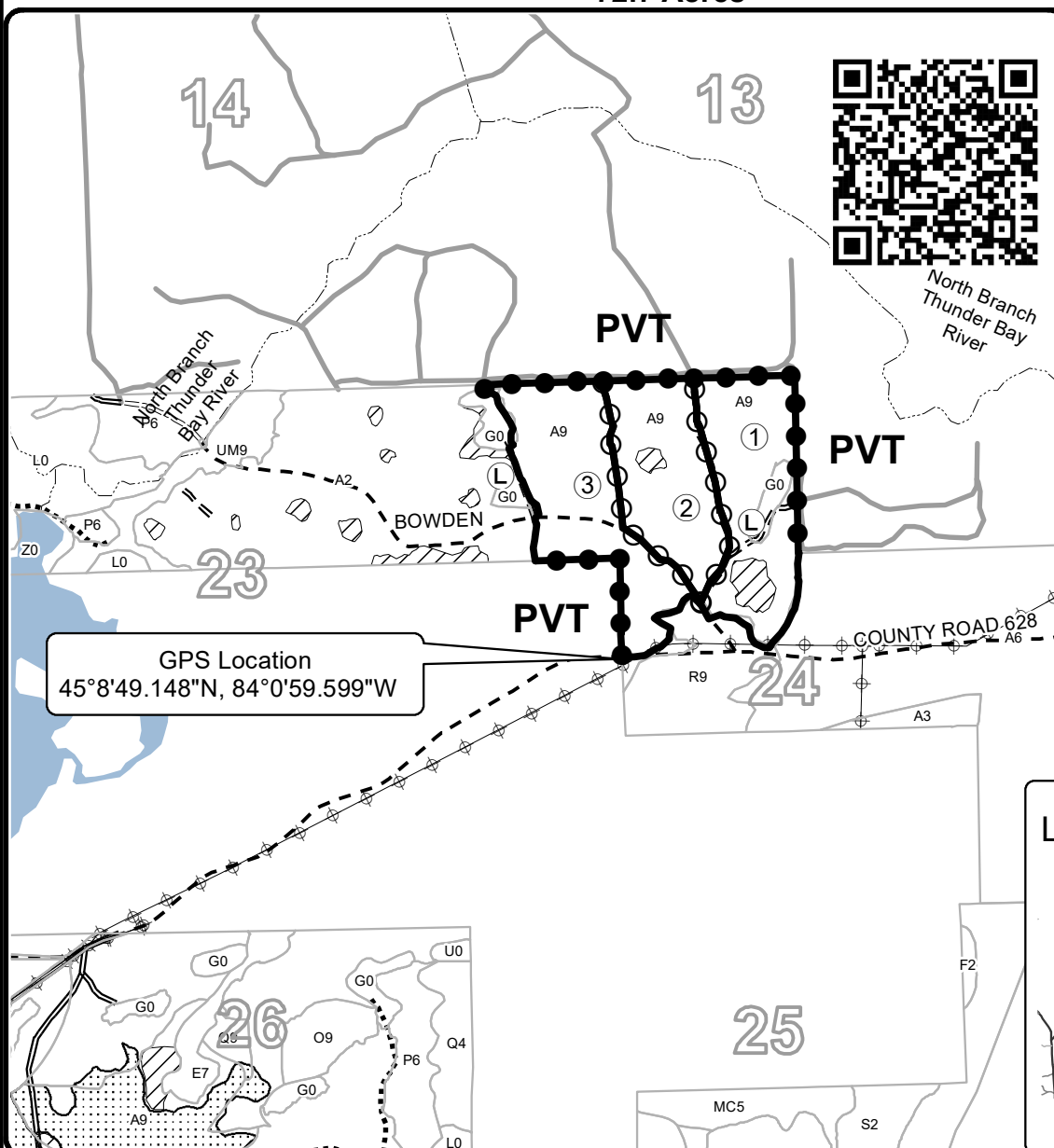
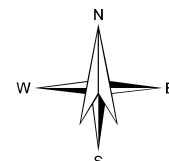
PU Acres

1	22.8
2	21.3
3	28.6

CR 628 and Boden Aspen

Compartment 67

72.7 Acres



Legend

- Against State (Red)
- Private Line (Blue)
- Payment Unit (Yellow)
- Retention Area (Red)
- Nearby Timber Sales
- Stand Boundaries
- Lakes
- Payment Unit
- Landing
- Secondary Forest Road
- Forest Access Route
- Gravel Road
- County Road - Seasonal
- Private Road
- Temporary Access
- Powerline
- Perennial River

