



TIMBER SALE MAP

This information provided by authority of Part 525, 1994 PA 451, as amended.

Forest Management Unit Atlanta		County Presque Isle	Mapped By Ryan Zimmerman	Date 10/2/2020	Page 2	of 2
Township 36N	Range 02E	Section(s) and Subdivision(s) Sec 25: NW, NWSW, S1/2SW, SWSE Sec 35: SENE, SE Sec 36: NENW, SWNW, NWNE, W1/2SW		Scale 1:15,840		

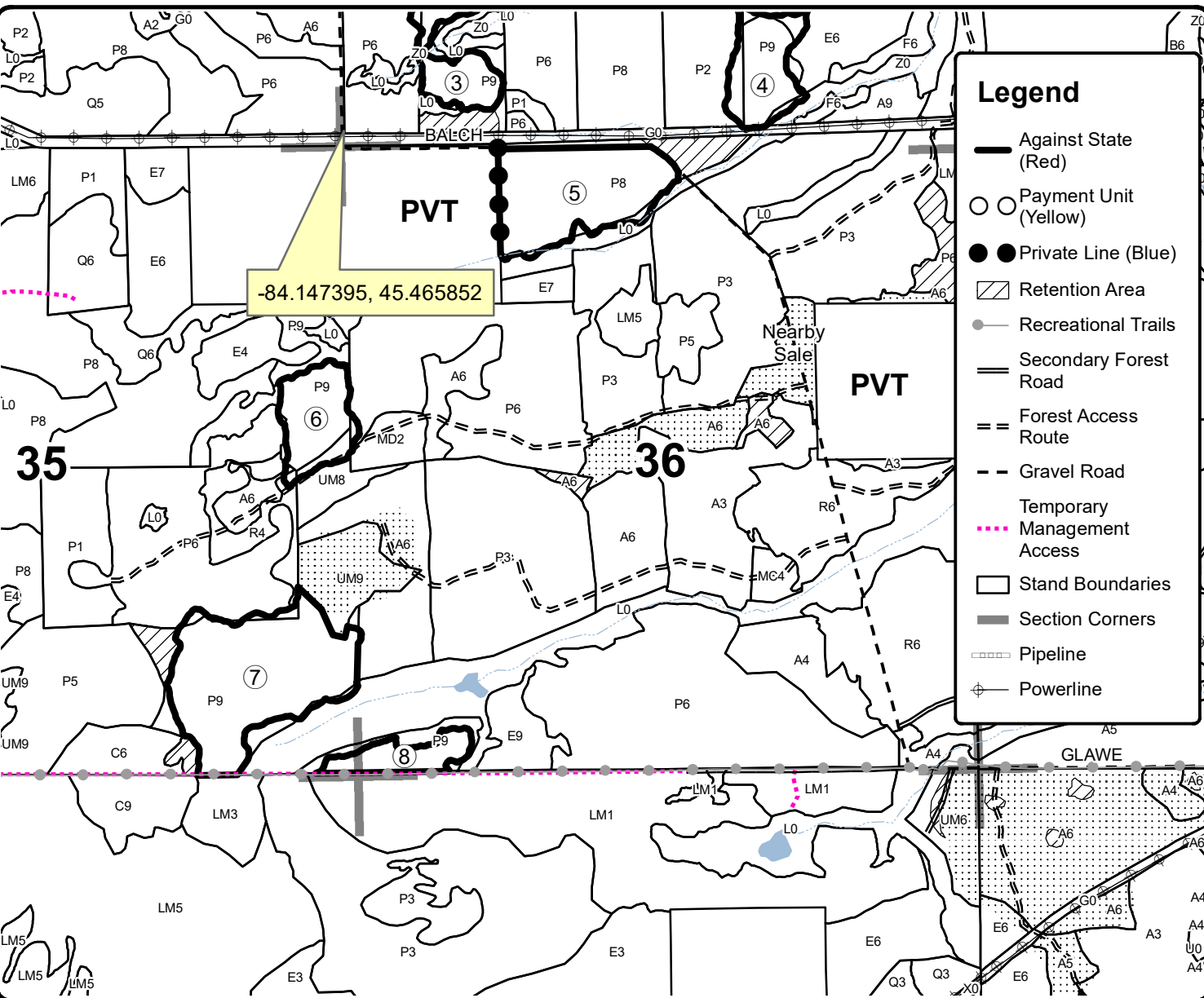
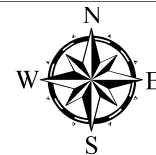
Cover Type				Density	
A = Aspen	H = Hemlock	N = Marsh	U = Upland Brush	0 = Non Stocked	5 = Pole Timber Medium
B = Paper Birch	J = Jack Pine	O = Oak	UM = Upland Mixed	1 = Seedling Sapling Poor	6 = Pole Timber Well
C = Cedar	L = Lowland Brush	P = Lowland Poplar	V = Bog or Marsh	2 = Seedling Sapling Medium	7 = Saw Timber Poor
D = Treed Bog	LM = Lowland Mixed	Q = Mixed Swamp Conifer	W = White Pine	3 = Seedling Sapling Well	8 = Saw Timber Medium
E = Swamp Hdwoods	M = Mpl, Bch, Brch	R = Red Pine	X = Non Stocked	4 = Pole Timber Poor	9 = Saw Timber Well
F = Spruce Fir	MC = Mixed Conifer	S = Black Spruce	Z = Water		
G = Grass	MD = Mixed Deciduous	T = Tamarack			

PU	Acres	PU	Acres
1	42.3	6	11.3
2	26.6	7	34.4
3	21.5	8	6.1
4	23.8		
5	11.3		

Calf Eater Aspen

Compartment 160

177.3 Acres



Legend

- Against State (Red)
- Payment Unit (Yellow)
- Private Line (Blue)
- ▨ Retention Area
- Recreational Trails
- == Secondary Forest Road
- == Forest Access Route
- - Gravel Road
- Temporary Management Access
- Stand Boundaries
- Section Corners
- Pipeline
- ⊕ Powerline

