



TIMBER SALE MAP

This information provided by authority of Part 525, 1994 PA 451, as amended.

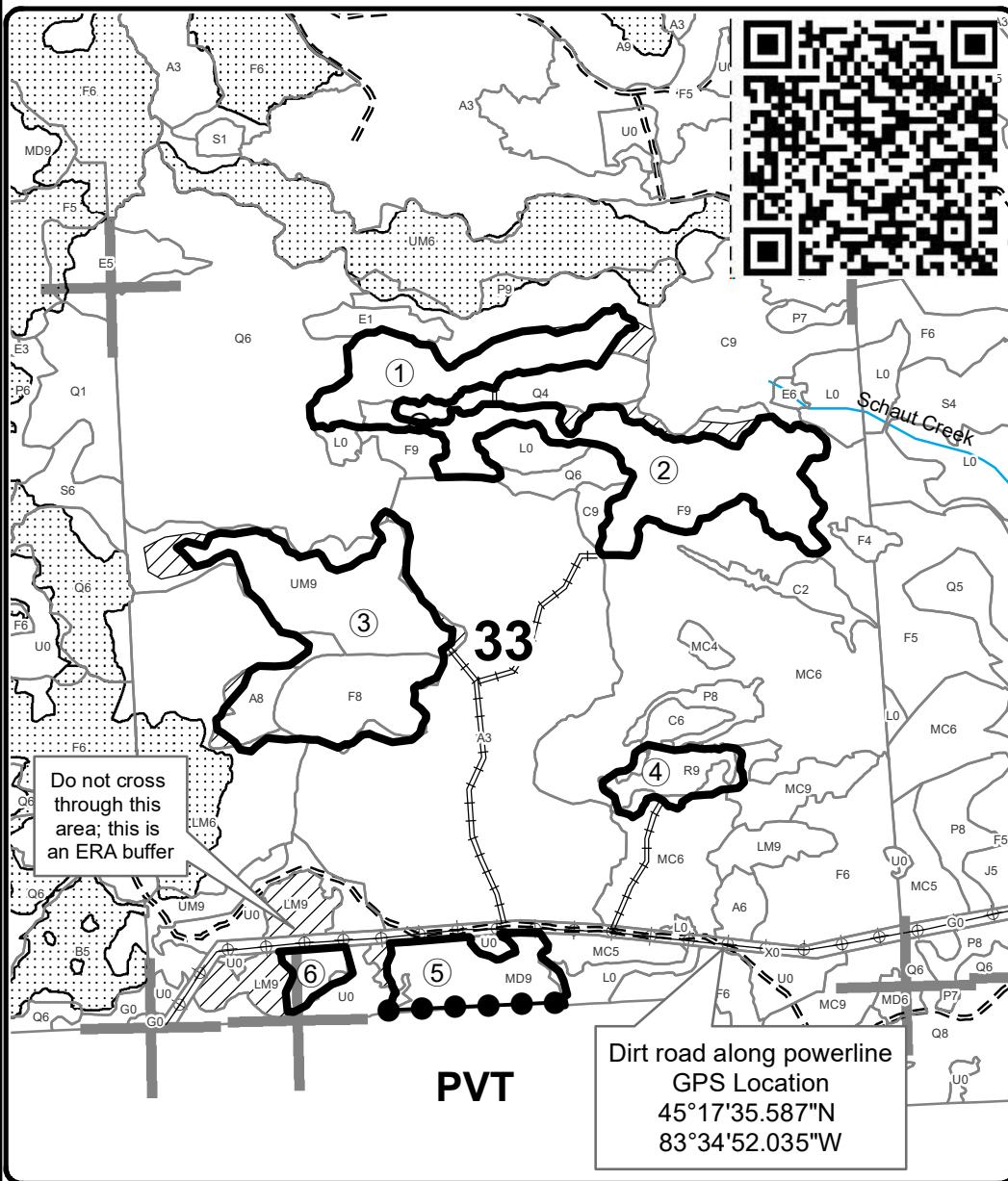
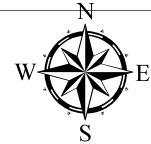
Forest Management Unit Atlanta		County Presque Isle	Mapped By Mittig	Date 09/23/2019	Page 1	of 1
Township 34N	Range 07E	Section(s) and Subdivision(s) Sec 33; NENW,S1/2NW,NE,SW,N1/2SE,SWSE		Scale 1:15,840		
Cover Type				Density		
A = Aspen	H = Hemlock	N = Marsh	U = Upland Brush	0 = Non Stocked	5 = Pole Timber Medium	
B = Paper Birch	J = Jack Pine	O = Oak	UM = Upland Mixed	1 = Seedling Sapling Poor	6 = Pole Timber Well	
C = Cedar	L = Lowland Brush	P = Lowland Poplar	V = Bog or Marsh	2 = Seedling Sapling Medium	7 = Saw Timber Poor	
D = Treed Bog	LM = Lowland Mixed	Q = Mixed Swamp Conifer	W = White Pine	3 = Seedling Sapling Well	8 = Saw Timber Medium	
E = Swamp Hdwoods	M = Mpl, Bch, Brch	R = Red Pine	X = Non Stocked	4 = Pole Timber Poor	9 = Saw Timber Well	
F = Spruce Fir	MC = Mixed Conifer	S = Black Spruce	Z = Water			
G = Grass	MD = Mixed Deciduous	T = Tamarack				

PU	Acres	PU	Acres
1	18.5	4	7.4
2	30.6	5	12.6
3	41.1	6	3.4

Dagger Rock Lowlands

Compartment 141

114.3 Acres



Legend

- Against State (Red)
- Payment Unit (Yellow)
- Private Line (Blue)
- Stand Boundaries
- Payment Unit
- ▨ Retention Area
- ▤ Nearby Timber Sales
- ⚡ Powerline
- == Forest Access Route
- ≡ Flagged Road
- Section Corners
- Perennial River

Locator Map

1:150,000

