



TIMBER SALE MAP

This information provided by authority of Part 525, 1994 PA 451, as amended.

Forest Management Unit Atlanta		County Alpena	Mapped By D. Parris	Date 9/30/22	Page 1	of 2
Township 32N	Range 06E	Section(s) and Subdivision(s) Sec 24 NWSW,S1/2SW; Sec 25 NENW,NWNE,NWSW		Scale 1:7,920		

Cover Type

A = Aspen	H = Hemlock	N = Marsh	U = Upland Brush
B = Paper Birch	J = Jack Pine	O = Oak	UM = Upland Mixed
C = Cedar	L = Lowland Brush	P = Lowland Poplar	V = Bog or Marsh
D = Treed Bog	LM = Lowland Mixed	Q = Mixed Swamp Conifer	W = White Pine
E = Swamp Hdwoods	M = Mpl, Bch, Brch	R = Red Pine	X = Non Stocked
F = Spruce Fir	MC = Mixed Conifer	S = Black Spruce	Z = Water
G = Grass	MD = Mixed Deciduous	T = Tamarack	

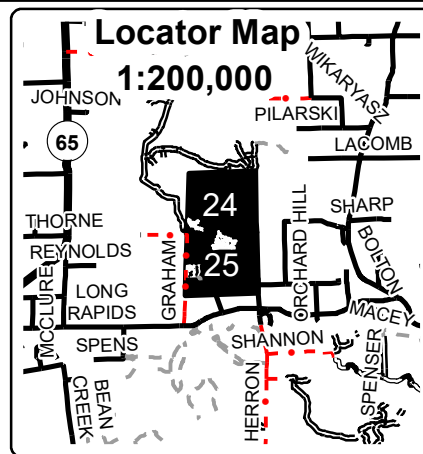
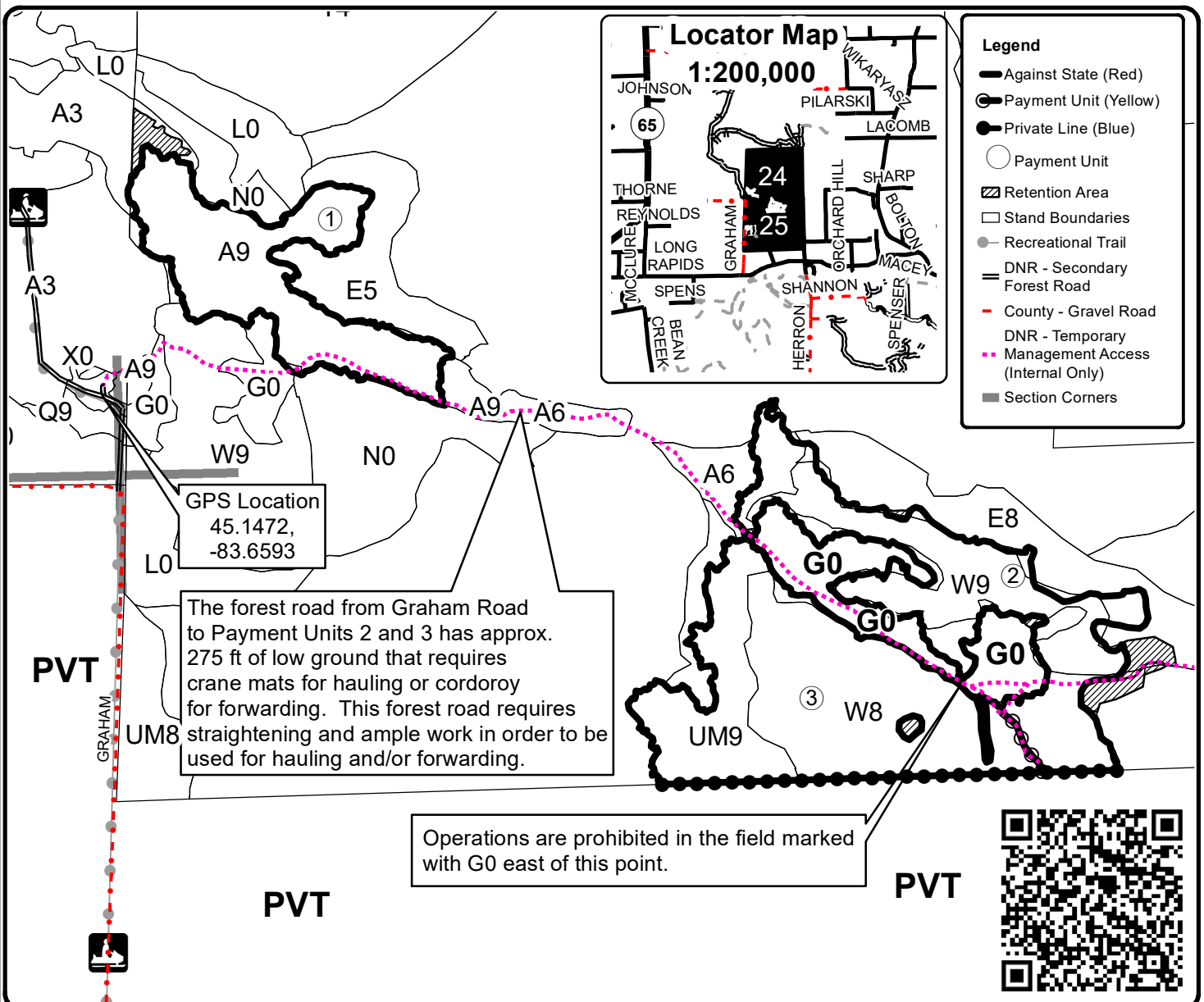
Density

0 = Non Stocked	5 = Pole Timber Medium
1 = Seedling Sapling Poor	6 = Pole Timber Well
2 = Seedling Sapling Medium	7 = Saw Timber Poor
3 = Seedling Sapling Well	8 = Saw Timber Medium
4 = Pole Timber Poor	9 = Saw Timber Well

PU	Acres
1	12.2
2	15.2
3	21.0
4	18.4

Graham's Knotty Pine and Aspen

Compartment 113
66.8 Acres



Legend

- Against State (Red)
- Payment Unit (Yellow)
- Private Line (Blue)
- Payment Unit
- ▨ Retention Area
- Stand Boundaries
- Recreational Trail
- DNR - Secondary Forest Road
- County - Gravel Road
- DNR - Temporary Management Access (Internal Only)
- Section Corners

