



# TIMBER SALE MAP

This information provided by authority of Part 525, 1994 PA 451, as amended.

Forest Management Unit <b>Atlanta</b>		County <b>Montmorency</b>	Mapped By <b>Natzke</b>	Date <b>09/27/2022</b>	Page <b>1</b>	of <b>1</b>
Township <b>32N</b>	Range <b>04E</b>	Section(s) and Subdivision(s) <b>Sec. 19 SWNE, N2SE, SESE</b>		Scale <b>1:15,840</b>		

### Cover Type

A = Aspen	H = Hemlock	N = Marsh	U = Upland Brush
B = Paper Birch	J = Jack Pine	O = Oak	UM = Upland Mixed
C = Cedar	L = Lowland Brush	P = Lowland Poplar	V = Bog or Marsh
D = Treed Bog	LM = Lowland Mixed	Q = Mixed Swamp Conifer	W = White Pine
E = Swamp Hdwoods	M = Mpl, Bch, Brch	R = Red Pine	X = Non Stocked
F = Spruce Fir	MC = Mixed Conifer	S = Black Spruce	Z = Water
G = Grass	MD = Mixed Deciduous	T = Tamarack	

### Density

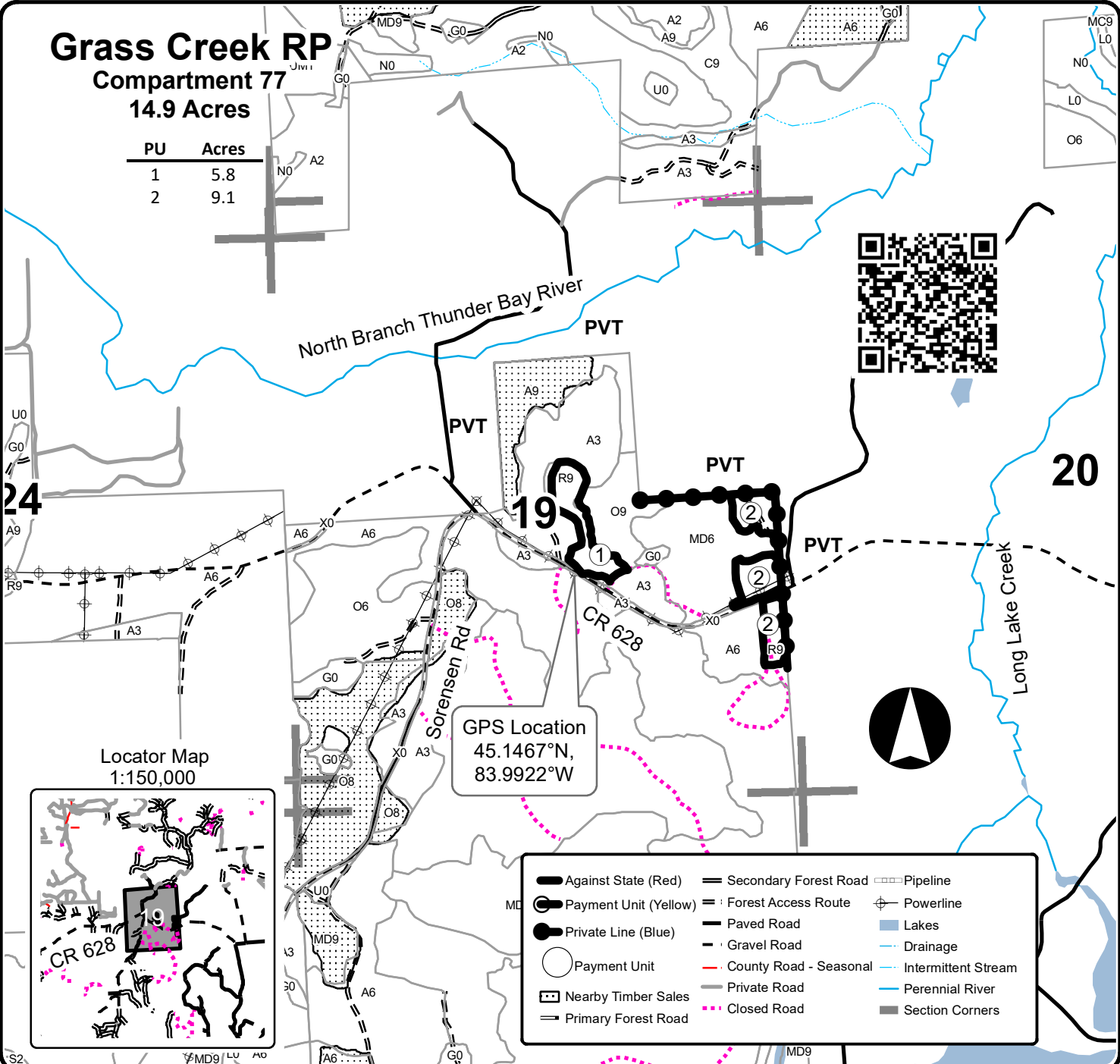
0 = Non Stocked	5 = Pole Timber Medium
1 = Seedling Sapling Poor	6 = Pole Timber Well
2 = Seedling Sapling Medium	7 = Saw Timber Poor
3 = Seedling Sapling Well	8 = Saw Timber Medium
4 = Pole Timber Poor	9 = Saw Timber Well

## Grass Creek RP

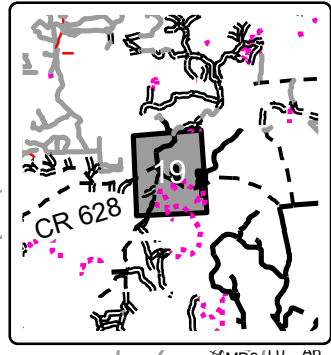
### Compartment 77

14.9 Acres

PU	Acres
1	5.8
2	9.1



Locator Map  
1:150,000



GPS Location  
45.1467°N,  
83.9922°W

Against State (Red)	Secondary Forest Road	Pipeline
Payment Unit (Yellow)	Forest Access Route	Powerline
Private Line (Blue)	Paved Road	Lakes
Payment Unit	Gravel Road	Drainage
Nearby Timber Sales	County Road - Seasonal	Intermittent Stream
Primary Forest Road	Private Road	Perennial River
	Closed Road	Section Corners

