



# TIMBER SALE MAP

This information provided by authority of Part 525, 1994 PA 451, as amended.

Forest Management Unit <b>Atlanta</b>		County <b>Presque Isle</b>	Mapped By <b>Doug Tyran</b>	Date <b>09/28/2021</b>	Page <b>1</b>	of <b>1</b>
Township <b>35N</b>	Range <b>03E</b>	Section(s) and Subdivision(s) <b>35: NESE, S1/2SE 36: SW, SWSE</b>		Scale <b>1:15,840</b>		
Cover Type				Density		
A = Aspen	H = Hemlock	N = Marsh	U = Upland Brush	0 = Non Stocked	5 = Pole Timber Medium	
B = Paper Birch	J = Jack Pine	O = Oak	UM = Upland Mixed	1 = Seedling Sapling Poor	6 = Pole Timber Well	
C = Cedar	L = Lowland Brush	P = Lowland Poplar	V = Bog or Marsh	2 = Seedling Sapling Medium	7 = Saw Timber Poor	
D = Treed Bog	LM = Lowland Mixed	Q = Mixed Swamp Conifer	W = White Pine	3 = Seedling Sapling Well	8 = Saw Timber Medium	
E = Swamp Hdwoods	M = Mpl, Bch, Brch	R = Red Pine	X = Non Stocked	4 = Pole Timber Poor	9 = Saw Timber Well	
F = Spruce Fir	MC = Mixed Conifer	S = Black Spruce	Z = Water			
G = Grass	MD = Mixed Deciduous	T = Tamarack				

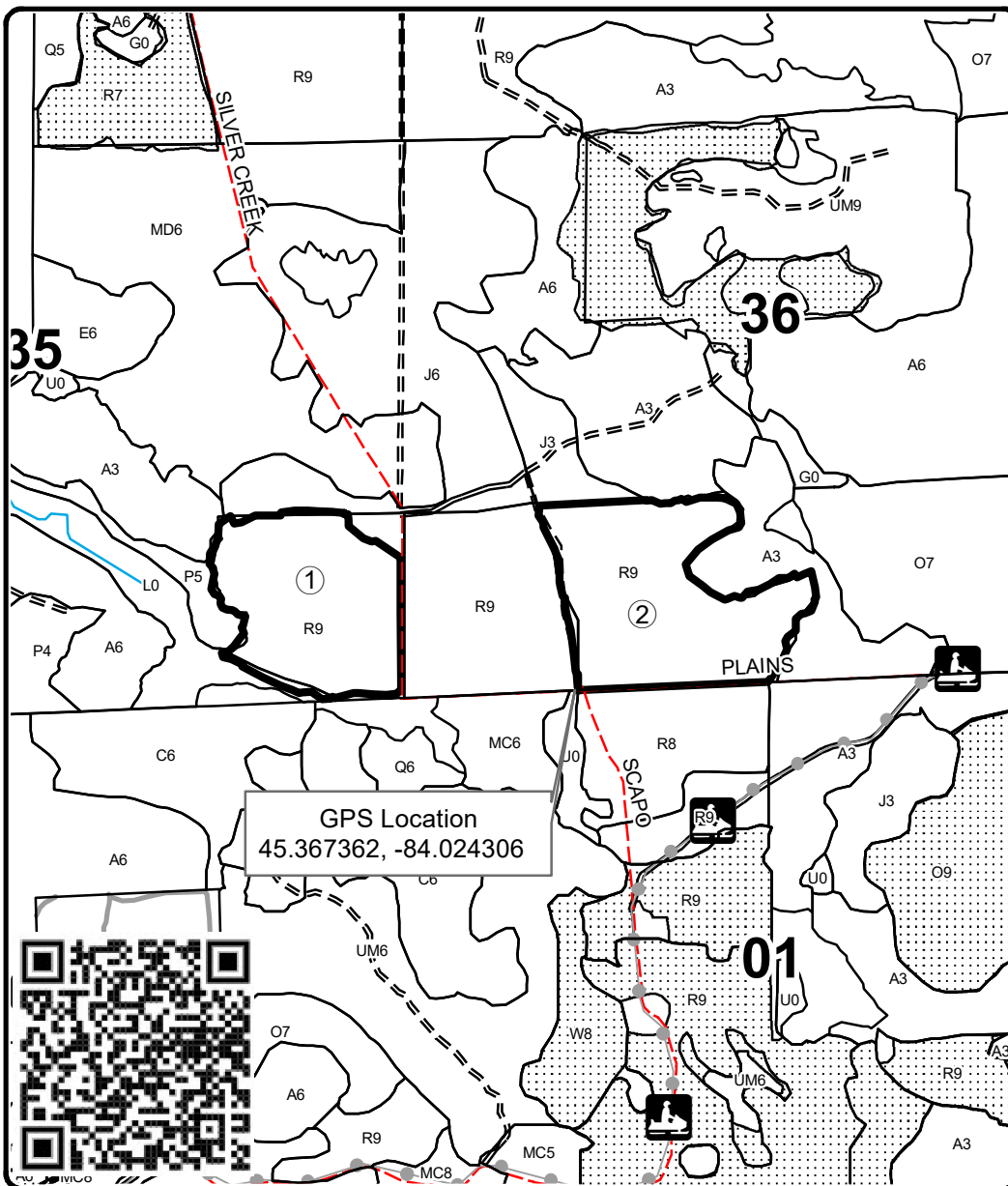
## PU Acres

<b>1</b>	<b>33.8</b>
<b>2</b>	<b>41.6</b>

## Low Intensity Red Pine

### Compartment 151

### 75.4 Acres



## Legend

- Against State (Red)
- Nearby Timber Sales
- Stand Boundaries
- Lakes and Rivers
- Primary Forest Road
- Secondary Forest Road
- Forest Access Route
- Paved Road
- Gravel Road
- County Road - Seasonal
- Private
- Payment Unit Label

## Locator Map

1:200,000

