



# TIMBER SALE MAP

This information provided by authority of Part 525, 1994 PA 451, as amended.

Forest Management Unit

Atlanta

County

Presque Isle

Mapped By Dale Parris

Cruised By D. Parris, D. Natzke, J. Mittig, C. Zaremba

Date

9/30/2019

Page

2

of

2

Township

34N

Range

07E

Section(s) and Subdivision(s) S21 SWNW, NWSW, S1/2SW;  
S27 W1/2NW, NWSW; S28 NW, NE, SW, SE; S33 NENW, N1/2NE

Scale

1:15,840

### Cover Type

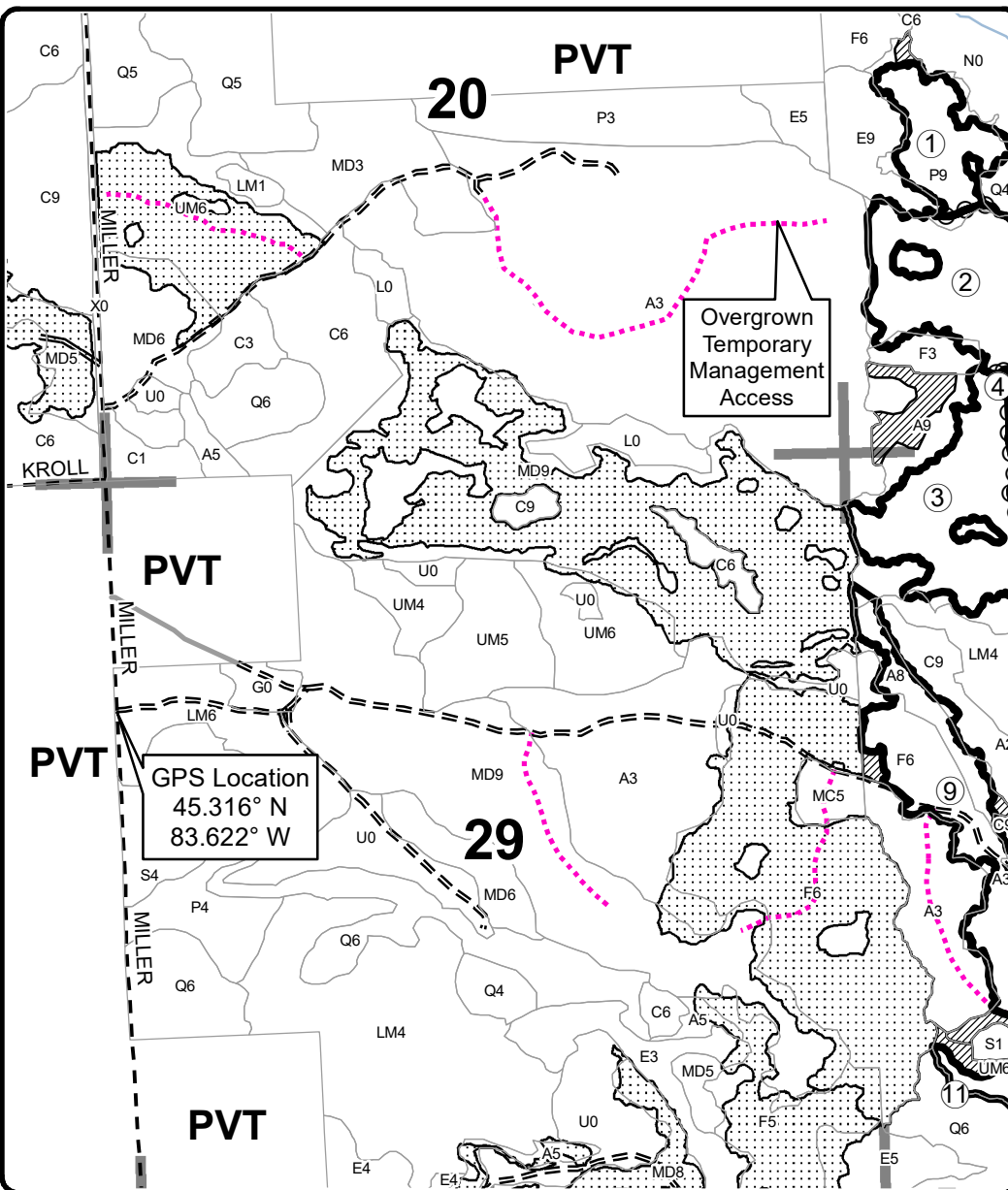
A = Aspen	H = Hemlock	N = Marsh	U = Upland Brush
B = Paper Birch	J = Jack Pine	O = Oak	UM = Upland Mixed
C = Cedar	L = Lowland Brush	P = Lowland Poplar	V = Bog or Marsh
D = Treed Bog	LM = Lowland Mixed	Q = Mixed Swamp Conifer	W = White Pine
E = Swamp Hdwoods	M = Mpl, Bch, Brch	R = Red Pine	X = Non Stocked
F = Spruce Fir	MC = Mixed Conifer	S = Black Spruce	Z = Water
G = Grass	MD = Mixed Deciduous	T = Tamarack	

### Density

0 = Non Stocked	5 = Pole Timber Medium
1 = Seedling Sapling Poor	6 = Pole Timber Well
2 = Seedling Sapling Medium	7 = Saw Timber Poor
3 = Seedling Sapling Well	8 = Saw Timber Medium
4 = Pole Timber Poor	9 = Saw Timber Well

PU	Acres	PU	Acres	PU	Acres
1	11.9	5	26.4	9	33.1
2	22.7	6	24.9	10	17.5
3	24.7	7	23.4	11	24.6
4	23.7	8	27.2	12	19.1

**Miller's Grand  
Lost Acres Mix  
Compartment 141  
279.2 Acres**



### Legend

- Against State (Red)
- Payment Unit (Yellow)
- Retention Area
- Stand Boundaries
- Nearby Timber Sales
- Payment Unit
- Secondary Forest Road
- Forest Access Route
- Gravel Road
- Private Road
- Temporary Management Access
- Stream
- Section Corners



Locator Map 1:150,000

