



TIMBER SALE MAP

This information provided by authority of Part 525, 1994 PA 451, as amended.

Forest Management Unit Atlanta		County Montmorency	Mapped By Natzke	Date 09/19/2022	Page 1	of 1
Township 30N	Range 01E	Section(s) and Subdivision(s) Sec. 28, 29, 32, 33, 34 various			Scale 1:15,840	
Cover Type				Density		
A = Aspen	H = Hemlock	N = Marsh	U = Upland Brush	0 = Non Stocked	5 = Pole Timber Medium	
B = Paper Birch	J = Jack Pine	O = Oak	UM = Upland Mixed	1 = Seedling Sapling Poor	6 = Pole Timber Well	
C = Cedar	L = Lowland Brush	P = Lowland Poplar	V = Bog or Marsh	2 = Seedling Sapling Medium	7 = Saw Timber Poor	
D = Treed Bog	LM = Lowland Mixed	Q = Mixed Swamp Conifer	W = White Pine	3 = Seedling Sapling Well	8 = Saw Timber Medium	
E = Swamp Hdwoods	M = Mpl, Bch, Brch	R = Red Pine	X = Non Stocked	4 = Pole Timber Poor	9 = Saw Timber Well	
F = Spruce Fir	MC = Mixed Conifer	S = Black Spruce	Z = Water			
G = Grass	MD = Mixed Deciduous	T = Tamarack				

Press Eject RP

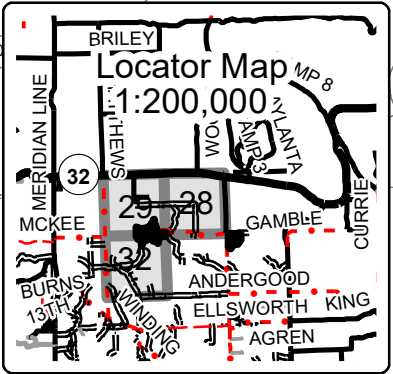
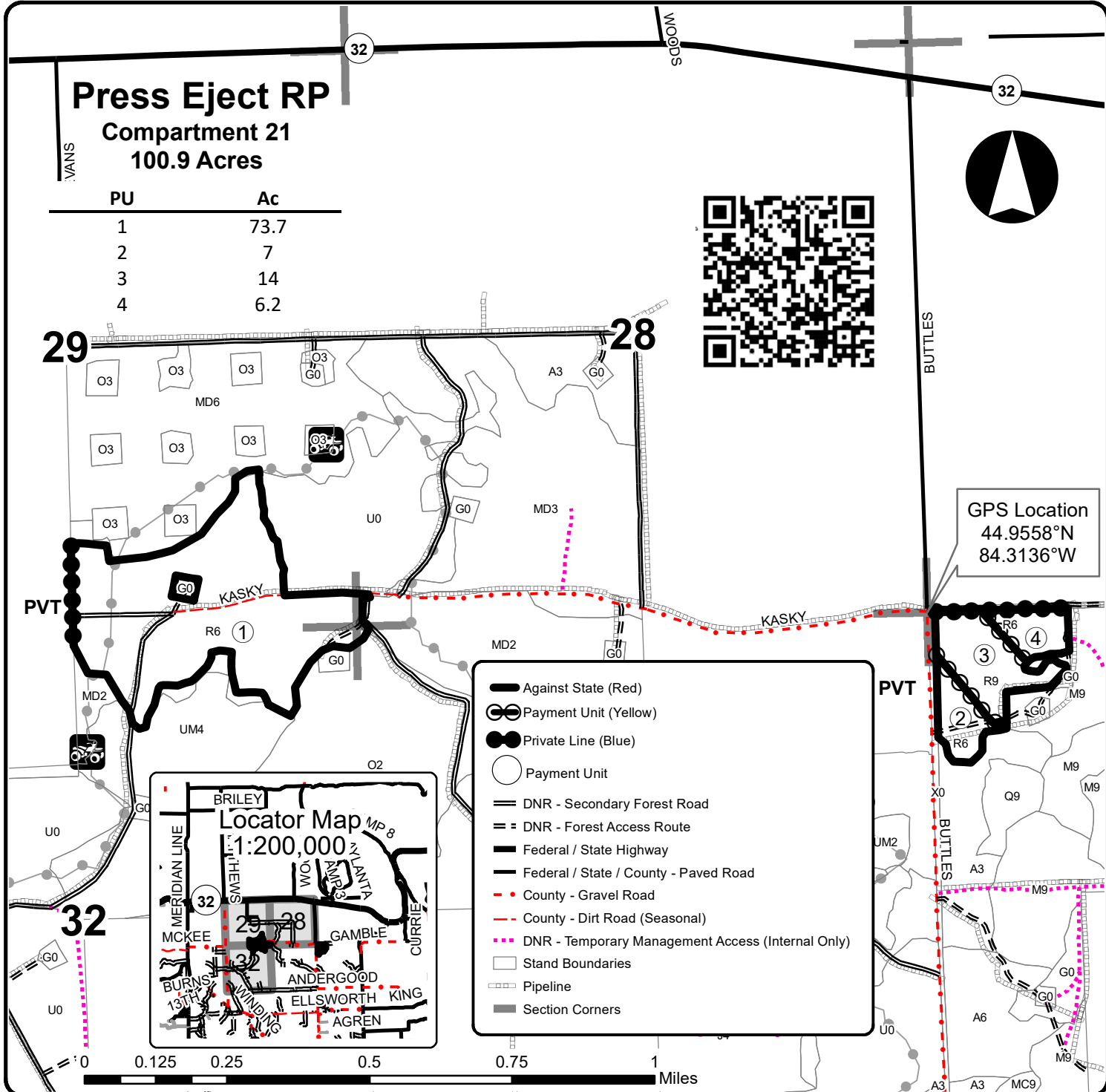
Compartment 21

100.9 Acres

PU	Ac
1	73.7
2	7
3	14
4	6.2



GPS Location
44.9558°N
84.3136°W



- Against State (Red)
- Payment Unit (Yellow)
- Private Line (Blue)
- Payment Unit
- DNR - Secondary Forest Road
- DNR - Forest Access Route
- Federal / State Highway
- Federal / State / County - Paved Road
- County - Gravel Road
- County - Dirt Road (Seasonal)
- DNR - Temporary Management Access (Internal Only)
- Stand Boundaries
- Pipeline
- Section Corners

