



TIMBER SALE MAP

This information provided by authority of Part 525, 1994 PA 451, as amended.

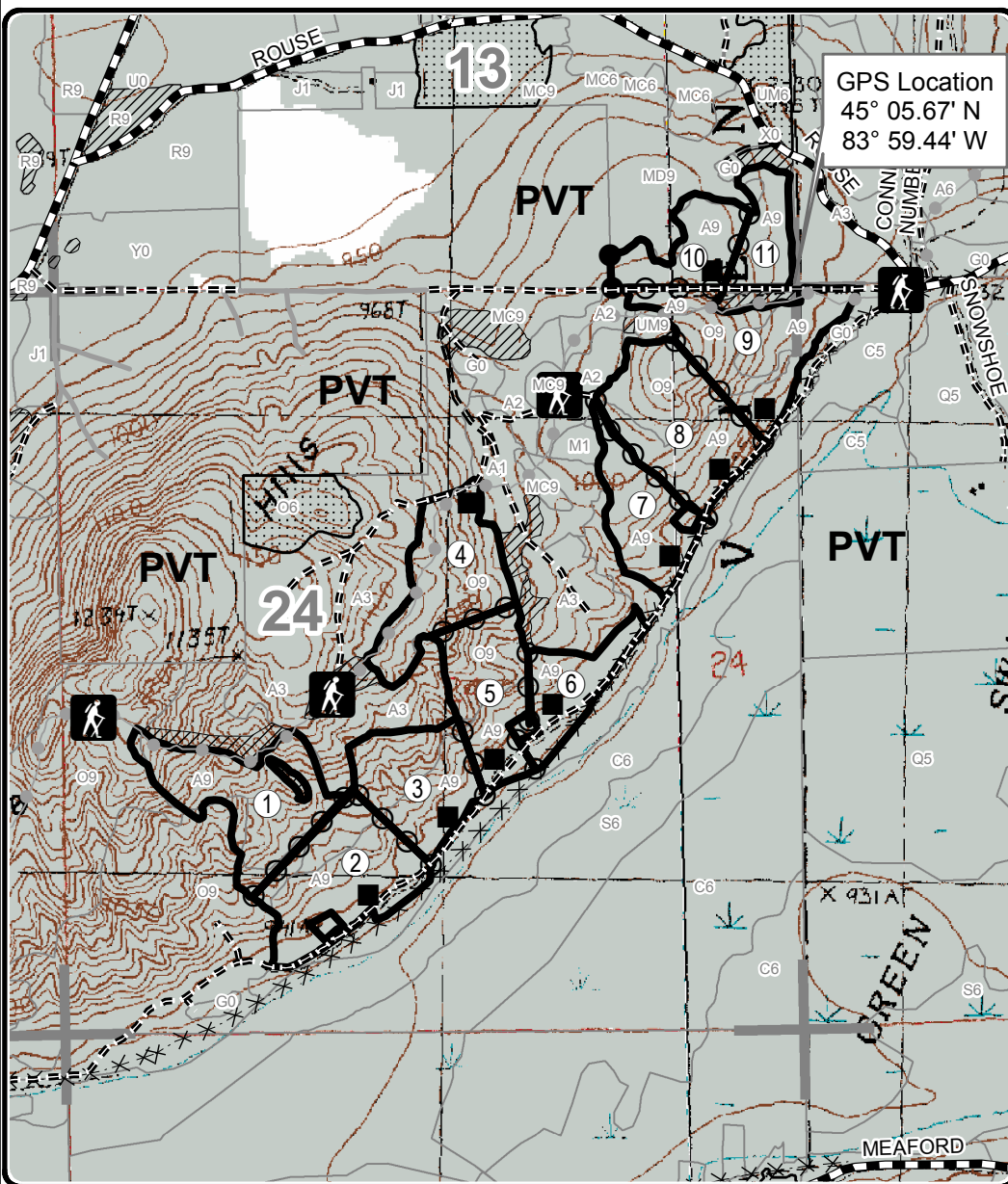
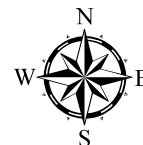
| | | | | | | |
|--|---------------------------|---|----------------------------|-----------------------------|--------------------------|----------------|
| Forest Management Unit Atlanta | | County Montmorency | Mapped By Barber | Date 08/16/2018 | Page 1 | of 1 |
| Township 31N | Range 01E / 02E | Section(s) and Subdivision(s) 13: SESE; 24: SENW,NE, SW, W2SE; / 19: NWNW | | | Scale 1:15,840 | |
| Cover Type | | | | Density | | |
| A = Aspen | H = Hemlock | N = Marsh | U = Upland Brush | 0 = Non Stocked | 5 = Pole Timber Medium | |
| B = Paper Birch | J = Jack Pine | O = Oak | UM = Upland Mixed | 1 = Seedling Sapling Poor | 6 = Pole Timber Well | |
| C = Cedar | L = Lowland Brush | P = Lowland Poplar | V = Bog or Marsh | 2 = Seedling Sapling Medium | 7 = Saw Timber Poor | |
| D = Treed Bog | LM = Lowland Mixed | Q = Mixed Swamp Conifer | W = White Pine | 3 = Seedling Sapling Well | 8 = Saw Timber Medium | |
| E = Swamp Hdwoods | M = Mpl, Bch, Brch | R = Red Pine | X = Non Stocked | 4 = Pole Timber Poor | 9 = Saw Timber Well | |
| F = Spruce Fir | MC = Mixed Conifer | S = Black Spruce | Z = Water | | | |
| G = Grass | MD = Mixed Deciduous | T = Tamarack | | | | |

| PU | Acres | PU | Acres | PU | Acres |
|----|-------|----|-------|----|-------|
| 1 | 17.6 | 5 | 13.6 | 9 | 18.2 |
| 2 | 18.2 | 6 | 8.7 | 10 | 9.1 |
| 3 | 14.0 | 7 | 10.9 | 11 | 6.8 |
| 4 | 16.1 | 8 | 19.1 | | |

Rattlesnake Bytes

Compartment 036

152.3 Acres



Legend

- Against State (Red)
- Payment Unit (Yellow)
- Private Line (Blue)
- PU_Label
- Landing
- Retention Area
- Stand Boundaries
- Secondary Forest Road
- Forest Access Route
- Gravel Road
- Private
- Abandoned Railroad
- Recreational Trail
- Hiking Trails
- Nearby Timber Sales
- Section Corners

Locator Map

1:150,000

