



# TIMBER SALE MAP

This information provided by authority of Part 525, 1994 PA 451, as amended.

|   |                     |  |                                   |                          |                  |                |
|---|---------------------|--|-----------------------------------|--------------------------|------------------|----------------|
| Forest Management Unit<br><b>Atlanta</b>      |                     | County<br><b>Presque Isle</b>  | Mapped By<br><b>J. St. Pierre</b> | Date<br><b>10/3/23</b>   | Page<br><b>1</b> | of<br><b>1</b> |
| Township<br><b>35N</b>                        | Range<br><b>02E</b> | Section(s) and Subdivision(s)<br><b>Sec.10: S1/2NW,N1/2SW Sec.15: NE,N1/2SE,SWSE</b> |                                   | Scale<br><b>1:15,840</b> |                  |                |
| Cruised By<br><b>J.St.Pierre, T.Kubitskey</b> |                     |  |                                   |                          |                  |                |

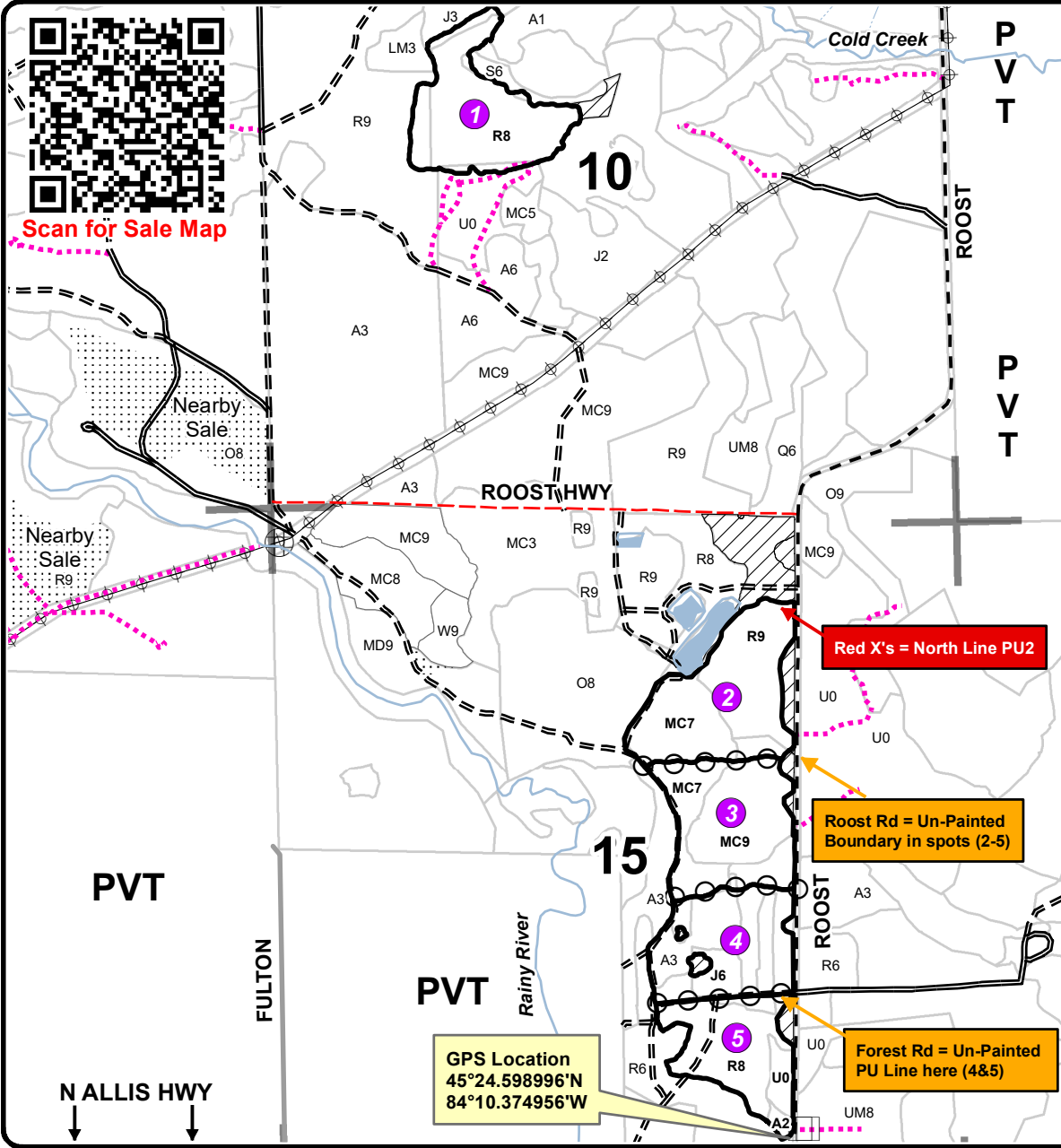
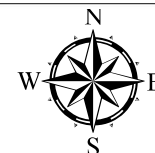
| Cover Type        |                      |                         |                   | Density                     |                        |
|-------------------|----------------------|-------------------------|-------------------|-----------------------------|------------------------|
| A = Aspen         | H = Hemlock          | N = Marsh               | U = Upland Brush  | 0 = Non Stocked             | 5 = Pole Timber Medium |
| B = Paper Birch   | J = Jack Pine        | O = Oak                 | UM = Upland Mixed | 1 = Seedling Sapling Poor   | 6 = Pole Timber Well   |
| C = Cedar         | L = Lowland Brush    | P = Lowland Poplar      | V = Bog or Marsh  | 2 = Seedling Sapling Medium | 7 = Saw Timber Poor    |
| D = Treed Bog     | LM = Lowland Mixed   | Q = Mixed Swamp Conifer | W = White Pine    | 3 = Seedling Sapling Well   | 8 = Saw Timber Medium  |
| E = Swamp Hdwoods | M = Mpl, Bch, Brch   | R = Red Pine            | X = Non Stocked   | 4 = Pole Timber Poor        | 9 = Saw Timber Well    |
| F = Spruce Fir    | MC = Mixed Conifer   | S = Black Spruce        | Z = Water         |                             |                        |
| G = Grass         | MD = Mixed Deciduous | T = Tamarack            |                   |                             |                        |

| PU       | Acres       | PU       | Acres       |
|----------|-------------|----------|-------------|
| <b>1</b> | <b>20.6</b> | <b>4</b> | <b>18.9</b> |
| <b>2</b> | <b>23.5</b> | <b>5</b> | <b>15.8</b> |
| <b>3</b> | <b>21.4</b> |          |             |

## SeCoya Pine

### Compartment 144

100.2 Acres



### Legend

- Against State (Red & Roost Rd)
- Retention Area (Red & Red X's)
- Payment Unit (Yellow & Forest Rd)
- Nearby Sales
- Secondary Forest Road
- Forest Access Route
- Gravel Road
- County Road - Seasonal
- Private
- Closed Rds
- Gate
- Berms
- Powerline
- Ponds (old gravel pits)
- Drain
- Intermittent Stream
- Lake/Pond
- Perennial River

Red X's = North Line PU2

Roost Rd = Un-Painted Boundary in spots (2-5)

Forest Rd = Un-Painted PU Line here (4&5)

GPS Location  
 45°24.598996°N  
 84°10.374956°W

