



Sale Number	Year
54 - 006	20

TIMBER SALE MAP

This information provided by authority of Part 525, 1994 PA 451, as amended.

Forest Management Unit Atlanta		County Montmorency	Mapped By Collin Zaremba	Date 03/05/2020	Page 2	of 2
Township 31N	Range 03E	Section(s) and Subdivision(s) Sec 12: N1/2NW,SWSW. Sec 13: SENE,NESE,S1/2SE. Sec 24: N1/2NE			Scale 1:15,840	

Cover Type

A = Aspen	H = Hemlock	N = Marsh	U = Upland Brush
B = Paper Birch	J = Jack Pine	O = Oak	UM = Upland Mixed
C = Cedar	L = Lowland Brush	P = Lowland Poplar	V = Bog or Marsh
D = Treed Bog	LM = Lowland Mixed	Q = Mixed Swamp Conifer	W = White Pine
E = Swamp Hdwoods	M = Mpl, Bch, Brch	R = Red Pine	X = Non Stocked
F = Spruce Fir	MC = Mixed Conifer	S = Black Spruce	Z = Water
G = Grass	MD = Mixed Deciduous	T = Tamarack	

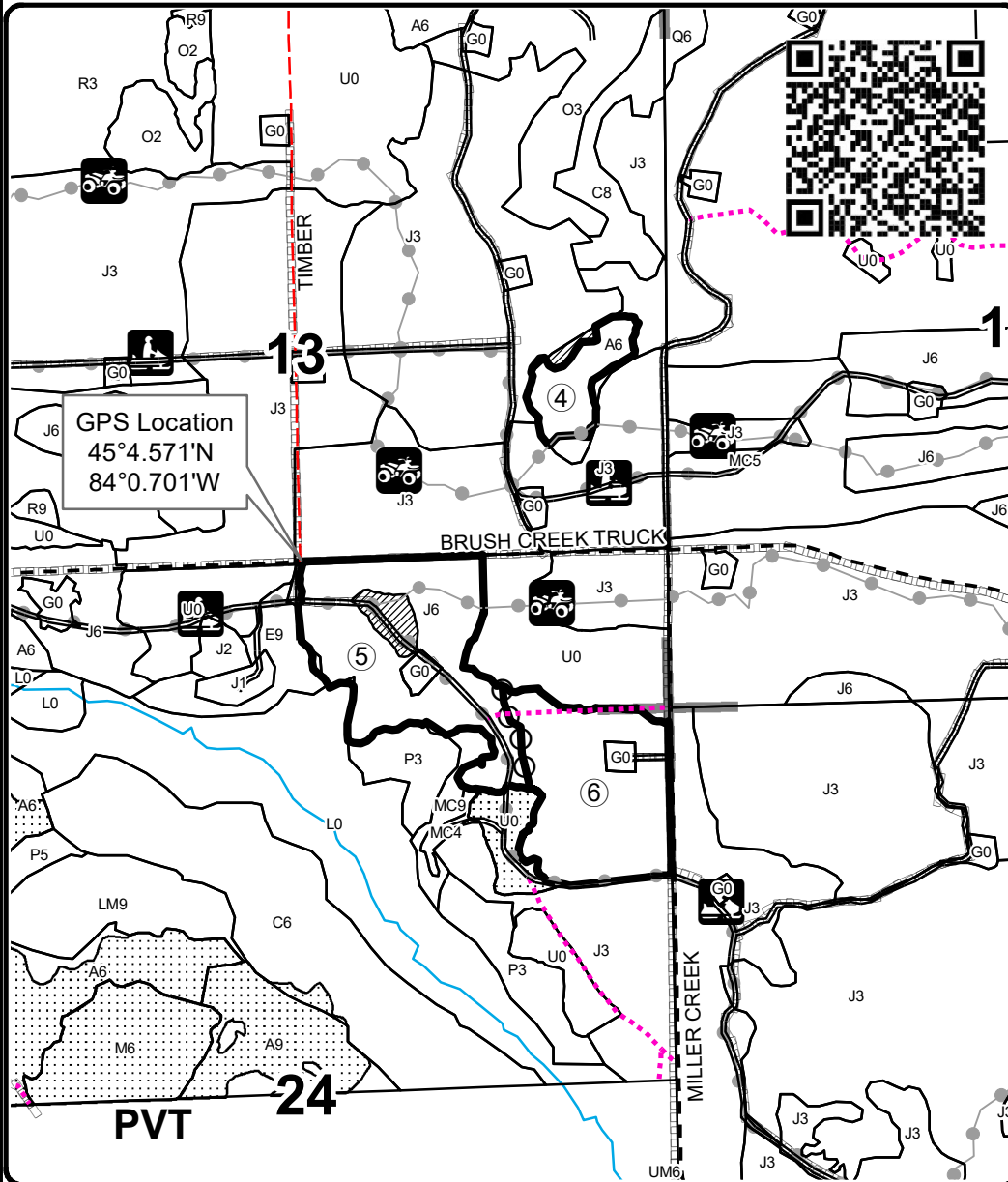
Density

0 = Non Stocked	5 = Pole Timber Medium
1 = Seedling Sapling Poor	6 = Pole Timber Well
2 = Seedling Sapling Medium	7 = Saw Timber Poor
3 = Seedling Sapling Well	8 = Saw Timber Medium
4 = Pole Timber Poor	9 = Saw Timber Well

PU	Acres	PU	Acres
1	24.3	4	7.9
2	11.8	5	33.1
3	10.0	6	28.4

Snow Dog Mix

Compartment 48
115.5 Acres



Legend

- Against State (Red)
- Payment Unit (Yellow)
- Stand Boundaries
- Retention Area
- Nearby Timber Sales
- Secondary Forest Road
- Gravel Road
- County Road - Seasonal
- Temporary Management Access
- Recreational Trail
- Perennial River
- Section Corners
- Pipeline
- Payment Unit Number

Locator Map 1:150,000

