



TIMBER SALE MAP

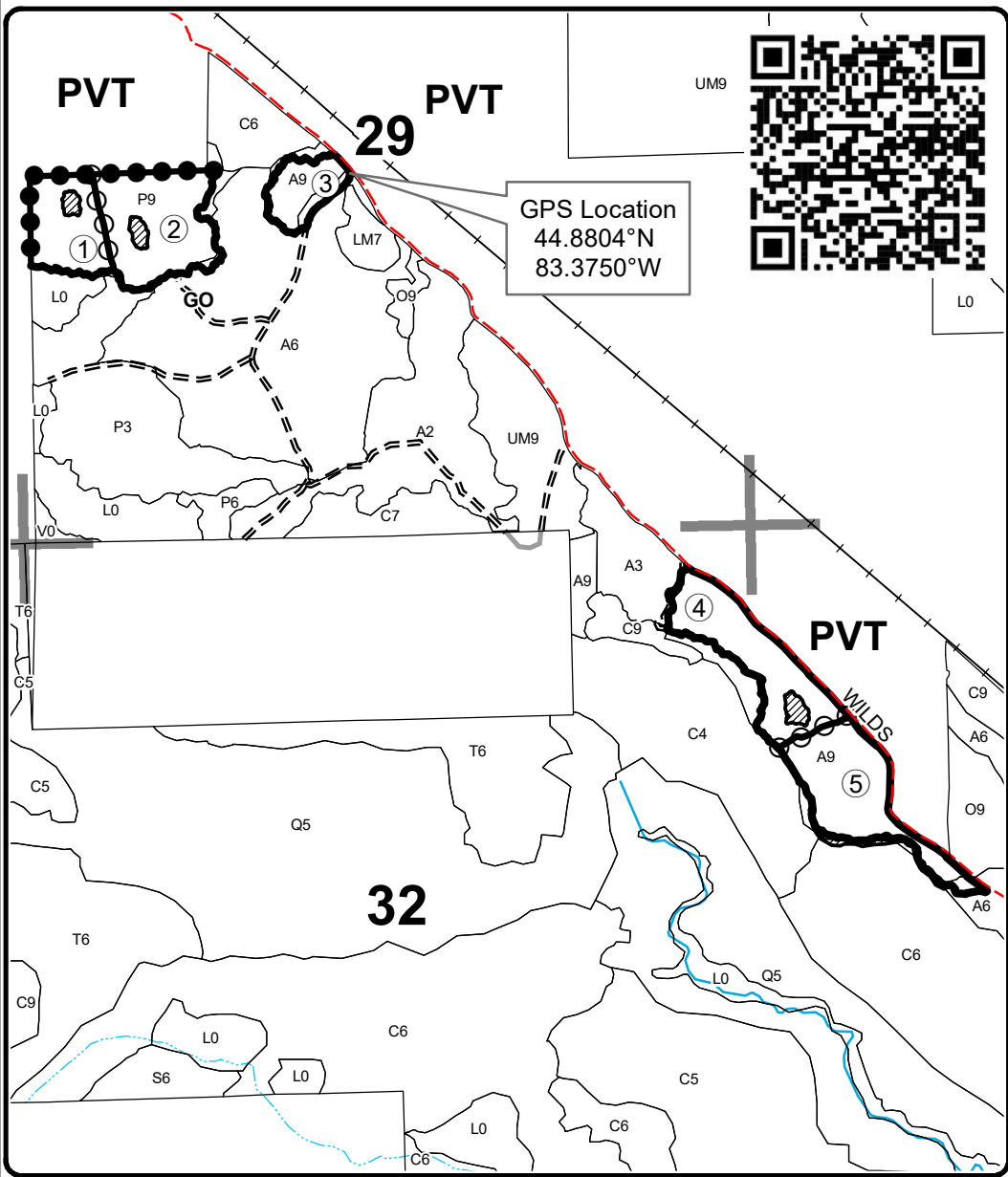
This information provided by authority of Part 525, 1994 PA 451, as amended.

Forest Management Unit Atlanta		County Alpena	Mapped By D. Parris	Date 09/24/2022	Page 1	of 1
Township 29N	Range 09E	Section(s) and Subdivision(s) Sec 29 SENW,N1/2SW; Sec 32 NENE; Sec 33 NWNW,S1/2NW,NESW			Scale 1:15,840	
Cover Type				Density		
A = Aspen	H = Hemlock	N = Marsh	U = Upland Brush	0 = Non Stocked	5 = Pole Timber Medium	
B = Paper Birch	J = Jack Pine	O = Oak	UM = Upland Mixed	1 = Seedling Sapling Poor	6 = Pole Timber Well	
C = Cedar	L = Lowland Brush	P = Lowland Poplar	V = Bog or Marsh	2 = Seedling Sapling Medium	7 = Saw Timber Poor	
D = Treed Bog	LM = Lowland Mixed	Q = Mixed Swamp Conifer	W = White Pine	3 = Seedling Sapling Well	8 = Saw Timber Medium	
E = Swamp Hdwoods	M = Mpl, Bch, Brch	R = Red Pine	X = Non Stocked	4 = Pole Timber Poor	9 = Saw Timber Well	
F = Spruce Fir	MC = Mixed Conifer	S = Black Spruce	Z = Water			
G = Grass	MD = Mixed Deciduous	T = Tamarack				

PU	Acres	PU	Acres
1	7.9	4	12.4
2	13.0	5	13.2
3	4.9		

Wilds Road Aspen and Oak

Compartment 85
51.4 Acres



Legend

- Against State (Red)
- Payment Unit (Orange)
- Private Line (Blue)
- Retention Area (Red)
- Stand Boundaries
- Payment Unit
- Forest Access Route
- County Road - Seasonal
- Private
- Active Railroad
- Intermittent Stream
- Perennial River
- Section Corners

Locator Map 1:200,000

