



TIMBER SALE MAP

This information provided by authority of Part 525, 1994 PA 451, as amended.

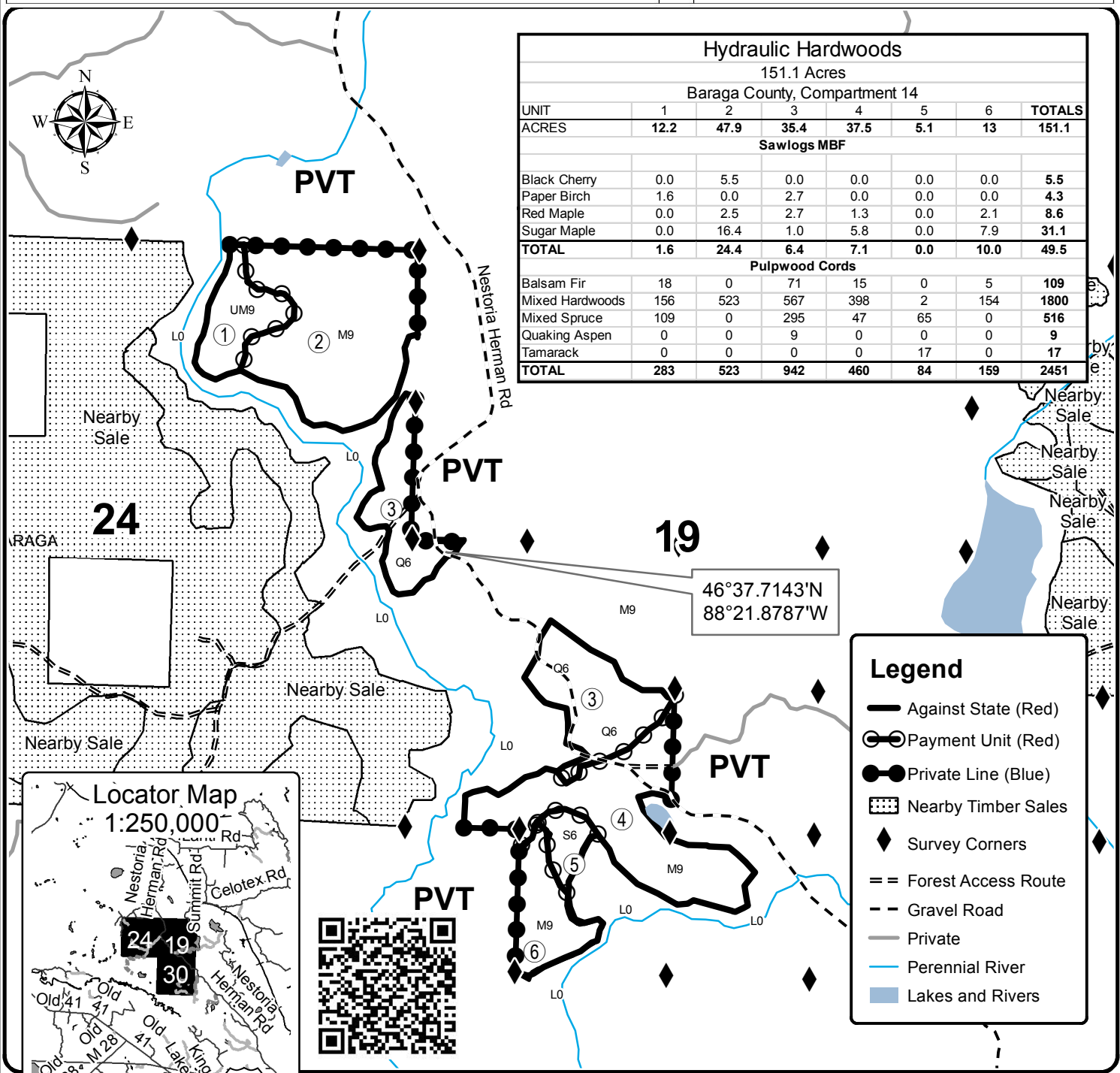
Forest Management Unit Baraga		County Baraga	Mapped By Ryan Mattila	Date 4/18/2019	Page 1	of 1
Township 49N	Range 32&33 W	Section(s) and Subdivision(s) 49N 33W - Sec 24; NE1/4, NESE. 49N 32W - Sec 19; SW1/4. Sec 30; NENW, NWNE.		Scale 1:15,840		

Cover Type

- | | | | |
|-------------------|----------------------|-------------------------|-------------------|
| A = Aspen | H = Hemlock | N = Marsh | U = Upland Brush |
| B = Paper Birch | J = Jack Pine | O = Oak | UM = Upland Mixed |
| C = Cedar | L = Lowland Brush | P = Lowland Poplar | V = Bog or Marsh |
| D = Treed Bog | LM = Lowland Mixed | Q = Mixed Swamp Conifer | W = White Pine |
| E = Swamp Hdwoods | M = Mpl, Bch, Brch | R = Red Pine | X = Non Stocked |
| F = Spruce Fir | MC = Mixed Conifer | S = Black Spruce | Z = Water |
| G = Grass | MD = Mixed Deciduous | T = Tamarack | |

Density

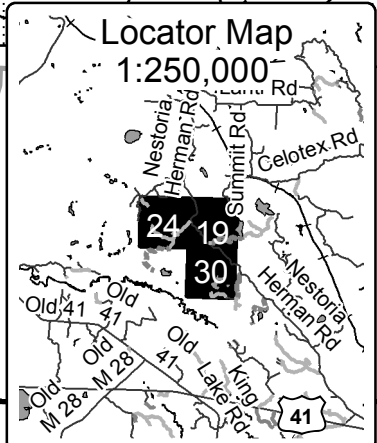
- | | |
|-----------------------------|------------------------|
| 0 = Non Stocked | 5 = Pole Timber Medium |
| 1 = Seedling Sapling Poor | 6 = Pole Timber Well |
| 2 = Seedling Sapling Medium | 7 = Saw Timber Poor |
| 3 = Seedling Sapling Well | 8 = Saw Timber Medium |
| 4 = Pole Timber Poor | 9 = Saw Timber Well |



Hydraulic Hardwoods

151.1 Acres
Baraga County, Compartment 14

UNIT	1	2	3	4	5	6	TOTALS
ACRES	12.2	47.9	35.4	37.5	5.1	13	151.1
Sawlogs MBF							
Black Cherry	0.0	5.5	0.0	0.0	0.0	0.0	5.5
Paper Birch	1.6	0.0	2.7	0.0	0.0	0.0	4.3
Red Maple	0.0	2.5	2.7	1.3	0.0	2.1	8.6
Sugar Maple	0.0	16.4	1.0	5.8	0.0	7.9	31.1
TOTAL	1.6	24.4	6.4	7.1	0.0	10.0	49.5
Pulpwood Cords							
Balsam Fir	18	0	71	15	0	5	109
Mixed Hardwoods	156	523	567	398	2	154	1800
Mixed Spruce	109	0	295	47	65	0	516
Quaking Aspen	0	0	9	0	0	0	9
Tamarack	0	0	0	0	17	0	17
TOTAL	283	523	942	460	84	159	2451



Legend

- Against State (Red)
- Payment Unit (Red)
- Private Line (Blue)
- Nearby Timber Sales
- Survey Corners
- Forest Access Route
- Gravel Road
- Private
- Perennial River
- Lakes and Rivers

