

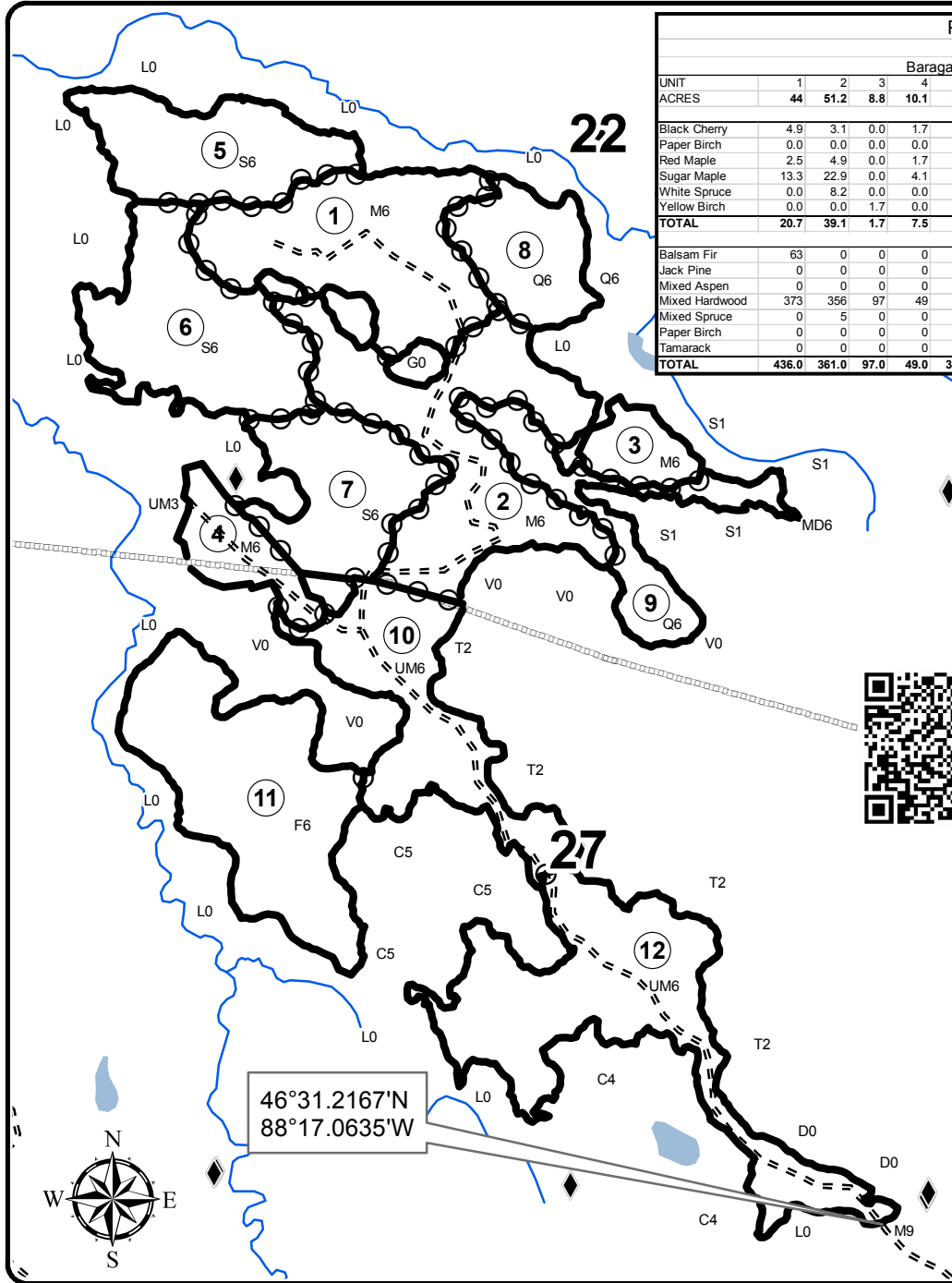


TIMBER SALE MAP

This information provided by authority of Part 525, 1994 PA 451, as amended.

Forest Management Unit Baraga		County Baraga	Mapped By Ryan Mattila	Date 5/22/2018	Page 1	of 1
Township 48N	Range 32W	Section(s) and Subdivision(s) Sec 28; E1/2NE, Sec 21; E1/2SE, SENE. Sec 34; NENE. Sec 22; SWNW, S1/2SE, SW1/4. Sec 27; W1/2, N1/2NE, SE1/4.		Scale 1:15,840		
Cruised By Baraga Staff						

Cover Type				Density	
A = Aspen	H = Hemlock	N = Marsh	U = Upland Brush	0 = Non Stocked	5 = Pole Timber Medium
B = Paper Birch	J = Jack Pine	O = Oak	UM = Upland Mixed	1 = Seedling Sapling Poor	6 = Pole Timber Well
C = Cedar	L = Lowland Brush	P = Lowland Poplar	V = Bog or Marsh	2 = Seedling Sapling Medium	7 = Saw Timber Poor
D = Treed Bog	LM = Lowland Mixed	Q = Mixed Swamp Conifer	W = White Pine	3 = Seedling Sapling Well	8 = Saw Timber Medium
E = Swamp Hdwoods	M = Mpl, Bch, Brch	R = Red Pine	X = Non Stocked	4 = Pole Timber Poor	9 = Saw Timber Well
F = Spruce Fir	MC = Mixed Conifer	S = Black Spruce	Z = Water		
G = Grass	MD = Mixed Deciduous	T = Tamarack			



Partridge SBW													
394.5 Acres													
Baraga County, Compartment 20													
UNIT	1	2	3	4	5	6	7	8	9	10	11	12	TOTALS
ACRES	44	51.2	8.8	10.1	28.7	38.8	26.6	19.1	21.1	34.5	52.8	58.8	394.5
Sawlogs MBF													
Black Cherry	4.9	3.1	0.0	1.7	0.0	0.0	0.0	0.0	0.0	0.0	0.0	0.0	9.7
Paper Birch	0.0	0.0	0.0	0.0	0.6	3.8	0.7	0.0	0.0	2.3	0.0	0.0	7.4
Red Maple	2.5	4.9	0.0	1.7	0.0	0.0	0.0	0.0	0.0	0.0	0.0	0.0	9.1
Sugar Maple	13.3	22.9	0.0	4.1	0.0	0.0	0.0	0.0	0.0	0.0	0.0	0.0	40.3
White Spruce	0.0	8.2	0.0	0.0	0.0	0.0	0.0	0.0	0.0	0.0	0.0	0.0	8.2
Yellow Birch	0.0	0.0	1.7	0.0	0.0	0.0	0.0	0.0	0.0	0.0	0.0	0.0	1.7
TOTAL	20.7	39.1	1.7	7.5	0.6	3.8	0.7	0.0	0.0	2.3	0.0	0.0	76.4
Pulpwood Cords													
Balsam Fir	63	0	0	0	40	32	33	33	49	85	229	151	715
Jack Pine	0	0	0	0	0	0	0	0	0	0	4	0	4
Mixed Aspen	0	0	0	0	0	0	0	0	27	15	37	46	125
Mixed Hardwood	373	356	97	49	118	138	86	92	74	42	109	43	1577
Mixed Spruce	0	5	0	0	162	354	70	41	50	241	276	113	1312
Paper Birch	0	0	0	0	11	95	41	17	22	65	34	55	340
Tamarack	0	0	0	0	9	40	5	5	19	45	217	226	566
TOTAL	436.0	361.0	97.0	49.0	340.0	659.0	235.0	188.0	241.0	493.0	634.0	906.0	4639.0

Legend

- Against State (Red)
- ⊖ Payment Unit (Red)
- Payment Unit Label
- == Poor Dirt Roads
- Lakes and Rivers All
- River
- ◆ Survey Corners
- ⊠ Pipeline

