



TIMBER SALE MAP

This information provided by authority of Part 525, 1994 PA 451, as amended.

Forest Management Unit Baraga		County Baraga	Mapped By Ryan Mattila	Date 4/1/2020	Page 1	of 1
Township 47N	Range 34W	Section(s) and Subdivision(s) Sec 2: S1/2. Sec 10: N1/2NE. Sec 11: S1/2NW, N1/2SW, SWNE. (See Map Below)		Scale 1:15,840		

Cover Type

A = Aspen	H = Hemlock	N = Marsh	U = Upland Brush
B = Paper Birch	J = Jack Pine	O = Oak	UM = Upland Mixed
C = Cedar	L = Lowland Brush	P = Lowland Poplar	V = Bog or Marsh
D = Treed Bog	LM = Lowland Mixed	Q = Mixed Swamp Conifer	W = White Pine
E = Swamp Hdwoods	M = Mpl, Bch, Brch	R = Red Pine	X = Non Stocked
F = Spruce Fir	MC = Mixed Conifer	S = Black Spruce	Z = Water
G = Grass	MD = Mixed Deciduous	T = Tamarack	

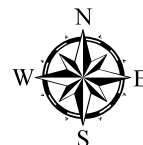
Density

0 = Non Stocked	5 = Pole Timber Medium
1 = Seedling Sapling Poor	6 = Pole Timber Well
2 = Seedling Sapling Medium	7 = Saw Timber Poor
3 = Seedling Sapling Well	8 = Saw Timber Medium
4 = Pole Timber Poor	9 = Saw Timber Well

Legend

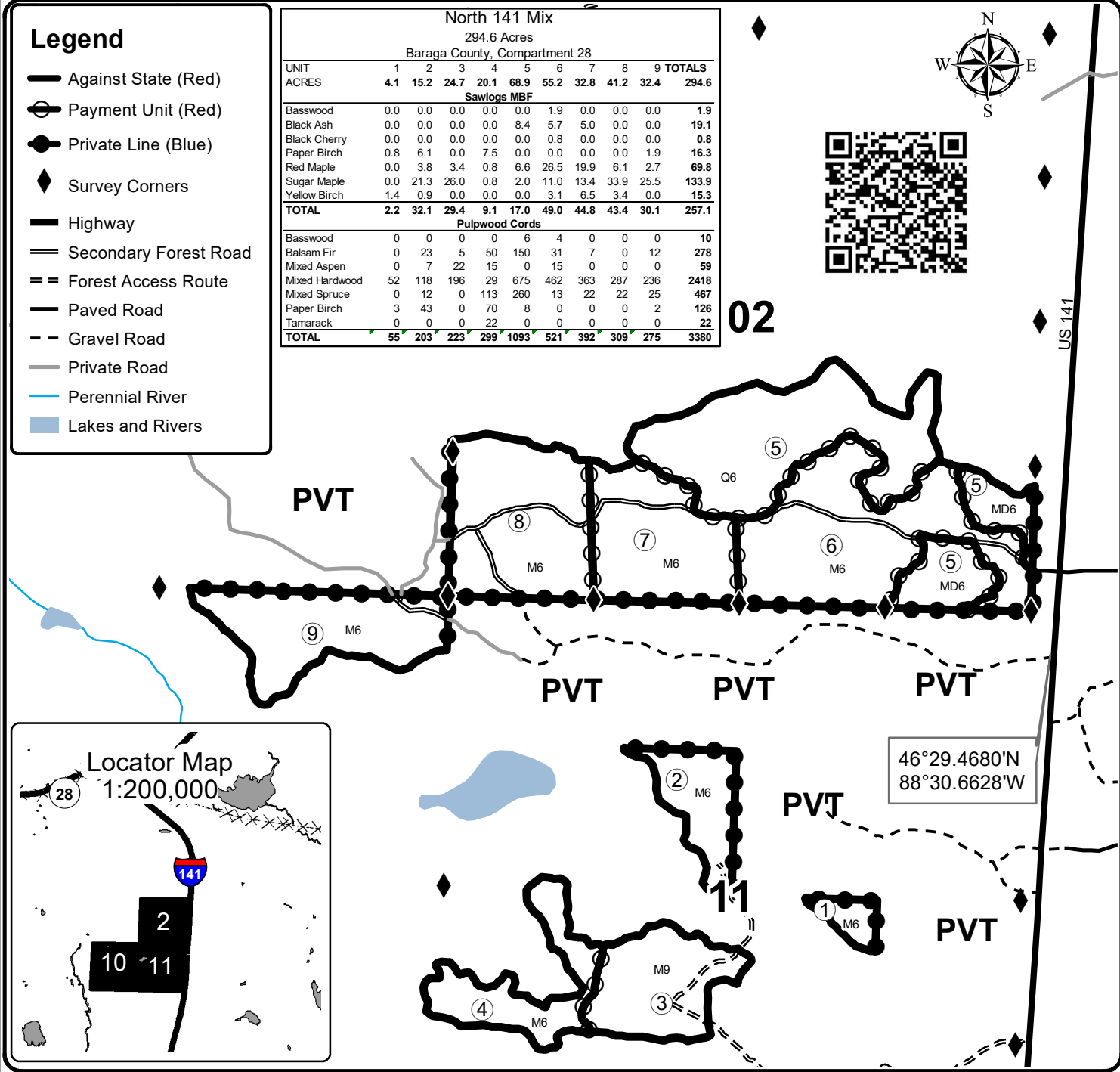
- Against State (Red)
- Payment Unit (Red)
- Private Line (Blue)
- Survey Corners
- Highway
- Secondary Forest Road
- Forest Access Route
- Paved Road
- Gravel Road
- Private Road
- Perennial River
- Lakes and Rivers

North 141 Mix										
294.6 Acres										
Baraga County, Compartment 28										
UNIT	1	2	3	4	5	6	7	8	9	TOTALS
ACRES	4.1	15.2	24.7	20.1	68.9	55.2	32.8	41.2	32.4	294.6
Sawlogs MBF										
Basswood	0.0	0.0	0.0	0.0	0.0	1.9	0.0	0.0	0.0	1.9
Black Ash	0.0	0.0	0.0	0.0	8.4	5.7	5.0	0.0	0.0	19.1
Black Cherry	0.0	0.0	0.0	0.0	0.0	0.8	0.0	0.0	0.0	0.8
Paper Birch	0.8	6.1	0.0	7.5	0.0	0.0	0.0	0.0	1.9	16.3
Red Maple	0.0	3.8	3.4	0.8	6.6	26.5	19.9	6.1	2.7	69.8
Sugar Maple	0.0	21.3	26.0	0.8	2.0	11.0	13.4	33.9	25.5	133.9
Yellow Birch	1.4	0.9	0.0	0.0	0.0	3.1	6.5	3.4	0.0	15.3
TOTAL	2.2	32.1	29.4	9.1	17.0	49.0	44.8	43.4	30.1	257.1
Pulpwood Cords										
Basswood	0	0	0	0	6	4	0	0	0	10
Balsam Fir	0	23	5	50	150	31	7	0	12	278
Mixed Aspen	0	7	22	15	0	15	0	0	0	59
Mixed Hardwood	52	118	196	29	675	462	363	287	236	2418
Mixed Spruce	0	12	0	113	260	13	22	22	25	467
Paper Birch	3	43	0	70	8	0	0	0	2	126
Tamarack	0	0	0	22	0	0	0	0	0	22
TOTAL	55	203	223	299	1093	521	392	309	275	3380



02

US 141



46°29.4680'N
88°30.6628'W

