

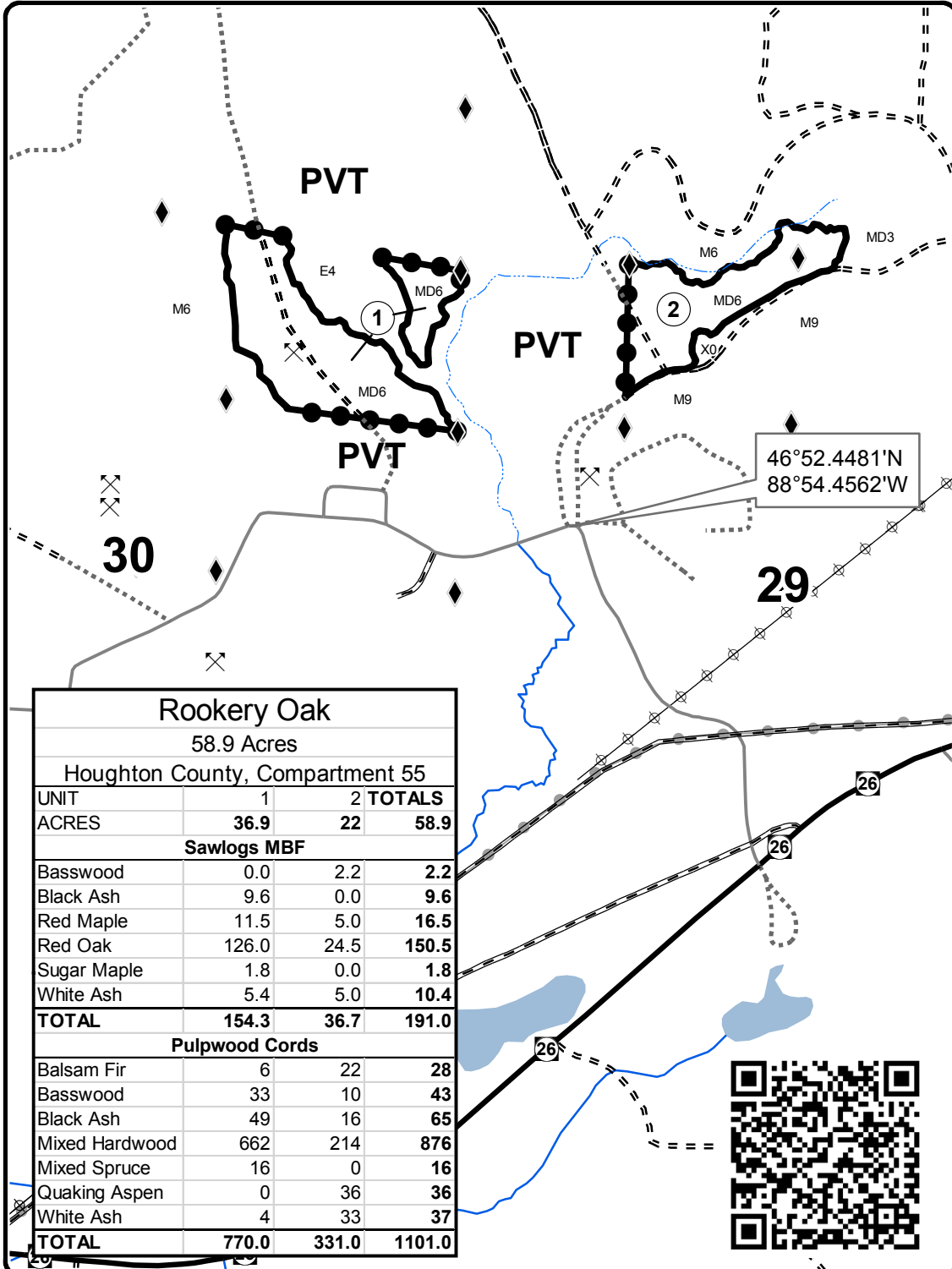


TIMBER SALE MAP

This information provided by authority of Part 525, 1994 PA 451, as amended.

Forest Management Unit Baraga		County Houghton	Mapped By Ryan Mattila	Date 12/27/2017	Page 1	of 1
Township 52N	Range 36W	Section(s) and Subdivision(s) Sec 20; SESW, SWSE. Sec 29; NENW, NWNE. Sec 30; N1/2SE.		Scale 1:15,840		

Cover Type				Density	
A = Aspen	H = Hemlock	N = Marsh	U = Upland Brush	0 = Non Stocked	5 = Pole Timber Medium
B = Paper Birch	J = Jack Pine	O = Oak	UM = Upland Mixed	1 = Seedling Sapling Poor	6 = Pole Timber Well
C = Cedar	L = Lowland Brush	P = Lowland Poplar	V = Bog or Marsh	2 = Seedling Sapling Medium	7 = Saw Timber Poor
D = Treed Bog	LM = Lowland Mixed	Q = Mixed Swamp Conifer	W = White Pine	3 = Seedling Sapling Well	8 = Saw Timber Medium
E = Swamp Hdwoods	M = Mpl, Bch, Brch	R = Red Pine	X = Non Stocked	4 = Pole Timber Poor	9 = Saw Timber Well
F = Spruce Fir	MC = Mixed Conifer	S = Black Spruce	Z = Water		
G = Grass	MD = Mixed Deciduous	T = Tamarack			



Legend

- ◆ Survey Corners
- Highway
- Paved Roads
- Gravel Roads
- == Poor Dirt Roads
- Closed
- Stream
- River
- Lakes and Rivers
- Recreational Trail
- Against State (Red)
- Private Line (Blue)
- Payment Unit Label
- ✕ Mineral Feature
- ⊕ Powerline

Rookery Oak			
58.9 Acres			
Houghton County, Compartment 55			
UNIT	1	2	TOTALS
ACRES	36.9	22	58.9
Sawlogs MBF			
Basswood	0.0	2.2	2.2
Black Ash	9.6	0.0	9.6
Red Maple	11.5	5.0	16.5
Red Oak	126.0	24.5	150.5
Sugar Maple	1.8	0.0	1.8
White Ash	5.4	5.0	10.4
TOTAL	154.3	36.7	191.0
Pulpwood Cords			
Balsam Fir	6	22	28
Basswood	33	10	43
Black Ash	49	16	65
Mixed Hardwood	662	214	876
Mixed Spruce	16	0	16
Quaking Aspen	0	36	36
White Ash	4	33	37
TOTAL	770.0	331.0	1101.0

