



TIMBER SALE MAP

This information provided by authority of Part 525, 1994 PA 451, as amended.

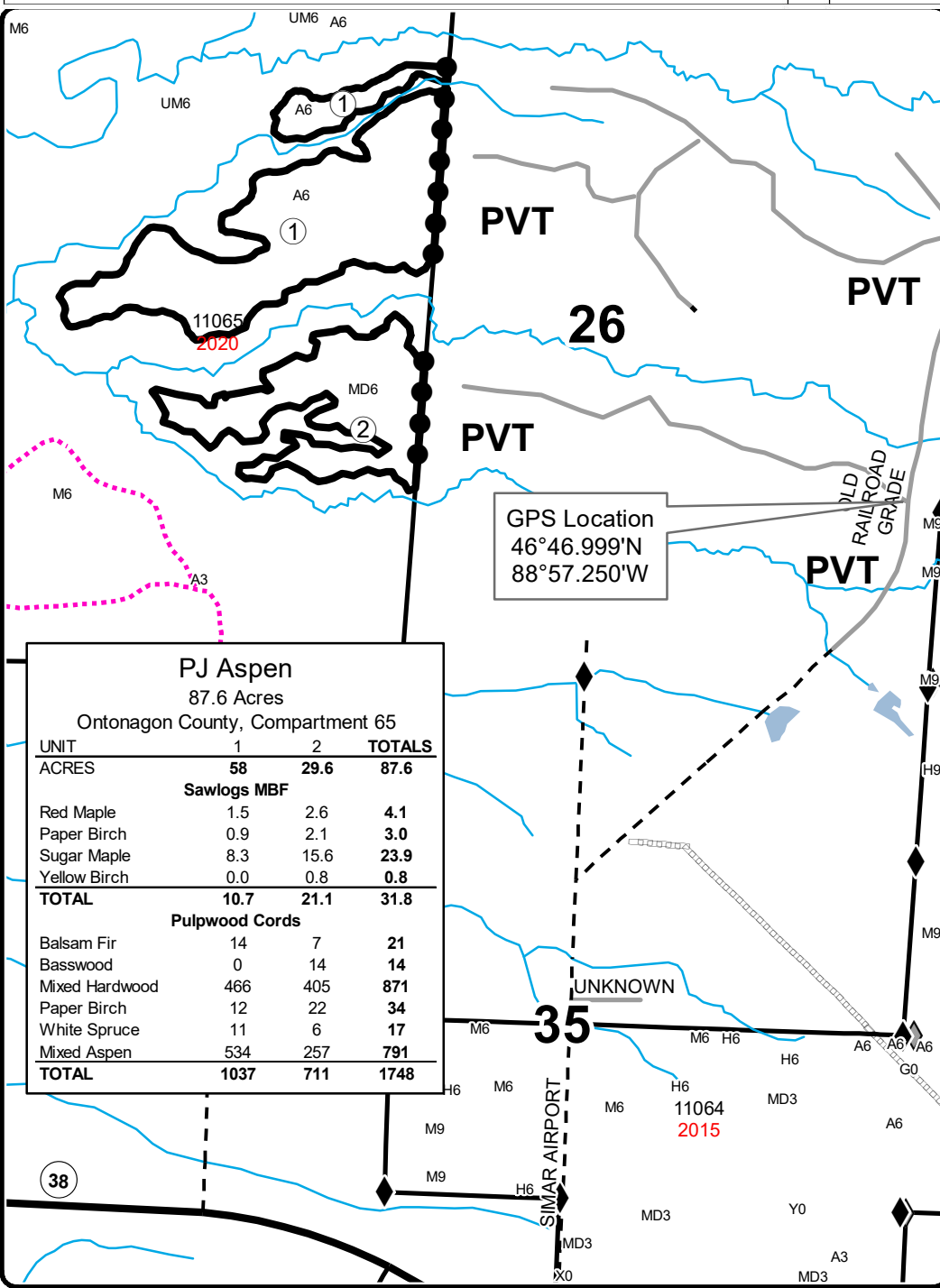
Forest Management Unit Baraga		County Ontonagon	Mapped By Carlson	Date 1/28/2021	Page 1	of 1
Township 51N	Range 37W	Section(s) and Subdivision(s) Sec 26 - W1/2NW, NWSW; Sec 27 - S1/2NE, N1/2SE		Scale 1:15,840		
Cruised By Baraga Staff						

Cover Type

A = Aspen	H = Hemlock	N = Marsh	U = Upland Brush
B = Paper Birch	J = Jack Pine	O = Oak	UM = Upland Mixed
C = Cedar	L = Lowland Brush	P = Lowland Poplar	V = Bog or Marsh
D = Treed Bog	LM = Lowland Mixed	Q = Mixed Swamp Conifer	W = White Pine
E = Swamp Hdwoods	M = Mpl, Bch, Brch	R = Red Pine	X = Non Stocked
F = Spruce Fir	MC = Mixed Conifer	S = Black Spruce	Z = Water
G = Grass	MD = Mixed Deciduous	T = Tamarack	

Density

0 = Non Stocked	5 = Pole Timber Medium
1 = Seedling Sapling Poor	6 = Pole Timber Well
2 = Seedling Sapling Medium	7 = Saw Timber Poor
3 = Seedling Sapling Well	8 = Saw Timber Medium
4 = Pole Timber Poor	9 = Saw Timber Well

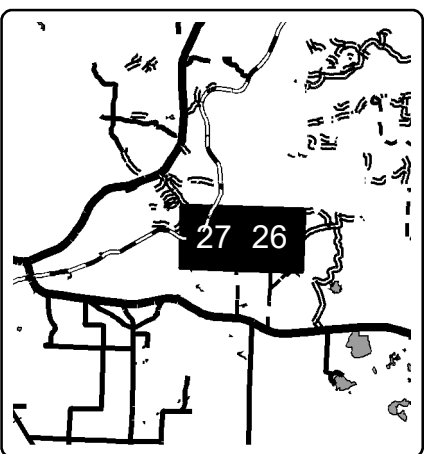


Legend

- ◆ Survey Corners
- Paved Road
- - - Gravel Road
- Private
- Lakes and Rivers
- Against State (Red)
- Private Line (Blue)



Locator Map
1:200,000



PJ Aspen			
87.6 Acres			
Ontonagon County, Compartment 65			
UNIT	1	2	TOTALS
ACRES	58	29.6	87.6
Sawlogs MBF			
Red Maple	1.5	2.6	4.1
Paper Birch	0.9	2.1	3.0
Sugar Maple	8.3	15.6	23.9
Yellow Birch	0.0	0.8	0.8
TOTAL	10.7	21.1	31.8
Pulpwood Cords			
Balsam Fir	14	7	21
Basswood	0	14	14
Mixed Hardwood	466	405	871
Paper Birch	12	22	34
White Spruce	11	6	17
Mixed Aspen	534	257	791
TOTAL	1037	711	1748

