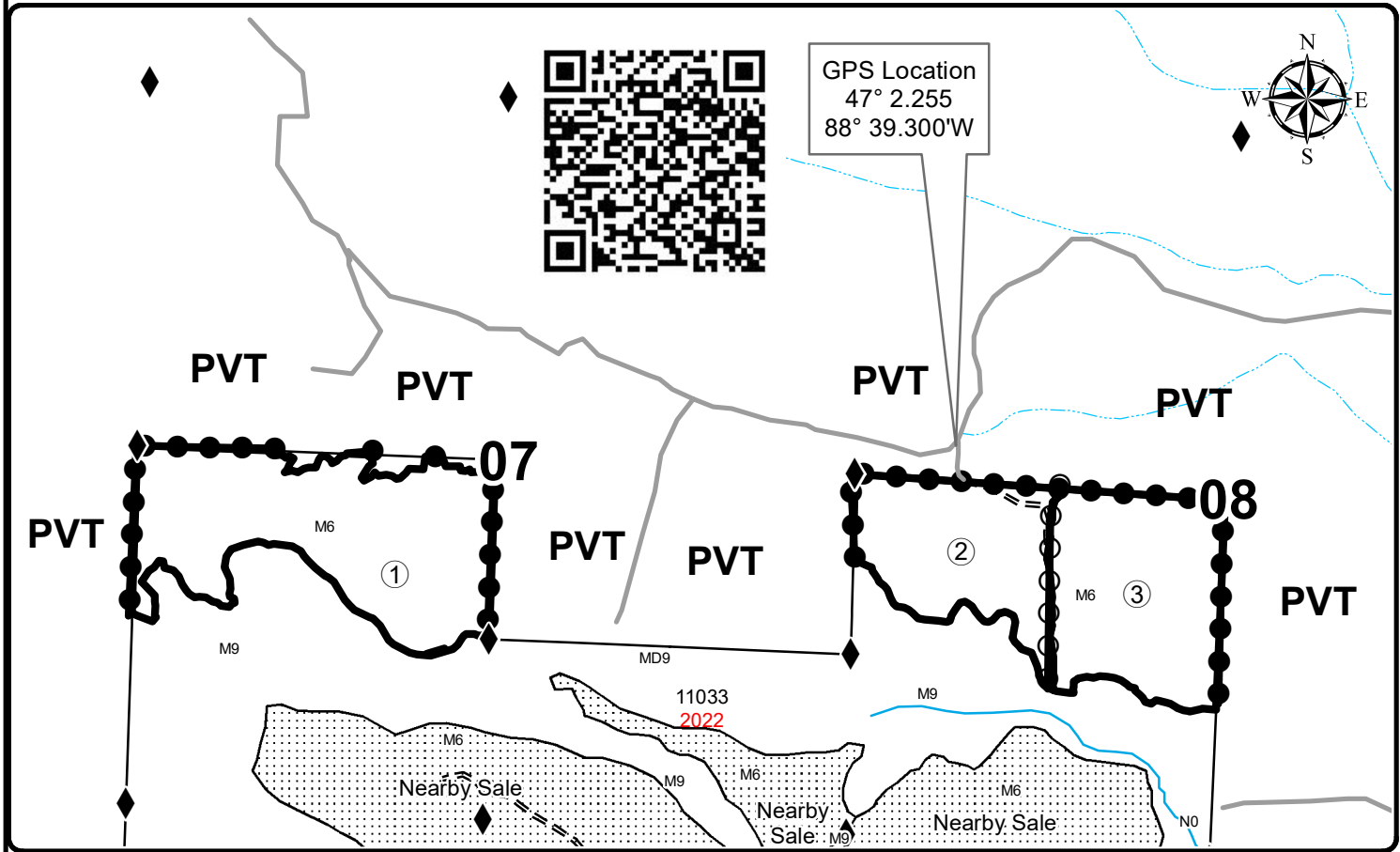




TIMBER SALE MAP

This information provided by authority of Part 525, 1994 PA 451, as amended.

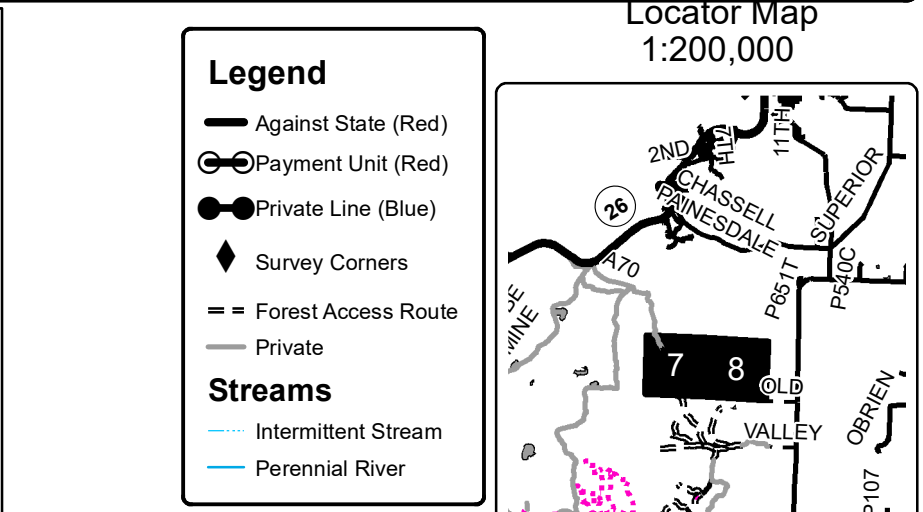
Forest Management Unit Baraga		County Houghton	Mapped By Carlson	Date 9/18/2020	Page 1	of 1
Township 53N	Range 34W	Section(s) and Subdivision(s) Sec 7 - N1/2,SESW; Sec 8 - N1/2,SESW		Scale 1:15,840		
Cover Type				Density		
A = Aspen	H = Hemlock	N = Marsh	U = Upland Brush	0 = Non Stocked	5 = Pole Timber Medium	
B = Paper Birch	J = Jack Pine	O = Oak	UM = Upland Mixed	1 = Seedling Sapling Poor	6 = Pole Timber Well	
C = Cedar	L = Lowland Brush	P = Lowland Poplar	V = Bog or Marsh	2 = Seedling Sapling Medium	7 = Saw Timber Poor	
D = Treed Bog	LM = Lowland Mixed	Q = Mixed Swamp Conifer	W = White Pine	3 = Seedling Sapling Well	8 = Saw Timber Medium	
E = Swamp Hdwoods	M = Mpl, Bch, Brch	R = Red Pine	X = Non Stocked	4 = Pole Timber Poor	9 = Saw Timber Well	
F = Spruce Fir	MC = Mixed Conifer	S = Black Spruce	Z = Water			
G = Grass	MD = Mixed Deciduous	T = Tamarack				



Old Road Hardwoods

136.2 Acres
Houghton County, Compartment 33

UNIT	1	2	3	TOTALS
ACRES	61.8	32.8	41.6	136.2
Sawlogs MBF				
Basswood	23.7	6.5	10.6	40.8
Red Maple	6.2	5.5	4.8	16.5
Red Oak	0.0	3.3	8.8	12.1
Sugar Maple	83.0	2.8	15.0	100.8
Yellow Birch	4.9	0.0	2.7	7.6
TOTAL	117.8	18.1	41.9	177.8
Pulpwood Cords				
Balsam Fir	0	0	2	2
Basswood	70	21	22	113
Mixed Aspen	0	25	5	30
Mixed Hardwood	345	178	170	693
TOTAL	415	224	199	838



Legend

- Against State (Red)
- Payment Unit (Red)
- Private Line (Blue)
- ◆ Survey Corners
- == Forest Access Route
- Private

Streams

- Intermittent Stream
- Perennial River

