



# TIMBER SALE MAP

This information provided by authority of Part 525, 1994 PA 451, as amended.

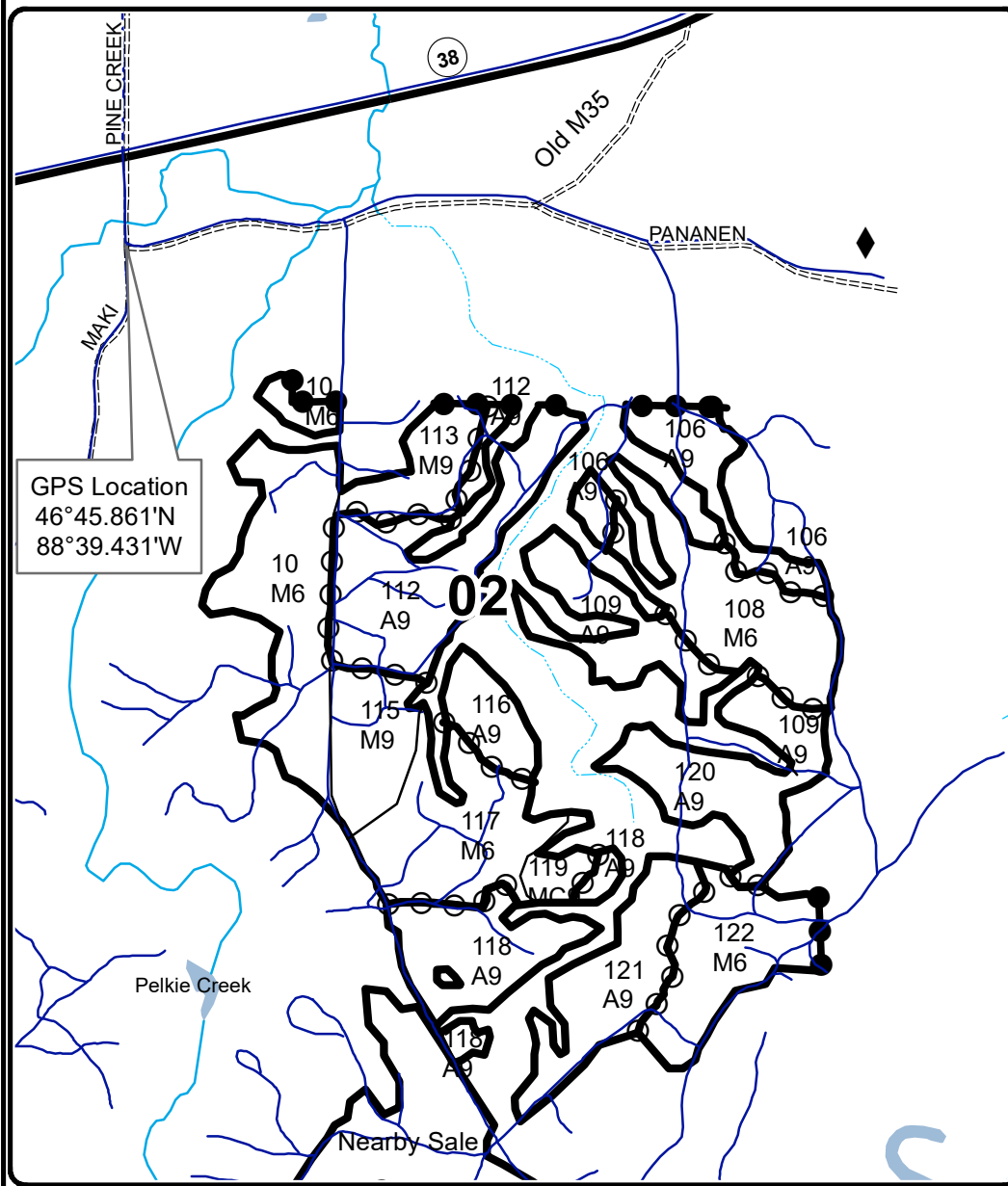
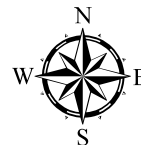
Forest Management Unit Baraga		County Baraga	Mapped By Brodeur	Date 11/04/2020	Page 1	of 1
Township 50N	Range 35W	Section(s) and Subdivision(s) Sec 02; Sec 11 N1/2NE, NENW		Scale 1:15,840		
<b>Cover Type</b>				<b>Density</b>		
A = Aspen	H = Hemlock	N = Marsh	U = Upland Brush	0 = Non Stocked	5 = Pole Timber Medium	
B = Paper Birch	J = Jack Pine	O = Oak	UM = Upland Mixed	1 = Seedling Sapling Poor	6 = Pole Timber Well	
C = Cedar	L = Lowland Brush	P = Lowland Poplar	V = Bog or Marsh	2 = Seedling Sapling Medium	7 = Saw Timber Poor	
D = Treed Bog	LM = Lowland Mixed	Q = Mixed Swamp Conifer	W = White Pine	3 = Seedling Sapling Well	8 = Saw Timber Medium	
E = Swamp Hdwoods	M = Mpl, Bch, Brch	R = Red Pine	X = Non Stocked	4 = Pole Timber Poor	9 = Saw Timber Well	
F = Spruce Fir	MC = Mixed Conifer	S = Black Spruce	Z = Water			
G = Grass	MD = Mixed Deciduous	T = Tamarack				



## GNA2 Thunderbolt

### Compartment 5001 & 5002

272.2 Acres



GPS Location  
46°45.861'N  
88°39.431'W

### Legend

- Ottawa Roads
- Survey Corners
- Highway
- County Road
- Intermittent Stream
- Perennial River
- Lakes and Rivers
- Against State (Orange)
- Payment Unit (Orange)
- Private Line (Orange)

