



TIMBER SALE MAP

This information provided by authority of Part 525, 1994 PA 451, as amended.

Sale Number

11-022-25

Date

07/25/2025

Forest Management Unit

Baraga Mgt Unit

County

Baraga

Mapped By: Dorvinen

Cruised By: Dorvinen, Hansen, Blissick

Scale

1:15,840

Page

1

Of

1

Township

50N

Range

34W

Section(s) and

Subdivision(s) **Sec. 20 W1/2SW; Sec. 29 W1/2NW; Sec. 30 NENW,NE,E1/2SE;**

Cover Type

A = Aspen
B = Paper Birch
C = Cedar
D = Treed Bog
E = Swamp Hardwoods
F = Spruce/Fir
G = Grass
H = Hemlock
J = Jack Pine
K = Rock
L = Lowland Brush
LM = Lowland Mix Forest
M = Maple, Beech, Birch
MC = Mixed Conifer
MD = Mixed Deciduous
N = Marsh
O = Oak
P = Lowland Poplar
Q = Mixed Swamp Conifer
R = Red Pine
S = Black Spruce
T = Tamarack
U = Upland Brush
UM = Upland Mix Forest
V = Bog or Marsh
W = White Pine
X = Non Stocked
Y = Sand
Z = Water

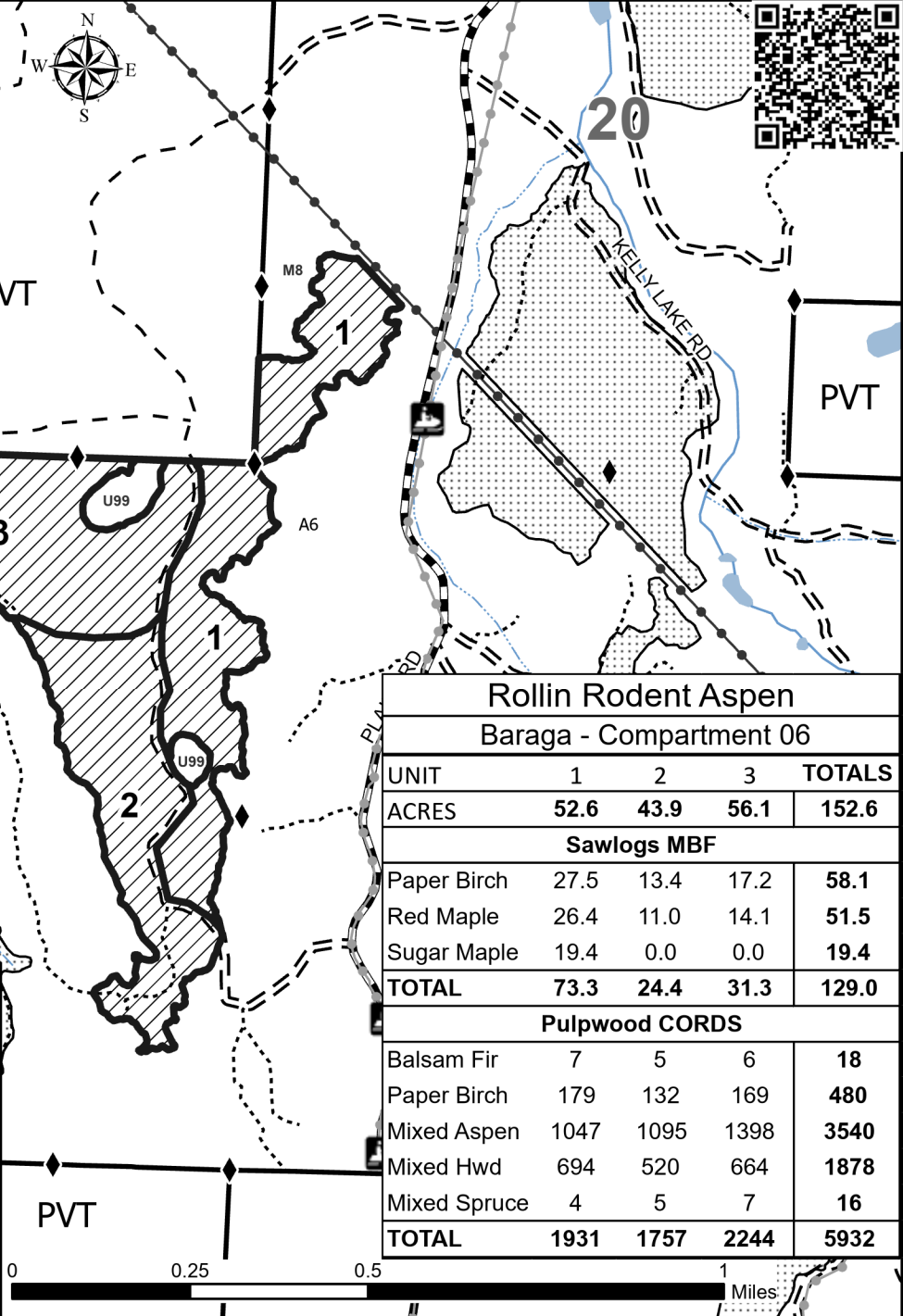
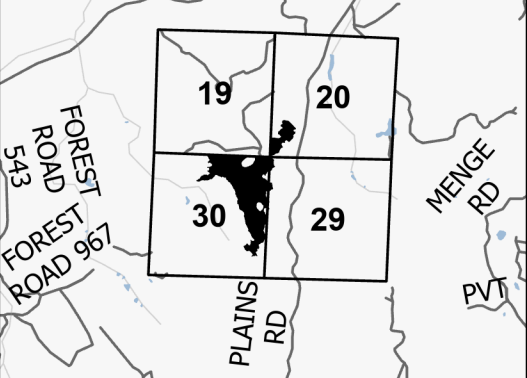
Density

0 = Non Stocked
1 = Seedling Sapling Poor
2 = Seedling Sapling Medium
3 = Seedling Sapling Well
4 = Pole Timber Poor
5 = Pole Timber Medium
6 = Pole Timber Well
7 = Saw Timber Poor
8 = Saw Timber Medium
9 = Saw Timber Well

Legend

- Against State (Red)
- Lakes and Rivers
- Forest Access Route
- Administrative Access Only
- Government Gravel/Dirt
- Private Gravel/Dirt
- Powerline
- Recreational Trails
- Survey Grade Corner
- Nearby Timber Sales
- Clearcut w/ Reserves

Locator Map 1:100,000



Rollin Rodent Aspen

Baraga - Compartment 06

UNIT	1	2	3	TOTALS
ACRES	52.6	43.9	56.1	152.6
Sawlogs MBF				
Paper Birch	27.5	13.4	17.2	58.1
Red Maple	26.4	11.0	14.1	51.5
Sugar Maple	19.4	0.0	0.0	19.4
TOTAL	73.3	24.4	31.3	129.0
Pulpwood CORDS				
Balsam Fir	7	5	6	18
Paper Birch	179	132	169	480
Mixed Aspen	1047	1095	1398	3540
Mixed Hwd	694	520	664	1878
Mixed Spruce	4	5	7	16
TOTAL	1931	1757	2244	5932