



TIMBER SALE MAP

This information provided by authority of Part 525, 1994 PA 451, as amended.

Forest Management Unit Cadillac / Manton		County Missaukee	Mapped By M. Edison	Date 9/24/2021	Page 1	of 1
Township 24N	Range 7W	Section(s) and Subdivision(s) 10 NWNE		Scale 1:15,840		
Cruised By Edison, Tweedale Adamczyk, Krugh, Park						

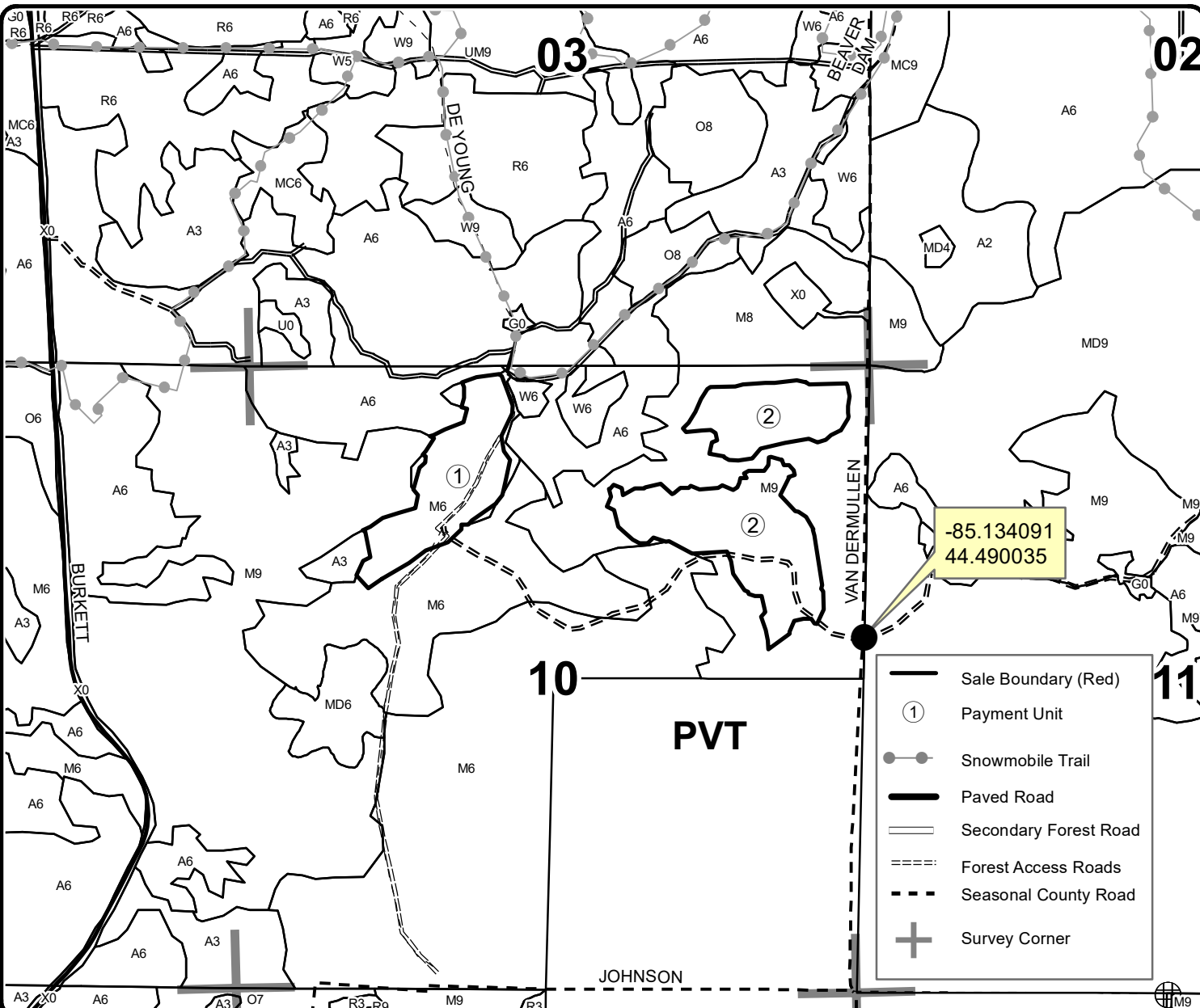
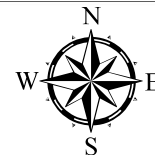
Cover Type			Density		
A = Aspen	H = Hemlock	N = Marsh	U = Upland Brush	0 = Non Stocked	5 = Pole Timber Medium
B = Paper Birch	J = Jack Pine	O = Oak	UM = Upland Mixed	1 = Seedling Sapling Poor	6 = Pole Timber Well
C = Cedar	L = Lowland Brush	P = Lowland Poplar	V = Bog or Marsh	2 = Seedling Sapling Medium	7 = Saw Timber Poor
D = Treed Bog	LM = Lowland Mixed	Q = Mixed Swamp Conifer	W = White Pine	3 = Seedling Sapling Well	8 = Saw Timber Medium
E = Swamp Hdwoods	M = Mpl, Bch, Brch	R = Red Pine	X = Non Stocked	4 = Pole Timber Poor	9 = Saw Timber Well
F = Spruce Fir	MC = Mixed Conifer	S = Black Spruce	Z = Water		
G = Grass	MD = Mixed Deciduous	T = Tamarack			

PU	Acres
1	22.8
2	45

123 East Hardwood

Compartment 123

67.8 Acres



	Sale Boundary (Red)
	Payment Unit
	Snowmobile Trail
	Paved Road
	Secondary Forest Road
	Forest Access Roads
	Seasonal County Road
	Survey Corner

