



TIMBER SALE MAP

This information provided by authority of Part 525, 1994 PA 451, as amended.

Forest Management Unit Cadillac		County Wexford	Mapped By Ventimiglia	Date 07/15/19	Page 1	of 1
Township 24N	Range 09W	Section(s) and Subdivision(s) Section 5 and 6 Various		Scale 1:15,840		
Cruised By Manton Crew						

Cover Type

A = Aspen	H = Hemlock	N = Marsh	U = Upland Brush
B = Paper Birch	J = Jack Pine	O = Oak	UM = Upland Mixed
C = Cedar	L = Lowland Brush	P = Lowland Poplar	V = Bog or Marsh
D = Treed Bog	LM = Lowland Mixed	Q = Mixed Swamp Conifer	W = White Pine
E = Swamp Hdwoods	M = Mpl, Bch, Brch	R = Red Pine	X = Non Stocked
F = Spruce Fir	MC = Mixed Conifer	S = Black Spruce	Z = Water
G = Grass	MD = Mixed Deciduous	T = Tamarack	

Density

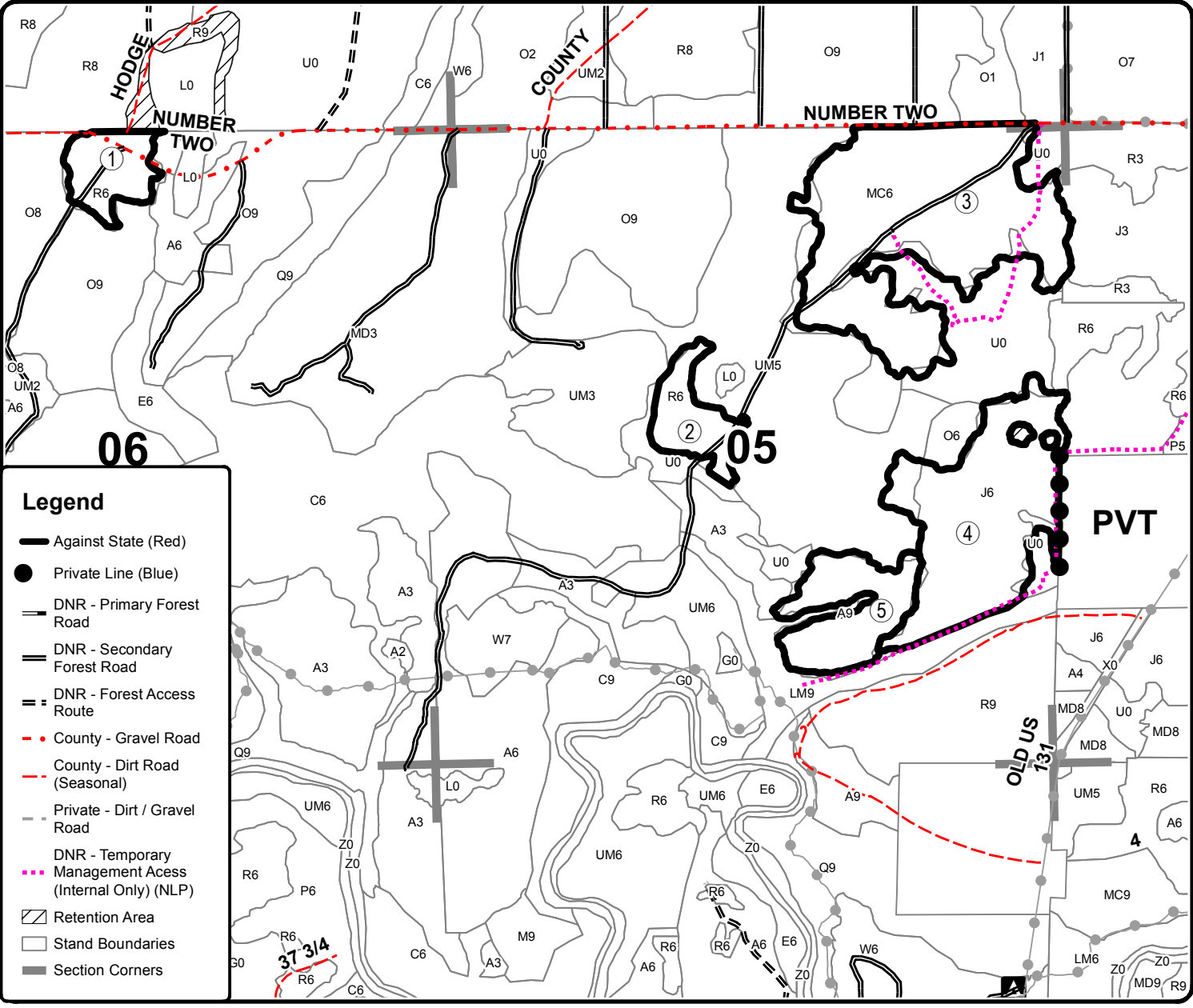
0 = Non Stocked	5 = Pole Timber Medium
1 = Seedling Sapling Poor	6 = Pole Timber Well
2 = Seedling Sapling Medium	7 = Saw Timber Poor
3 = Seedling Sapling Well	8 = Saw Timber Medium
4 = Pole Timber Poor	9 = Saw Timber Well

PU	Acres	PU	Acres
1	10.8	4	46.9
2	10.7	5	19.6
3	72.7		

Barrens Pine

Compartment 127

160.7 Acres



Legend

- Against State (Red)
- Private Line (Blue)
- DNR - Primary Forest Road
- DNR - Secondary Forest Road
- DNR - Forest Access Route
- County - Gravel Road
- County - Dirt Road (Seasonal)
- Private - Dirt / Gravel Road
- DNR - Temporary Management Access (Internal Only) (NLP)
- Retention Area
- Stand Boundaries
- Section Corners

