



# TIMBER SALE MAP

This information provided by authority of Part 525, 1994 PA 451, as amended.

Forest Management Unit <b>Cadillac</b>		County <b>Wexford</b>	Mapped By <b>Ventimiglia</b>	Date <b>07/26/19</b>	Page <b>2</b>	of <b>2</b>
Township <b>24N</b>	Range <b>09W</b>	Section(s) and Subdivision(s) <b>Section 1, 6 and 7</b>			Scale <b>1:15,840</b>	
Cruised By <b>Ventimiglia/Peterson/Jordan</b>						

### Cover Type

A = Aspen	H = Hemlock	N = Marsh	U = Upland Brush
B = Paper Birch	J = Jack Pine	O = Oak	UM = Upland Mixed
C = Cedar	L = Lowland Brush	P = Lowland Poplar	V = Bog or Marsh
D = Treed Bog	LM = Lowland Mixed	Q = Mixed Swamp Conifer	W = White Pine
E = Swamp Hdwoods	M = Mpl, Bch, Brch	R = Red Pine	X = Non Stocked
F = Spruce Fir	MC = Mixed Conifer	S = Black Spruce	Z = Water
G = Grass	MD = Mixed Deciduous	T = Tamarack	

### Density

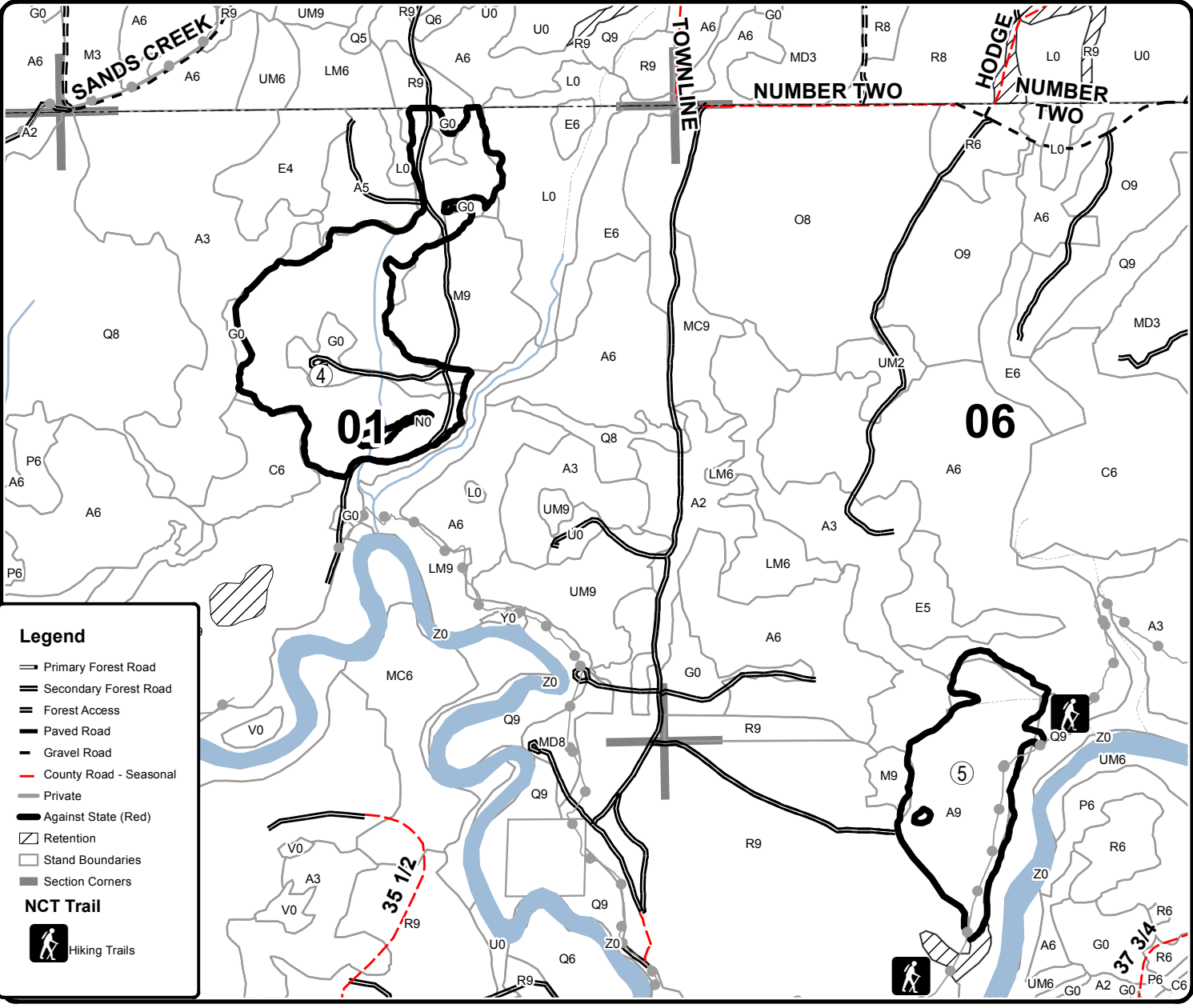
0 = Non Stocked	5 = Pole Timber Medium
1 = Seedling Sapling Poor	6 = Pole Timber Well
2 = Seedling Sapling Medium	7 = Saw Timber Poor
3 = Seedling Sapling Well	8 = Saw Timber Medium
4 = Pole Timber Poor	9 = Saw Timber Well

PU	Acres
<b>4</b>	<b>73.4</b>
<b>5</b>	<b>38.6</b>

## County Line Aspen

### Compartment 127

### 179.1 Acres



#### Legend

- Primary Forest Road
- Secondary Forest Road
- Forest Access
- Paved Road
- Gravel Road
- County Road - Seasonal
- Private
- Against State (Red)
- Retention
- Stand Boundaries
- Section Corners

#### NCT Trail

- Hiking Trails

