



TIMBER SALE MAP

This information provided by authority of Part 525, 1994 PA 451, as amended.

| | | | | | |
|--------------------------|---------|-------------------------------|------------|------|----|
| Forest Management Unit | County | Mapped By | Date | Page | of |
| Cadillac Management Unit | Newaygo | Krugh | 08/11/2022 | 2 | 2 |
| Township | Range | Section(s) and Subdivision(s) | Scale | | |
| 13N | 11W | S1/2NE | 1:15,840 | | |

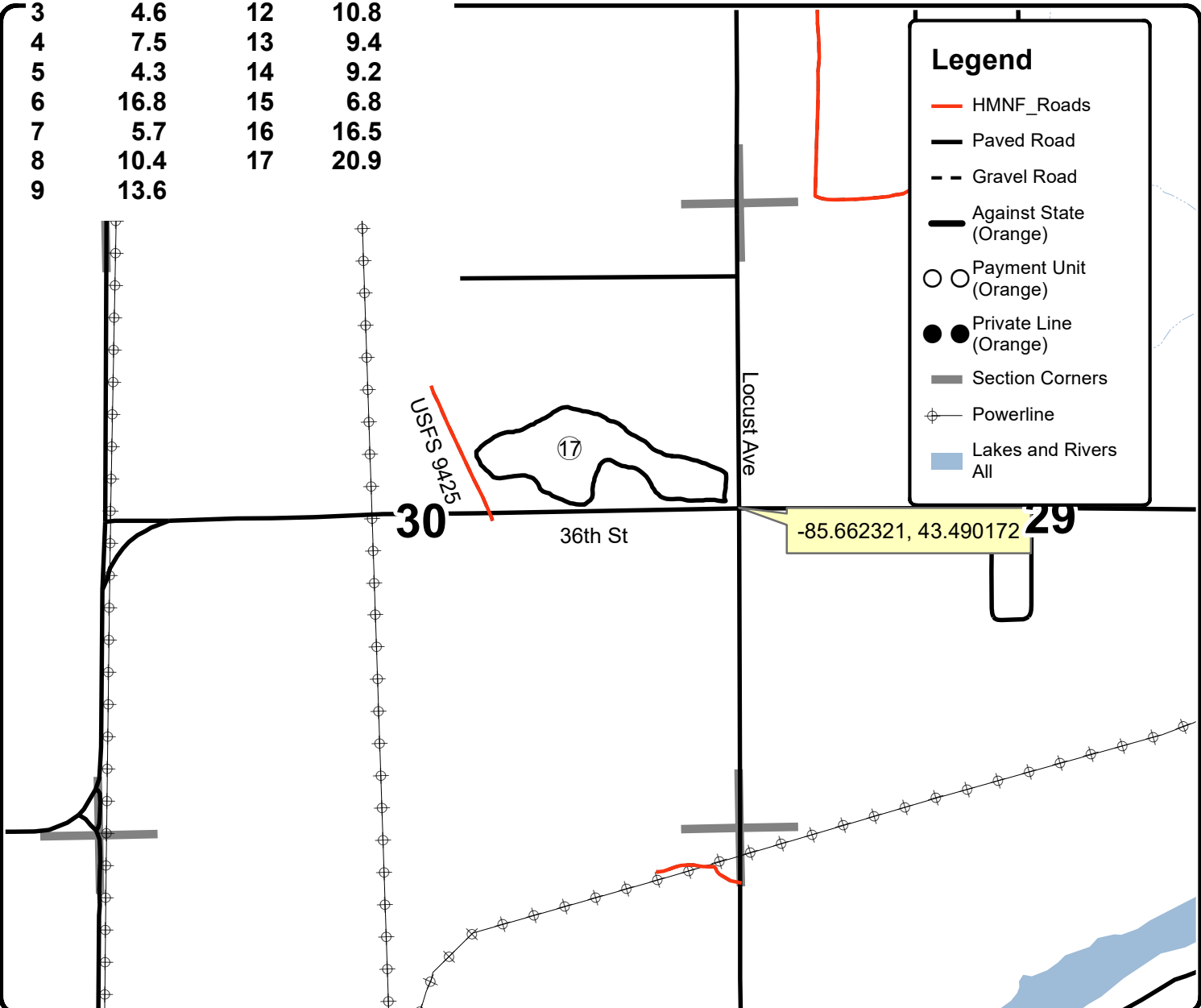
| Cover Type | | | | Density | |
|-------------------|----------------------|-------------------------|-------------------|-----------------------------|------------------------|
| A = Aspen | H = Hemlock | N = Marsh | U = Upland Brush | 0 = Non Stocked | 5 = Pole Timber Medium |
| B = Paper Birch | J = Jack Pine | O = Oak | UM = Upland Mixed | 1 = Seedling Sapling Poor | 6 = Pole Timber Well |
| C = Cedar | L = Lowland Brush | P = Lowland Poplar | V = Bog or Marsh | 2 = Seedling Sapling Medium | 7 = Saw Timber Poor |
| D = Treed Bog | LM = Lowland Mixed | Q = Mixed Swamp Conifer | W = White Pine | 3 = Seedling Sapling Well | 8 = Saw Timber Medium |
| E = Swamp Hdwoods | M = Mpl, Bch, Brch | R = Red Pine | X = Non Stocked | 4 = Pole Timber Poor | 9 = Saw Timber Well |
| F = Spruce Fir | MC = Mixed Conifer | S = Black Spruce | Z = Water | | |
| G = Grass | MD = Mixed Deciduous | T = Tamarack | | | |

| PU | Acres | PU | Acres |
|----|-------|----|-------|
| 1 | 14.4 | 10 | 15.4 |
| 2 | 3.5 | 11 | 12.1 |
| 3 | 4.6 | 12 | 10.8 |
| 4 | 7.5 | 13 | 9.4 |
| 5 | 4.3 | 14 | 9.2 |
| 6 | 16.8 | 15 | 6.8 |
| 7 | 5.7 | 16 | 16.5 |
| 8 | 10.4 | 17 | 20.9 |
| 9 | 13.6 | | |

GNA2 Praire Pine

Compartment 7921519 & 7921572

181.9 Acres



Legend

- HMNF_Roads
- Paved Road
- Gravel Road
- Against State (Orange)
- Payment Unit (Orange)
- Private Line (Orange)
- Section Corners
- ⊕ Powerline
- Lakes and Rivers All

