



TIMBER SALE MAP

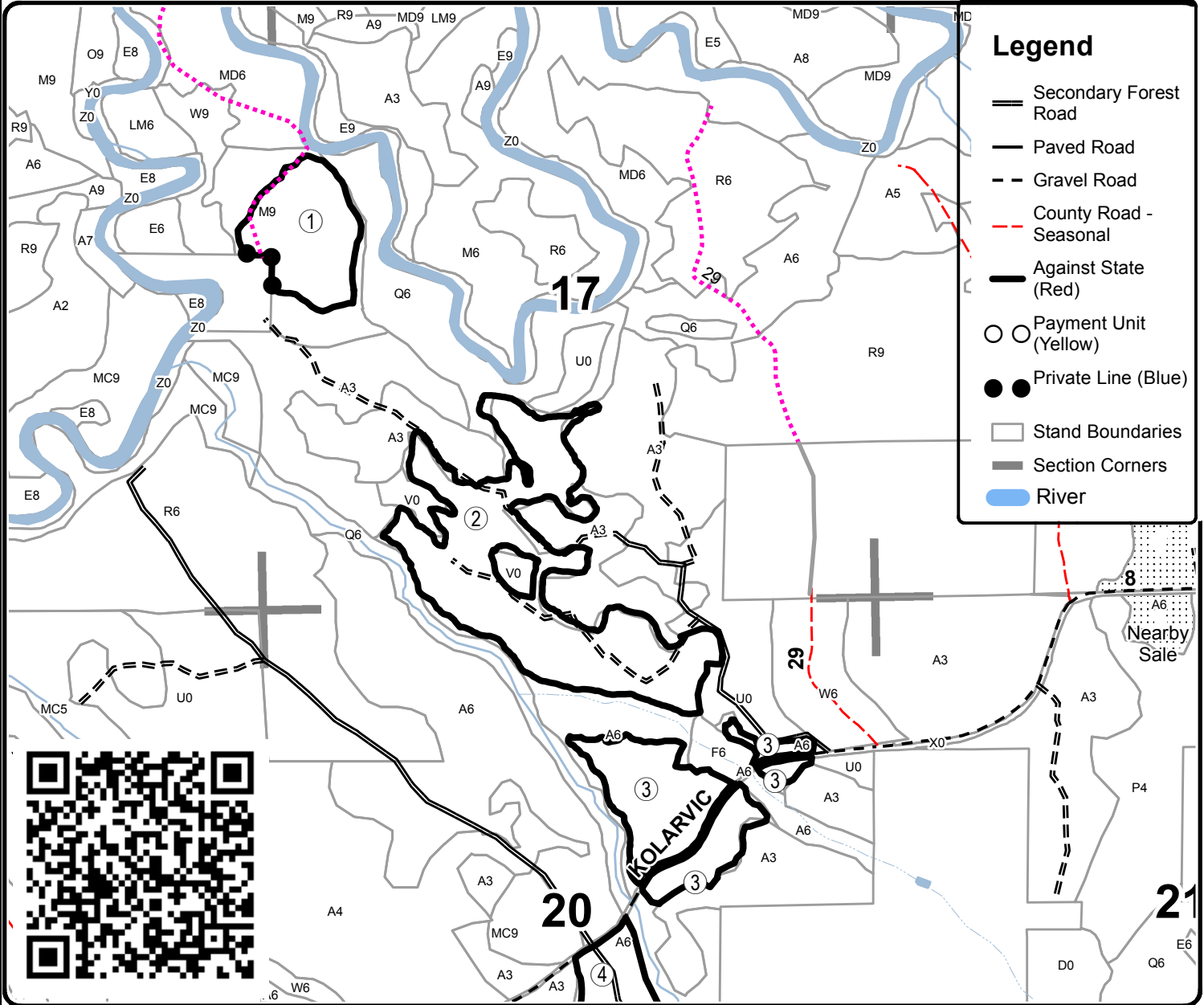
This information provided by authority of Part 525, 1994 PA 451, as amended.

Forest Management Unit Cadillac		County Wexford	Mapped By B. Tweedale	Date 8/16/2019	Page 1	of 2
Township 24N	Range 10W	Section(s) and Subdivision(s) Sec. 17 SWNW, SW, W1/2SE Sec. 18 SENE Sec. 19 SWSW Sec. 20 NENW, NE, W1/2SE Sec. 30 NWNW		Scale 1:15,840		

Cover Type				Density			
A = Aspen	H = Hemlock	N = Marsh	U = Upland Brush	0 = Non Stocked	5 = Pole Timber Medium		
B = Paper Birch	J = Jack Pine	O = Oak	UM = Upland Mixed	1 = Seedling Sapling Poor	6 = Pole Timber Well		
C = Cedar	L = Lowland Brush	P = Lowland Poplar	V = Bog or Marsh	2 = Seedling Sapling Medium	7 = Saw Timber Poor		
D = Treed Bog	LM = Lowland Mixed	Q = Mixed Swamp Conifer	W = White Pine	3 = Seedling Sapling Well	8 = Saw Timber Medium		
E = Swamp Hdwoods	M = Mpl, Bch, Brch	R = Red Pine	X = Non Stocked	4 = Pole Timber Poor	9 = Saw Timber Well		
F = Spruce Fir	MC = Mixed Conifer	S = Black Spruce	Z = Water				
G = Grass	MD = Mixed Deciduous	T = Tamarack					

PU	Acres	PU	Acres
1	21	4	41.4
2	64.1	5	13.4
3	31.2		

Off The Grid Mix
Compartment 134
171.1 Acres



Legend

- Secondary Forest Road (thin solid line)
- Paved Road (thick solid line)
- Gravel Road (dashed line)
- County Road - Seasonal (dashed line with red dashes)
- Against State (Red) (thick solid black line)
- Payment Unit (Yellow) (circle with yellow fill)
- Private Line (Blue) (circle with blue fill)
- Stand Boundaries (thin solid line)
- Section Corners (dotted line)
- River (blue shaded area)

