



# TIMBER SALE MAP

This information provided by authority of Part 525, 1994 PA 451, as amended.

Forest Management Unit <b>Cadillac</b>		County <b>Wexford</b>	Mapped By <b>Ventimiglia</b>	Date <b>07/08/22</b>	Page <b>2</b>	of <b>2</b>
Township <b>24N</b>	Range <b>10W</b>	Section(s) and Subdivision(s) <b>Sections 10,11 and 12</b>		Scale <b>1:15,840</b>		

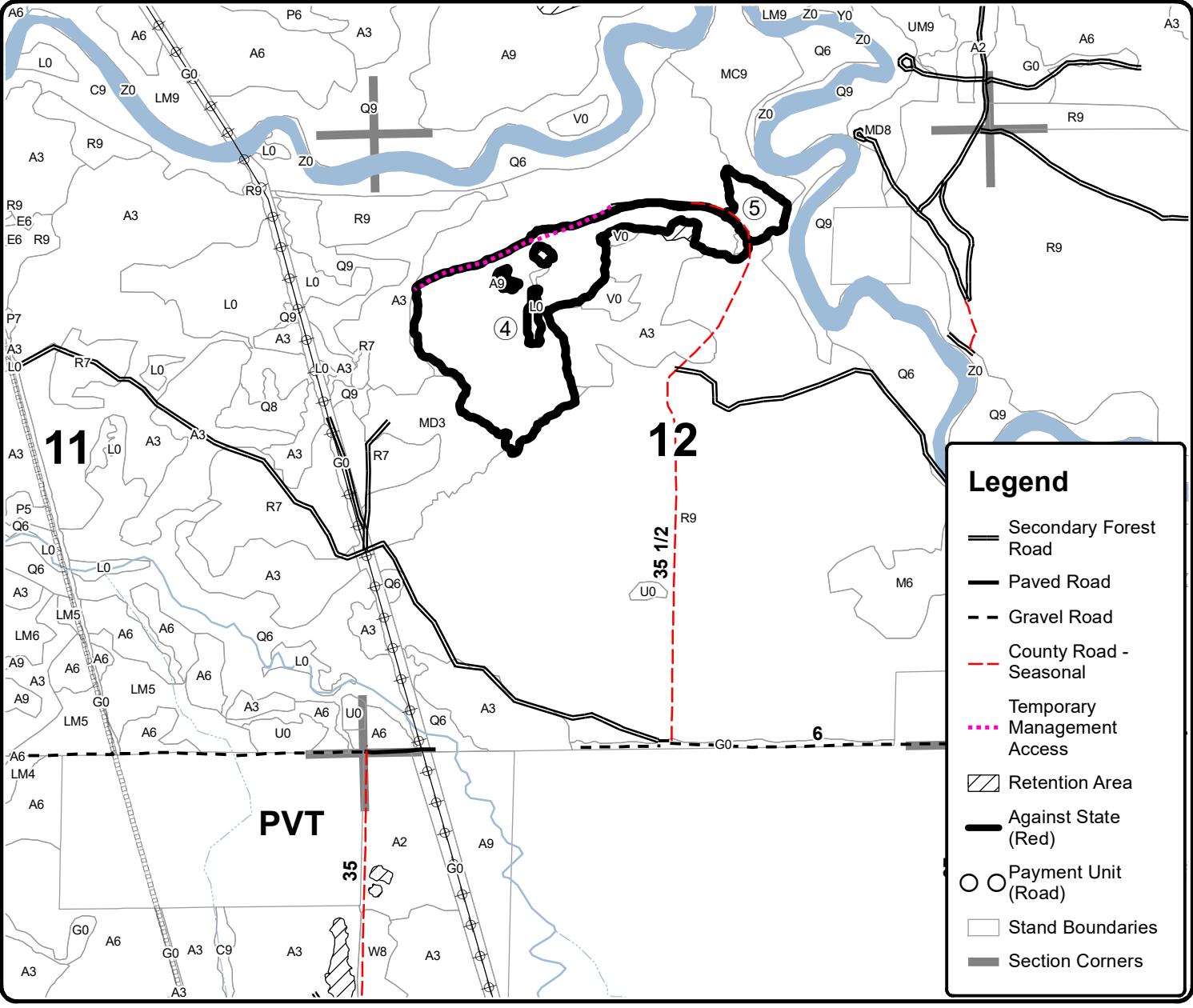
Cover Type				Density	
A = Aspen	H = Hemlock	N = Marsh	U = Upland Brush	0 = Non Stocked	5 = Pole Timber Medium
B = Paper Birch	J = Jack Pine	O = Oak	UM = Upland Mixed	1 = Seedling Sapling Poor	6 = Pole Timber Well
C = Cedar	L = Lowland Brush	P = Lowland Poplar	V = Bog or Marsh	2 = Seedling Sapling Medium	7 = Saw Timber Poor
D = Treed Bog	LM = Lowland Mixed	Q = Mixed Swamp Conifer	W = White Pine	3 = Seedling Sapling Well	8 = Saw Timber Medium
E = Swamp Hdwoods	M = Mpl, Bch, Brch	R = Red Pine	X = Non Stocked	4 = Pole Timber Poor	9 = Saw Timber Well
F = Spruce Fir	MC = Mixed Conifer	S = Black Spruce	Z = Water		
G = Grass	MD = Mixed Deciduous	T = Tamarack			

PU	Acres	PU	Acres
<b>1</b>	<b>9.1</b>	<b>4</b>	<b>48</b>
<b>2</b>	<b>21</b>	<b>5</b>	<b>4.6</b>
<b>3</b>	<b>27</b>		

## Southside Aspen

### Compartment 150

**109.7 Acres**



### Legend

- Secondary Forest Road
- Paved Road
- Gravel Road
- County Road - Seasonal
- Temporary Management Access
- Retention Area
- Against State (Red)
- Payment Unit (Road)
- Stand Boundaries
- Section Corners

