



TIMBER SALE MAP

This information provided by authority of Part 525, 1994 PA 451, as amended.

| | | |
|-------------|------------|----|
| Sale Number | Date | |
| 12-003-23 | 08/23/2023 | |
| Scale | Page | Of |
| 1:24,000 | 2 | 2 |

| | | |
|------------------------|-----------|-------------------------|
| Forest Management Unit | County | Mapped By: Jacob Siler |
| Escanaba Mgt Unit | Dickinson | Cruised By: Jacob Siler |

| | | |
|----------|-------|---|
| Township | Range | Section(s) and Subdivision(s) |
| 44N | 29W | W1/2SW S3, E1/2NW,NWNE,S1/2NE, E1/2SW,SE S4, E1/2SE S5, NENW,N1/2NE,SWNE S9, NW,NE,E1/2SW,N1/2SE,SESE S10 |

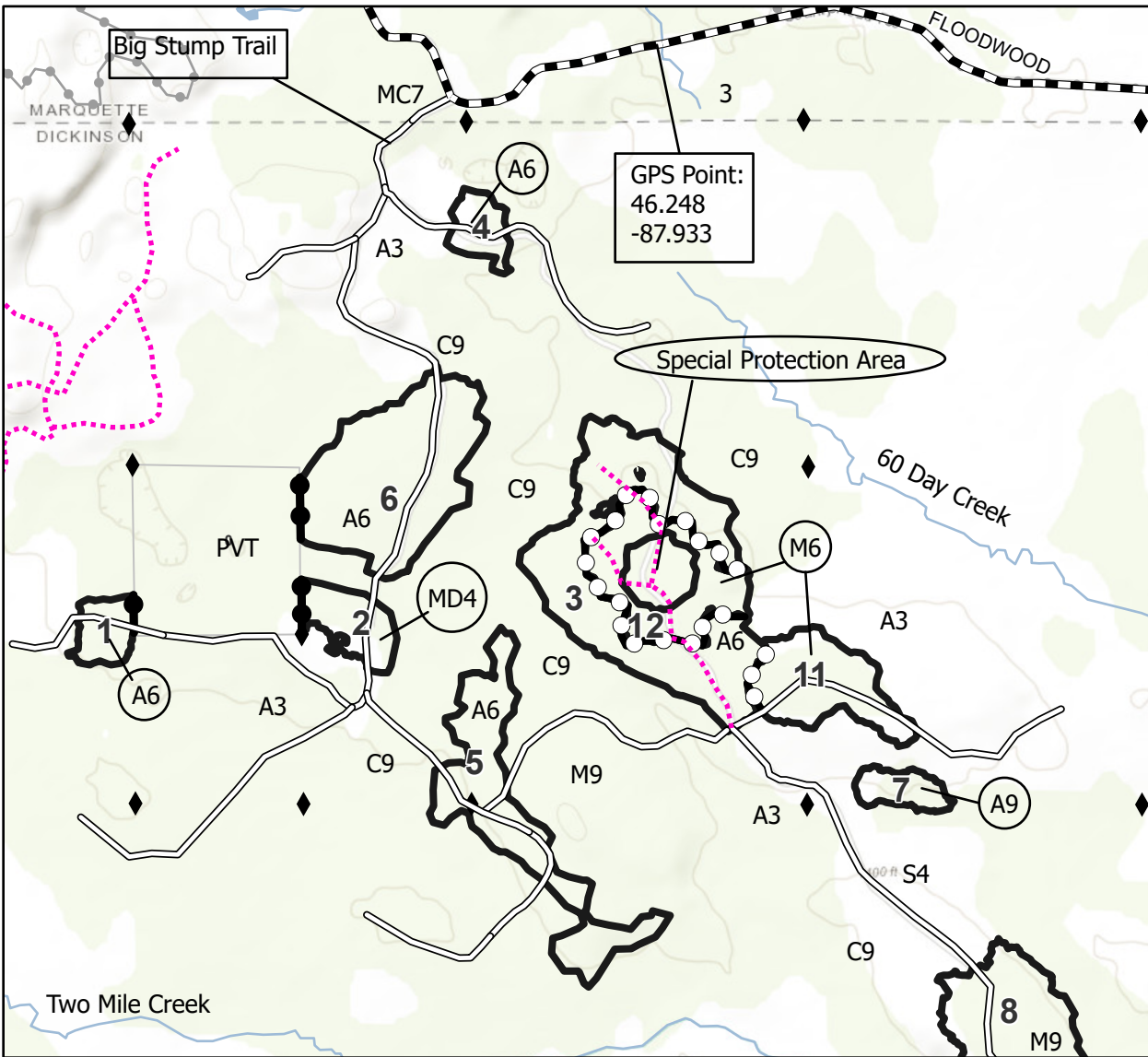
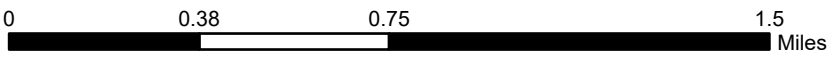
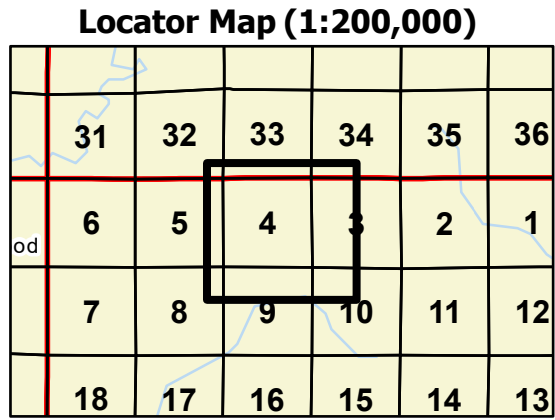
| Cover Type | | | |
|---------------------|-------------------------|-------------------------|------------------------|
| A = Aspen | J = Jack Pine | O = Oak | U = Upland Brush |
| B = Paper Birch | K = Rock | P = Lowland Poplar | UM = Upland Mix Forest |
| C = Cedar | L = Lowland Brush | Q = Mixed Swamp Conifer | V = Bog or Marsh |
| D = Treed Bog | LM = Lowland Mix Forest | R = Red Pine | W = White Pine |
| E = Swamp Hardwoods | M = Maple, Beech, Birch | S = Black Spruce | X = Non Stocked |
| F = Spruce/Fir | MC = Mixed Conifer | T = Tamarack | Y = Sand |
| G = Grass | MD = Mixed Deciduous | Z = Water | |
| H = Hemlock | N = Marsh | | |

| Density | |
|-----------------------------|------------------------|
| 0 = Non Stocked | 5 = Pole Timber Medium |
| 1 = Seedling Sapling Poor | 6 = Pole Timber Well |
| 2 = Seedling Sapling Medium | 7 = Saw Timber Poor |
| 3 = Seedling Sapling Well | 8 = Saw Timber Medium |
| 4 = Pole Timber Poor | 9 = Saw Timber Well |

| PU # | Acres | PU # | Acres | PU # | Acres |
|------|-------|------|-------|------|-------|
| 1 | 4.8 | 5 | 24.3 | 9 | 65.5 |
| 2 | 7.4 | 6 | 33.5 | 10 | 23 |
| 3 | 39.1 | 7 | 4.2 | 11 | 14.9 |
| 4 | 4.7 | 8 | 52.2 | 12 | 15.2 |

Big Stump Mix

Compartment 8
Acres: 288.8



| Legend | |
|--------|---------------------------|
| | Sale Boundary - Red Paint |
| | Payment Unit (Yellow) |
| | Private Line (Blue) |
| | Recreational Trail |
| | Poor Dirt Road |
| | Closed Road |
| | Survey Grade Corner |
| | County Road |
| | Intermittent Stream |
| | Lakes and Rivers |
| | State Boundary |

Use QR Code to open Map in App

