



TIMBER SALE MAP

This information provided by authority of Part 525, 1994 PA 451, as amended.

Sale Number 12-801-24	Date 04/17/2024	
Scale 1:24,000	Page 1	Of 1

Forest Management Unit Crystal Falls Mgt Unit	County Iron	Mapped By: Tyler Ritchie
		Cruised By: Tyler Ritchie

Township 44N	Range 36W	Section(s) and Subdivision(s) Sec. 2 SESW,S1/2SE; Sec. 10 NENE; Sec. 11 NW,W1/2NE,SW,SE; Sec. 14 NW,N1/2NE,N1/2SW; Sec. 15 E1/2NE,NESE;		
------------------------	---------------------	---	--	--

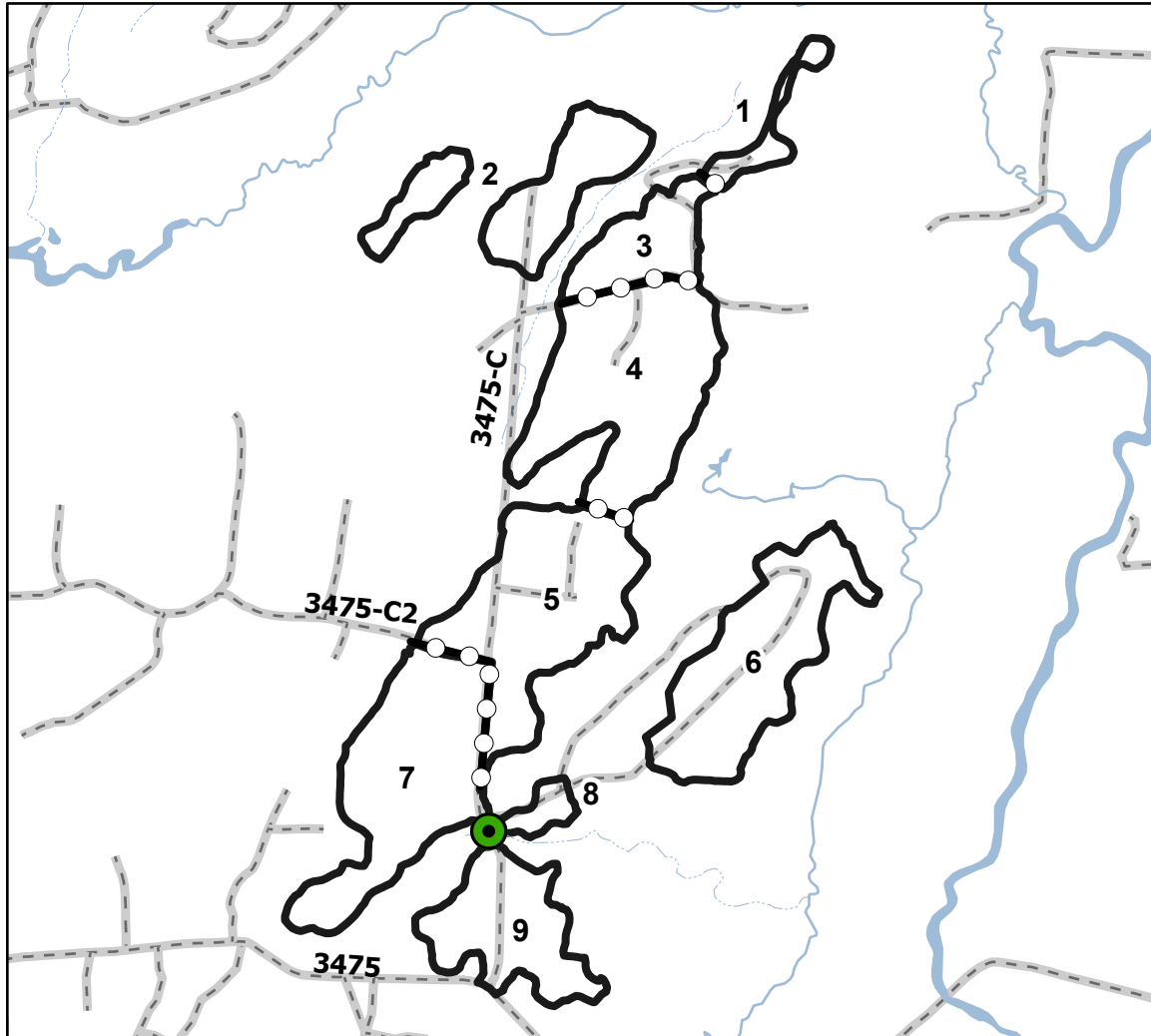
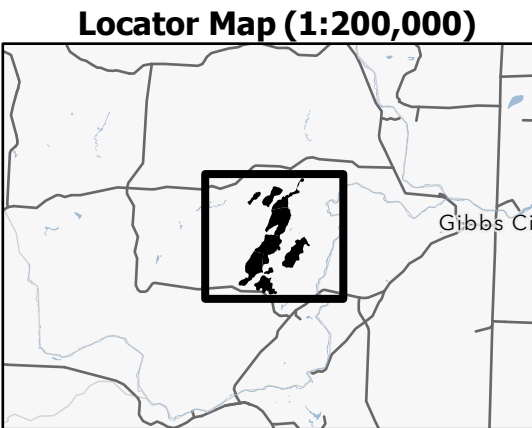
Cover Type			
A = Aspen	J = Jack Pine	O = Oak	U = Upland Brush
B = Paper Birch	K = Rock	P = Lowland Poplar	UM = Upland Mix Forest
C = Cedar	L = Lowland Brush	Q = Mixed Swamp Conifer	V = Bog or Marsh
D = Treed Bog	LM = Lowland Mix Forest	R = Red Pine	W = White Pine
E = Swamp Hardwoods	M = Maple, Beech, Birch	S = Black Spruce	X = Non Stocked
F = Spruce/Fir	MC = Mixed Conifer	T = Tamarack	Y = Sand
G = Grass	MD = Mixed Deciduous	Z = Water	
H = Hemlock	N = Marsh		

Density	
0 = Non Stocked	5 = Pole Timber Medium
1 = Seedling Sapling Poor	6 = Pole Timber Well
2 = Seedling Sapling Medium	7 = Saw Timber Poor
3 = Seedling Sapling Well	8 = Saw Timber Medium
4 = Pole Timber Poor	9 = Saw Timber Well

PU #	Acres	PU #	Acres
1	8.9	6	62.4
2	40.8	7	70.7
3	24.9	8	6.2
4	77.7	9	39.7
5	71.3		

GNA2 East Swinger

402.5 Acres



Legend	
	Against USFS (Triple Orange)
	Payment Unit (Double Orange)
	USFS Roads
	Intermittent Stream
	Perennial River
	Lakes and Rivers
	Culvert

Map Note:
 Pay close attention to Operating Season restrictions in specs. Cross drain culverts will be required along 3475-C at designated locations. There are several existing pipes to replace and additional cross drains required. A larger culvert will be required at the designated location on the map along with gravel and proper installation materials. See specs. Gravel will be required for entrances onto 3475.

Use QR Code to open Map in App

