



### TIMBER SALE MAP

This information provided by authority of Part 525, 1994 PA 451, as amended.

Sale Number <b>12-800-24</b>	Date <b>01/16/2024</b>	
Scale <b>1:31,680</b>	Page <b>1</b>	Of <b>1</b>

Forest Management Unit <b>Crystal Falls Mgt Unit</b>	County <b>Iron</b>	Mapped By: <b>Tyler Ritchie</b>
		Cruised By: <b>Tyler Ritchie</b>

Township **44N / 45N** Range **36W /** Section(s) and Subdivision(s) **34 SENE,SE; Sec. 35 NW,NE,SW,NWSE; Sec. 36 N1/2NW,SWNW,N1/2NE,SENE,NESE; Sec. 2 NWNW; Sec. 25 S1/2SW,S1/2SE; Sec. 26 SESW,S1/2SE; Sec. 3 NENE; Sec. 31 SWNW; Sec.**

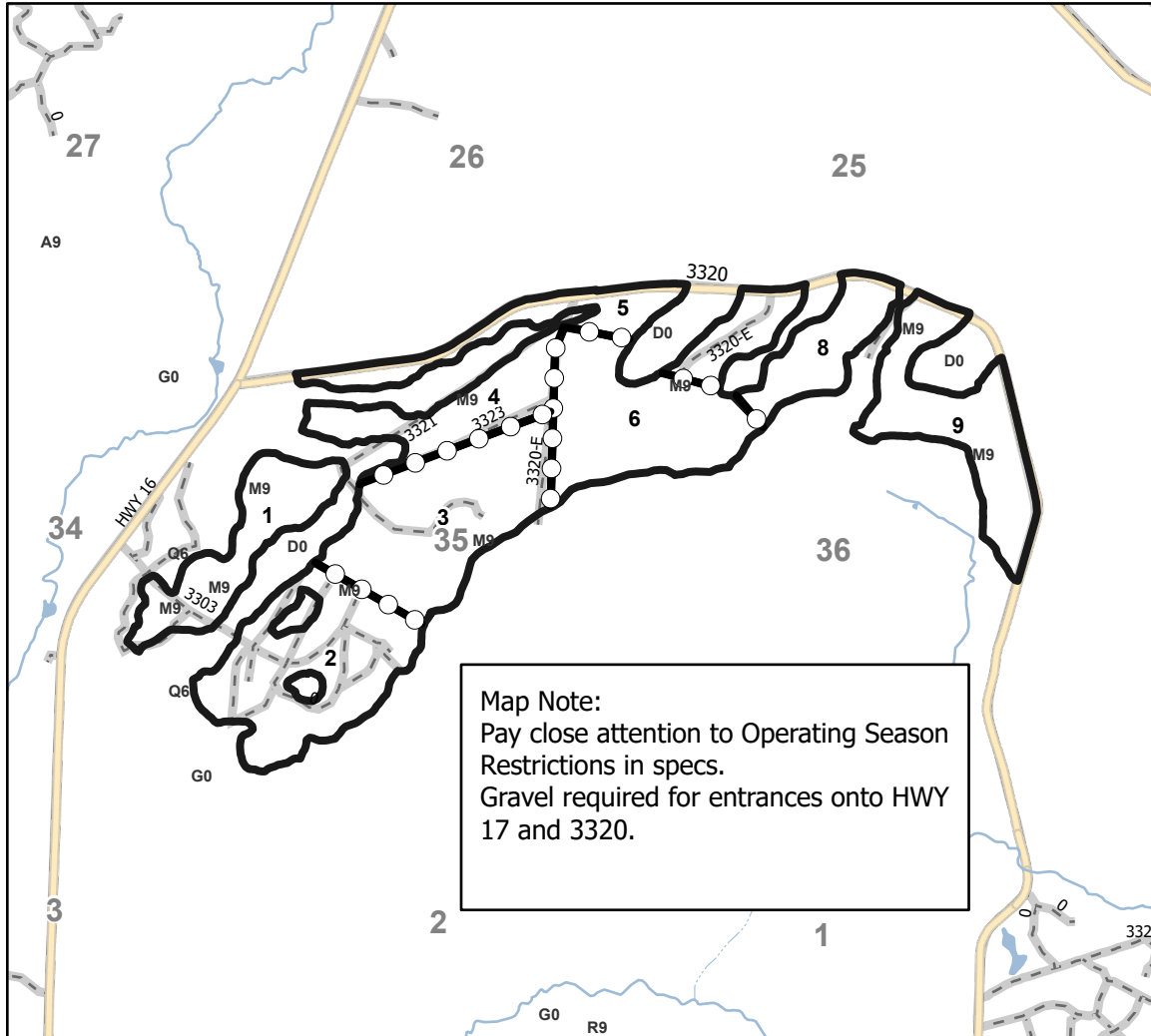
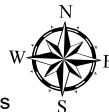
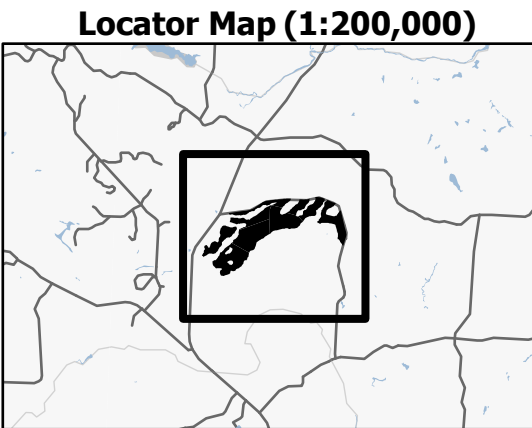
Cover Type			
A = Aspen	J = Jack Pine	O = Oak	U = Upland Brush
B = Paper Birch	K = Rock	P = Lowland Poplar	UM = Upland Mix Forest
C = Cedar	L = Lowland Brush	Q = Mixed Swamp Conifer	V = Bog or Marsh
D = Treed Bog	LM = Lowland Mix Forest	R = Red Pine	W = White Pine
E = Swamp Hardwoods	M = Maple, Beech, Birch	S = Black Spruce	X = Non Stocked
F = Spruce/Fir	MC = Mixed Conifer	T = Tamarack	Y = Sand
G = Grass	MD = Mixed Deciduous		Z = Water
H = Hemlock	N = Marsh		

Density	
0 = Non Stocked	5 = Pole Timber Medium
1 = Seedling Sapling Poor	6 = Pole Timber Well
2 = Seedling Sapling Medium	7 = Saw Timber Poor
3 = Seedling Sapling Well	8 = Saw Timber Medium
4 = Pole Timber Poor	9 = Saw Timber Well

PU #	Acres	PU #	Acres
1	59.4	6	93.9
2	109.4	7	26.4
3	114.4	8	42.1
4	56.2	9	80.1
5	41.8		

## GNA2 Northwestern

**623.7 Acres**



**Map Note:**  
 Pay close attention to Operating Season Restrictions in specs.  
 Gravel required for entrances onto HWY 17 and 3320.

Legend	
	Against USFS (Triple Orange)
	Payment Unit (Double Orange)
	Intermittent Stream
	Perennial River
	USFS Roads

Use QR Code to open Map in App

