



TIMBER SALE MAP

This information provided by authority of Part 525, 1994 PA 451, as amended.

Sale Number	Year
12-015-20	2022

Forest Management Unit	County	Mapped By	Date	Page	of
Crystal Falls Management Unit	Dickinson Co.	Debbie Goupell	9/2/2022	1	2
		Cruised By			
		Dickie Goupell			

Township	Range	Section(s) and Subdivision(s)	Scale
43N	28W	Sec 21: N1/2SE, SESE, NWSW Sec 28: N1/2NW, NWNW, SENW, SWNE, SW1/4, SWSE Sec 33: NWNE	1:15,840

Cover Type

A = Aspen	H = Hemlock	N = Marsh	U = Upland Brush
B = Paper Birch	J = Jack Pine	O = Oak	UM = Upland Mixed
C = Cedar	L = Lowland Brush	P = Lowland Poplar	V = Bog or Marsh
D = Treed Bog	LM = Lowland Mixed	Q = Mixed Swamp Conifer	W = White Pine
E = Swamp Hdwoods	M = Mpl, Bch, Brch	R = Red Pine	X = Non Stocked
F = Spruce Fir	MC = Mixed Conifer	S = Black Spruce	Z = Water
G = Grass	MD = Mixed Deciduous	T = Tamarack	

Density

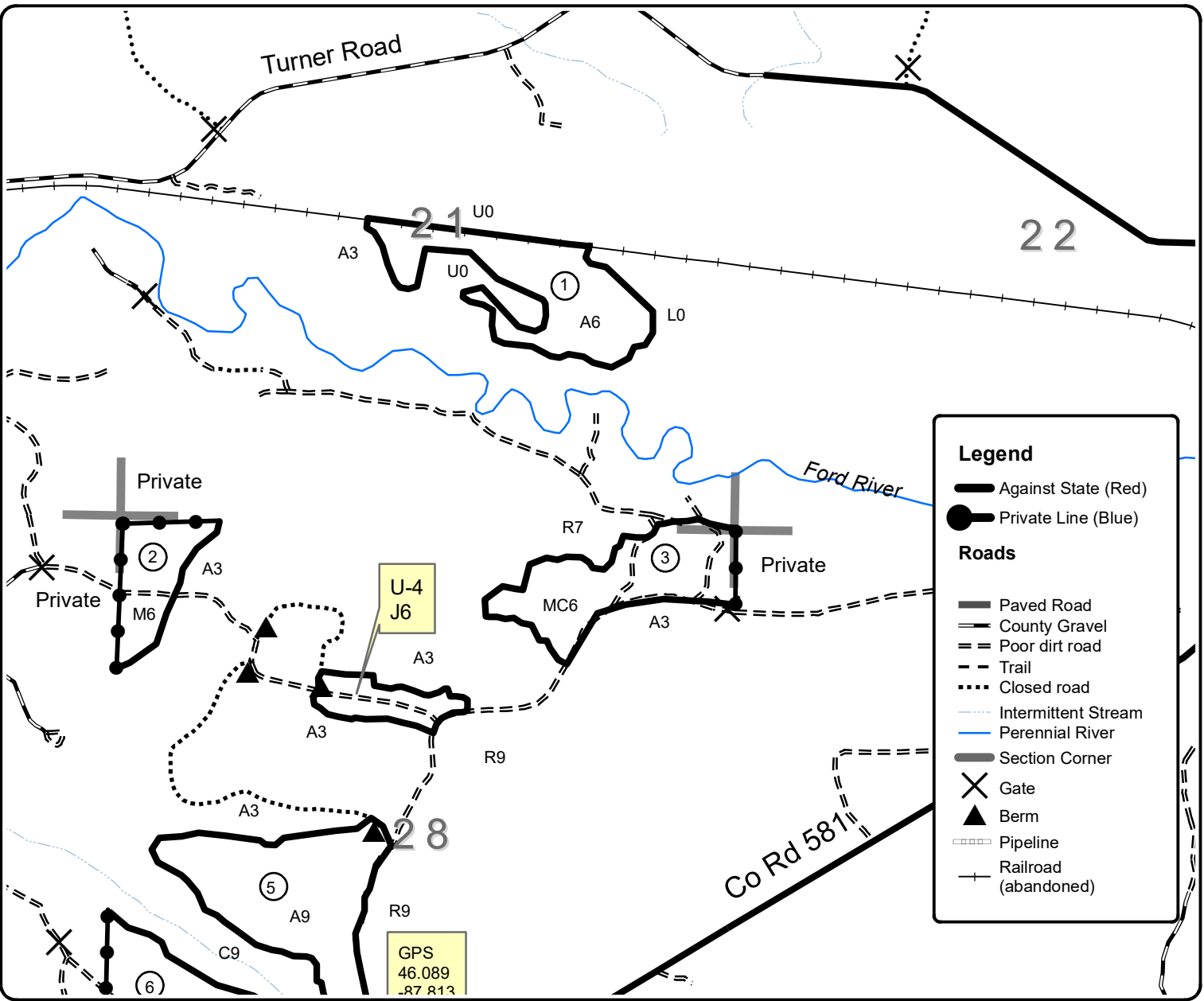
0 = Non Stocked	5 = Pole Timber Medium
1 = Seedling Sapling Poor	6 = Pole Timber Well
2 = Seedling Sapling Medium	7 = Saw Timber Poor
3 = Seedling Sapling Well	8 = Saw Timber Medium
4 = Pole Timber Poor	9 = Saw Timber Well

PU	Acres	PU	Acres
1	31.2	5	40.4
2	13.8	6	70.7
3	28.1	7	21.9
4	8.8		

Pipeline Post

Compartment 37

Acres 214.9



Legend

- Against State (Red)
- Private Line (Blue)

Roads

- Paved Road
- County Gravel
- == Poor dirt road
- - - Trail
- ⋯ Closed road
- ⋯ Intermittent Stream
- Perennial River
- Section Corner
- X Gate
- ▲ Berm
- Pipeline
- Railroad (abandoned)

GPS
46.089
-87.813

