



TIMBER SALE MAP

This information provided by authority of Part 525, 1994 PA 451, as amended.

Sale Number	Year
33-038	17

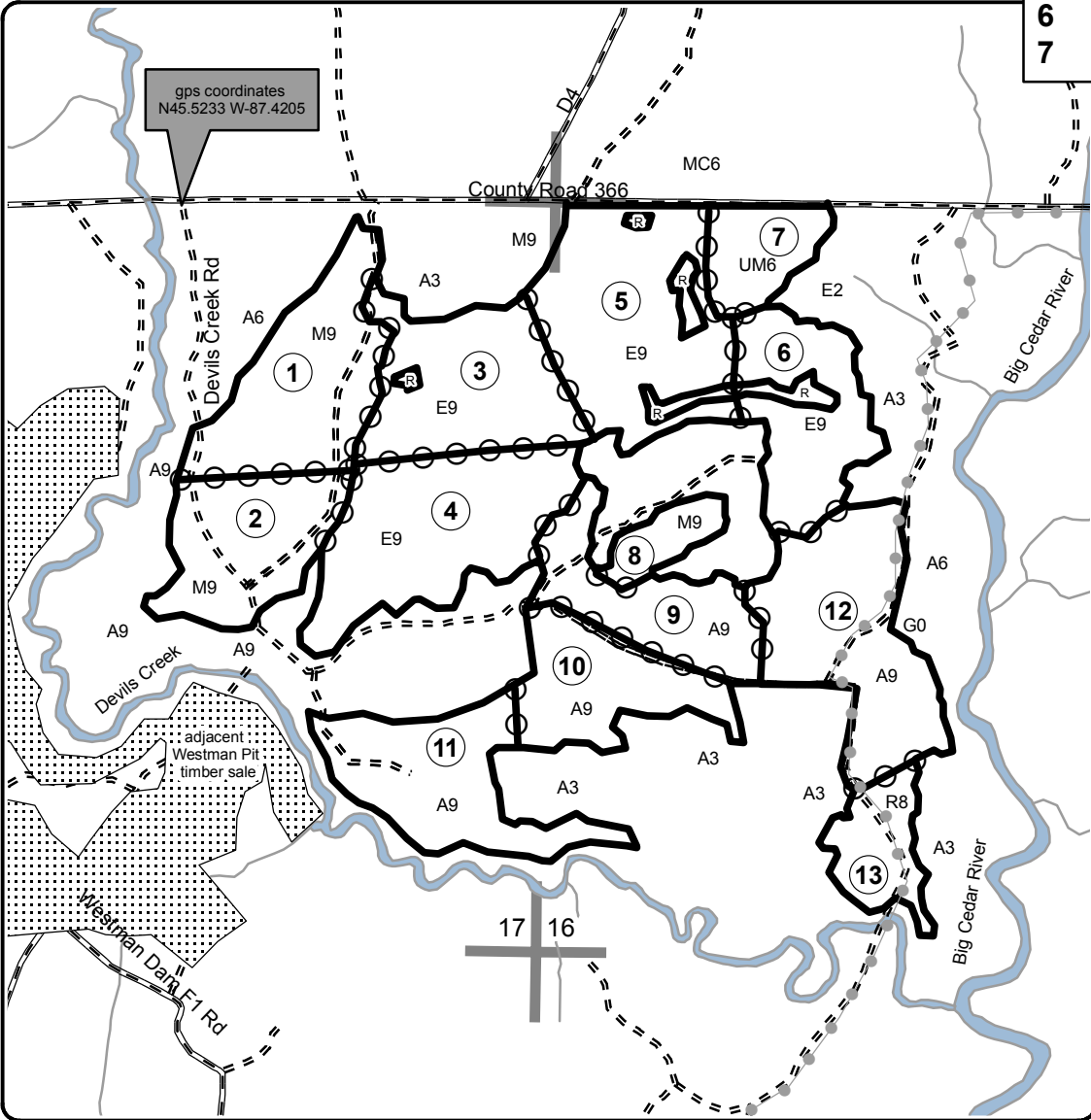
Forest Management Unit Escanaba Management Unit	County Menominee County	Mapped By Beaudou	Date 7/20/2017	Page 1	of 1
Township 36N	Range 25W	Section(s) and Subdivision(s) Sec 16 - NENW, NESW, NWNW, NWSE, NWSW, SENW, SESW, SWNW, SWSE, SWSW; Sec 17 - NENE, NESE, NESW, NWNE, NWSE, SENE, SENW, SESE, SWNE & SWSE	Scale 1:15,840		

Cover Type				Density	
A = Aspen	H = Hemlock	N = Marsh	U = Upland Brush	0 = Non Stocked	5 = Pole Timber Medium
B = Paper Birch	J = Jack Pine	O = Oak	UM = Upland Mixed	1 = Seedling Sapling Poor	6 = Pole Timber Well
C = Cedar	L = Lowland Brush	P = Lowland Poplar	V = Bog or Marsh	2 = Seedling Sapling Medium	7 = Saw Timber Poor
D = Tread Bog	LM = Lowland Mixed	Q = Mixed Swamp Conifer	W = White Pine	3 = Seedling Sapling Well	8 = Saw Timber Medium
E = Swamp Hdwoods	M = Mpl, Bch, Brch	R = Red Pine	X = Non Stocked	4 = Pole Timber Poor	9 = Saw Timber Well
F = Spruce Fir	MC = Mixed Conifer	S = Black Spruce	Z = Water		
G = Grass	MD = Mixed Deciduous	T = Tamarack			



Devil's Creek SBW
Compartment 42
329.6 Acres

PU	Acres	PU	Acres
1	32.6	8	6.6
2	24.1	9	22.0
3	30.9	10	21.1
4	39.2	11	29.1
5	39.7	12	36.5
6	23.8	13	11.4
7	12.6		



Legend

- Against State (Red)
- Payment Unit (Yellow)
- Section Corners
- 16** Section Number
- Paved Roads
- Gravel Roads
- Poor Dirt Roads
- Payment Unit
- Retention Patch
- Creek/Seasonal Drainage
- River
- Forest Island ORV Trail

