



### TIMBER SALE MAP

This information provided by authority of Part 325, 1994 PA 457, as amended

Forest Management Unit: Escanaba Management Unit  
 Township: 36N  
 Range: 25W  
 Section(s) and Subdivision(s): Sec 5 - NWNE, SESE, SWNE, Sec 8 - NENE, NESE, NWNE, NWSE, SESE, SWNE, Sec 9 - NWNW, SWSE, Sec 17 NWNE

County: Menominee County  
 Mapped By: Beaudou  
 Created By: Saller, Beaudou  
 Date: 9/28/2017  
 Scale: 1:15,840

Page 1 of 1  
 Sale Number: 33-045  
 Year: 17

- Cover Type**
- A = Aspen
  - B = Paper Birch
  - C = Cedar
  - D = Tread Bog
  - E = Swampy Hardwoods
  - F = Service Fir
  - G = Grass
  - H = Hemlock
  - J = Jack Pine
  - L = Lowland Birch
  - LM = Lowland Mixed
  - ML = Mixed Soft
  - MC = Mixed Conifer
  - R = Red Pine
  - S = Black Spruce
  - T = Tamarack
  - N = Marsh
  - O = Oak
  - P = Lowland Poplar
  - Q = Mixed Swamp Conifer
  - R = Red Pine
  - S = Black Spruce
  - T = Tamarack
  - U = Upland Birch
  - UM = Upland Mixed
  - V = Bog or Marsh
  - W = White Pine
  - X = Non Stocked
  - Z = Water

- Density**
- 0 = Non Stocked
  - 1 = Seeding Sapling Poor
  - 2 = Seeding Sapling Medium
  - 3 = Seeding Sapling Well
  - 4 = Pole Timber Poor
  - 5 = Pole Timber Medium
  - 6 = Pole Timber Well
  - 7 = Saw Timber Poor
  - 8 = Saw Timber Medium
  - 9 = Saw Timber Well

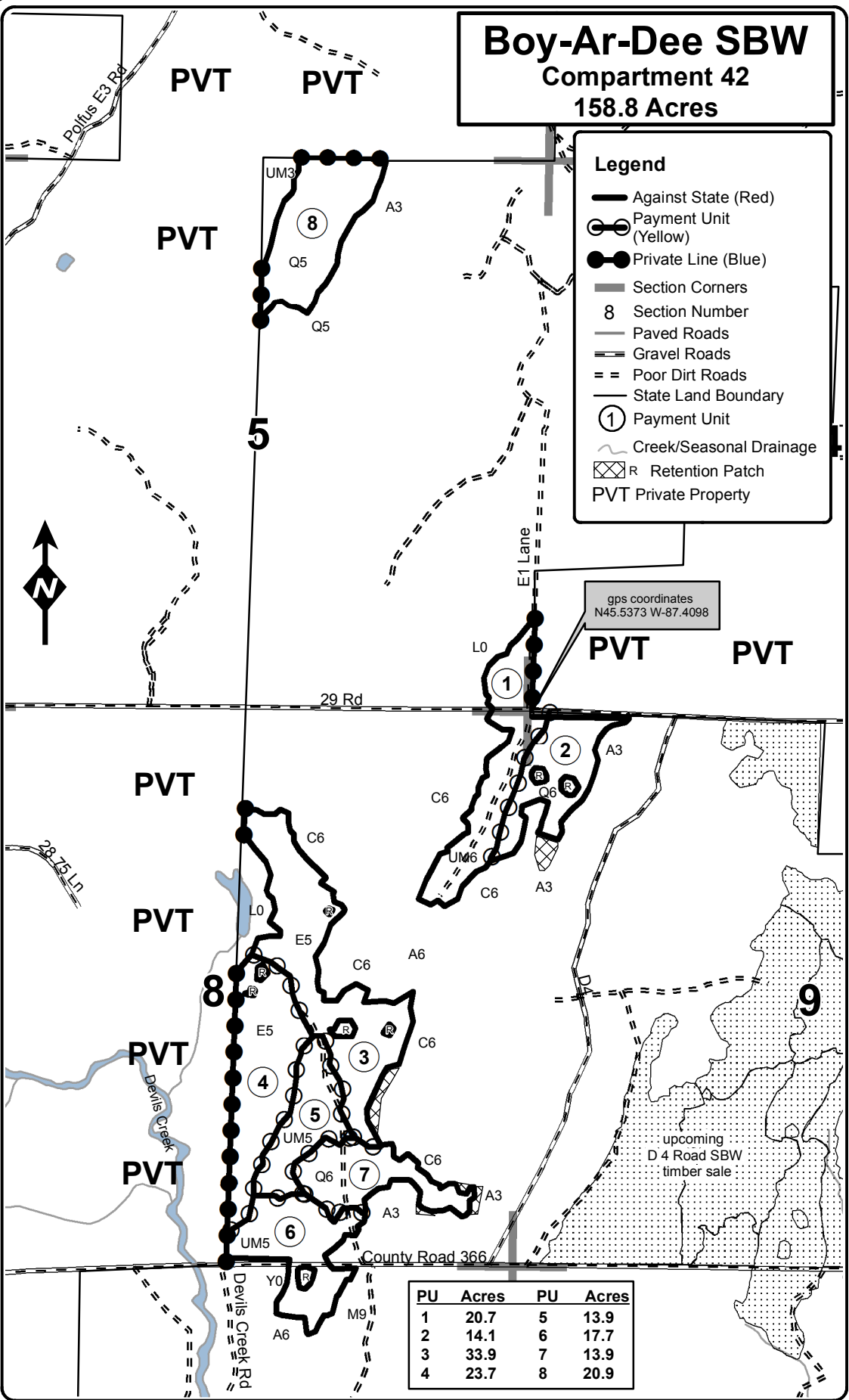
# Boy-Ar-Dee SBW

## Compartment 42

### 158.8 Acres

**Legend**

- Against State (Red)
- Payment Unit (Yellow)
- Private Line (Blue)
- Section Corners
- 8 Section Number
- Paved Roads
- == Gravel Roads
- == Poor Dirt Roads
- State Land Boundary
- ① Payment Unit
- ~ Creek/Seasonal Drainage
- ⊠ R Retention Patch
- PVT Private Property



gps coordinates  
 N45.5373 W-87.4098

PU	Acres	PU	Acres
1	20.7	5	13.9
2	14.1	6	17.7
3	33.9	7	13.9
4	23.7	8	20.9

