



# TIMBER SALE MAP

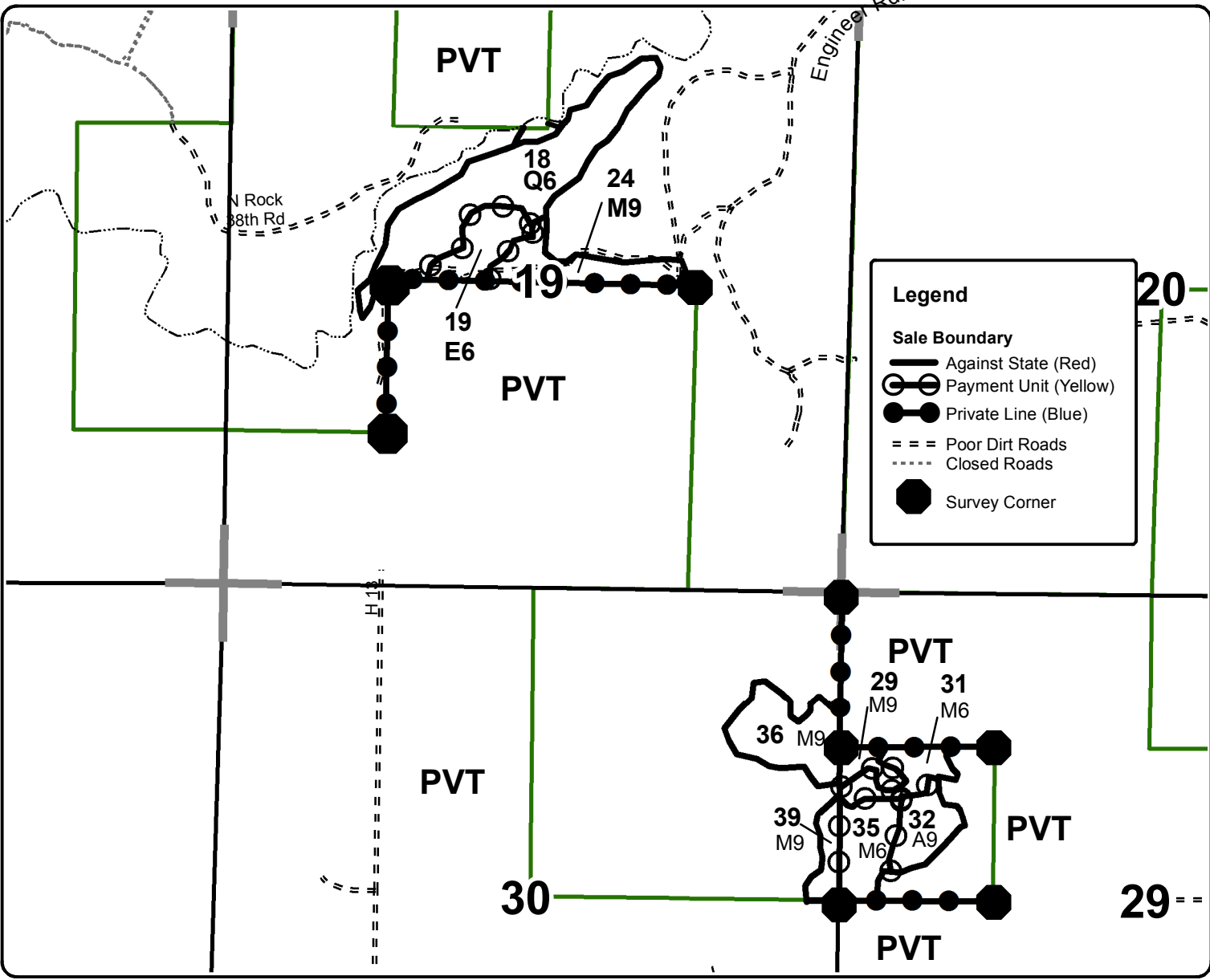
This information provided by authority of Part 525, 1994 PA 451, as amended.

Forest Management Unit <b>Escanaba</b>		County <b>Delta</b>	Mapped By <b>Racine</b>	Date <b>9/23/2015</b>	Page <b>1</b>	of <b>1</b>
Township <b>43N</b>	Range <b>22W</b>	Section(s) and Subdivision(s) <b>19) W1/2NE, SENW, NWSW 29) SWNW 30) SENE, NENE</b>			Scale <b>1:15,840</b>	
Cruised By <b>Contracors, Racine</b>						

Cover Type				Density			
A = Aspen	H = Hemlock	N = Marsh	U = Upland Brush	0 = Non Stocked	5 = Pole Timber Medium		
B = Paper Birch	J = Jack Pine	O = Oak	UM = Upland Mixed	1 = Seedling Sapling Poor	6 = Pole Timber Well		
C = Cedar	L = Lowland Brush	P = Lowland Poplar	V = Bog or Marsh	2 = Seedling Sapling Medium	7 = Saw Timber Poor		
D = Tread Bog	LM = Lowland Mixed	Q = Mixed Swamp Conifer	W = White Pine	3 = Seedling Sapling Well	8 = Saw Timber Medium		
E = Swamp Hdwoods	M = Mpl, Bch, Brch	R = Red Pine	X = Non Stocked	4 = Pole Timber Poor	9 = Saw Timber Well		
F = Spruce Fir	MC = Mixed Conifer	S = Black Spruce	Z = Water				
G = Grass	MD = Mixed Deciduous	T = Tamarack					

Stand Acres	Stand Acres	Stand Acres	Stand Acres	Stand Acres	Stand Acres
18	31	36	13	31	6
19	8	39	4	32	7
24	9	29	3	35	9

**East of Rapid**  
**Compartment 98, 99**  
**90 Acres**



**Legend**

- Sale Boundary**
  - Against State (Red)
- Payment Unit (Yellow)**
  -
- Private Line (Blue)**
  -
- Poor Dirt Roads**
  - - -
- Closed Roads**
  - ⋯
- Survey Corner**
  -

