



TIMBER SALE MAP

This information provided by authority of Part 525, 1994 PA 451, as amended.

Forest Management Unit Escanaba Management Unit	County Menominee County	Mapped By Collins	Date 09/27/2017	Page 1	of 1
Township 36N & 37N	Range 25W	Section(s) and Subdivision(s) 36N 25W sec 3 - NWNE, NENW, NWNW, SENW, SWNW, NWSW & SWSW sec 4 - NENE, NWNE, SWNE, NENW, NWNW & SWNW 37N 25W sec 33 - SESE, SWSE & SESW	Scale 1:15,840		

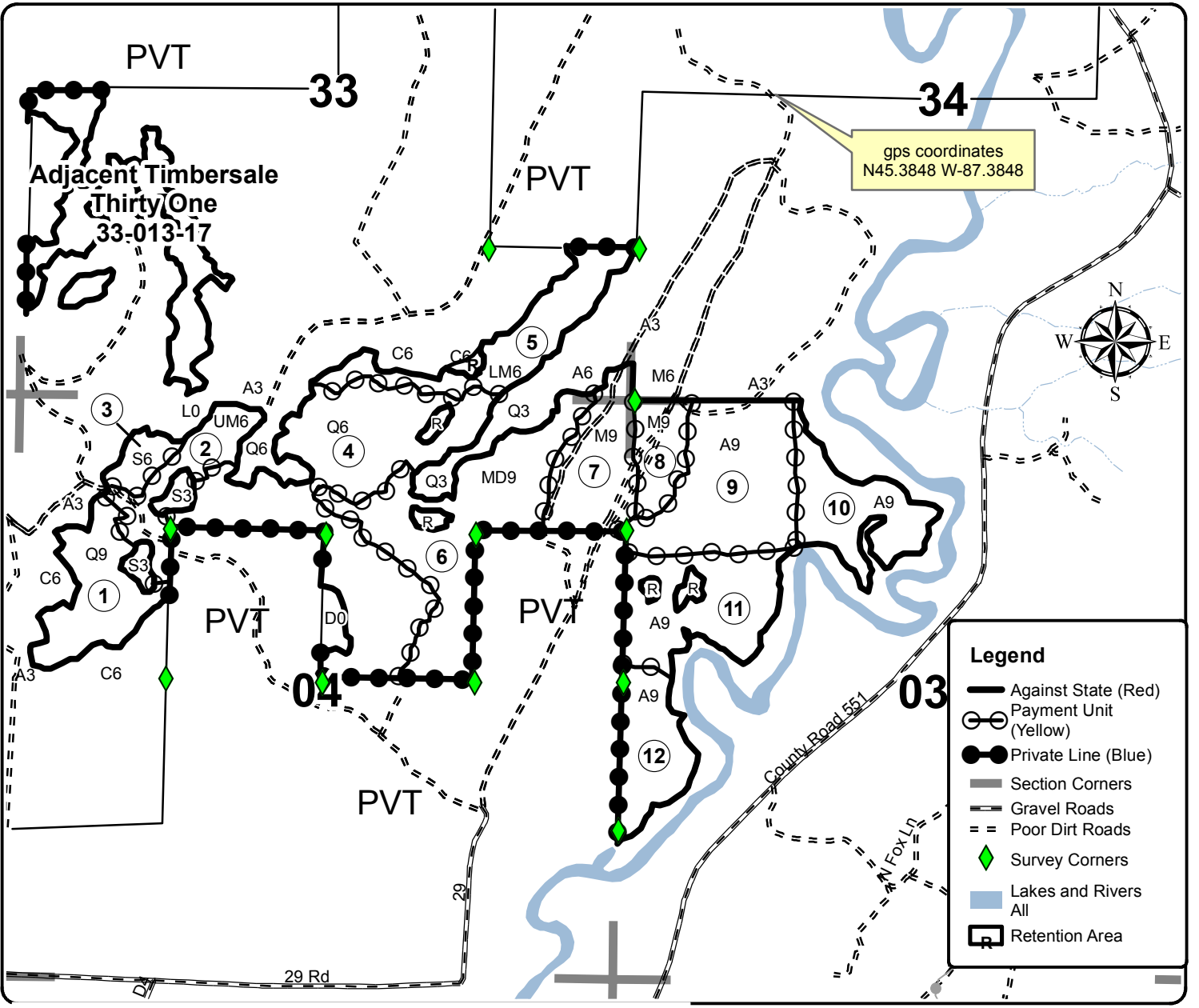
Cover Type				Density	
A = Aspen	H = Hemlock	N = Marsh	U = Upland Brush	0 = Non Stocked	5 = Pole Timber Medium
B = Paper Birch	J = Jack Pine	O = Oak	UM = Upland Mixed	1 = Seedling Sapling Poor	6 = Pole Timber Well
C = Cedar	L = Lowland Brush	P = Lowland Poplar	V = Bog or Marsh	2 = Seedling Sapling Medium	7 = Saw Timber Poor
D = Treed Bog	LM = Lowland Mixed	Q = Mixed Swamp Conifer	W = White Pine	3 = Seedling Sapling Well	8 = Saw Timber Medium
E = Swamp Hdwoods	M = Mpl, Bch, Brch	R = Red Pine	X = Non Stocked	4 = Pole Timber Poor	9 = Saw Timber Well
F = Spruce Fir	MC = Mixed Conifer	S = Black Spruce	Z = Water		
G = Grass	MD = Mixed Deciduous	T = Tamarack			

PU	Acres	PU	Acres	PU	Acres
1	17.9	5	18.7	9	32.9
2	12.6	6	40.4	10	18.8
3	4.3	7	17	11	24.3
4	57.5	8	9	12	15.1

Jumpy Frog

Compartment 36, 39 & 42

268.5 Acres



Legend

- Against State (Red)
- Payment Unit (Yellow)
- Private Line (Blue)
- Section Corners
- Gravel Roads
- Poor Dirt Roads
- ◆ Survey Corners
- Lakes and Rivers All
- R Retention Area